

UPS LOGISTICS CENTER

NEW CONSTRUCTION LOGISTICS CENTER NEAR SPOKANE AIRPORT
FOR SUBLEASE



TOK COMMERCIAL
REAL ESTATE

9210 W HARLAN LN | SPOKANE | WA, 99224

DREW ULRICK, SIOR

509.606.5055 / drew@tokcommercial.com

96,000 SF
AVAILABLE

UPS LOGISTICS CENTER

AVAILABLE	SIZE	LEASE RATE
UPS LOGISTICS CENTER	96,000 SF	\$0.85/SF, NNN

INDUSTRIAL
PROPERTY TYPE

83,000 SF
TRAILER PARKING

2021
YEAR BUILT

LIGHT INDUSTRIAL
ZONING

96,000 SF
BLDG SIZE

8/31/2033
LEASE EXPIRATION DATE

30'
CEILING HEIGHT

NNN
LEASE TYPE

6.72 ACRES
LOT SIZE

\$0.22/SF
EST NNN'S



HIGHLIGHTS

Near Spokane Airport and Fairchild AFB with one-day trucking access to Seattle

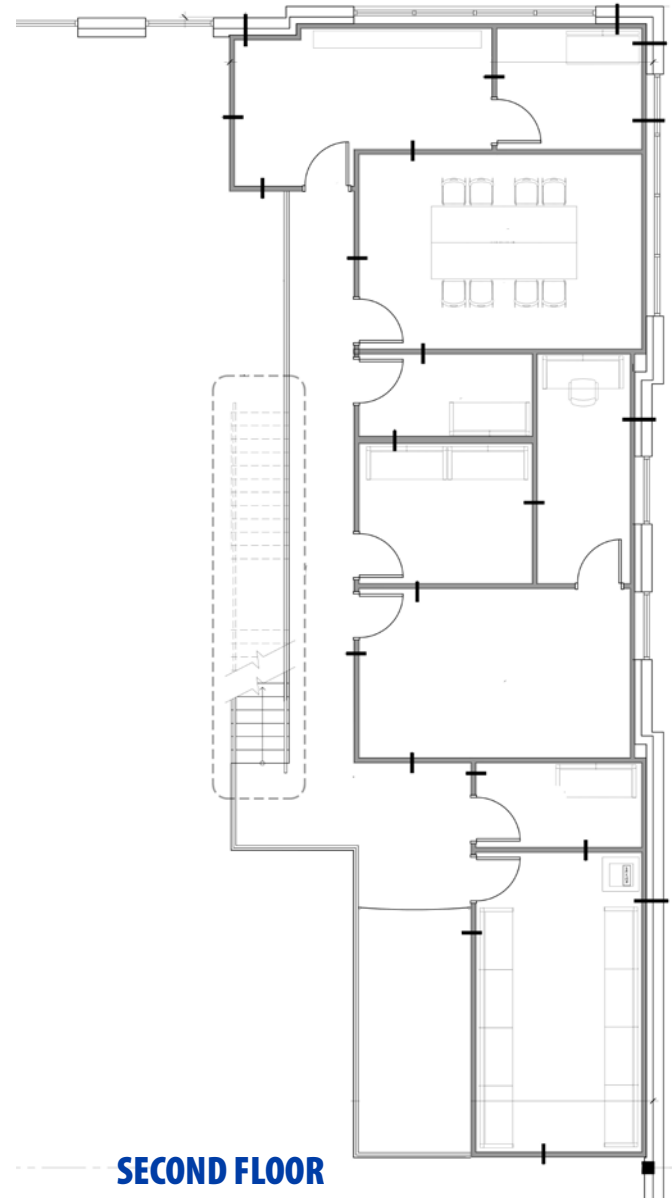
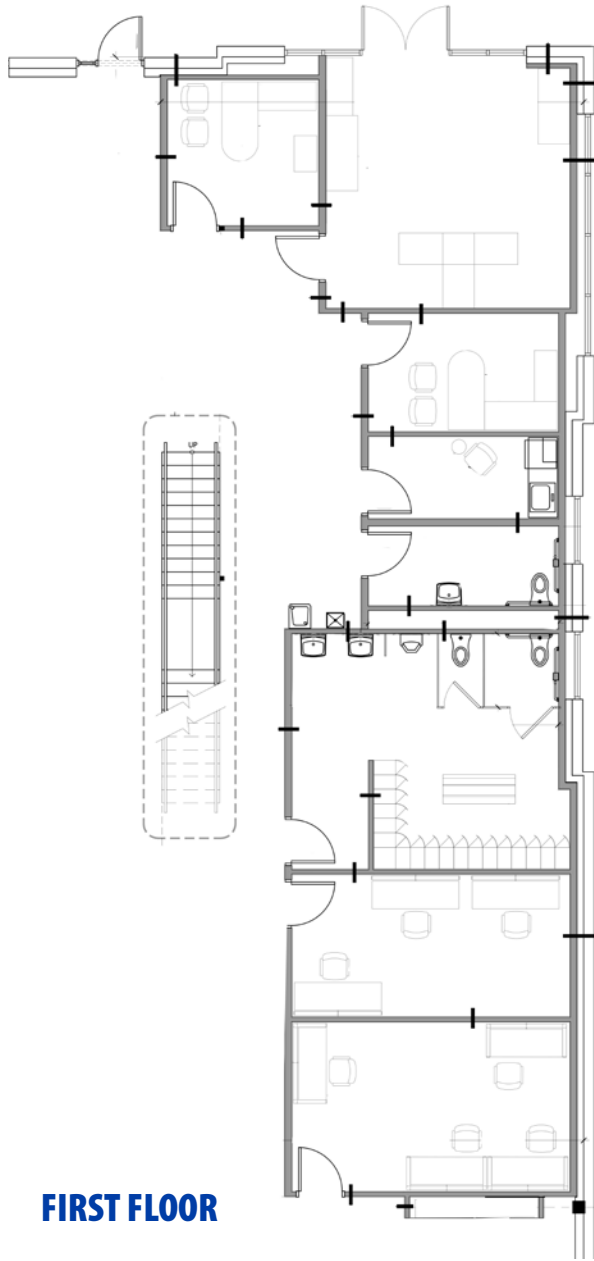
In the heart of West Plains Logistics Hub

Class A industrial distribution facility

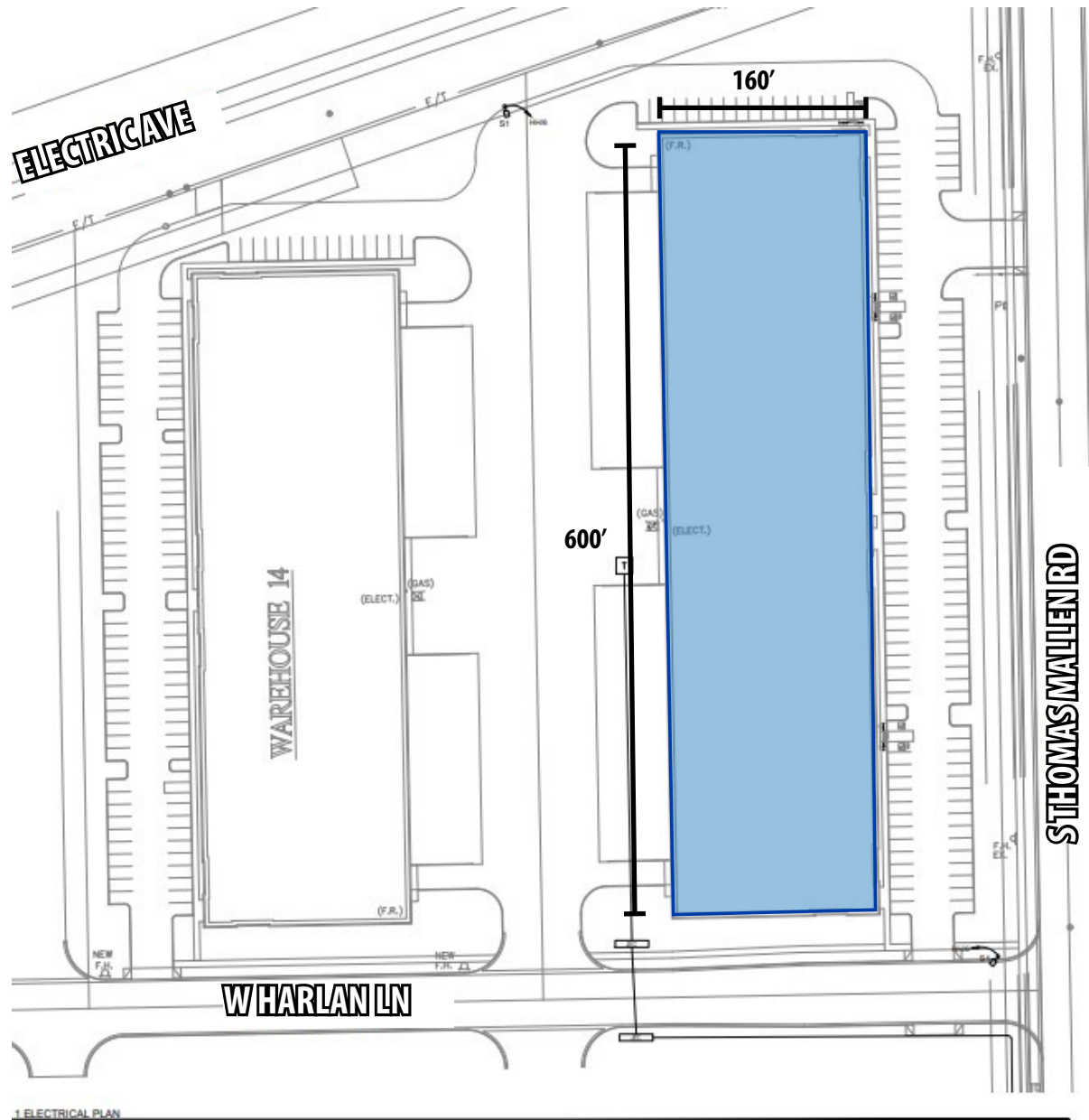
4,000 +/- SF of 1st generation office spaces



FLOOR PLAN



SITE PLAN





[5] **UPS LOGISTICS CENTER**

UPDATED: 5.21.2026

THIS PROPERTY IS EXCLUSIVELY MARKETED BY TOK BOISE LLC DBA TOK COMMERCIAL. THIS INFORMATION WAS OBTAINED FROM SOURCES BELIEVED RELIABLE BUT CANNOT BE GUARANTEED. ANY OPINIONS OR ESTIMATES ARE USED FOR EXAMPLE ONLY.

SPOKANE CITY CORE
VIA I-90
12 MINUTES / 7 MILES AWAY

DRIVE TO I-90
2.2 MILES / 4 MIN

SPOKANE INTERNATIONAL AIRPORT
CLICK FOR MORE INFORMATION



SPOKANE INTERNATIONAL AIRPORT

SITE

TRAILER PARKING

38,067 VPD



W Electric Ave

JOIN TOP THE TOP INDUSTRIAL NAMES



[7] **UPS LOGISTICS CENTER**

UPDATED: 5.21.2026

THIS PROPERTY IS EXCLUSIVELY MARKETED BY TOK BOISE LLC DBA TOK COMMERCIAL. THIS INFORMATION WAS OBTAINED FROM SOURCES BELIEVED RELIABLE BUT CANNOT BE GUARANTEED. ANY OPINIONS OR ESTIMATES ARE USED FOR EXAMPLE ONLY.

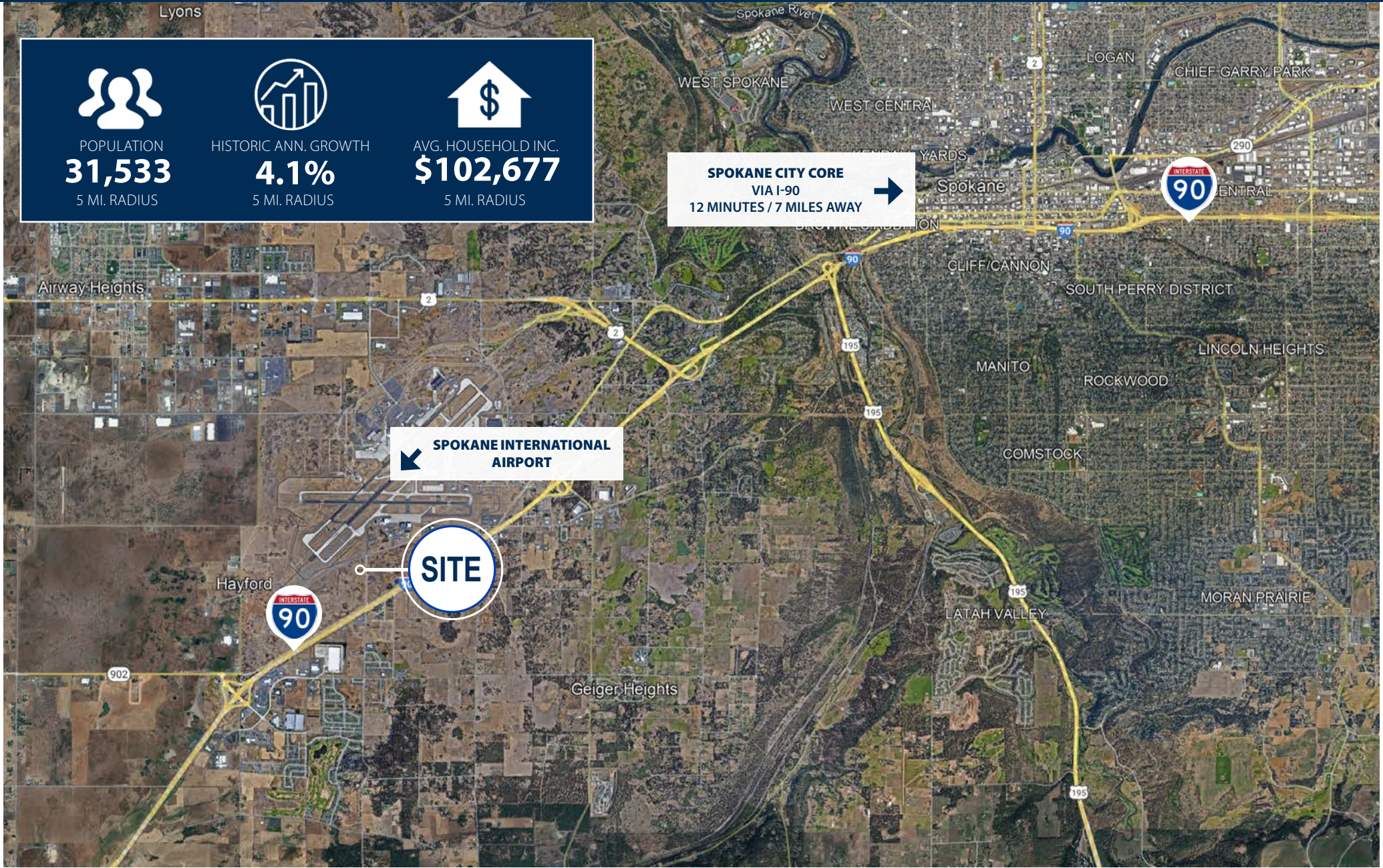
QUICK ACCESS TO MAJOR METRO AREA

 <p>POPULATION 31,533 5 MI. RADIUS</p>	 <p>HISTORIC ANN. GROWTH 4.1% 5 MI. RADIUS</p>	 <p>AVG. HOUSEHOLD INC. \$102,677 5 MI. RADIUS</p>
--	--	--

SPOKANE CITY CORE
VIA I-90
12 MINUTES / 7 MILES AWAY →

← **SPOKANE INTERNATIONAL AIRPORT**

SITE



UPS LOGISTICS CENTER

NEW CONSTRUCTION LOGISTICS CENTER NEAR SPOKANE AIRPORT
FOR SUBLEASE

9210 W HARLAN LN | SPOKANE | WA, 99224

DREW ULRICK, SIOR, PARTNER
509.606.5055 / drew@tokcommercial.com

TOK COMMERCIAL
REAL ESTATE

