



FOR LEASE

3,037 ± SF–
4,887± SF

Professional Office
in Kanab, UT



468 E 300 S
Kanab, UT 84741

Property Features

- Class A office available in Kanab, Utah
- Tenants include Drivers License Division and Division of Workforce Services
- 3,037± SF up to 4,887± SF available
- Tenant improvements to be negotiated

AVAILABLE SQFT

3,037± SF – 4,887± SF

For more information:

Brandon Vandermyde

phone: 435.627.5707
email: brandonv@naiexcel.com

Kim England

phone: 435.644.2609
email: kim.erautah@gmail.com

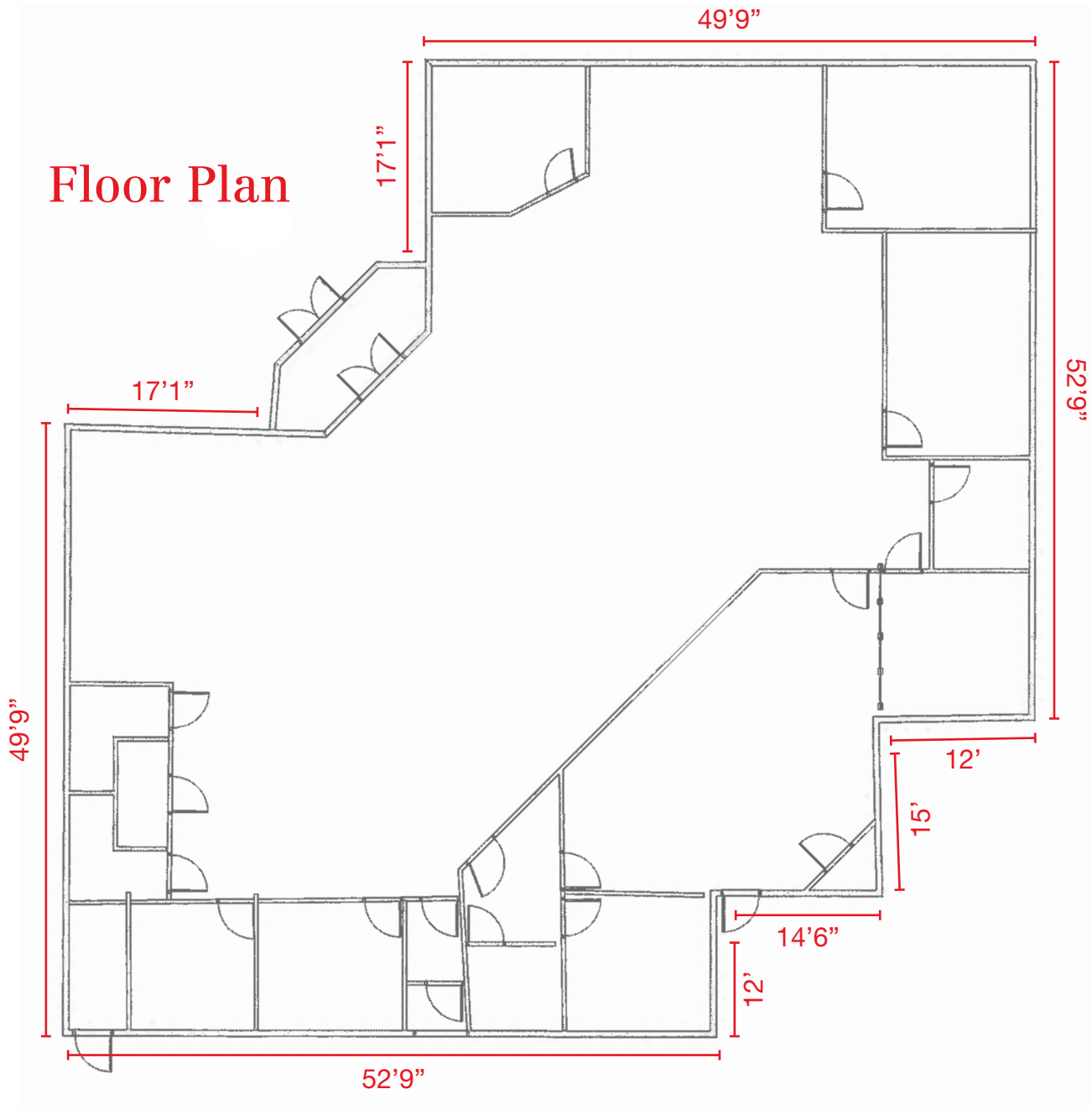
LEASE PRICE – Price Negotiable

NO WARRANTY OR REPRESENTATION, EXPRESS OR IMPLIED, IS MADE AS TO THE ACCURACY OF THE INFORMATION CONTAINED HEREIN, AND THE SAME IS SUBMITTED SUBJECT TO ERRORS, OMISSIONS, CHANGE OF PRICE, RENTAL OR OTHER CONDITIONS, PRIOR SALE, LEASE OR FINANCING, OR WITHDRAWAL WITHOUT NOTICE, AND OF ANY SPECIAL LISTING CONDITIONS IMPOSED BY OUR PRINCIPALS NO WARRANTIES OR REPRESENTATIONS ARE MADE AS TO THE CONDITION OF THE PROPERTY OR ANY HAZARDS CONTAINED THEREIN ARE ANY TO BE IMPLIED. THE INFORMATION PORTRAYED ON THE MAP, WHILE NOT GUARANTEED, HAS BEEN SECURED FROM SOURCES DEEMED RELIABLE. CONSULT A SURVEYOR FOR PRECISE BOUNDARIES.

AREA MAP
Professional Office in
Kanab, UT



FOR LEASE
Professional Office in
Kanab, UT



PROPERTY PHOTOS
Professional Office in
Kanab, UT



PROPERTY PHOTOS
Professional Office in
Kanab, UT



PROPERTY PHOTOS
Professional Office in
Kanab, UT



FOR LEASE
Professional Office in
Kanab, UT



Driving Distance to Major Cities from Property

SALT LAKE CITY, UT	312 miles
LAS VEGAS, NV	203 miles
DENVER, CO	610 miles
LOS ANGELES, CA	467 miles
SAN FRANCISCO, CA	766 miles
SEATTLE, WA	1,142 miles

Location Information

KANE COUNTY was named after Brigadier General Thomas L. Kane. The first inhabitants of Kane County were the Anasazi - also called Moqui (Mo-kee) Indians. Jacob Hamblin built Fort Kanab in 1869. Kanab elected the first all-woman town council in 1912.

Kanab means 'place of the willows' in Paiute. Kane County is well known for its slot canyons and ancient Indian rock art. Famed western author Zane Grey wrote his first novels in Kanab. Major John Wesley Powell mapped the Grand Canyon from Kanab. Kanab is known as 'Little Hollywood' due to the extensive use of the area for location filming; over 100 major movies have been filmed in Kane County.

- POPULATION: Kane County - 7,221
Kanab - 4,492
- LAND AREA: 3,992 Square Miles
- ECONOMY: Median Income of \$41,280 with
a Cost of Living Index of 83.0
- HOUSING: Median house value of \$195,546

For more information:

Brandon Vandermyde

phone: 435.627.5707
email: brandonv@naiexcel.com

Kim England

phone: 435.644.2609
email: kim.erautah@gmail.com

[CLICK HERE FOR MORE INFORMATION](#)