

# For Sublease

**Joe Riley**

Senior Vice President  
+1 206 223 1424  
joe.riley@colliers.com

**Tony Ford**

Executive Vice President  
+1 206 223 1443  
tony.ford@colliers.com

Standard Building  
1012 1st Avenue, Suite 600  
Seattle, WA

601 Union Street, Suite 5300  
Seattle, WA 98101  
P: +1 206 223 0866  
F: +1 206 223 1427

Copyright © 2021 Colliers International. Information herein has been obtained from sources deemed reliable, however its accuracy cannot be guaranteed. The user is required to conduct their own due diligence and verification.



## Property Overview

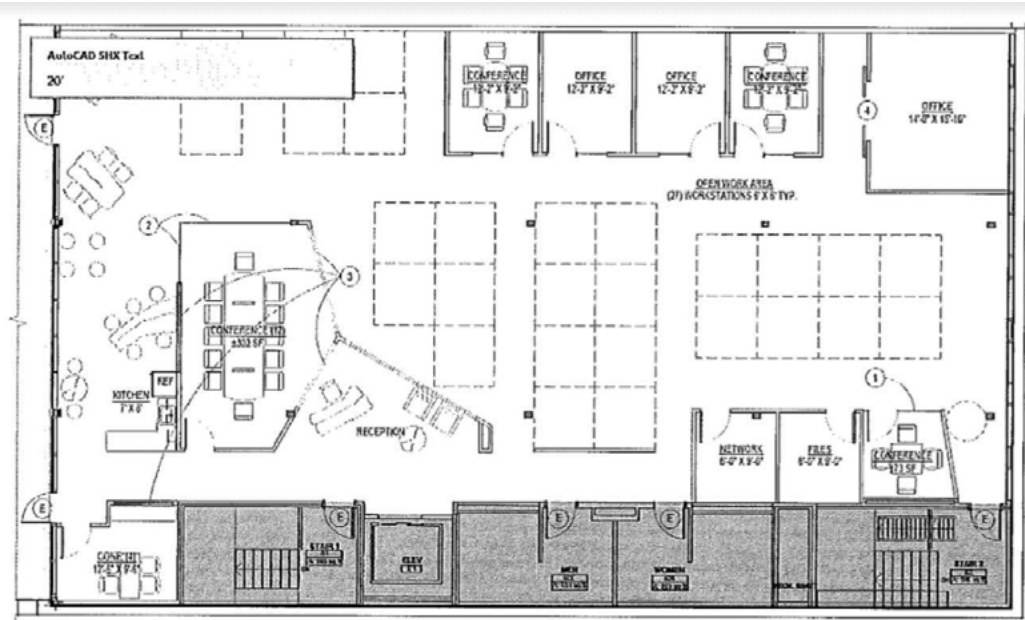
- Full floor penthouse with private deck
- Creative plug & play space
- 5,183 RSF
- Sublease term through November 30, 2023
- Rental rate: Mid \$40's, full service
- Available immediately



For Sublease



Penthouse



# For Sublease

## BUILDING FEATURES

- Located in the heart of Downtown Central Business District, short walk to Pike Place Market
- Two blocks from the Seattle waterfront
- All structural, mechanical, electrical, life safety, and plumbing systems modernized
- Beautifully renovated



### Joe Riley

Senior Vice President  
+1 206 223 1424  
[joe.riley@colliers.com](mailto:joe.riley@colliers.com)

### Tony Ford

Executive Vice President  
+1 206 223 1443  
[tony.ford@colliers.com](mailto:tony.ford@colliers.com)

---

601 Union Street, Suite 5300  
Seattle, WA 98101  
P: +1 206 223 0866  
F: +1 206 223 1427