



1" = 250'

Plat and Field Notes from a survey of a 23.628 acre (Tract A) tract of land and a 9.352 acre (Tract B) tract of land out of the J.A. Rutherford Survey, Abstract No. 777, in Lamar County, Texas.

To:

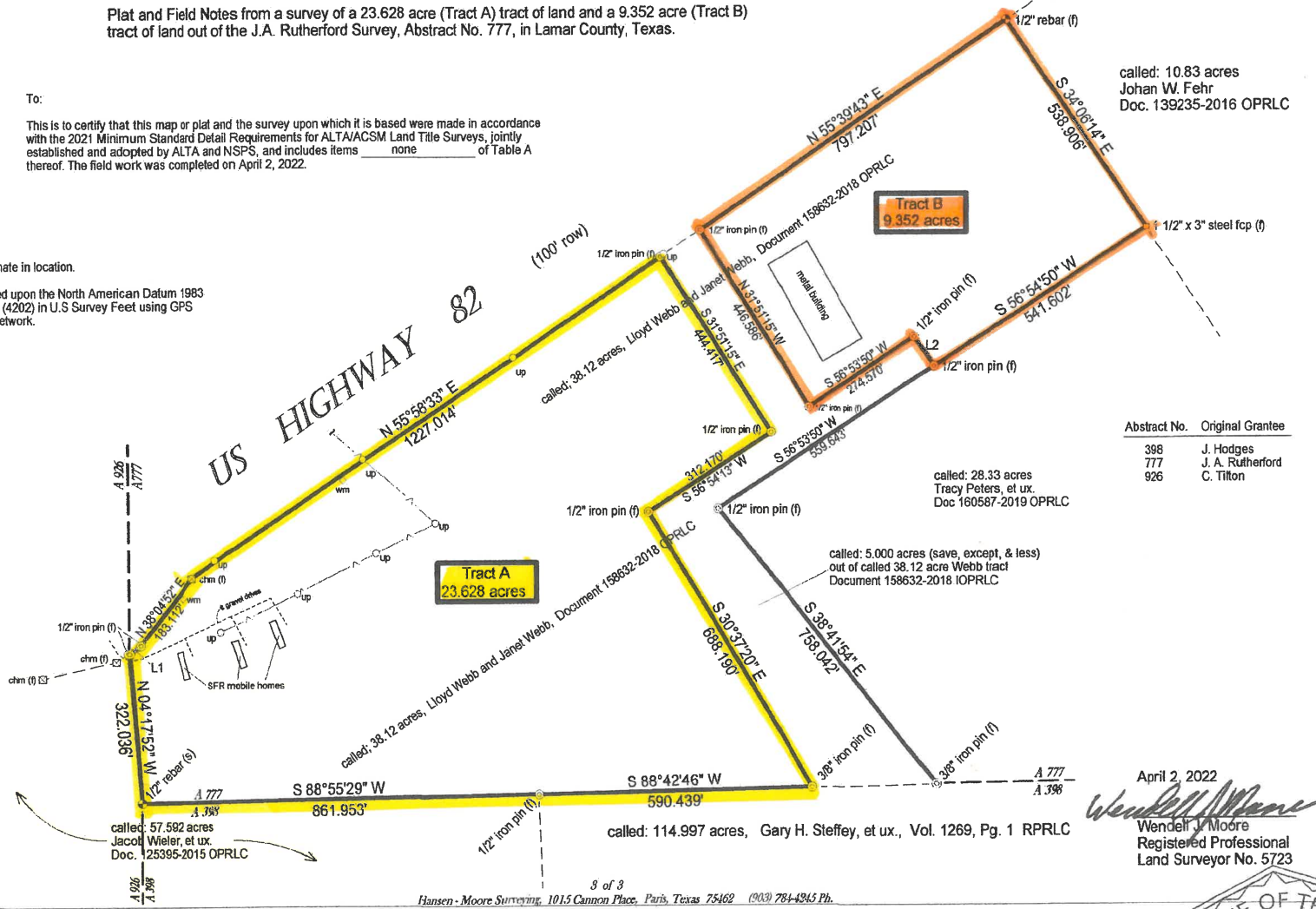
This is to certify that this map or plat and the survey upon which it is based were made in accordance with the 2021 Minimum Standard Detail Requirements for ALTA/ACSM Land Title Surveys, jointly established and adopted by ALTA and NSPS, and includes items none of Table A thereof. The field work was completed on April 2, 2022.

called: 10.83 acres
Johan W. Fehr
Doc. 139235-2016 OPRLC

Abstract Lines shown are approximate in location.

Bearings and coordinates are based upon the North American Datum 1983 in the Texas North Central Zone (4202) in U.S Survey Feet using GPS observations within the CORS network.

Line	Bearing	Distance
L1	N 52°01'03" E	28.881'
L2	N 33°06'02" W	75.000'



Abstract No.	Original Grantee
398	J. Hodges
777	J. A. Rutherford
926	C. Tilton

called: 28.33 acres
Tracy Peters, et ux.
Doc 160587-2019 OPRLC

called: 5.000 acres (save, except, & less)
out of called 38.12 acre Webb tract
Document 158632-2018 IOPRLC

called: 57.582 acres
Jacobi Wieler, et ux.
Doc. 125395-2015 OPRLC

called: 114.997 acres, Gary H. Steffey, et ux., Vol. 1269, Pg. 1 RPRLC

April 2, 2022

Wendell J. Moore
Wendell J. Moore
Registered Professional
Land Surveyor No. 5723

