

SHERWIN-WILLIAMS PLAZA

17438 E. COLONIAL DRIVE
ORLANDO, FL 32820



8,000 SF



RETAIL FOR LEASE

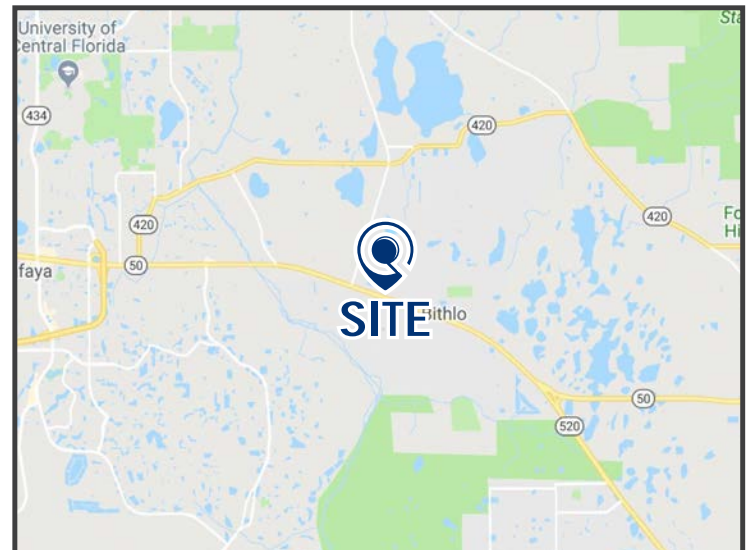


CALL FOR RATES

PROPERTY INFORMATION

Lease Rate:	Call for Rates
Size Available:	8,000 SF
Total GLA:	13,000 SF
E. Colonial Drive AADT:	25,345 CPD

- Co-anchor space available adjoining national retailer Sherwin-Williams.
- Great visibility on major thoroughfare Colonial Drive (US Highway 50).
- Monument signage available.
- Less than five-miles to State Road 408.
- High average household income of \$87,624 within three-miles.



DEMOGRAPHICS

	<u>1-MILE</u>	<u>3-MILES</u>	<u>5-MILES</u>
Total Population	3,436	34,963	101,062
Five-Year Increase	0.6%	0.8%	0.6%
Avg Household Income	\$75,987	\$93,125	\$90,630
Total Households	1,211	12,144	34,318
Daytime Employees	1,320	5,607	18,448

(Applied Geographic Solutions 2021)

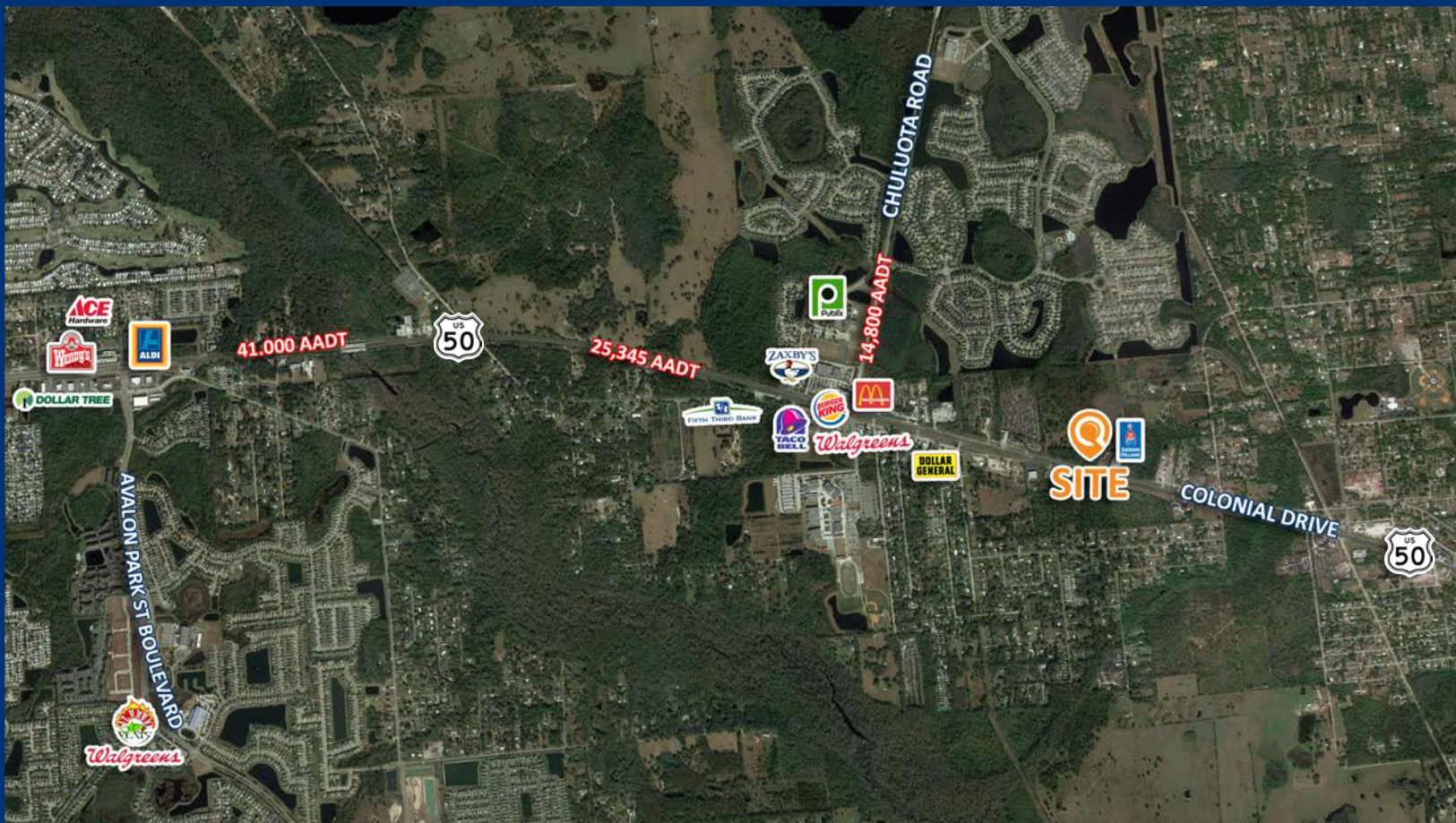
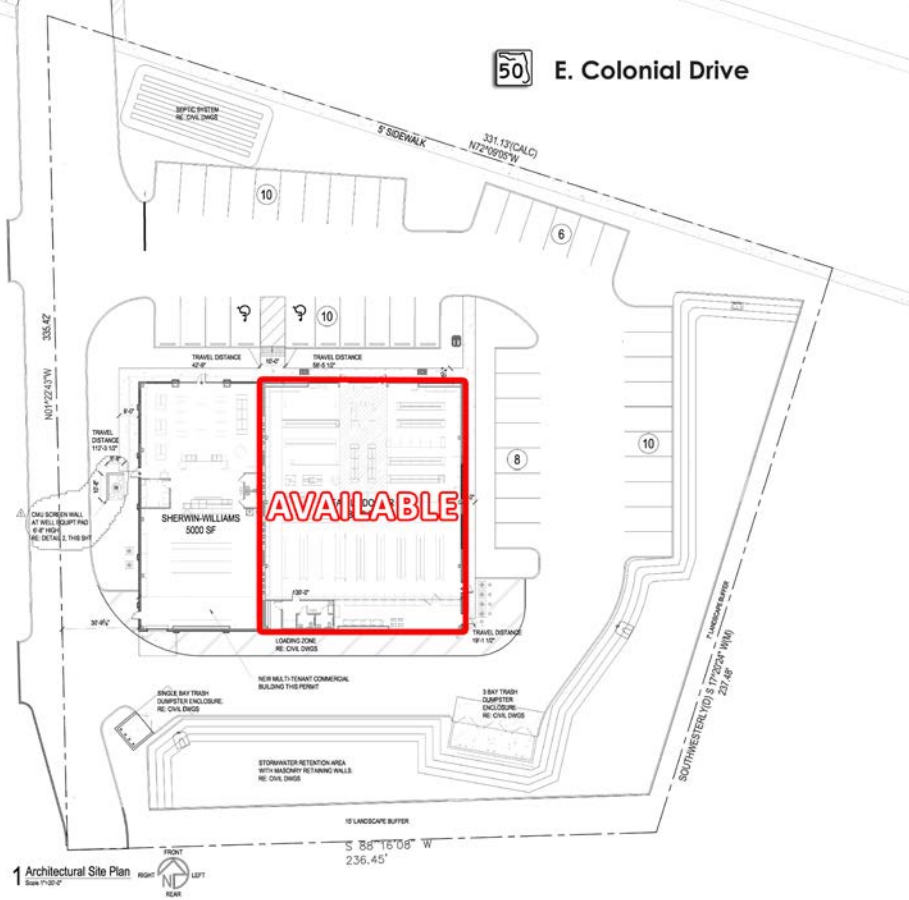
[LQWEST.COM/SHERWIN-WILLIAMS-LEASE](https://www.lqwest.com/SHERWIN-WILLIAMS-LEASE)

JULIA SOSA, PRINCIPAL
D: 407.775.4358 @ M: 407.257.8246
jsosa@lqwest.com @ [My LISTINGS](#)

EVA GRACE ROYAL, SENIOR ASSOCIATE
D: 407.705.2217 @ M: 407.421.3532
eroyal@lqwest.com @ [My LISTINGS](#)

LANDQWEST COMMERCIAL REAL ESTATE SERVICES @ 500 WINDERLEY PLACE SUITE 104, MAITLAND, FL 32751





500 Winderley Place, Suite 104, Maitland, FL 32751
 Main: 407.660.7500 © Fax: 407.660.7600 © LQWEST.COM

Information obtained from owner(s) or other sources deemed reliable. We have no reason to doubt its accuracy, but cannot guarantee it. All properties subject to change or withdrawal without notice.