

City Centre Offices TO LET

Part 6th Floor
3,000 sqft

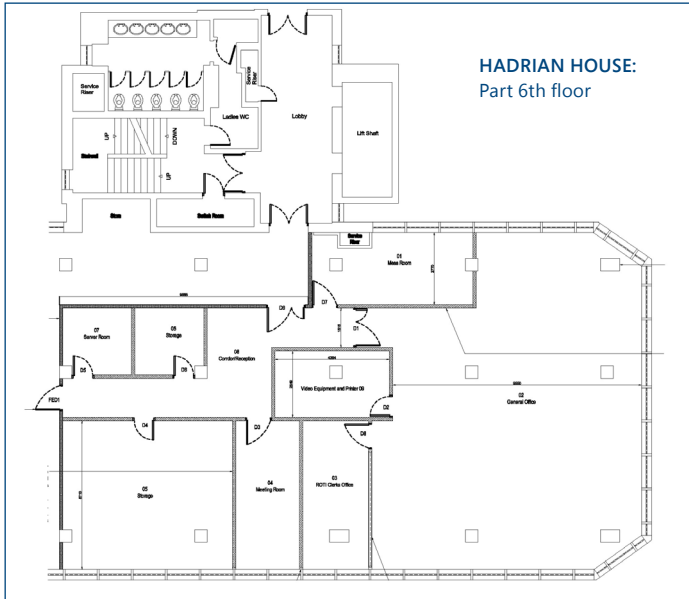


**Hadrian House,
Newcastle
NE1 8AF**



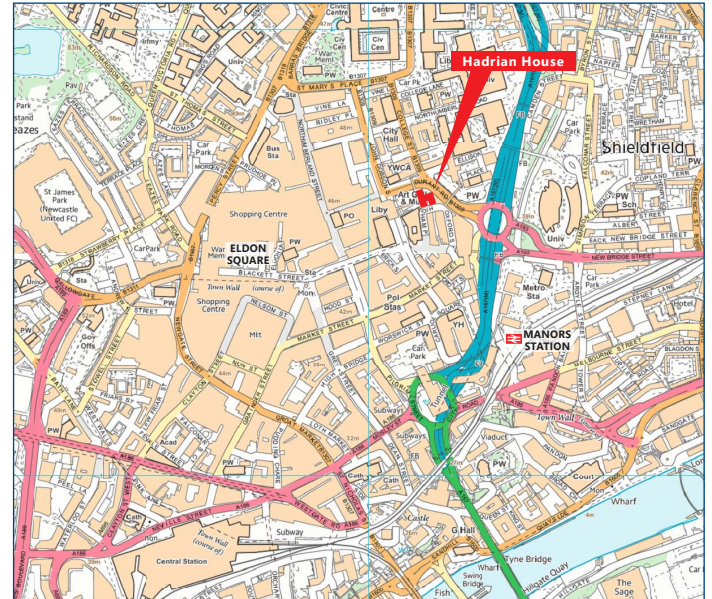
DESCRIPTION

Hadrian House comprises a mixed-use building constructed in the early 1970s with a rendered facade and large glazed windows. Internally the property has been redeveloped to provide retail space on the ground floor and office accommodation on the seven upper floors above. The premises are on the 6th floor offering great views across the city and the building was renovated in 2009.



THE LOCATION

The property is located just a few minutes' walk from the commercial heart of Newcastle City Centre and the retail and leisure facilities of Eldon Square and Northumberland Street. The pedestrianised New Bridge Street provides the walkway to the building. The A167(M) and A193 are both within close proximity. Manors Railway Station is close by.



TERMS

The part 6th floor is available on a new sub-lease for a term up to February 2022 with the following annual occupational costs:

Rent	£42,000
Service Charge	£15,000
Rates Payable 17/18	£19,600



VIEWING

For further information or to view please contact either:

Simon Knight

020 7312 7419

simon.knight@montagu-evans.co.uk

Luca Nardini

020 7312 7447

luca.nardini@montagu-evans.co.uk