

# 73 East Jefferson Street Office Building For Sale or For Lease Jefferson, Ohio 44047 (Ashtabula County)



73 East Jefferson St., Jefferson, Ohio 44047

## Property Info:

- 4,000± Total Sq. Ft. plus Basement
- .53 ± Acres
- 2 Story Office Building
- Located in Downtown Jefferson, Ashtabula County Seat
- Less than 2 Blocks From County Courthouse
- Easy Access to SR 45, SR 46, SR 307 and minutes from I-90
- Available for Lease or For Sale

**Sale Price: \$170,000**



Global Real Estate  
Advisors, Inc.

440.255.5552 x. 221  
Neil Sawicki, SIOR, Broker

440.339.8585

Neil@GlobalCommercialRE.com



# GLOBAL

[www.GlobalCommercialRE.com](http://www.GlobalCommercialRE.com)

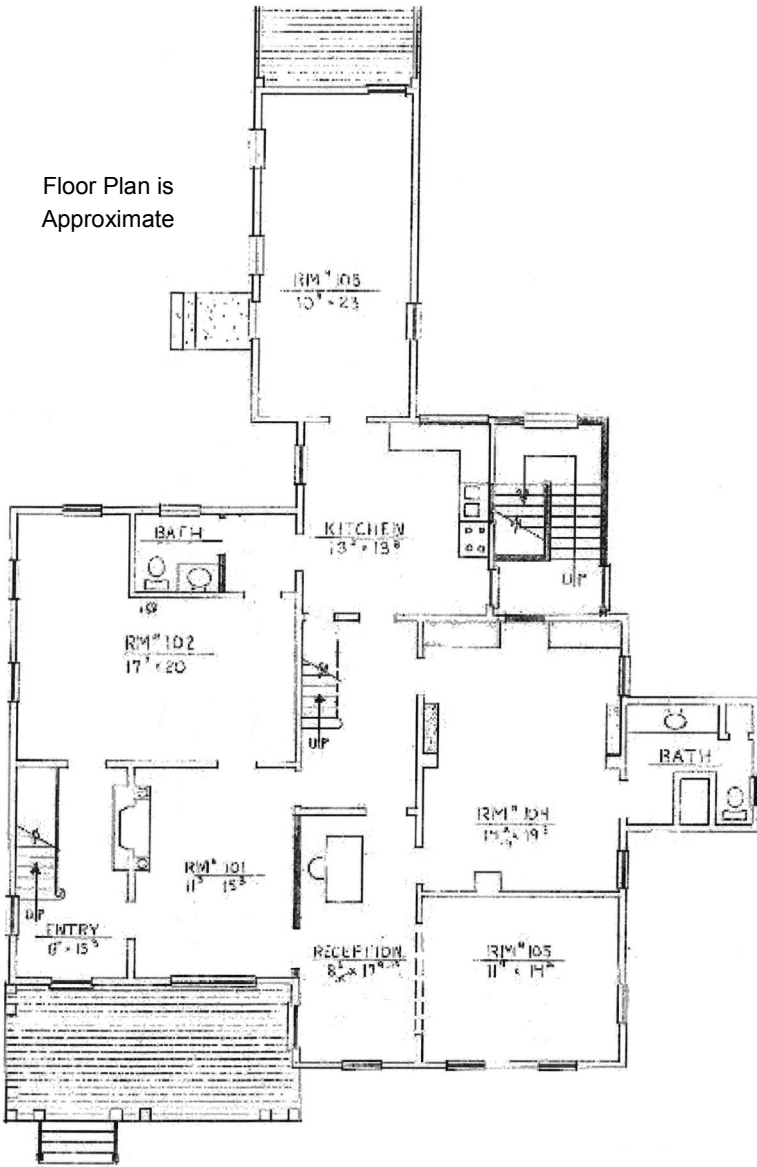
8585 East Ave. Mentor, Ohio 44060

**Real Estate Advisors Inc.**  
BROKER

This information has been secured from sources we believe are reliable, but we make no representations or warranties, expressed or implied, as to the accuracy of the information. References to condition, square footage or age are approximate. Buyer or Tenant acknowledges that they are relying on their own investigations and are not relying on Broker provided information. Procuring broker shall only be entitled to a commission, calculated in accordance with the rates approved by our principal only if such procuring broker executes a brokerage agreement acceptable to us and our principal and the conditions as set forth in the brokerage agreement are fully and unconditionally satisfied. Although all information furnished regarding property for sale, rental, or financing is from sources deemed reliable, such information has not been verified and no express representation is made nor is any to be implied as to the accuracy thereof and it is submitted subject to errors, omissions, change of price, rental or other conditions, prior sale, lease or financing, or withdrawal without notice and to any special conditions imposed by our principal.

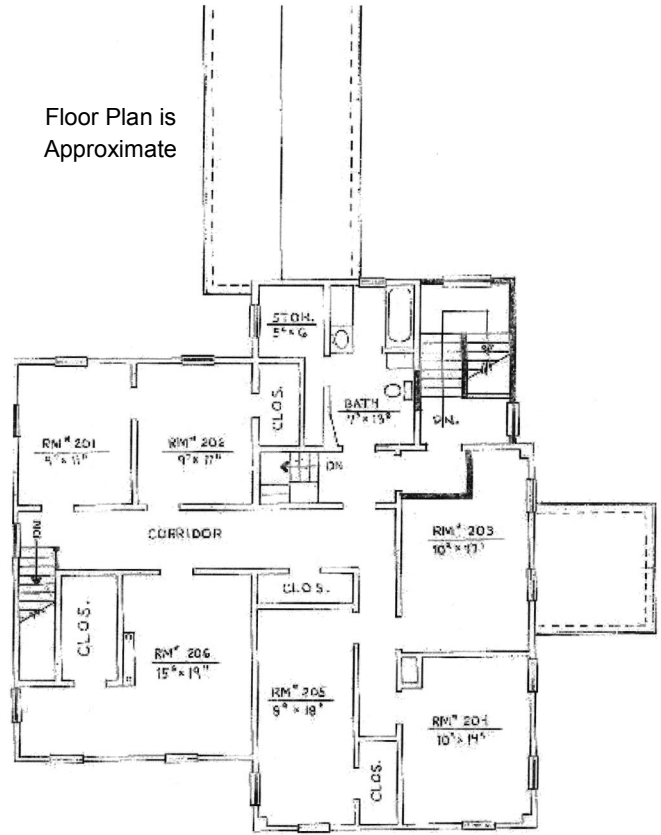
73 East Jefferson Street  
 Office Building For Sale or For Lease  
 Jefferson, Ohio 44047 (Ashtabula County)

Floor Plan is  
 Approximate



EXISTING FIRST FLOOR PLAN

Floor Plan is  
 Approximate



EXISTING SECOND FLOOR PLAN



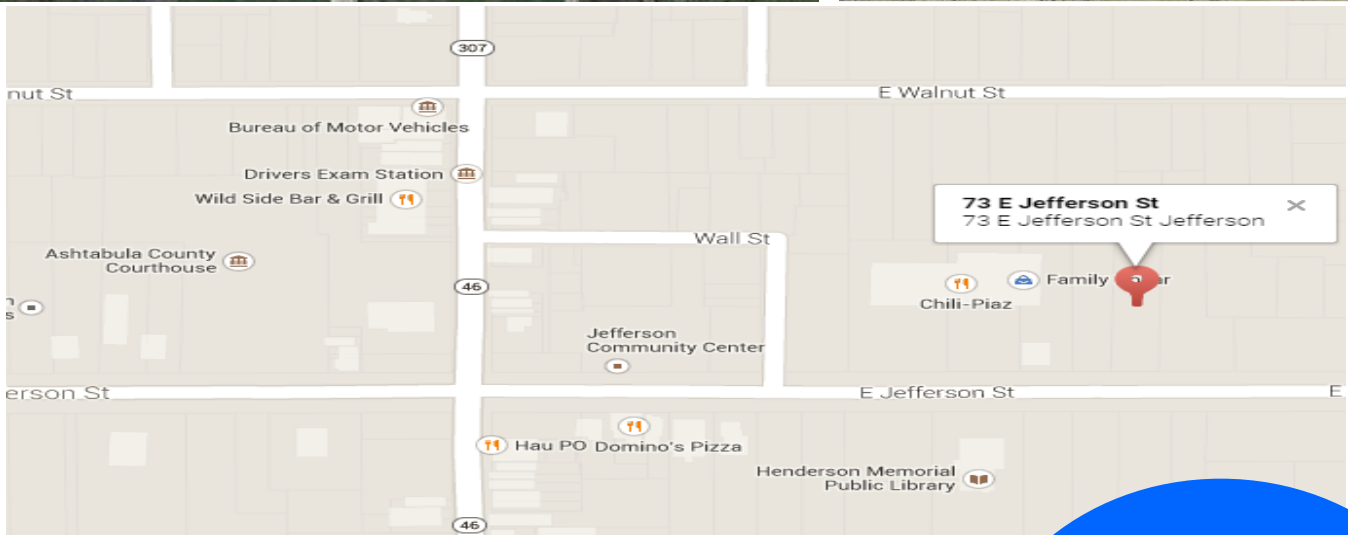
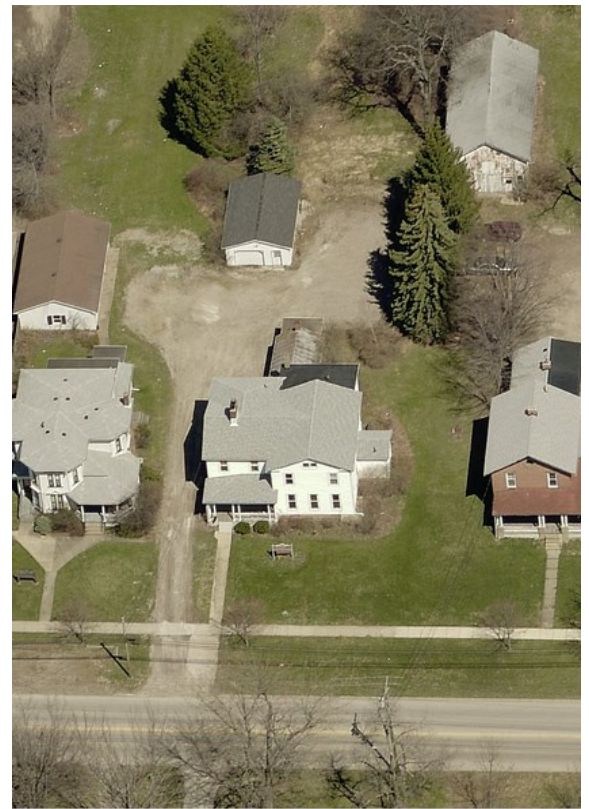
[www.GlobalCommercialRE.com](http://www.GlobalCommercialRE.com)  
 8585 East Ave. Mentor, Ohio 44060

**Real Estate Advisors Inc.**  
 BROKER

Global Real Estate  
 Advisors, Inc.  
 440.255.5552 x. 221  
 Neil Sawicki, SIOR, Broker  
 440.339.8585  
[Neil@GlobalCommercialRE.com](mailto:Neil@GlobalCommercialRE.com)

This information has been secured from sources we believe are reliable, but we make no representations or warranties, expressed or implied, as to the accuracy of the information. References to condition, square footage or age are approximate. Buyer or Tenant acknowledges that they are relying on their own investigations and are not relying on Broker provided information. Procuring broker shall only be entitled to a commission, calculated in accordance with the rates approved by our principal only if such procuring broker executes a brokerage agreement acceptable to us and our principal and the conditions as set forth in the brokerage agreement are fully and unconditionally satisfied. Although all information furnished regarding property for sale, rental, or financing is from sources deemed reliable, such information has not been verified and no express representation is made nor is any to be implied as to the accuracy thereof and it is submitted subject to errors, omissions, change of price, rental or other conditions, prior sale, lease or financing, or withdrawal without notice and to any special conditions imposed by our principal.

73 East Jefferson Street  
 Office Building For Sale or For Lease  
 Jefferson, Ohio 44047 (Ashtabula County)



[www.GlobalCommercialRE.com](http://www.GlobalCommercialRE.com)  
 8585 East Ave. Mentor, Ohio 44060

**Real Estate Advisors Inc.**  
 BROKER

Global Real Estate  
 Advisors, Inc.  
 440.255.5552 x. 221  
 Neil Sawicki, SIOR, Broker  
 440.339.8585  
[Neil@GlobalCommercialRE.com](mailto:Neil@GlobalCommercialRE.com)

This information has been secured from sources we believe are reliable, but we make no representations or warranties, expressed or implied, as to the accuracy of the information. References to condition, square footage or age are approximate. Buyer or Tenant acknowledges that they are relying on their own investigations and are not relying on Broker provided information. Procuring broker shall only be entitled to a commission, calculated in accordance with the rates approved by our principal only if such procuring broker executes a brokerage agreement acceptable to us and our principal and the conditions as set forth in the brokerage agreement are fully and unconditionally satisfied. Although all information furnished regarding property for sale, rental, or financing is from sources deemed reliable, such information has not been verified and no express representation is made nor is any to be implied as to the accuracy thereof and it is submitted subject to errors, omissions, change of price, rental or other conditions, prior sale, lease or financing, or withdrawal without notice and to any special conditions imposed by our principal.