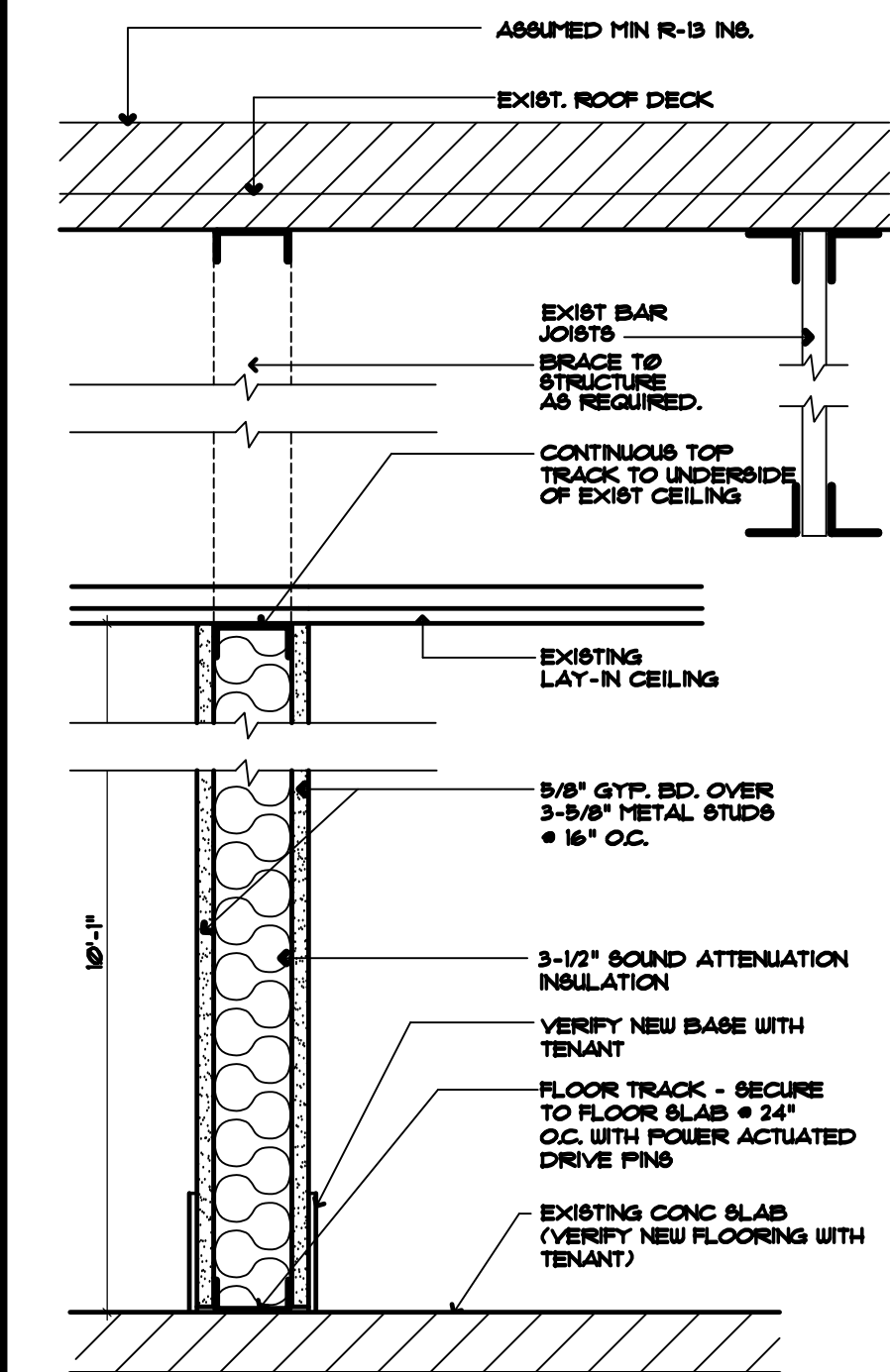


**LEGEND:**

— EXISTING WALL TO REMAIN

▨ NEW WALL - SEE SECTION 1-A-1

▬ EXISTING 1 HR. RATED WALL.



**1 TYP. WALL SECTION**  
 A-1 SCALE: 1/2" = 1'-0"

- GENERAL NOTES AND CONDITIONS:**
- CONTRACTOR ALSO REFERS TO ALL SUBCONTRACTORS WHERE APPLICABLE. PROVIDE ALL LABOR, EQUIPMENT, AND MATERIALS, INCLUDING INCIDENTAL ITEMS REQUIRED TO COMPLETE THE PROJECT.
  - ALL WORK TO COMPLY IN ALL RESPECTS WITH APPLICABLE CODES LISTED AND ANY OTHER STATUTES, ORDINANCES, REGULATIONS, LAWS AND CODES ADOPTED BY ANY AGENCY HAVING JURISDICTION OVER THE PROJECT.
  - CONTRACTOR MUST BE LICENSED IN THE STATE OF FLORIDA AND SHALL OBTAIN AN OCCUPATIONAL LICENSE AS REQUIRED BY LOCAL AGENCIES.
  - THE CONTRACTOR SHALL DO ALL CUTTING AND PATCHING REQUIRED TO MAKE THE PROPOSED WORK AND ITS SEVERAL PARTS COME TOGETHER PROPERLY. NO CUTTING SHALL BE DONE TO ANY STRUCTURAL MEMBERS EXCEPT WHERE SHOWN ON THESE DRAWINGS.
  - CONTRACTOR SHALL CONTACT ARCHITECT IMMEDIATELY UPON DISCOVERY OF ANY UNFORESEEN EXISTING CONDITION OR CONFLICT BETWEEN DRAWINGS.
  - WORK SHALL BE DONE IN A WORKMANLIKE MANNER BY EXPERIENCED CRAFTSMAN (LICENSED WHERE REQUIRED) IN ACCORD WITH THE DRAWINGS AND INSTRUCTIONS TO THE APPROVAL OF THE ARCHITECT/ INTERIOR DESIGNER UNLESS OTHERWISE SPECIFIED IN THE CONTRACT.
  - CONTRACTORS SHALL VERIFY ALL CONDITIONS AND DIMENSIONS AT THE JOBSITE PRIOR TO BIDDING AND/OR ORDERING MATERIALS AND EQUIPMENT AND NOTIFY THE ARCHITECT OF DISCREPANCIES BETWEEN CONDITIONS AND DRAWINGS. ANY CHANGE IN DIMENSIONS MUST BE APPROVED BY THE ARCHITECT BEFORE PROCEEDING WITH THE WORK.
  - CONTRACTOR IS RESPONSIBLE FOR COORDINATION OF ALL TRADES. A PRECONSTRUCTION MEETING IS SUGGESTED TO COORDINATE LOCATION AND ROUTING OF ALL PIPING, DUCTWORK, ETC.
  - IT IS THE GENERAL CONTRACTOR'S SOLE RESPONSIBILITY TO KEEP THE MUNICIPALITY UPDATED ON ANY ADDITIONAL CHANGE ORDER OR PLAN CHANGES THAT WILL AFFECT THE PERMIT APPROVED SET OF PLAN CHANGES WILL BE MADE WITHOUT WRITTEN APPROVAL FROM THE ARCHITECT/INTERIOR DESIGNER.
  - ALL MATERIALS USED IN THE PERMANENT CONSTRUCTION OF THIS WORK SHALL BE NEW, EXCEPT AS NOTED, FIRST QUALITY, FREE FROM DEFECTS AND INSTALLED AS PER MANUFACTURER'S RECOMMENDED PROCEDURES FOR THE APPLICATION AT HAND.
  - THE CONTRACTOR SHALL MAINTAIN A FULL SET OF COMPLETE AND CURRENT DRAWINGS AVAILABLE FOR REVIEW AT THE JOBSITE AT ALL TIMES. THE CONTRACTOR SHALL KEEP UP TO DATE "AS-BUILT" DRAWINGS AND SAME SHALL BE DELIVERED TO THE ARCHITECT UPON COMPLETION OF THE PROJECT PRIOR TO FINAL PAYMENT.
  - VERIFY ANY SPECIAL REQUIREMENTS, TEMPORARY FACILITIES, BUILDING STANDARDS, INSURANCE REQUIREMENTS, ETC. WITH THE BUILDING OWNER'S REPRESENTATIVE PRIOR TO BIDDING AND INCLUDE COSTS OF SAME.
  - CONTRACT SHALL BE EXECUTED ON AIA-A-191 (LATEST EDITION) COMPLETE WITH GENERAL CONDITIONS OR OTHER FORM ACCEPTABLE TO ALL PARTIES. THESE GENERAL NOTES AND CONDITIONS WILL GOVERN IF THE GENERAL CONDITIONS CONFLICT.
  - PROVIDE 5 ABC FIRE EXTINGUISHER # MAXIMUM 12000 TVOC. FINAL LOCATION TO BE GIVEN BY FIRE MARSHALL. UNLESS NOTED EXTINGUISHERS SHALL BE SURFACE MOUNTED ON APPROVED HANGERS WITH TOP # 48" AFF. (S)
  - SUBMIT SHOP DRAWINGS (WITH MATERIAL SAMPLES WHERE NECESSARY) FOR ALL CABINETRY AND MANUFACTURED ITEMS. ARCHITECT WILL RETAIN ONE COPY.
  - SUBMIT NOTICE OF ACCEPTANCE (NOA) FOR EXTERIOR EQUIPMENT IMPROVEMENTS.
  - CORRIDOR PARTITIONS, SMOKE STOP PARTITIONS, HORIZONTAL EXIT PARTITIONS, EXIT ENCLOSURES, AND FIRE RATED WALLS REQUIRED TO HAVE PROTECTED OPENINGS SHALL BE EFFECTIVELY AND PERMANENTLY IDENTIFIED WITH SIGNS OR STENCILING IN A MANNER ACCEPTABLE TO THE AUTHORITY HAVING JURISDICTION. SUCH IDENTIFICATION SHALL BE ABOVE ANY DECORATIVE CEILING AND IN CONCEALED SPACES. SUGGESTED WORDING: FIRE AND SMOKE BARRIER PROTECT ALL OPENINGS.
  - CONTRACTOR TO INSTALL PROPER BACKING IN ALL WALLS FOR BUILT-IN CABINETRY, TV'S, TOILET ACCESSORIES, ETC. ALL BACKING IN RATED WALLS AND OTHERS DETERMINED BY THE BUILDING OFFICIAL, SHALL BE FIRE TREATED WITH APPROVED FASTENERS.
  - ANY MATERIAL USED AS A FINISH SURFACE SHALL BE PROPERLY PROTECTED AFTER INSTALLATION. SURFACES TO RECEIVE FINISHES SHALL BE INSPECTED BY THE INSTALLER OF THE FINISH WHO WILL INFORM THE CONTRACTOR OF ANY REPAIR REQUIRED. ONCE THE FINISH INSTALLER HAS ACCEPTED THE SURFACE HE WILL BE RESPONSIBLE FOR THE FINAL PRODUCT.
  - SELECT PAINT TYPE AS RECOMMENDED BY MANUFACTURER FOR PARTICULAR APPLICATION. USE ONLY FIRST-LINE QUALITY PRODUCTS. APPLY PAINT IN ACCORDANCE WITH MANUFACTURER'S RECOMMENDATIONS USING APPLICATIONS AND TECHNIQUES BEST SUITED FOR SUBSTRATE AND TYPE OF MATERIALS BEING APPLIED. COMPLY WITH MANUFACTURER'S PUBLISHED RECOMMENDATIONS WITH RESPECT TO SURFACE PREPARATION, MIXING AND TINTING, APPLICATION PROTECTION, AND CLEAN-UP. COMPLETELY COVER SURFACES TO PROVIDE AN OPAQUE, SMOOTH SURFACE OF UNIFORM FINISH, COLOR, AND APPEARANCE.
  - BUILDING DOES NOT HAVE A FIRE SPRINKLER SYSTEM.
  - BUILDING DOES NOT HAVE A FIRE ALARM SYSTEM.
  - ALL CONSTRUCTION, ALTERATION AND DEMOLITION TO COMPLY WITH NFPA 241.
  - DEMOS TO BE REMOVED FROM SITE DAILY.
  - ALTERATION WORK COMPLETES WITH LEVEL 2 ALTERATIONS, PER FBC EXISTING BUILDING CODE 2011, CHAPTER 4.



**MB DESIGN ASSOCIATES, INC.**  
 FLORIDA LICENSE #: AA26000521

P.O. Box 4376  
 Tequesta, Florida 33469  
 phone: (561) 222-2993  
 email: tjmarais@aol.com

WILLIAM TRACY, #AR0014756

DATE:

THE FOLLOWING CODES WERE USED IN THE DESIGN OF THIS PROJECT:

- 2017 FLORIDA BUILDING CODE
- EXISTING BUILDING, BUILDING PLUMBING, FUEL GAS, MECHANICAL, TEST PROTOCOLS FOR HIGH VELOCITY HURRICANE ZONES, ACCESSIBILITY AND ENERGY
- 2011 NATIONAL ELECTRICAL CODE NFPA 70
- FLORIDA FIRE PREVENTION CODE, 6TH EDITION (INCLUDING NFPA 1, 2012 AND 101, 2015 EDITION) WITH FLORIDA AMENDMENTS

PROJECT NAME/LOCATION:

**PIONEERING DECISIVE SOLUTIONS**  
 JUPITER PARK OF COMMERCE  
 1100 PARK LANE SOUTH  
 UNITS 1 AND 2  
 JUPITER, FL 33458

I (WE) HAVE REVIEWED THESE DRAWINGS, UNDERSTAND THE WORK OUTLINED THEREON, AND HEREBY APPROVE SAME FOR CONSTRUCTION.

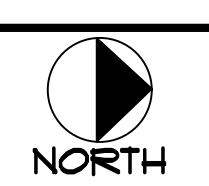
BY: \_\_\_\_\_

DATE: \_\_\_\_\_

JOB #: PIONEERING DEC SOL  
 DATE: 6-28-2018  
 SCALE: VARIES  
 DRAWN BY: MB

ISSUED:	REVISIONS:

**FLOOR PLAN**  
 SCALE: 1/4" = 1'-0"



5475 U.S.F.