

2656 & 2660 S. LA CIENEGA BOULEVARD

LOS ANGELES, CA 90034

FOR LEASE



CREATIVE OFFICE AND ART GALLERY SPACE IN THE CULVER CITY ARTS DISTRICT

WESTMAC COMMERCIAL BROKERAGE COMPANY

1515 S Sepulveda Boulevard, Los Angeles, CA 90025
310.478.7700 | Company DRE #01096973 | www.westmac.com

Gregory J. Batiste

Executive Vice President
DRE #01071488
batiste@westmac.com

WESTMAC

Commercial Brokerage Company

Property Information



Location

2656 & 2660 S La Cienega Blvd
Los Angeles, CA 90034
(Just North of Washington Blvd)

Available Space

Approximately 4,000 rentable square feet
Divisible to approximately 1,400 and 2,600 rentable square feet each

Rental Rate

\$3.25 per square foot, per month, modified gross

Parking

Eight [8] spaces

Occupancy

Immediately

Zoning

LACM

Building Features



- 18 foot ceilings
- Creative adaptive reuse warehouse
- Separate street entrance
- Polished Concrete floors
- Two [2] bathrooms with shower and kitchen
- HVAC with separate zone control/wired

Location Info:

- » Adjacent to brand new Cumulus District Development with 1,200 apartments and 100,000 square feet of destination retail.
- » Ten (10) minute walk to the Expo Line at La Cienega Metro Station (elongated and transfer-free new regional connector)
- » Prime Culver City location adjacent to Historic West Adams District

Location Info and Images

CLICK BELOW TO VISIT:

[CUMULUS DISTRICT](#)

[IVY STATION](#)

[THE CULVER STEPS](#)

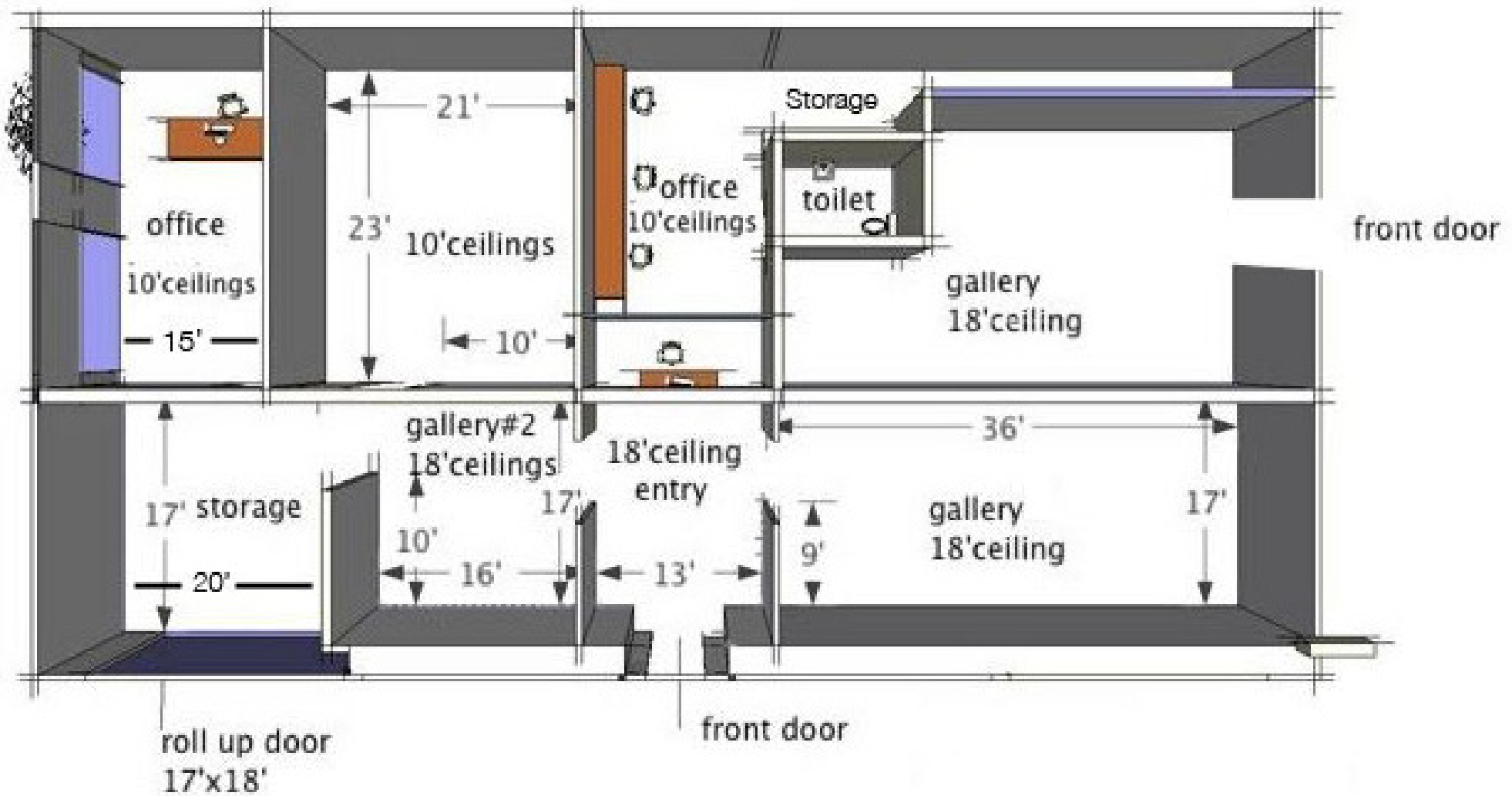
[PLATFORM LA](#)



Location Info Continued:

- » Close Proximity to many Culver City art galleries including Blum & Poe, Honor Fraser, Walter Maciel, and Anat Ebgi
- » Prime Location near 10 freeway and other major roadways and transit hubs
- » Other Entertainment and tech companies in the area include: Sony, Amazon, TikTok, HBO, Beats Music, Scopely, Kelly Slater Wave Company, Anonymous Content, Dream Machine, and Steel House
- » Just a few minutes from a variety of restaurants and amenities including, Highly Likely, Delicious Pizza, Mizala, Alta, Chef Josse Bistro, and a wide variety of other Culver City restaurants

Floor Plan





SONY PICTURES ENTERTAINMENT

SONY PICTURES ANIMATION

CULVER STUDIOS

AMAZON STUDIOS

BIG PICTURE ENTERTAINMENT

BEATS BY DRE

NIKE CO. - EXTENSION

IVY STATION
±500,000 SF OF OFFICE, RETAIL,
RESIDENTIAL, AND HOSPITALITY

APPLE CAMPUS

BIOPLATE

CUMULUS DEVELOPMENT
1,200 RESIDENTIAL UNITS
±200,000 SF OFFICE AND RETAIL

NEW CREATIVE OFFICE
±500,000 SF OF OFFICE, RETAIL,
RESIDENTIAL, AND HOSPITALITY

ZOIC STUDIOS

SCOPELY

WE WORK COWORKING

2656 & 2660
S La Cienega Blvd

OUTFRONT STUDIO

APPLE DEVELOPMENT
±70,000 SF

TREVER ABRAMSON ARCHITECTS

LA LOUVER ART GALLERY

THE LANDING ART GALLERY

Area Tenants

Area Tenants Continued



2656 & 2660
S La Cienega Blvd

- ALLOUCHE GALLERY LA
- THE COMPOUND
- VOX MEDIA
- VOX RESIDENCES
- ZOIC STUDIOS
- JAM CITY HQ
- KELLY SLATER WAVE COMPANY
- BOMEL CONSTRUCTION
- 5TH KIND MEDIA
- LIV ENTERTAINMENT GROUP
- BRANDIN PHOTOGRAPHY
- LA GREEN GROUNDS
- THE VAULT
- ROBERT KUO GALLERY
- BALDWIN HILLS REC CENTER

Attractions

- Arclight Theater
- Ballona Creek Bike Path
- Culver City Farmers Market
- Culver Hotel
- Culver Steps
- Ivy Station Hotel
- Kirk Douglas Theater

Daily

- CVS
- Ralphs
- Whole Foods
- Sprouts
- Trader Joes
- Superior Grocers
- Natural Foods

Fitness

- Cliffs Of Id
- Equinox
- Orange Theory Fitness
- Shanti Yoga
- Soul Cycle
- Sweat Pilates

Retail

- Helms Bakery District
- Culver Steps Shops
- Ho-Lo Liquor
- Ivy Station
- Midland Shops
- Platform Shops
- Rolling Green



Area Amenities

2656 & 2660
S La Cienega Blvd

Coffee

- Adams Coffee Shop
- Bar Nine
- Boba Guys
- CJS Cafe
- Cognoscente Coffee
- Conservatory for Coffee and Tea
- Highly Likely

Drinks

- Blind Barber
- Brunello Trattoria
- City Tavern Culver City
- Industry Cafe and Jazz
- Mandrake Bar
- Public School 310
- Seventy7 Lounge
- The Velvet Lounge

Restaurants

- Alta
- Akasha
- Amacita
- Coolhaus
- Delicious Pizza
- Destroyer
- Fathers Office
- Jr' BBQ
- Loqui
- Lukshon
- Margot
- Mian
- Mizalda
- Roberta
- Tender Greens
- Vespertine



Property Amenities



Microsoft



SOULCYCLE



wework



HBO



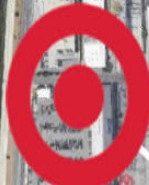
SCOPELY



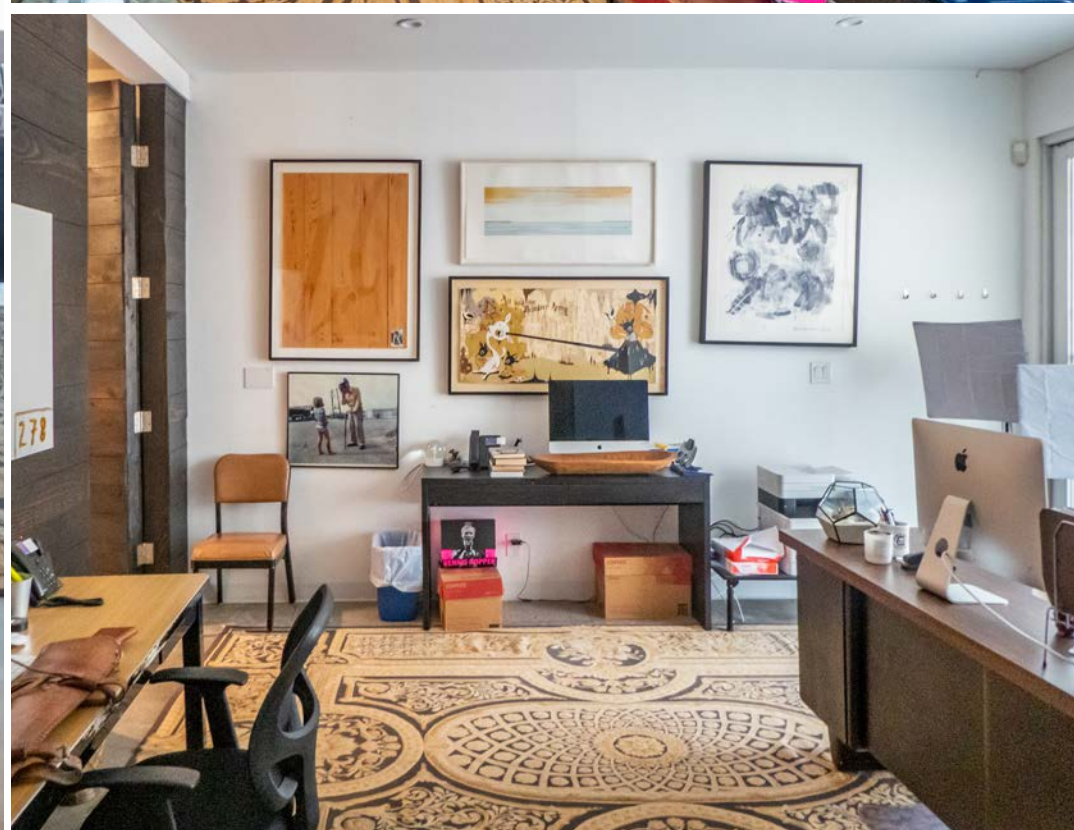
TRADER JOE'S



SONY PICTURES

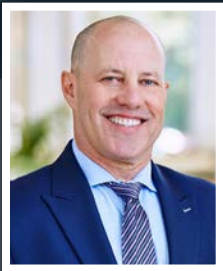


Property Photographs





Exclusively Listed by:



Gregory J. Batiste
Executive Vice President
DRE #01071488
batiste@westmac.com
310.966.4343

WESTMAC
Commercial Brokerage Company

WESTMAC COMMERCIAL BROKERAGE COMPANY

1515 S Sepulveda Boulevard, Los Angeles, CA 90025 | 310.478.7700 | www.westmac.com | Company DRE #01096973