

111 Acres For Sale in Olathe



RED Brokerage



WWW.REDBROKERAGE.COM

22340 W 183RD STREET • OLATHE, KS 66062

PROPERTY DETAILS

- **Available Acreage:** +/- 111 Acres For Sale
- **Use:** Multi-Family or Single Family Residential
- **Highway Access:** 2.5 Miles to I-35 & 1.2 Miles to 169 HWY
- **Utilities:** Available on-site or on Adjacent Property
- **Sale Price:** \$4,593,402.00 (\$0.95/SF)

FOR MORE INFORMATION:

CORY DELONG
816.876.2502

cdelong@redbrokerage.com

BRENT PETERSON
816.777.2848

bpeterson@redbrokerage.com

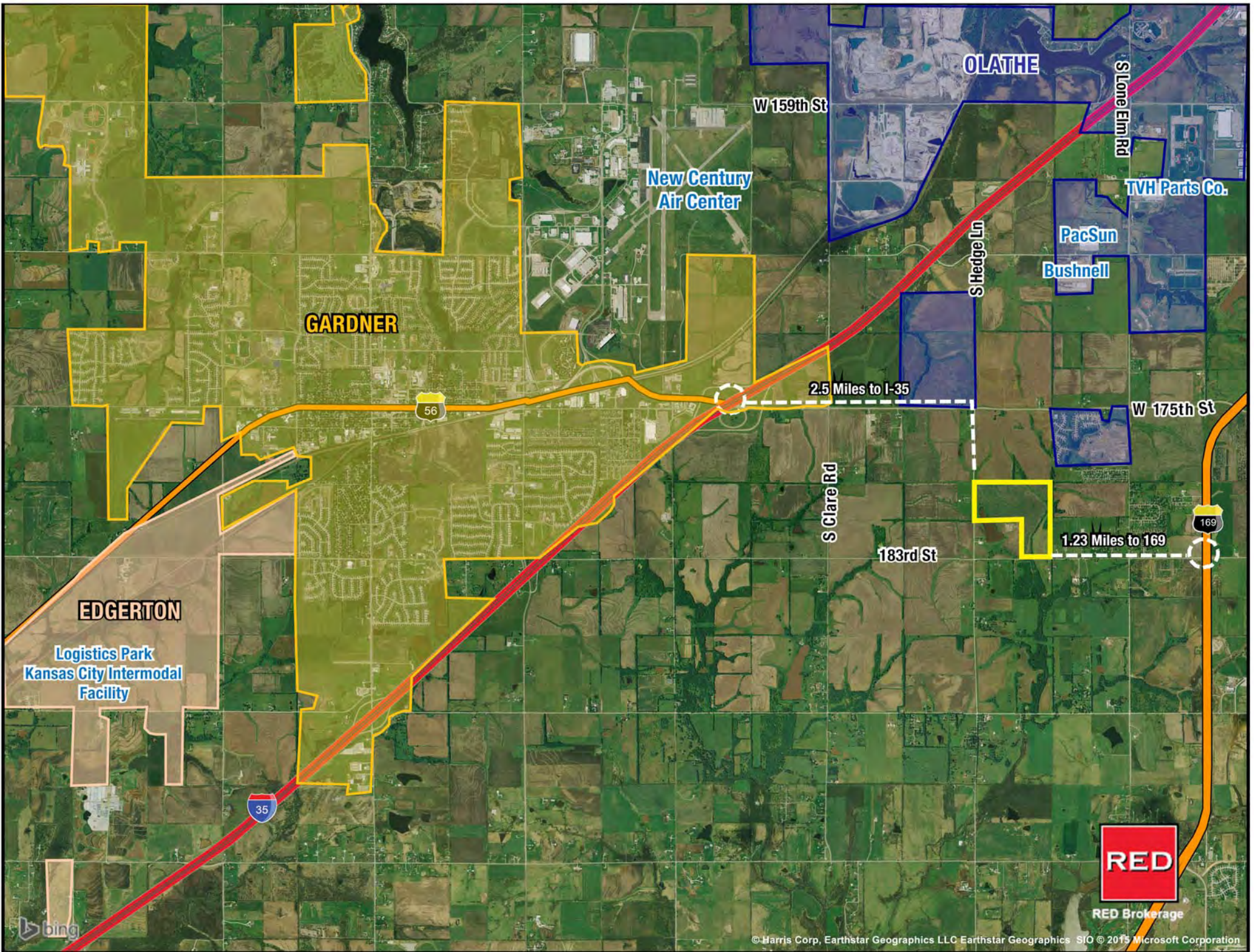
RED BROKERAGE, LLC

4717 CENTRAL

KANSAS CITY, MO 64112

816.777.3500

The information used to create this brochure was gathered from sources deemed reliable. Though we do not doubt its accuracy, we do not guarantee or warranty it. You and your advisors should conduct a careful independent investigation of the information to determine your satisfaction and suitability.



OLATHE

W 159th St

New Century
Air Center

S Lone Elm Rd

TVH Parts Co.

PacSun

Bushnell

GARDNER

S Hedge Ln

2.5 Miles to I-35

56

W 175th St

S Clare Rd

1.23 Miles to 169

169

183rd St

EDGERTON

Logistics Park
Kansas City Intermodal
Facility

35



RED Brokerage

