

FOR LEASE

5661 LA JOLLA BLVD, LA JOLLA



1,875 - 7,500 SF

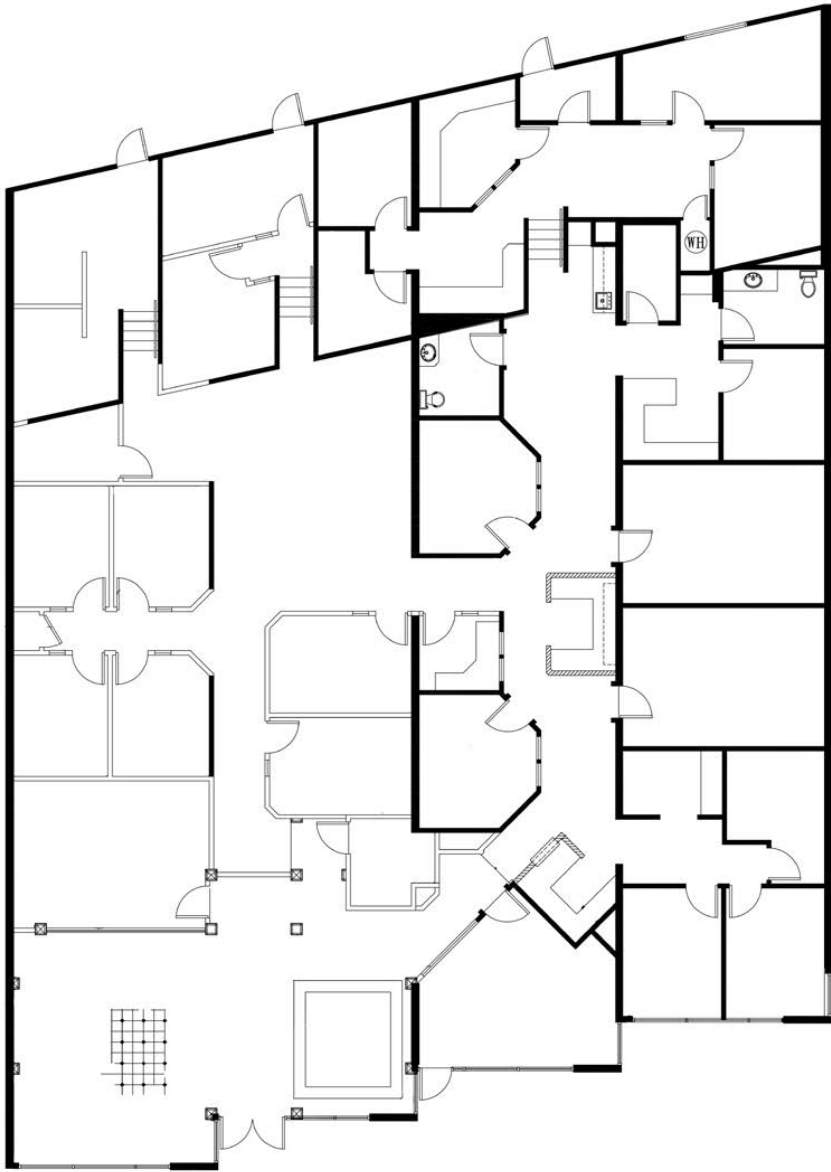
Chris Musgjerd

619-913-9636

Connor Hofmann

858-200-6302

CURRENT FLOOR PLAN



7,500 SF



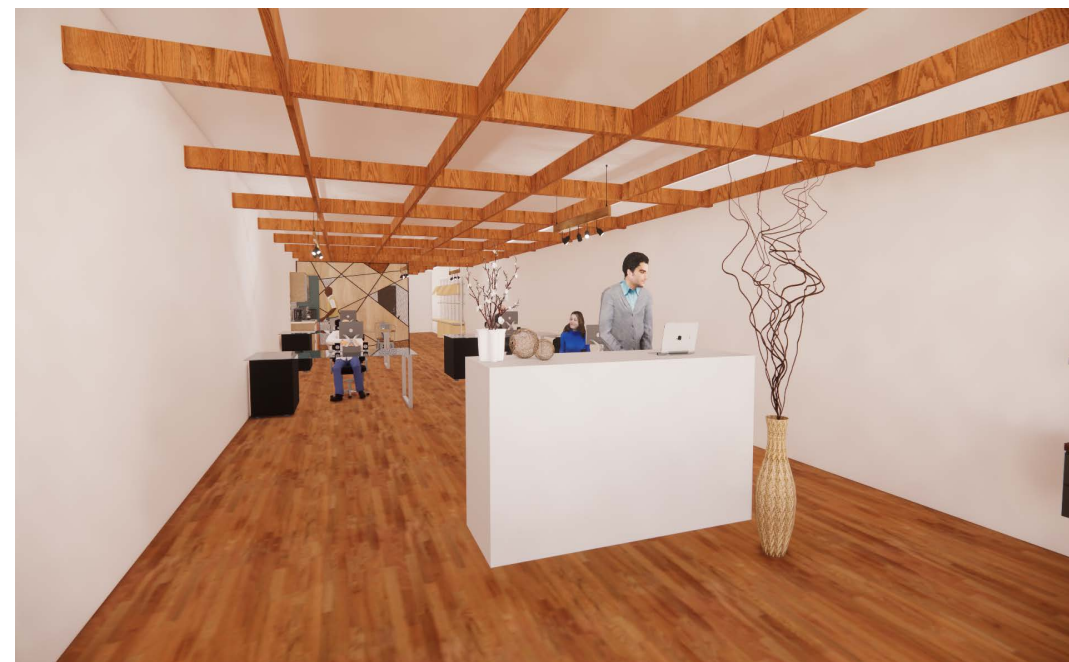
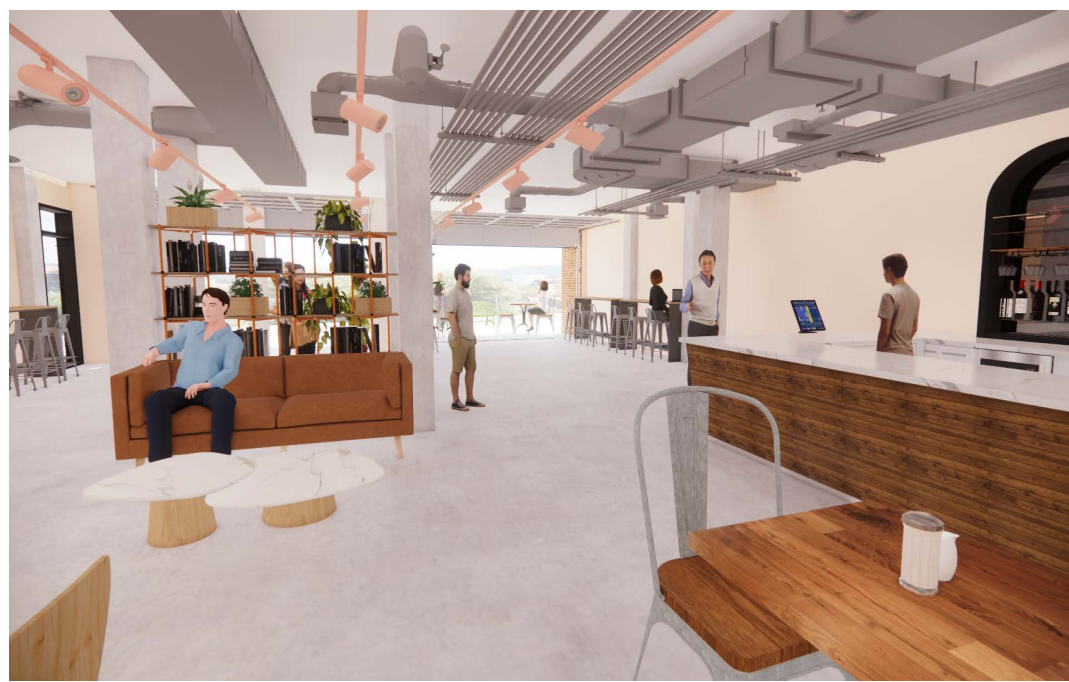
FEATURES

- The building is 7,500 SF
- It can be demised in half to 3,750 SF
- Or, demised to four (4) equal 1,875 SF spaces
- All configurations are street facing
- Directly across from Beaumonts
- Next to Bird Rock Coffee
- **Office, Retail, Restaurant, Fitness, Creative Uses will be considered**
- Abundant Street Parking
- Call Broker for Details

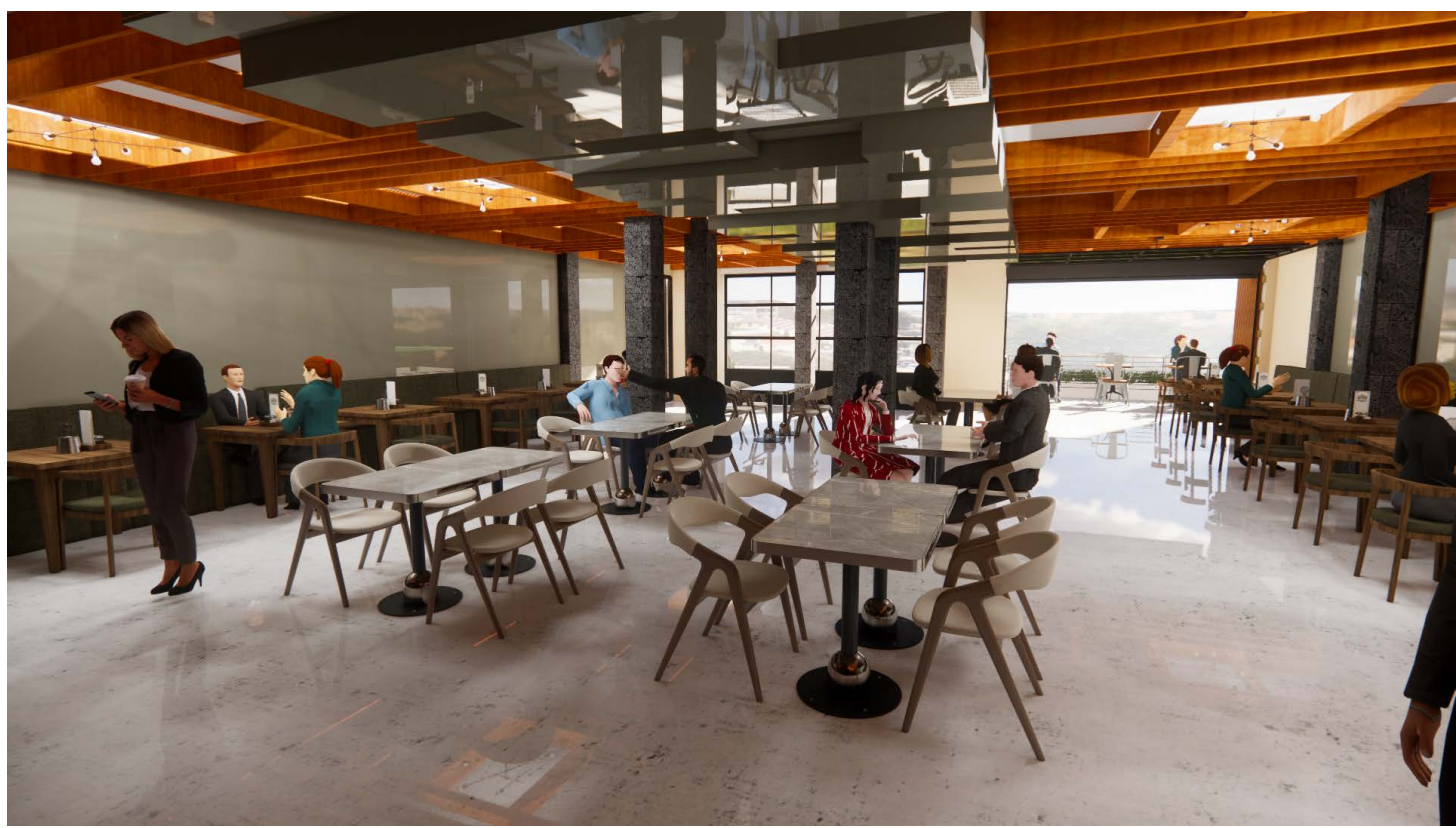
HYPOTHETICAL USES



HYPOTHETICAL USES



HYPOTHETICAL USES



HYPOTHETICAL USES

