



Property Highlights:

- Office & Business Incubator Space
- Located in the Midtown Corridor
- Free Parking
- Internet Fiber
- Onsite Management
- RTA Healthline in Tech Corridor
- Easy Freeway Access
- Minutes from Cleveland Clinic and Downtown
- 100 -2,700 SF Unit Available

Eric Purcell | 216.702.4066 | eric@citiroc.com

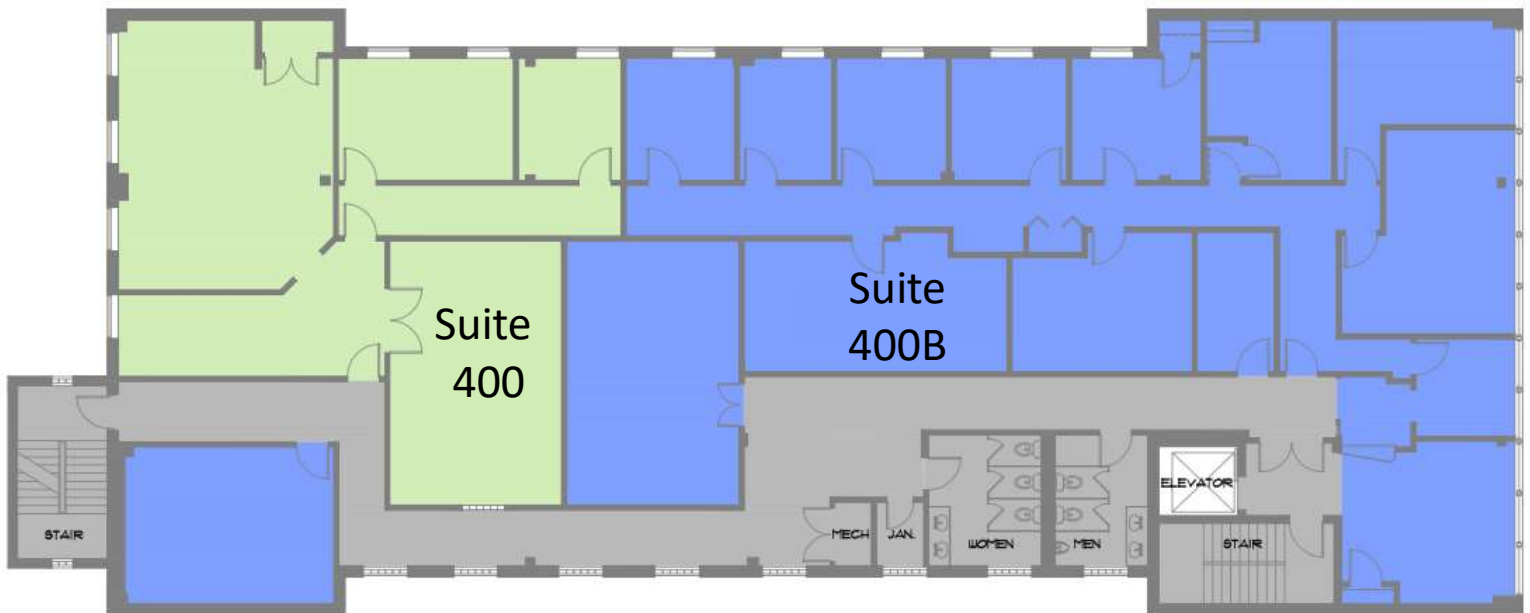


Eric Purcell | 216.702.4066 | eric@citiroc.com



Eric Purcell | 216.702.4066 | eric@citiroc.com

2728 Euclid Ave – 4th Floor	
Suite 400	2,700 RSF
Suite 400B	4,040 RSF



Eric Purcell | 216.702.4066 | eric@citiroc.com

2800 Euclid Ave	
Suite 201	1,232 RSF



Eric Purcell | 216.702.4066 | eric@citiroc.com

2800 Euclid Ave	
Suite 509	1,205 RSF
Suite 515	1,540 RSF
Suite 500 (Incubator)	100 RSF
Suite 517 (Incubator)	101 RSF
Suite 518 (Incubator)	100 RSF



Eric Purcell | 216.702.4066 | eric@citiroc.com

Midtown-Health Tech Corridor



Everything your business needs to grow and thrive – entrepreneurial support services, venture capital funding, a community of like-minded innovators, thought leaders at the academic and health-care institutions, local manufacturing capacity and expertise, a highly skilled workforce, and a commitment from the public sector to help small businesses expand. Choose from 4 different addresses with spaces from 100 to 15,000 square feet.



635 W. Lakeside Avenue #100 Cleveland, OH 44113

Eric Purcell
 Licensed Real Estate Agent
 216.702.4066/eric@citiroc.com