



LARKSPUR LANDING
CIRCLE, LARKSPUR

Trevor Buck
Executive Director
+1415 451 2436
trevor.buck@cushwake.com
LIC #01255462

Brian Foster
Managing Director
+1415 451 2437
brian.foster@cushwake.com
LIC #01393059

Heather Trimble
Associate
+1415 299 6683
heather.trimble@cushwake.com
LIC #02041605



PROPERTY DESCRIPTION

100 Larkspur Landing Circle is a class 'A' office space located on the corner of Larkspur Landing Circle and Sir Francis Drake Boulevard. Situated directly across the street from the Golden Gate Ferry with easy access to both Highway 101 and Interstate 580, this office is right in the heart of Larkspur- perfect for commuters. Also across the street is the Marin Country Mart; offering a multitude of food and retail options.

The building features a retractable roof in the spacious lobby with on-site showers and lockers. 3 conference rooms, able to seat 15-25 people each, and already connected to high speed cable TV and Internet service. This space is perfect for the local business owner and their employees, no matter where they are commuting from!



Trevor Buck
Executive Director
+1415 451 2436
trevor.buck@cushwake.com
LIC #01255462

Brian Foster
Managing Director
+1415 451 2437
brian.foster@cushwake.com
LIC #01393059

Heather Trimble
Associate
+1415 299 6683
heather.trimble@cushwake.com
LIC #02041605



Property Highlights:

- Balcony access from each suite
- Covered & secure parking | 3/1000
- Common areas & shared conference rooms
- Commercial breakroom & kitchen
- Showers & locker room
- Roof retracts for open air
- \$4.50/ PSF Full Service



RUSTIC
BAKERY



BED BATH &
BEYOND

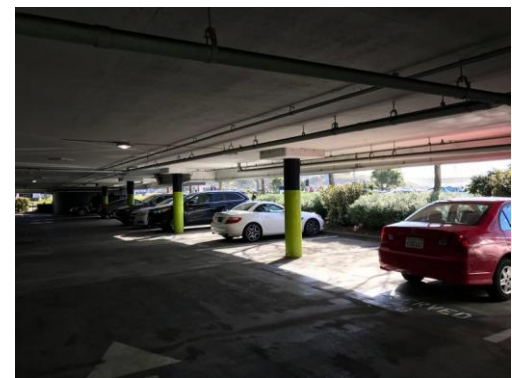
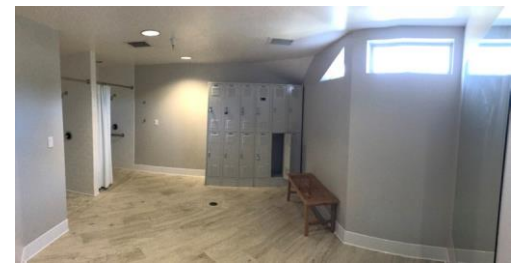
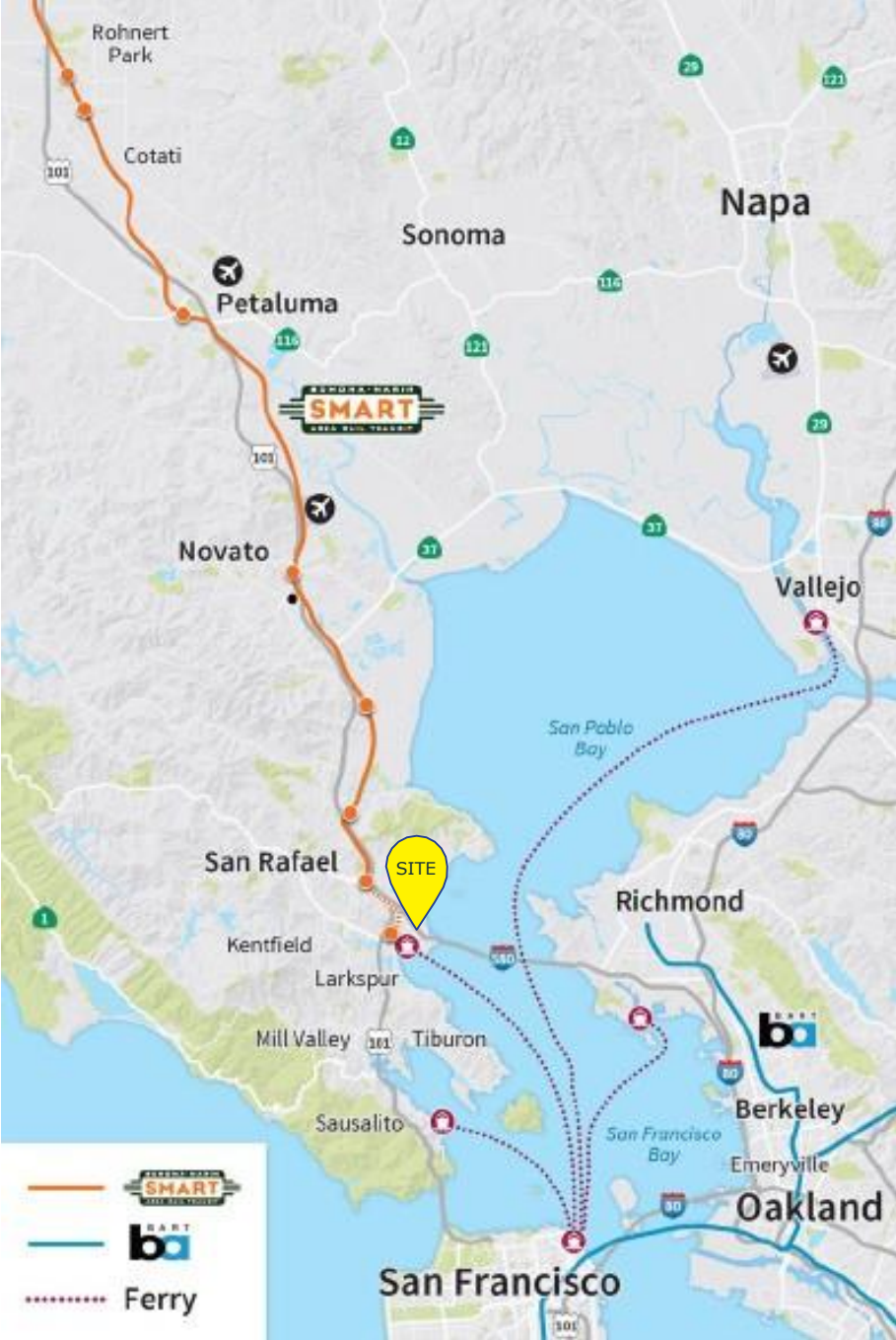


Trevor Buck
Executive Director
+1415 451 2436
trevor.buck@cushwake.com
LIC #01255462

Brian Foster
Managing Director
+1415 451 2437
brian.foster@cushwake.com
LIC #01393059

Heather Trimble
Associate
+1415 299 6683
heather.trimble@cushwake.com
LIC #02041605



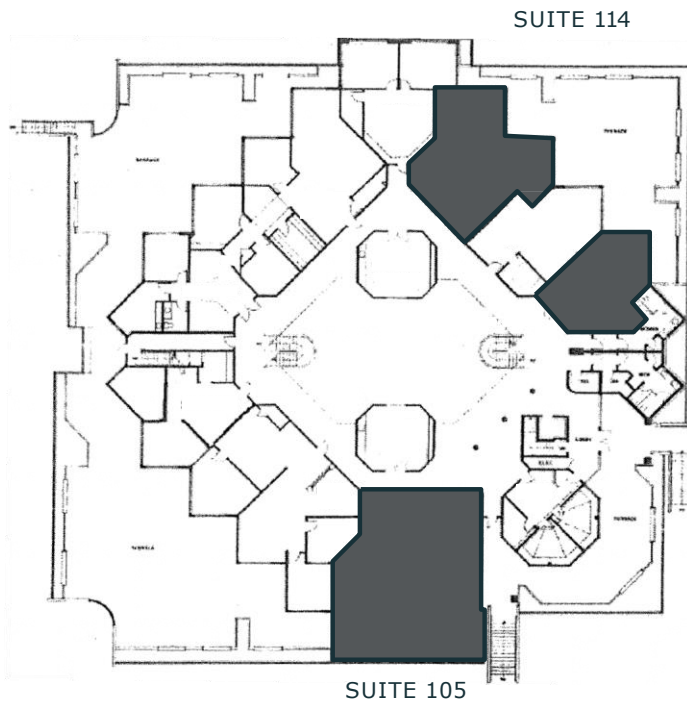


Trevor Buck
 Executive Director
 +1415 451 2436
trevor.buck@cushwake.com
 LIC #01255462

Brian Foster
 Managing Director
 +1415 451 2437
brian.foster@cushwake.com
 LIC #01393059

Heather Trimble
 Associate
 +1415 299 6683
heather.trimble@cushwake.com
 LIC #02041605





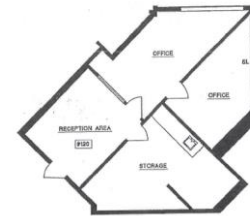
SUITE 120



SUITE 105



SUITE 114



SUITE 120



LARKSPUR LANDING
CIRCLE, LARKSPUR

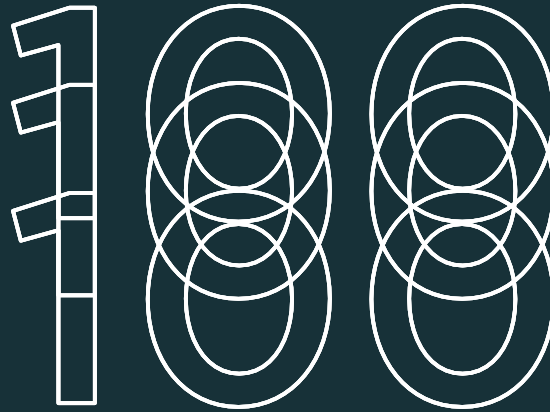
- Suite 105: 2,290 SF 5 offices, reception, and kitchen/storage
- Suite 114: 1,469SF 2 offices and a large storage room
- Suite 120: 841 SF Open floor plan

Trevor Buck
Executive Director
+1415 451 2436
trevor.buck@cushwake.com
LIC #01255462

Brian Foster
Managing Director
+1415 451 2437
brian.foster@cushwake.com
LIC #01393059

Heather Trimble
Associate
+1415 299 6683
heather.trimble@cushwake.com
LIC #02041605





LARKSPUR LANDING

CIRCLE, LARKSPUR

Trevor Buck
Executive Director
+1415 451 2436
trevor.buck@cushwake.com
LIC #01255462

Brian Foster
Managing Director
+1415 451 2437
brian.foster@cushwake.com
LIC #01393059

Heather Trimble
Associate
+1415 299 6683
heather.trimble@cushwake.com
LIC #02041605

