

309 Main St E

Ashland

\$950



PROPERTY INFORMATION

MLS # **6106865**
 Old MLS Number
 Status **ACTIVE**
 Class **COMMERCIAL**
 Sub Type **Commercial**

Number of Units **1**
 Total Fin Sq Ft **1,449**
 Year Built **0**
 Waterfront **No**
 Waterfront Name
 Waterfront Type
 Waterfrontage - ft
 Days On Market **98**
 Price Per SQFT **\$0.66**
 Tax Year **2022**
 Tax Amount **\$850.42**
 Assessments **Unknown**

UNIT INFORMATION

	UNIT #1	UNIT #2	UNIT #3	UNIT #4
Unit	Lower Unit			
Unit Level	Main			
Unit Square Footage	1,449			
# of Rooms	5			
# of Bedrooms				
# of Baths	1			

PUBLIC REMARKS

Great commercial space located on Main Street in downtown Ashland! A welcoming, bright waiting area invites you in and then opens into a multitude of spacious opportunities. The owner will build to suit to fit your business or office space. The back area has soaring ceilings and an antique freight elevator that adds some special character. Anchor your business in the heart of downtown Ashland with excellent exposure just a block from Lake Superior.

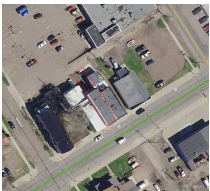
STORIES

CONSTRUCTION Frame/Wood
ROAD FRONTAGE Curb/Gutters, Paved, Sidewalk, Street Lights,
AMENITIES Restrooms, Storage

HEAT

SEWER
WATER
PARKING

Forced Air, Natural Gas, Electric
 City
 City
 Off Street Parking



Anthony Jennings & Crew Real Estate LLC
Main: 715-292-6513
315 Turner Rd
Ashland WI 54806

