

**Wiggins Lockett
Thompson**
Chartered Surveyors

OFFICES TO LET

**MAPLE HOUSE
KINGSWOOD BUSINESS PARK
HOLYHEAD ROAD
ALBRIGHTON
WOLVERHAMPTON WV7 3AU**



- Modern Rural Office Park
- Ground Floor Office - 182 sq m (1,959 sq ft)
- 6 Allocated Car-Parking Spaces Included
- 50 mb Fibre Optic Broadband Facility Available To Site
- EPC Rating – D(88)

LOCATION

Kingswood Business Park is located 11 miles from Telford and 6 miles from Wolverhampton in the West Midlands. The estate is just off the Holyhead Road, close to the M54 J3.

DESCRIPTION

Kingswood consists of several self-contained office buildings on a privately managed site, accessible off a private drive. Existing occupiers include The NFU, Global Draw, The Rok Group and Emag. The suite comprises a multi-suite ground floor collection of rooms with kitchenette & parking.

RENT

£17,750 per annum exclusive. VAT, Service Charge and Business Rates are in addition.

VIEWINGS

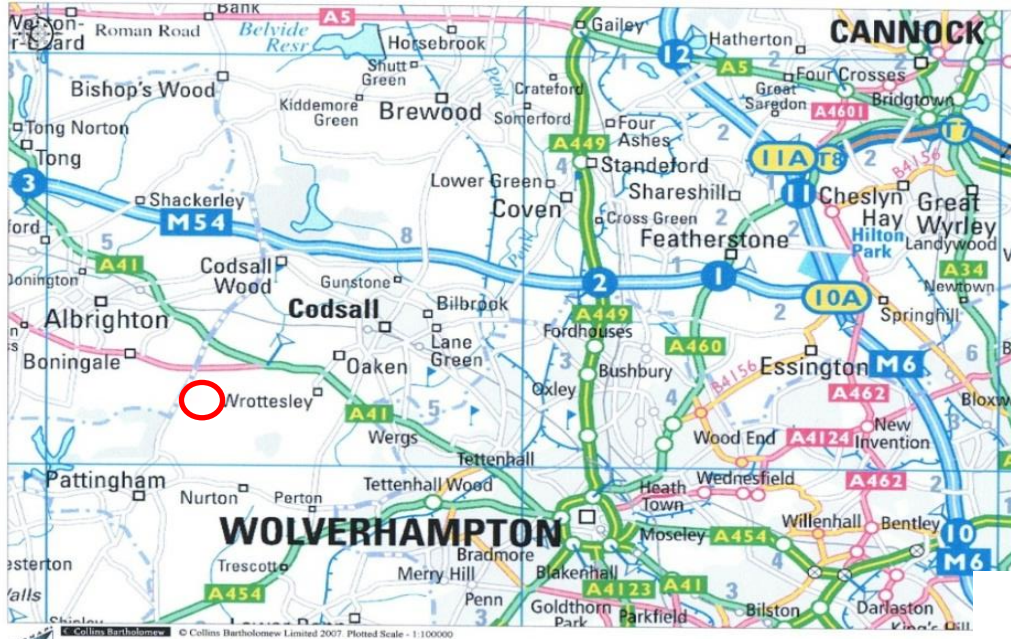
For further information or to arrange an inspection, please contact Anthony Wiggins on 01902 229550 or 01952 603303.

•Subject to Contract •Full EPC available on request •Details updated 06-17.

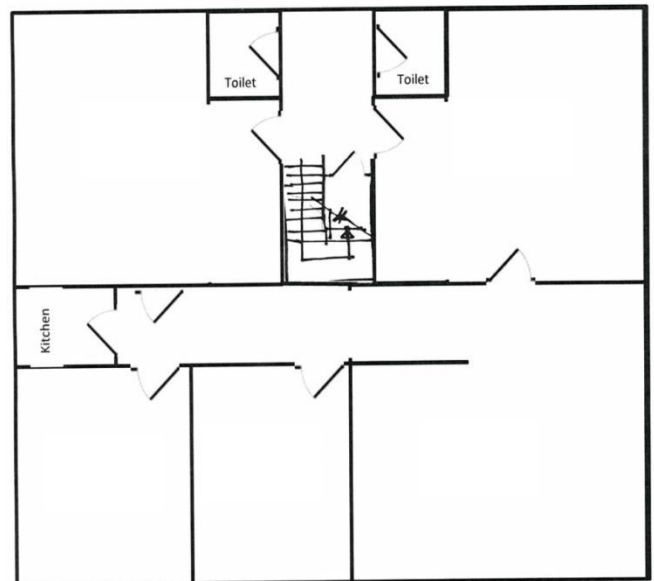
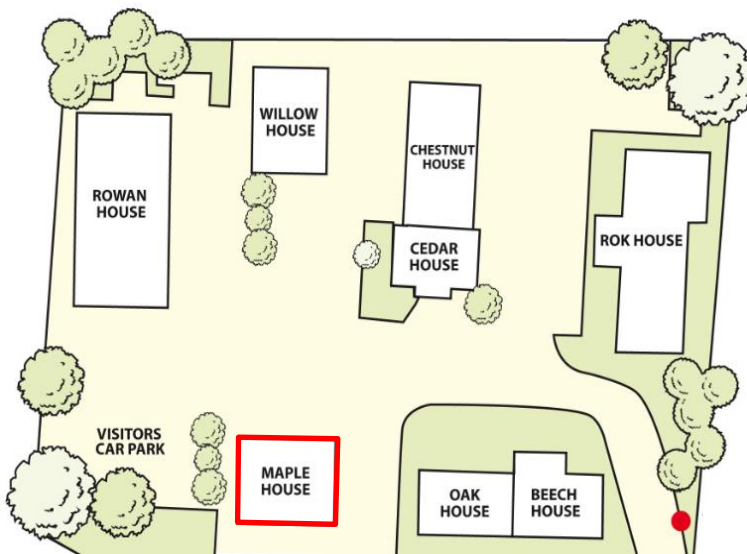
Wiggins Lockett Thompson Limited
2nd Floor, 14-16 High Street,
Ironbridge, Telford, Shropshire TF8 7AD
Tel: 01952 603303/01902 229550
Fax: 01952 603301

4 Olton Bridge,
245 Warwick Road, Solihull,
West Midlands B92 7AH
Tel: 0121 706 4326
Fax: 0121 706 2791





This map was created with Promap



Important Notice

Wiggins Lockett Thompson Ltd. for themselves and for the vendors or lessors of this property whose agents they are give notice that:

- (i) the particulars are set out as a general outline only for the guidance of intending purchasers or lessees and do not constitute nor constitute part of an offer or contract. (ii) all descriptions, dimensions, references to condition and necessary permissions for use and occupation and other details are given in good faith and are believed to be correct but any intending purchasers or tenants should not rely on them as statements or representations of fact but must satisfy themselves by inspection or otherwise as to the correctness of each of them. (iii) no person in the employment of Wiggins Lockett Thompson Ltd. has any authority to make or give any representation or warranty whatever in relation to this property. (iv) all rentals and prices are quoted exclusive of VAT. (v) the reference to any plant, machinery, equipment, fixtures and fittings at the property shall not constitute a representation (unless otherwise stated) as to its state and condition or that it is capable of fulfilling its intended function. Prospective purchasers/tenants should satisfy themselves as to the fitness of such items for their requirements. (vi) Any movable contents, fixtures and fittings referred to in these particulars (including any shown in photographs) are excluded from the sale/letting, unless stated otherwise.