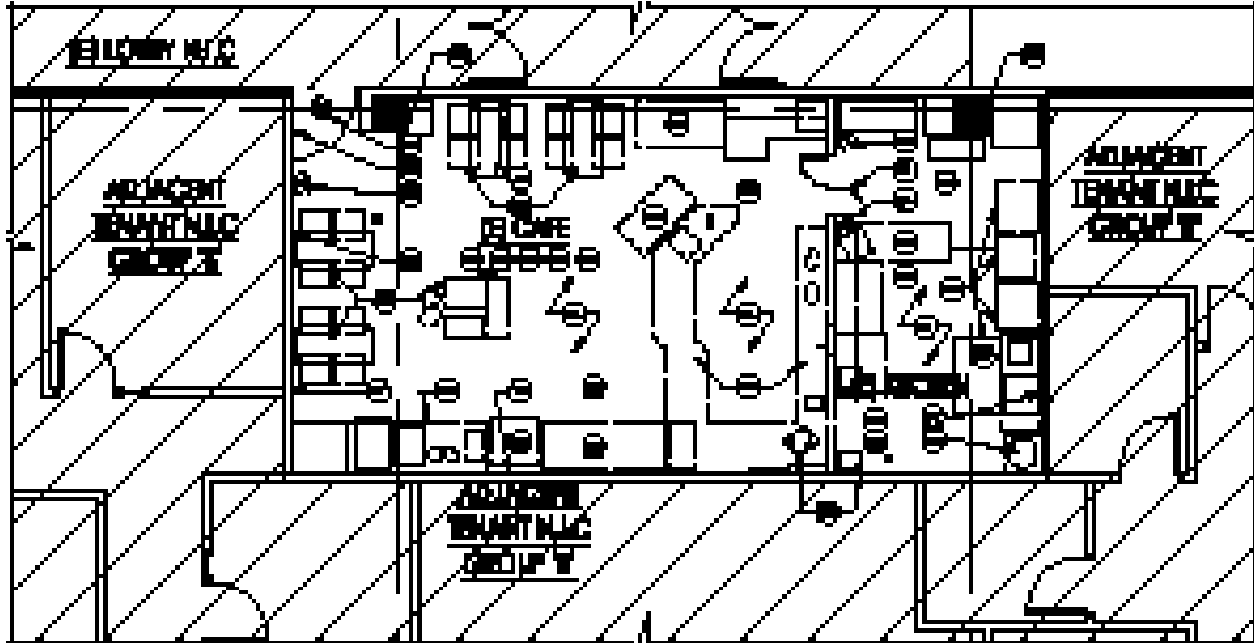




One Park Place

621 NW 53rd Street, Boca Raton FL 33487

FIRST FLOOR CAFE - 920 SF



FOR MORE INFORMATION, PLEASE CONTACT:

Brady Titcomb
Vice President
+ 1 954 653 3222
brady.titcomb@am.jll.com

Cameron Tallon
Vice President
+1 305 960 8407
cameron.tallon@am.jll.com

Eric Groffman
Executive Vice President
+1 305 347 5277
eric.groffman@am.jll.com



Scan to view
property video

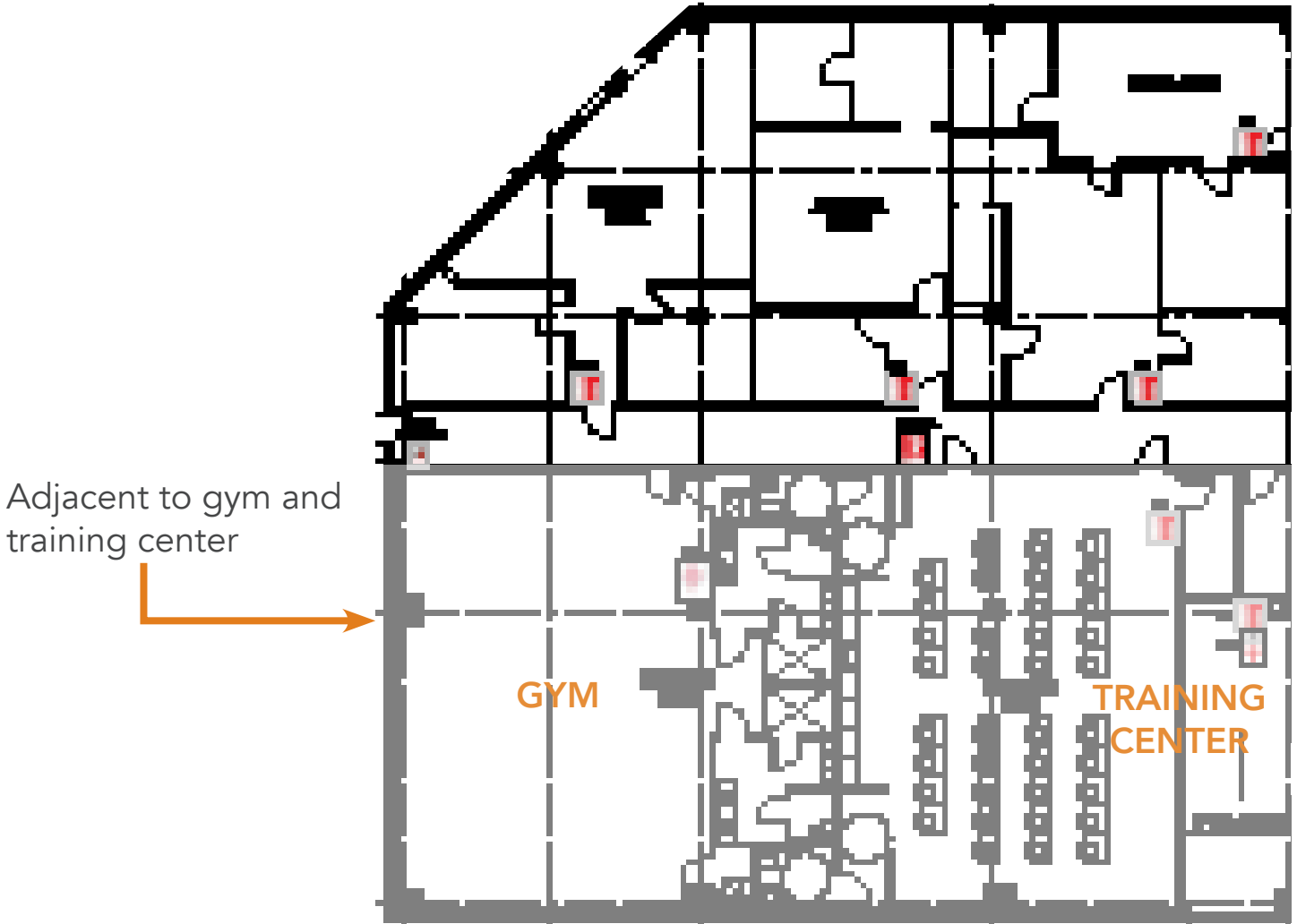




One Park Place

621 NW 53rd Street, Boca Raton FL 33487

SUITE 110 - 4,000 SF



FOR MORE INFORMATION, PLEASE CONTACT:

Brady Titcomb
Vice President
+ 1 954 653 3222
brady.titcomb@am.jll.com

Lic. Real Estate Brokers

Cameron Tallon
Vice President
+1 305 960 8407
cameron.tallon@am.jll.com

Eric Groffman
Executive Vice President
+1 305 347 5277
eric.groffman@am.jll.com



Scan to view
property video

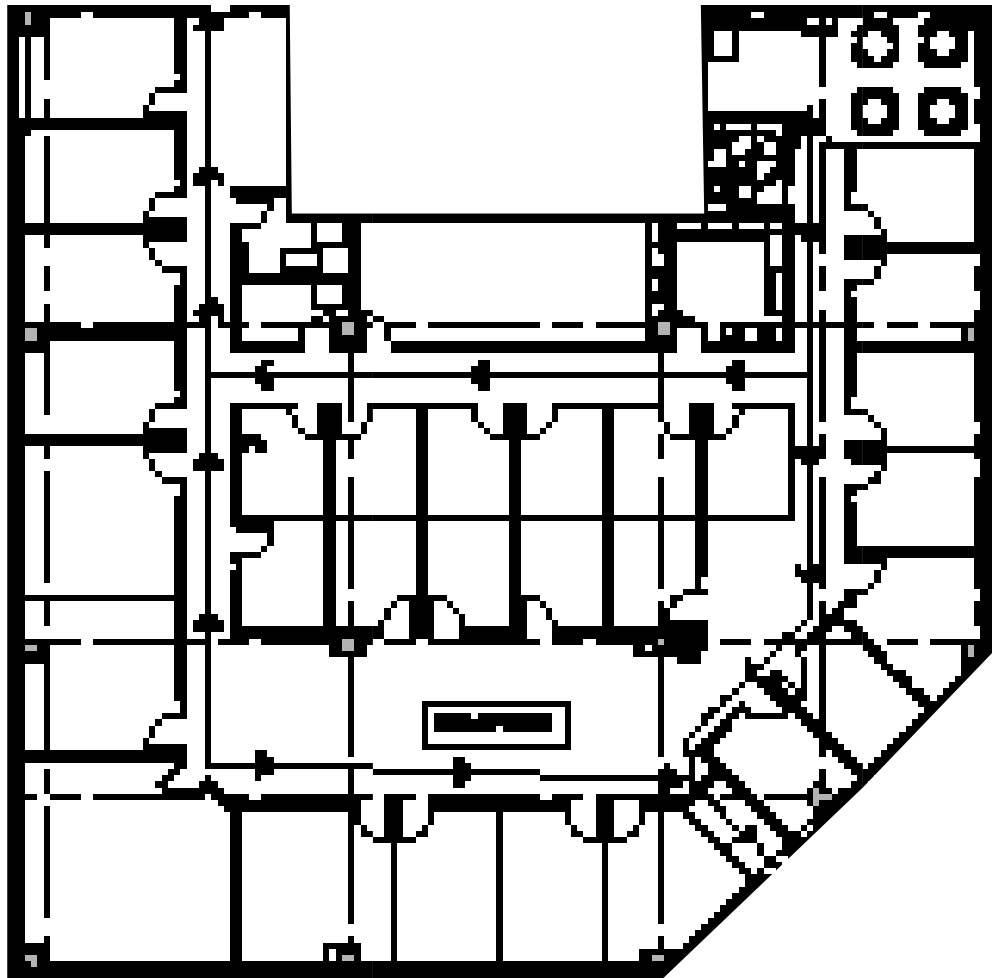




One Park Place

621 NW 53rd Street, Boca Raton FL 33487

SUITE 125 - 8,140 SF



FOR MORE INFORMATION, PLEASE CONTACT:

Brady Titcomb
Vice President
+ 1 954 653 3222
brady.titcomb@am.jll.com

Lic. Real Estate Brokers

Cameron Tallon
Vice President
+1 305 960 8407
cameron.tallon@am.jll.com

Eric Groffman
Executive Vice President
+1 305 347 5277
eric.groffman@am.jll.com



Scan to view
property video

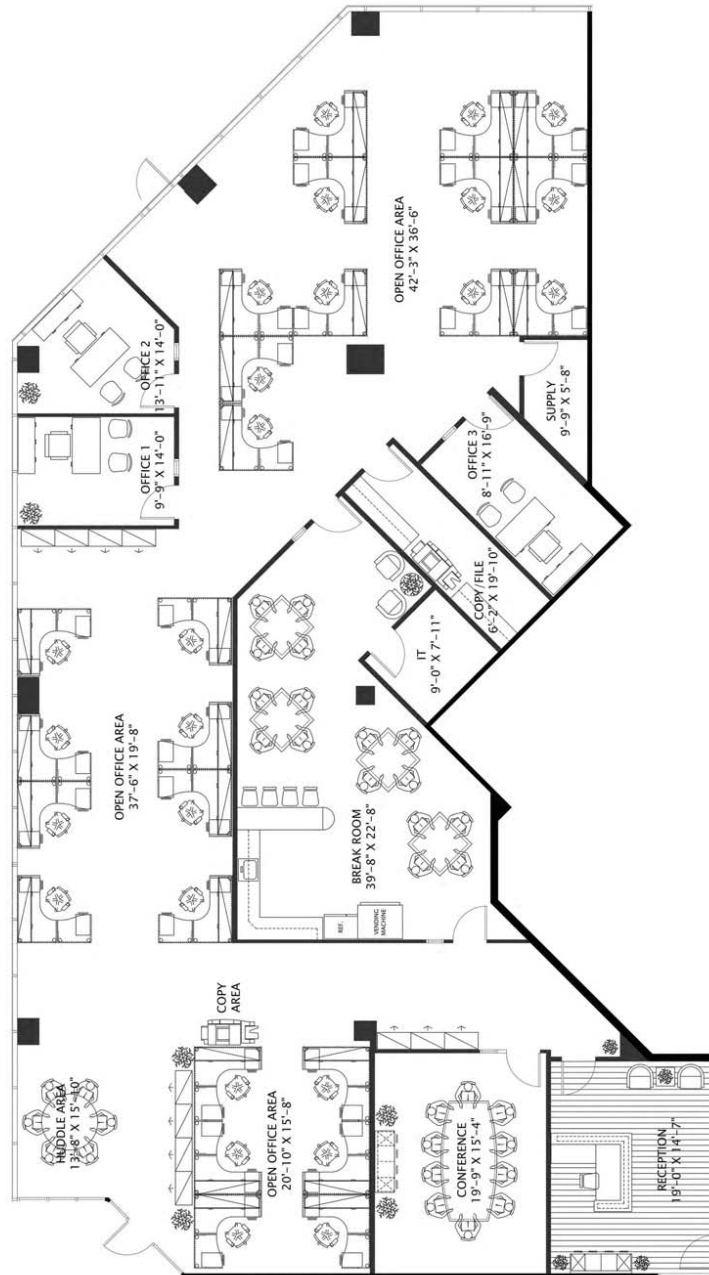




One Park Place

621 NW 53rd Street, Boca Raton FL 33487

SUITE 175 - 6,044 SF



FOR MORE INFORMATION, PLEASE CONTACT:

Brady Titcomb
Vice President
+ 1 954 653 3222
brady.titcomb@am.jll.com

Cameron Tallon
Vice President
+1 305 960 8407
cameron.tallon@am.jll.com

Eric Groffman
Executive Vice President
+1 305 347 5277
eric.groffman@am.jll.com



Scan to view
property video

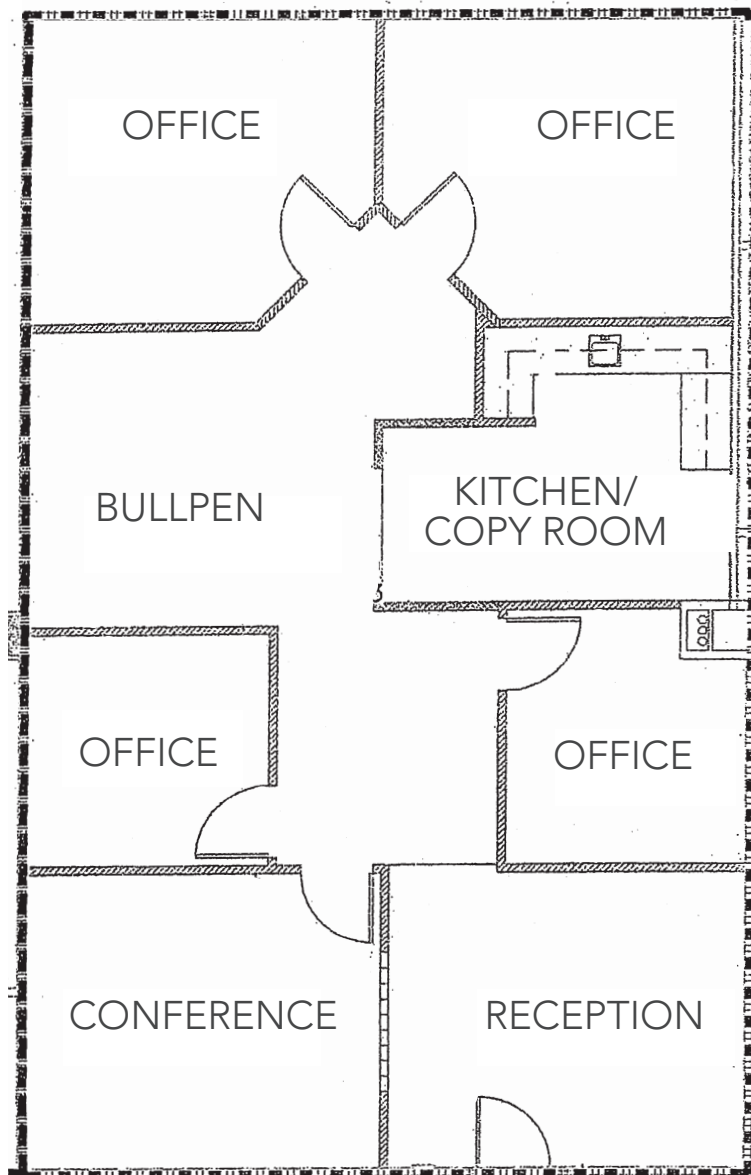




One Park Place

621 NW 53rd Street, Boca Raton FL 33487

SUITE 320 - 1,828 SF



FOR MORE INFORMATION, PLEASE CONTACT:

Brady Titcomb
Vice President
+ 1 954 653 3222
brady.titcomb@am.jll.com

Lic. Real Estate Brokers

Cameron Tallon
Vice President
+1 305 960 8407
cameron.tallon@am.jll.com

Eric Groffman
Executive Vice President
+1 305 347 5277
eric.groffman@am.jll.com



Scan to view
property video

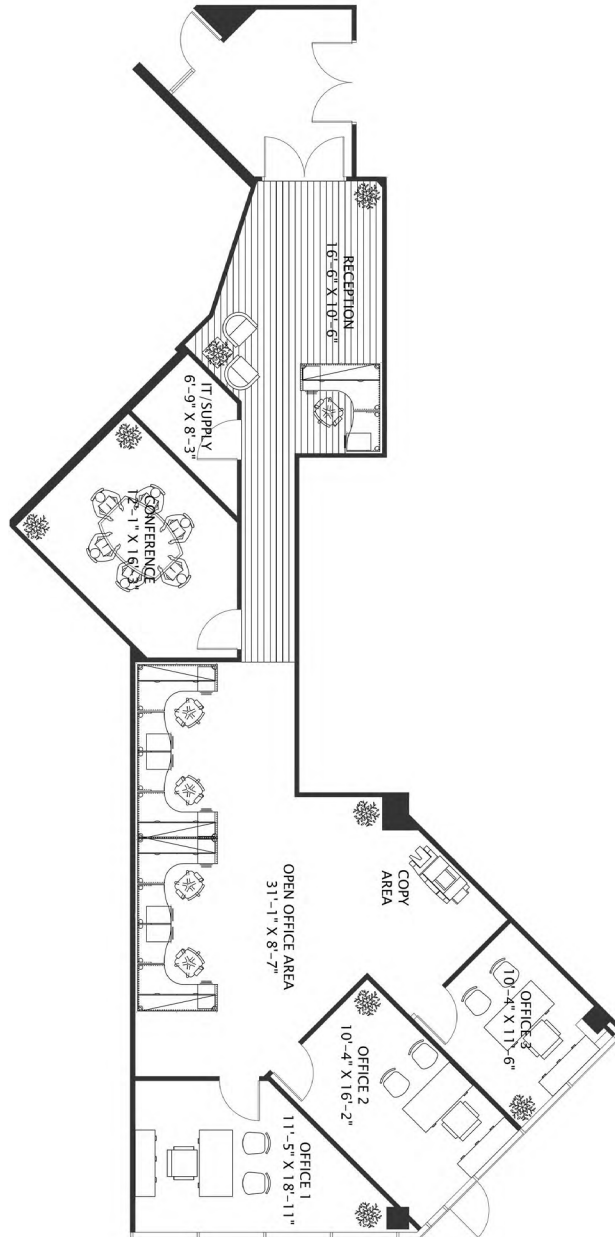




One Park Place

621 NW 53rd Street, Boca Raton FL 33487

SUITE 340 - 1,886 SF



FOR MORE INFORMATION, PLEASE CONTACT:

Brady Titcomb
Vice President
+ 1 954 653 3222
brady.titcomb@am.jll.com

Cameron Tallon
Vice President
+1 305 960 8407
cameron.tallon@am.jll.com

Eric Groffman
Executive Vice President
+1 305 347 5277
eric.groffman@am.jll.com



Scan to view
property video

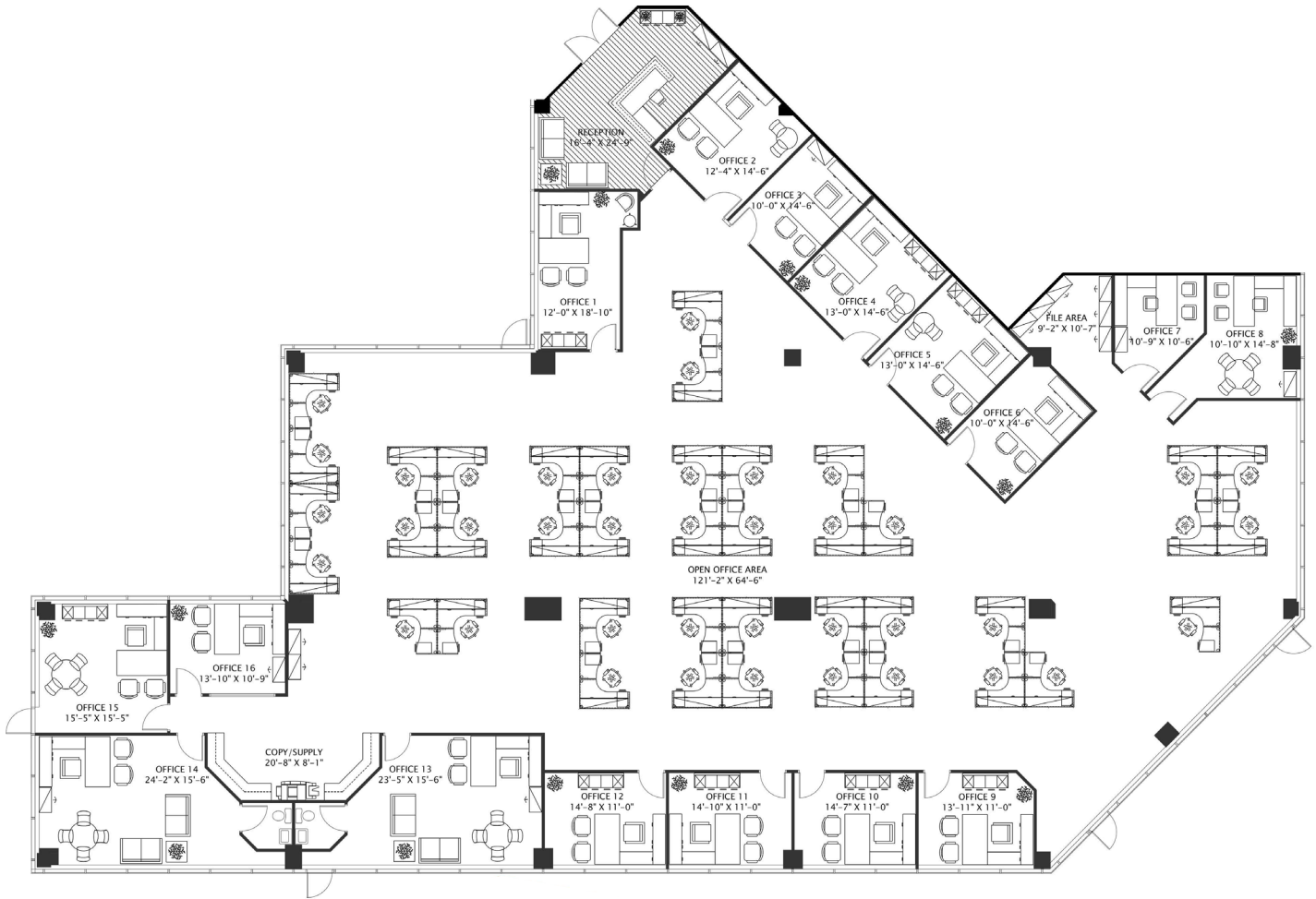




One Park Place

621 NW 53rd Street, Boca Raton FL 33487

SUITE 460 - 11,192 SF



FOR MORE INFORMATION, PLEASE CONTACT:

Brady Titcomb
Vice President
+ 1 954 653 3222
brady.titcomb@am.jll.com

Cameron Tallon
Vice President
+1 305 960 8407
cameron.tallon@am.jll.com

Eric Groffman
Executive Vice President
+1 305 347 5277
eric.groffman@am.jll.com



Scan to view
property video





One Park Place

621 NW 53rd Street, Boca Raton FL 33487

DONE/OLD/LEASED

FOR MORE INFORMATION, PLEASE CONTACT:

Brady Titcomb

Vice President
+ 1 954 653 3222

brady.titcomb@am.jll.com

Lic. Real Estate Brokers

Cameron Tallon

Vice President
+1 305 960 8407

cameron.tallon@am.jll.com

Eric Groffman

Executive Vice President
+1 305 347 5277

eric.groffman@am.jll.com



Scan to view
property video

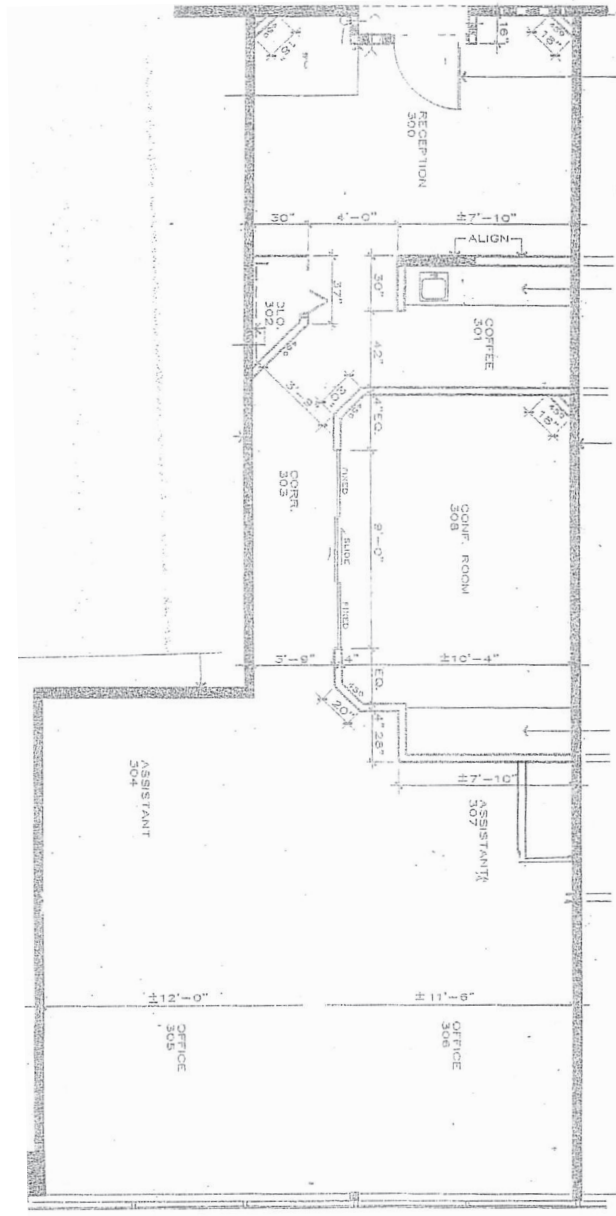




One Park Place

621 NW 53rd Street, Boca Raton FL 33487

SUITE 375 - 1,079 SF



FOR MORE INFORMATION, PLEASE CONTACT:

Brady Titcomb
Vice President
+ 1 954 653 3222
brady.titcomb@am.jll.com

Lic. Real Estate Brokers

Cameron Tallon
Vice President
+1 305 960 8407
cameron.tallon@am.jll.com

Eric Groffman
Executive Vice President
+1 305 347 5277
eric.groffman@am.jll.com



Scan to view
property video

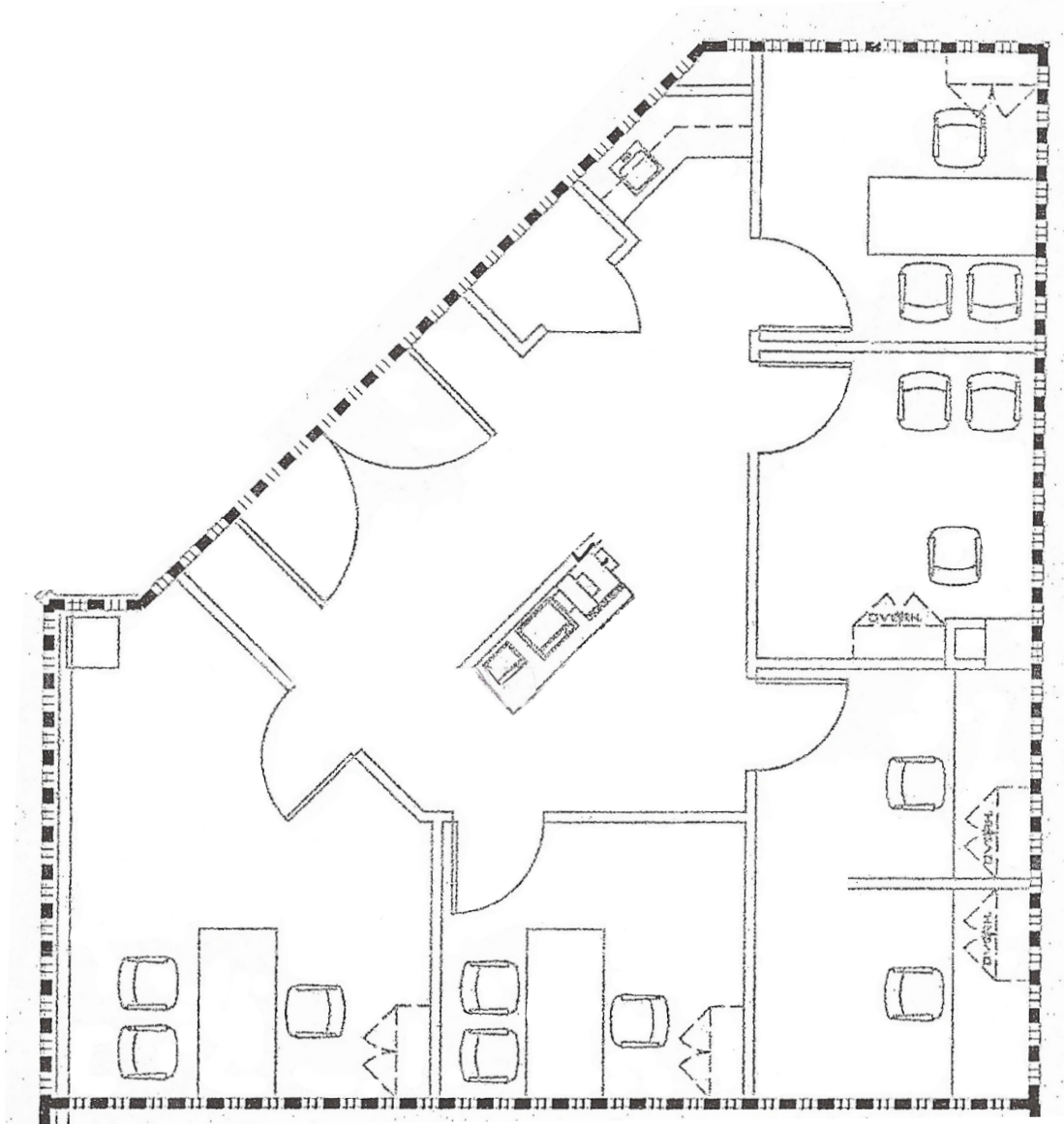




One Park Place

621 NW 53rd Street, Boca Raton FL 33487

SUITE 395 - 1,042 SF



FOR MORE INFORMATION, PLEASE CONTACT:

Brady Titcomb
Vice President
+ 1 954 653 3222
brady.titcomb@am.jll.com

Lic. Real Estate Brokers

Cameron Tallon
Vice President
+1 305 960 8407
cameron.tallon@am.jll.com

Eric Groffman
Executive Vice President
+1 305 347 5277
eric.groffman@am.jll.com



Scan to view
property video

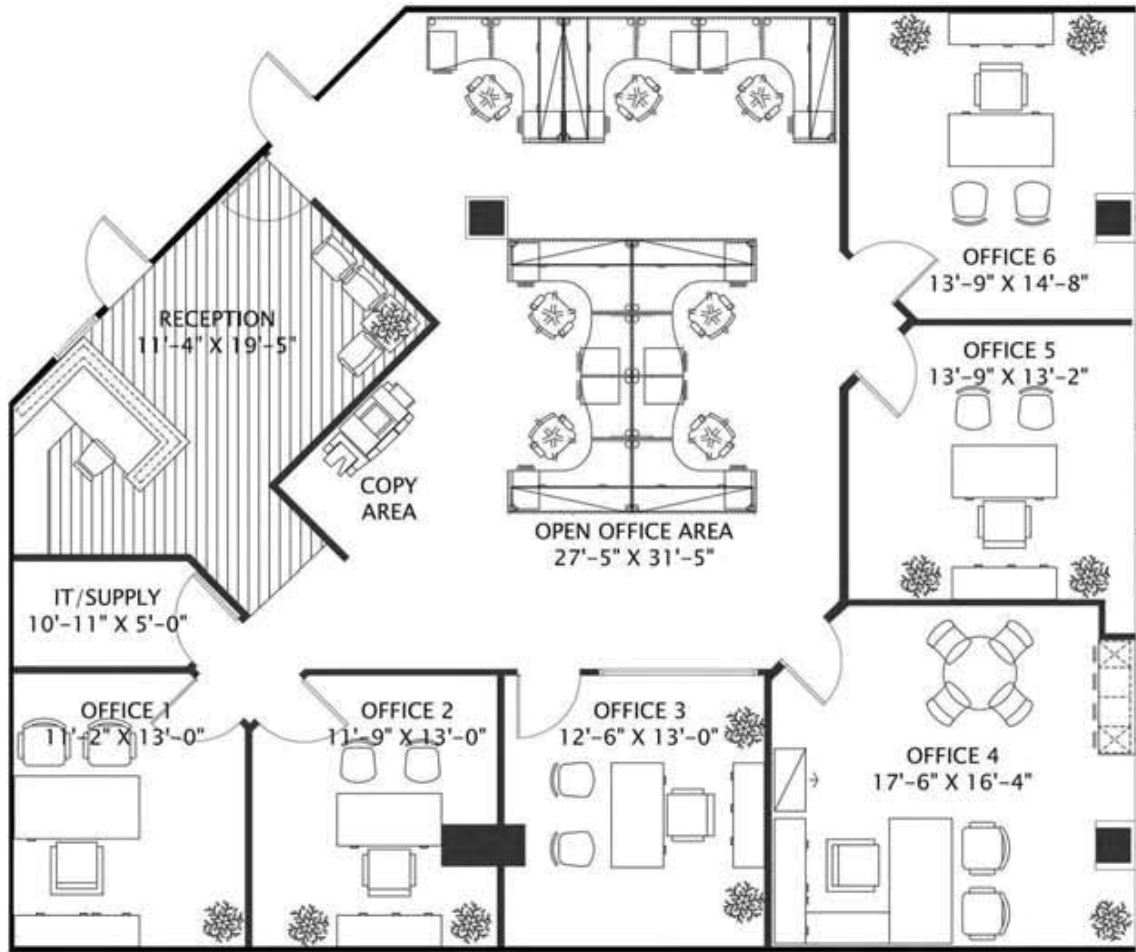




One Park Place

621 NW 53rd Street, Boca Raton FL 33487

SUITE 360 - 2,751 SF



FOR MORE INFORMATION, PLEASE CONTACT:

Brady Titcomb
Vice President
+ 1 954 653 3222
brady.titcomb@am.jll.com

Cameron Tallon
Vice President
+1 305 960 8407
cameron.tallon@am.jll.com

Eric Groffman
Executive Vice President
+1 305 347 5277
eric.groffman@am.jll.com



Scan to view
property video

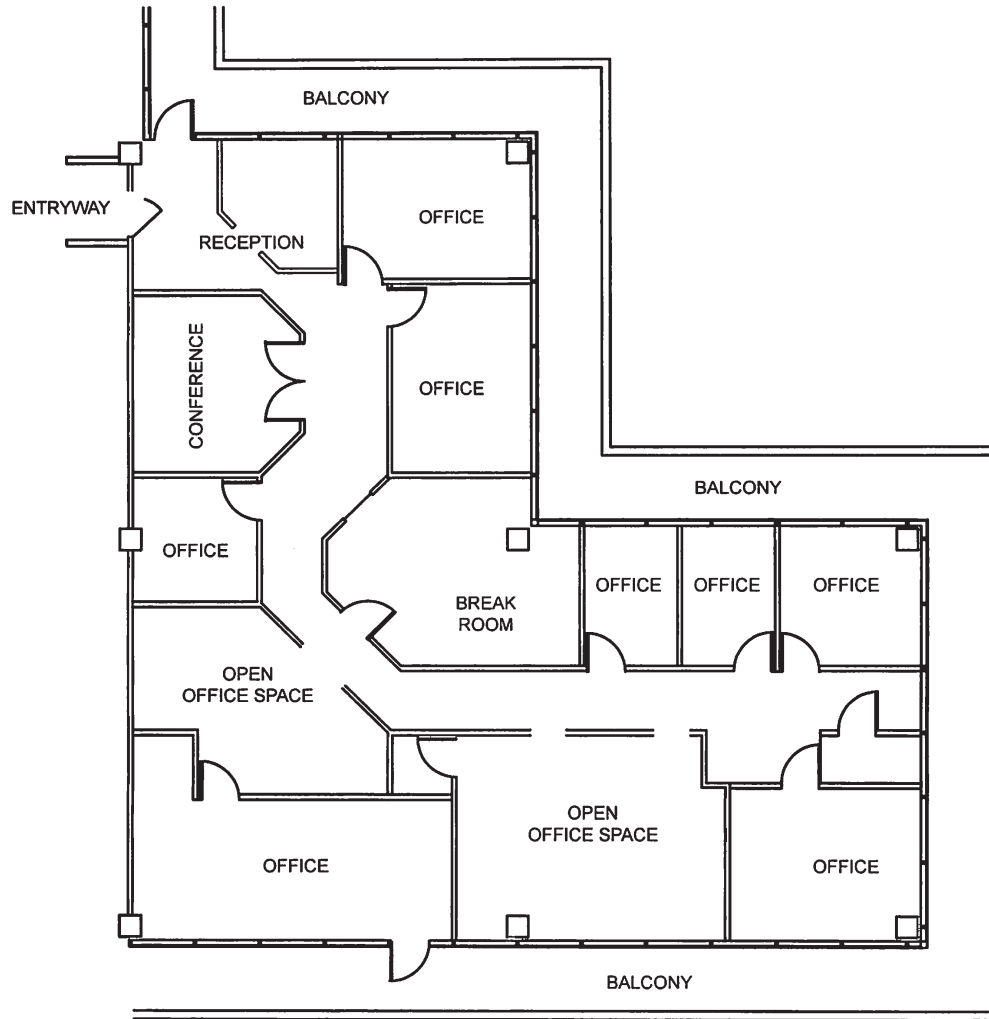




One Park Place

621 NW 53rd Street, Boca Raton FL 33487

SUITE 310 - 3,395 SF



FOR MORE INFORMATION, PLEASE CONTACT:

Brady Titcomb
Vice President
+ 1 954 653 3222
brady.titcomb@am.jll.com

Lic. Real Estate Brokers

Cameron Tallon
Vice President
+1 305 960 8407
cameron.tallon@am.jll.com

Eric Groffman
Executive Vice President
+1 305 347 5277
eric.groffman@am.jll.com



Scan to view
property video

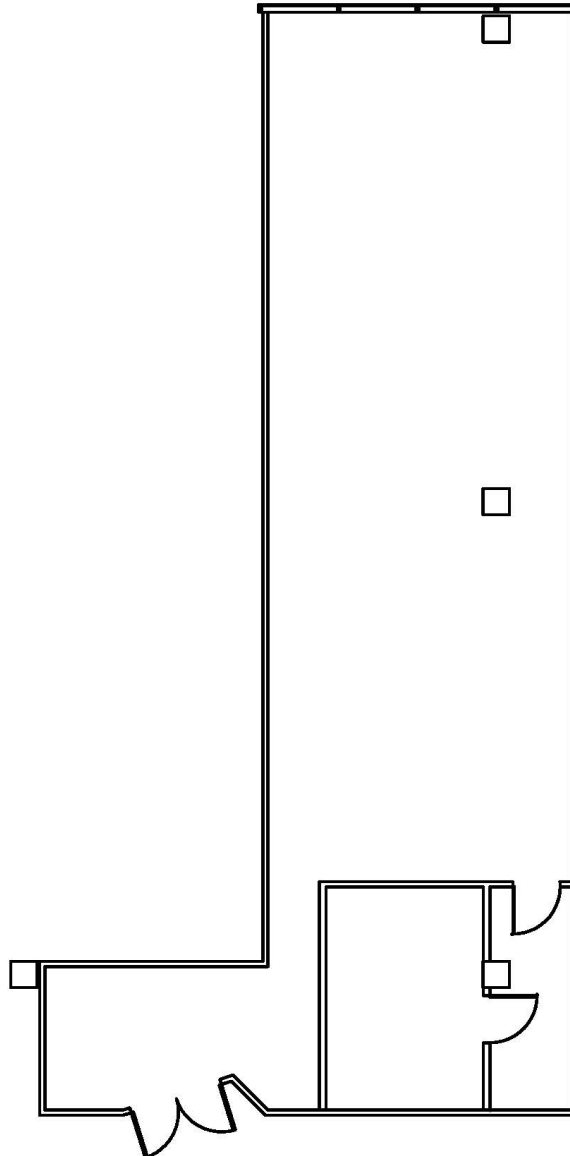




One Park Place

621 NW 53rd Street, Boca Raton FL 33487

SUITE 265 - 1,686 SF



FOR MORE INFORMATION, PLEASE CONTACT:

Brady Titcomb
Vice President
+ 1 954 653 3222
brady.titcomb@am.jll.com

Lic. Real Estate Brokers

Cameron Tallon
Vice President
+1 305 960 8407
cameron.tallon@am.jll.com

Eric Groffman
Executive Vice President
+1 305 347 5277
eric.groffman@am.jll.com



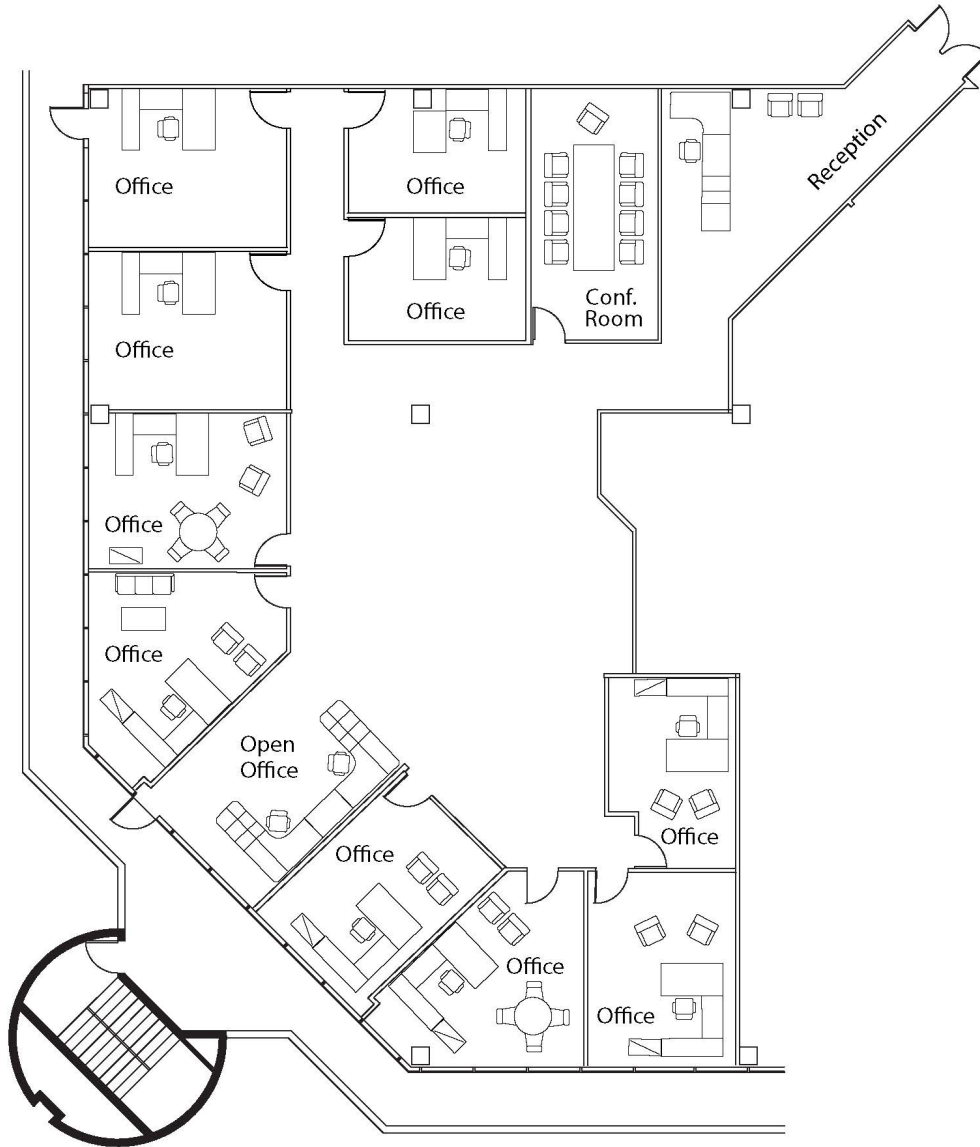
Scan to view
property video



One Park Place

621 NW 53rd Street, Boca Raton FL 33487

SUITE 210 - 5,921 SF



FOR MORE INFORMATION, PLEASE CONTACT:

Brady Titcomb
Vice President
+ 1 954 653 3222
brady.titcomb@am.jll.com

Lic. Real Estate Brokers

Cameron Tallon
Vice President
+1 305 960 8407
cameron.tallon@am.jll.com

Eric Groffman
Executive Vice President
+1 305 347 5277
eric.groffman@am.jll.com



Scan to view
property video

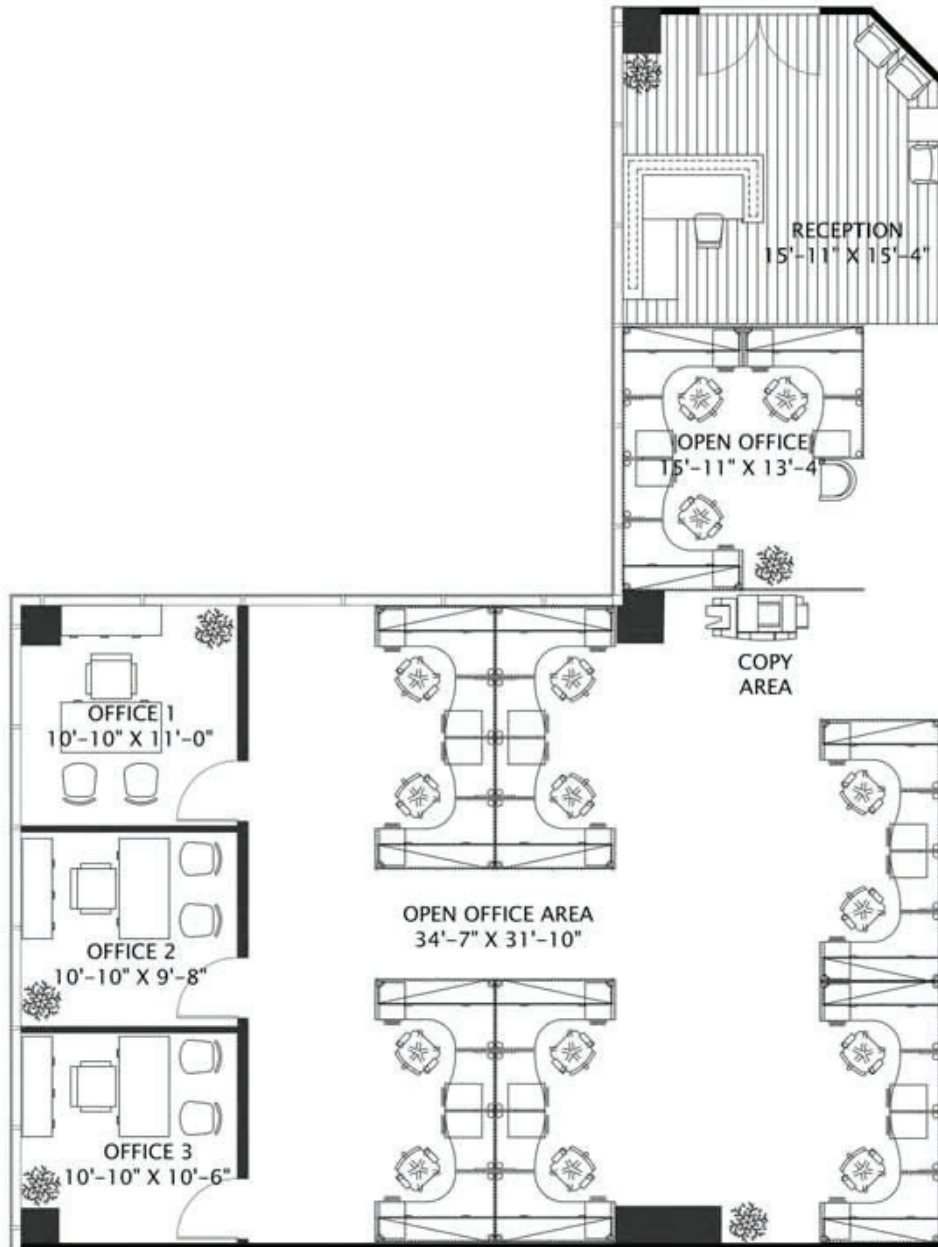




One Park Place

621 NW 53rd Street, Boca Raton FL 33487

SUITE 250 - 2,237 SF



FOR MORE INFORMATION, PLEASE CONTACT:

Brady Titcomb
Vice President
+ 1 954 653 3222
brady.titcomb@am.jll.com

Cameron Tallon
Vice President
+1 305 960 8407
cameron.tallon@am.jll.com

Eric Groffman
Executive Vice President
+1 305 347 5277
eric.groffman@am.jll.com



Scan to view
property video

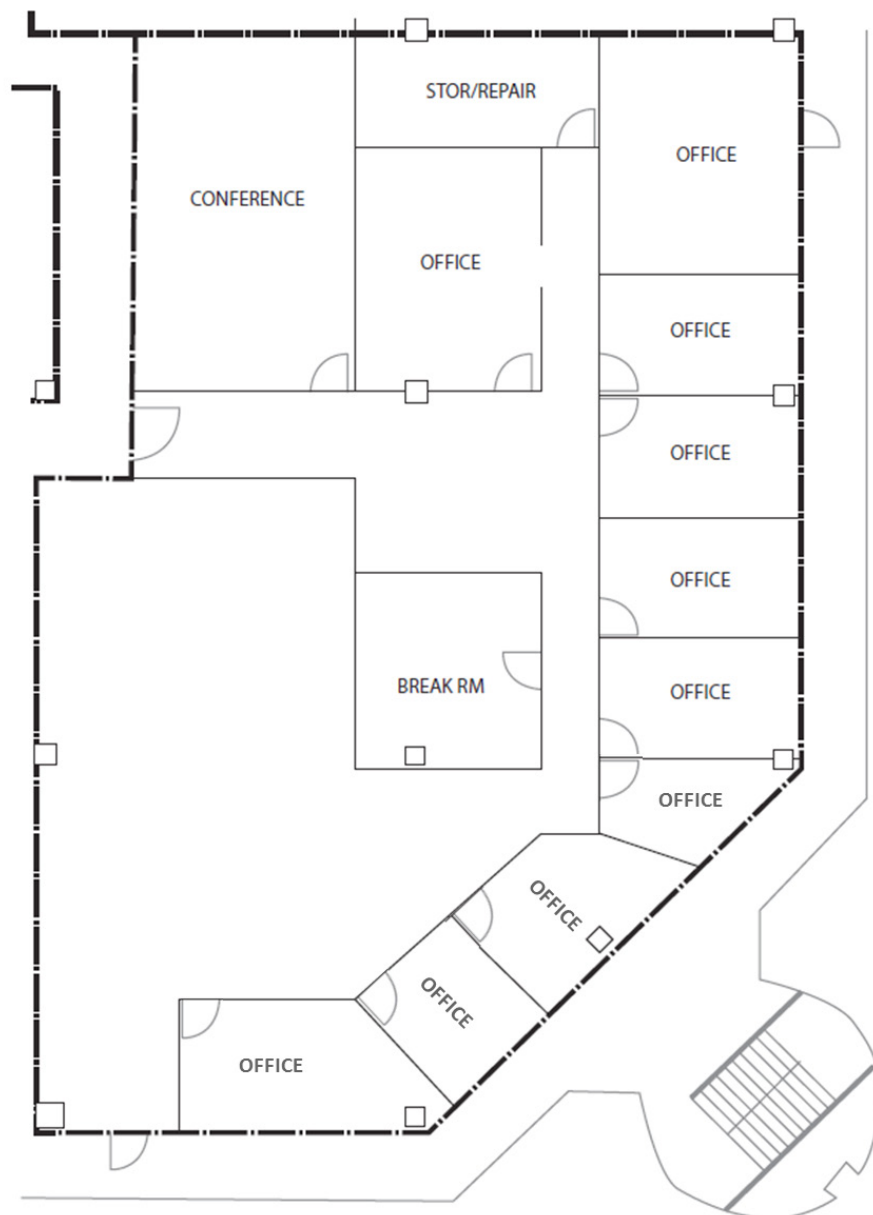




One Park Place

621 NW 53rd Street, Boca Raton FL 33487

SUITE 315 - 5,690SF



FOR MORE INFORMATION, PLEASE CONTACT:

Brady Titcomb
Vice President
+ 1 954 653 3222
brady.titcomb@am.jll.com

Cameron Tallon
Vice President
+1 305 960 8407
cameron.tallon@am.jll.com

Eric Groffman
Executive Vice President
+1 305 347 5277
eric.groffman@am.jll.com



Scan to view
property video

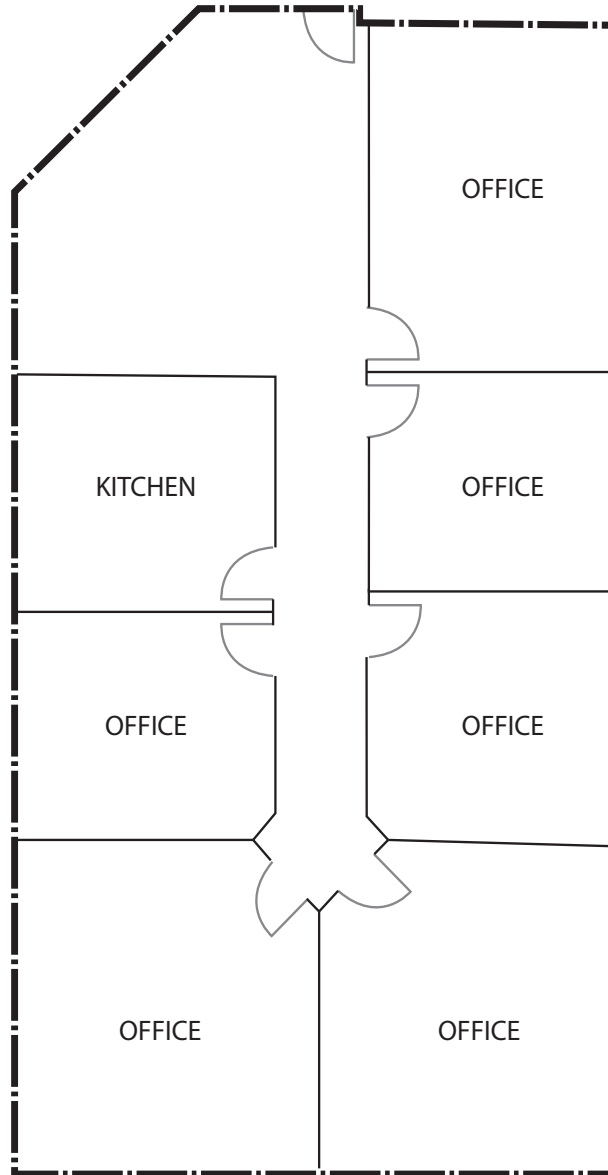




One Park Place

621 NW 53rd Street, Boca Raton FL 33487

SUITE 330 - 1,818 SF



FOR MORE INFORMATION, PLEASE CONTACT:

Brady Titcomb
Vice President
+ 1 954 653 3222
brady.titcomb@am.jll.com

Lic. Real Estate Brokers

Cameron Tallon
Vice President
+1 305 960 8407
cameron.tallon@am.jll.com

Eric Groffman
Executive Vice President
+1 305 347 5277
eric.groffman@am.jll.com



Scan to view
property video

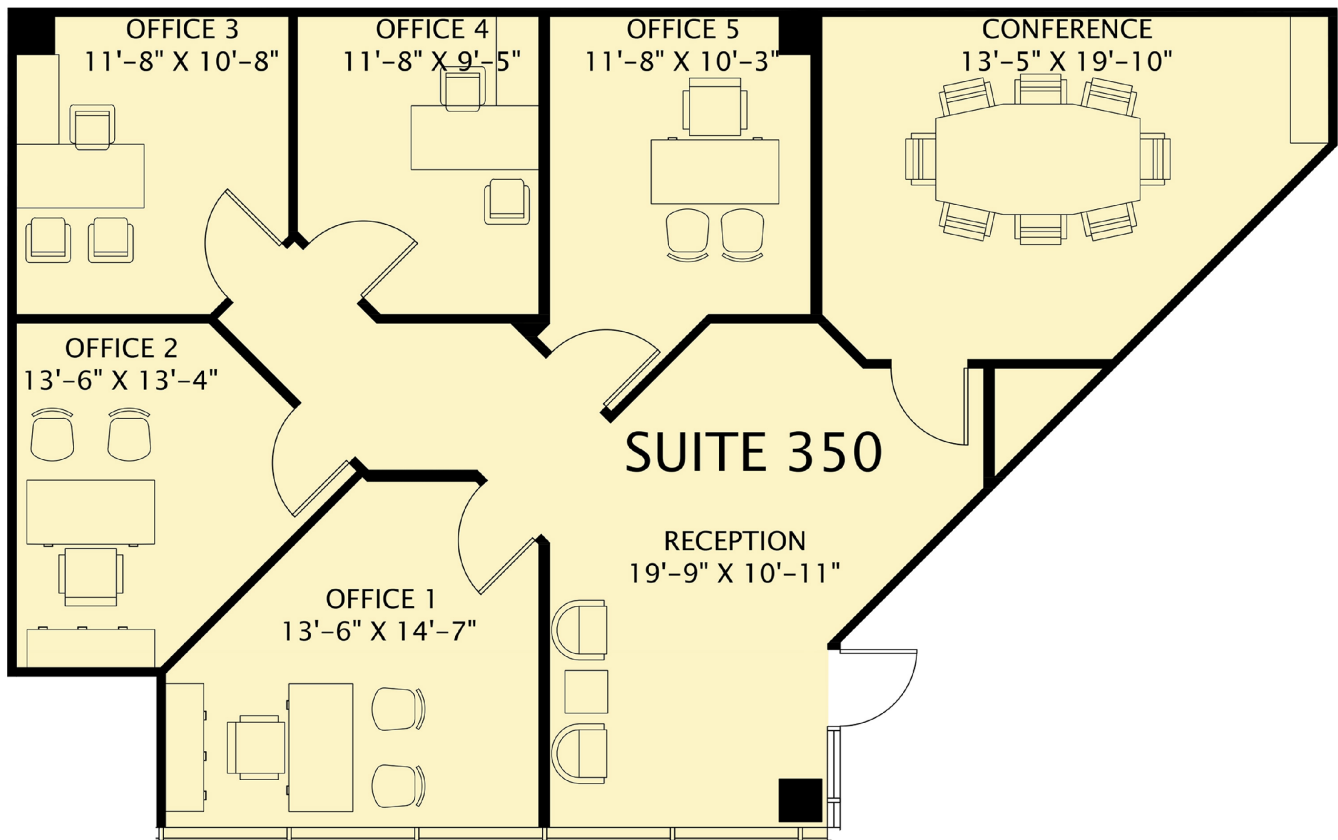




One Park Place

621 NW 53rd Street, Boca Raton FL 33487

SUITE 350 - 1,590 SF



FOR MORE INFORMATION, PLEASE CONTACT:

Brady Titcomb
Vice President
+ 1 954 653 3222
brady.titcomb@am.jll.com

Cameron Tallon
Vice President
+1 305 960 8407
cameron.tallon@am.jll.com

Eric Groffman
Executive Vice President
+1 305 347 5277
eric.groffman@am.jll.com



Scan to view
property video

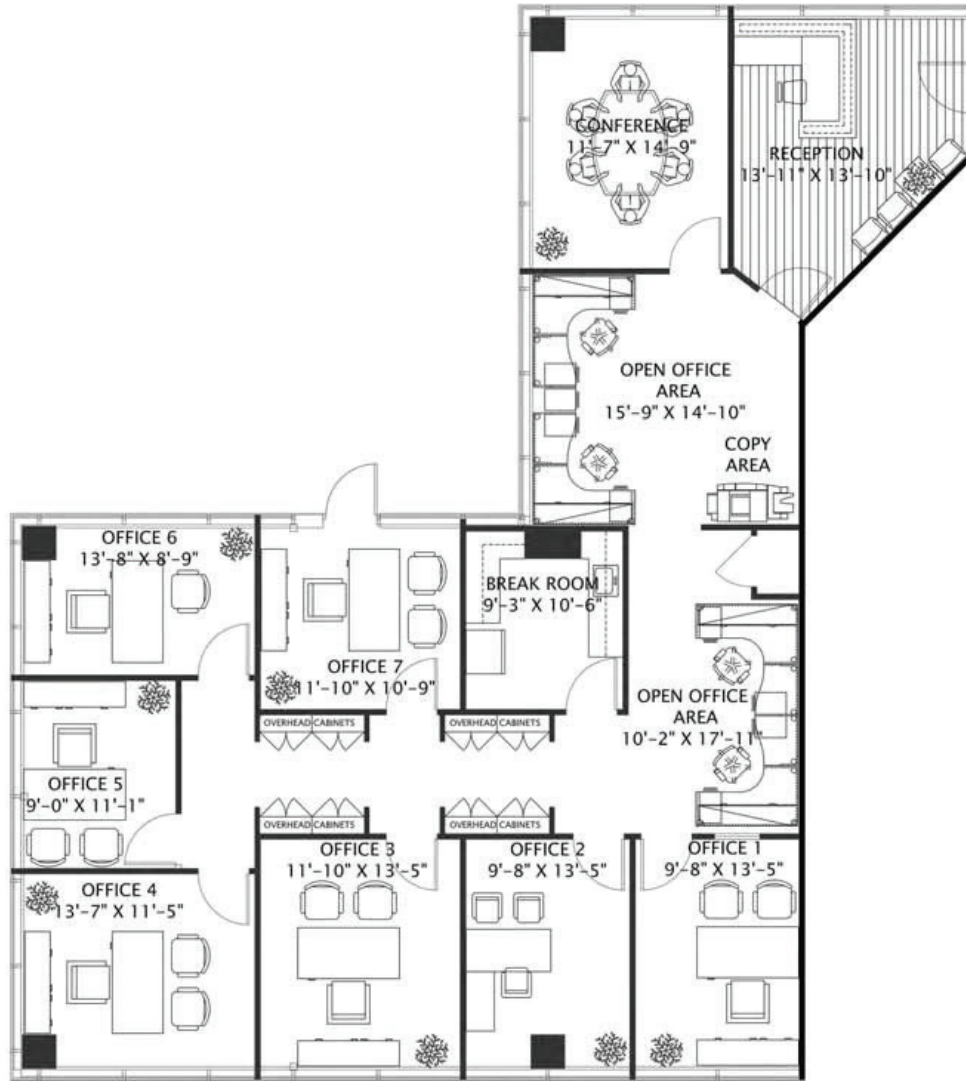




One Park Place

621 NW 53rd Street, Boca Raton FL 33487

SUITE 390 - 2,475 SF



FOR MORE INFORMATION, PLEASE CONTACT:

Brady Titcomb
Vice President
+ 1 954 653 3222
brady.titcomb@am.jll.com

Cameron Tallon
Vice President
+1 305 960 8407
cameron.tallon@am.jll.com

Eric Groffman
Executive Vice President
+1 305 347 5277
eric.groffman@am.jll.com



Scan to view
property video



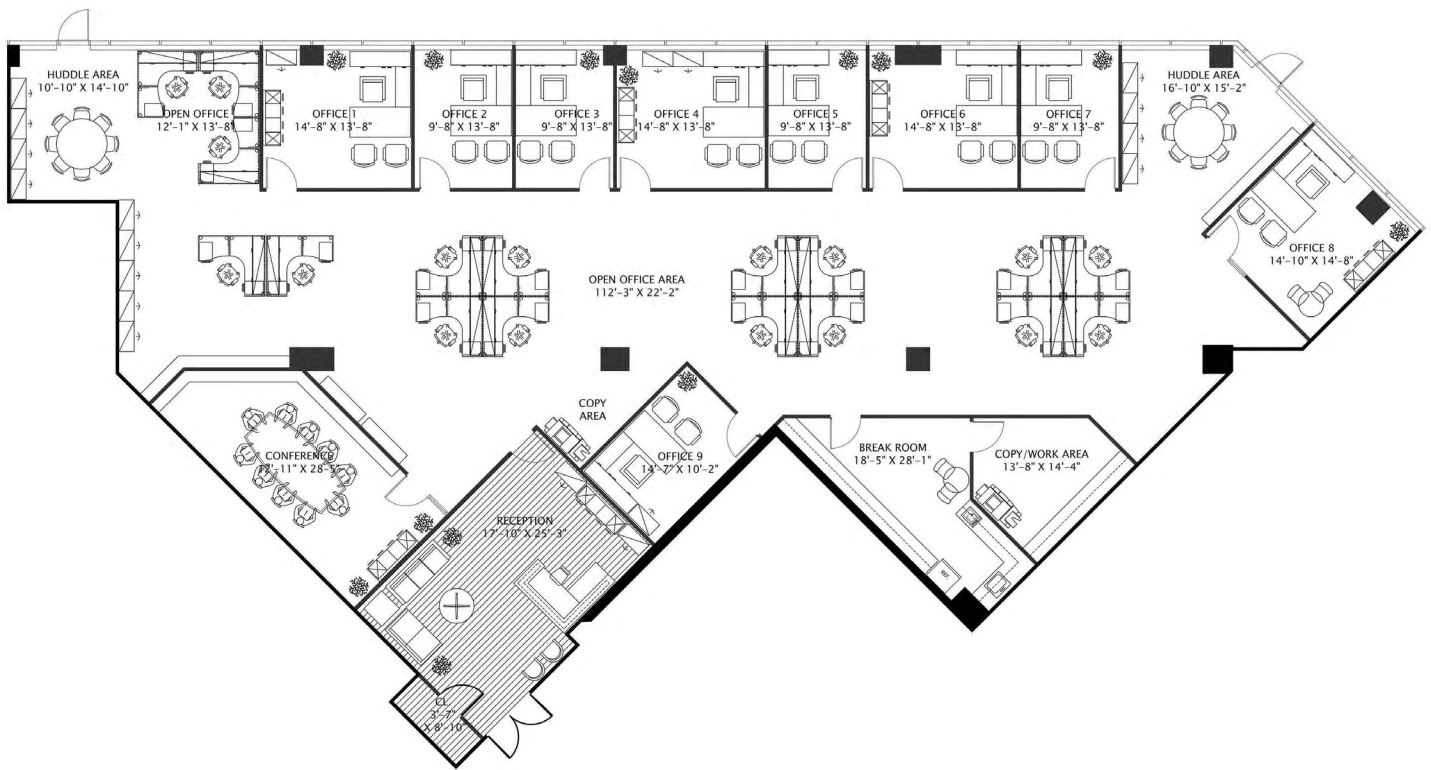
Lic. Real Estate Brokers



One Park Place

621 NW 53rd Street, Boca Raton FL 33487

SUITE 410 - 6,164 SF



FOR MORE INFORMATION, PLEASE CONTACT:

Brady Titcomb
Vice President
+ 1 954 653 3222
brady.titcomb@am.jll.com

Cameron Tallon
Vice President
+1 305 960 8407
cameron.tallon@am.jll.com

Eric Groffman
Executive Vice President
+1 305 347 5277
eric.groffman@am.jll.com



Scan to view
property video

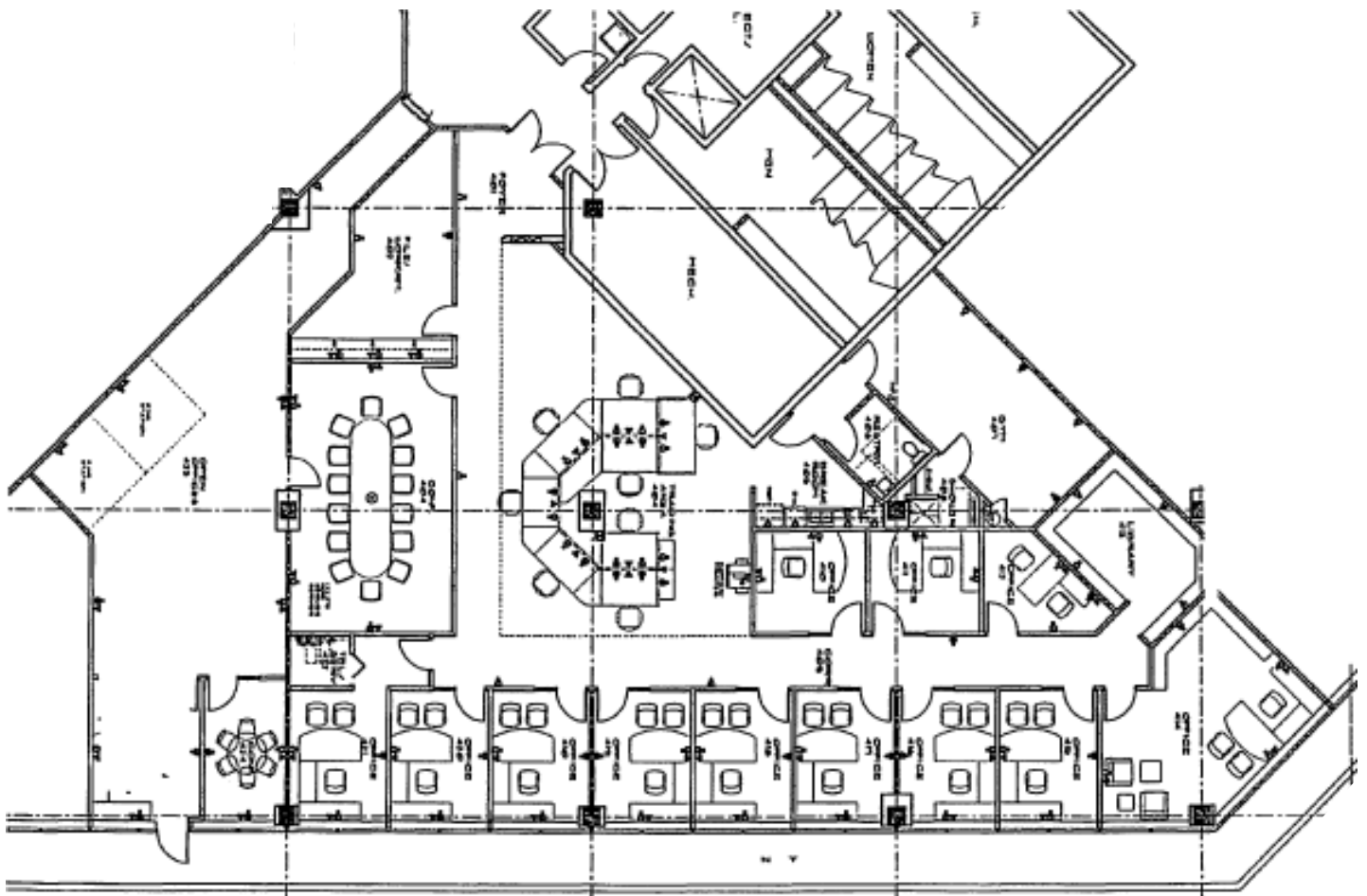




One Park Place

621 NW 53rd Street, Boca Raton FL 33487

SUITE 450 - 6,837 SF



FOR MORE INFORMATION, PLEASE CONTACT:

Brady Titcomb
Vice President
+ 1 954 653 3222
brady.titcomb@am.jll.com

Cameron Tallon
Vice President
+1 305 960 8407
cameron.tallon@am.jll.com

Eric Groffman
Executive Vice President
+1 305 347 5277
eric.groffman@am.jll.com



Scan to view
property video

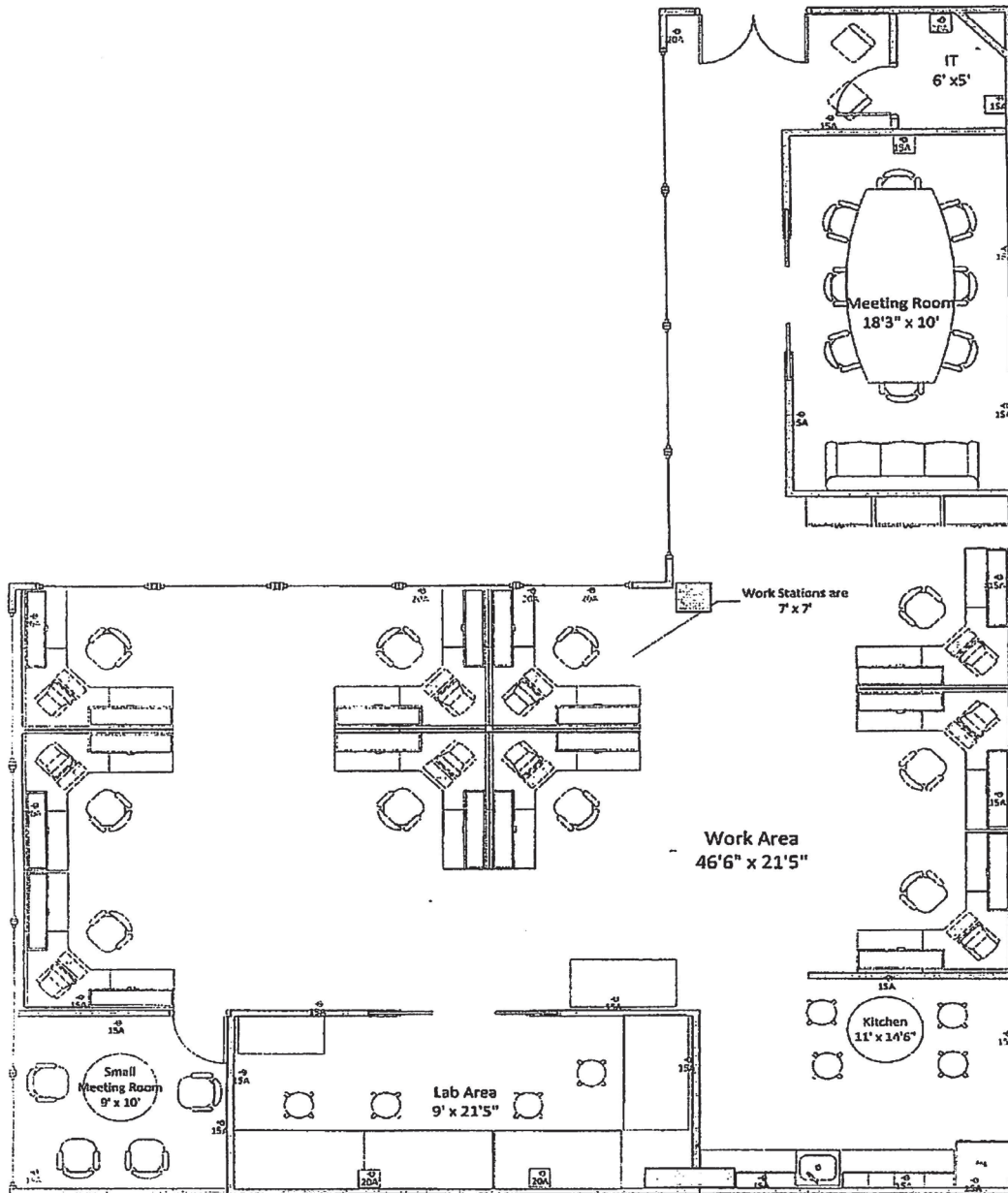




One Park Place

621 NW 53rd Street, Boca Raton FL 33487

SUITE 250 - 2,237 SF



FOR MORE INFORMATION, PLEASE CONTACT:

Brady Titcomb
Vice President
+ 1 954 653 3222
brady.titcomb@am.jll.com

Cameron Tallon
Vice President
+1 305 960 8407
cameron.tallon@am.jll.com

Eric Groffman
Executive Vice President
+1 305 347 5277
eric.groffman@am.jll.com



Scan to view
property video



Lic. Real Estate Brokers