

2014 RICHFIELD ROAD
FLINT, MICHIGAN

RETAIL FOR SALE OR LEASE
4,159 Square Feet Available



**SIGNATURE
ASSOCIATES**
KNOW SIGNATURE | KNOW RESULTS



PROPERTY FEATURES

- 4,159 square feet available
- (8) 10' x 8' grade level doors
- Excellent collision shop
- Brand new "Garmat 3000" double downdraft paint booth (2024)
- Rotary compressor with backup
- Dealership license approved
- Lease Rate: \$14.42/sq. ft. Gross
- Sale Price: \$489,000 (\$117.58/sq. ft.)



For more information, please contact:

JOE STACK
(248) 359 0615
jstack@signatureassociates.com

CHRIS MONSOUR
(248) 948 0107
cmonsour@signatureassociates.com

SIGNATURE ASSOCIATES
One Towne Square, Suite 1200
Southfield, MI 48076
www.signatureassociates.com

2014 Richfield Road – Flint, Michigan

Retail For Sale or Lease

4,159
Square Feet
AVAILABLE



For more information, please contact:

JOE STACK
(248) 359 0615
jstack@signatureassociates.com

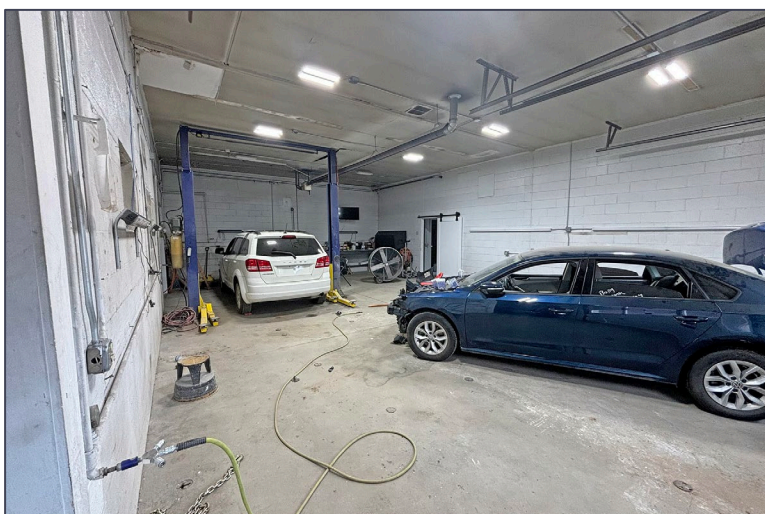
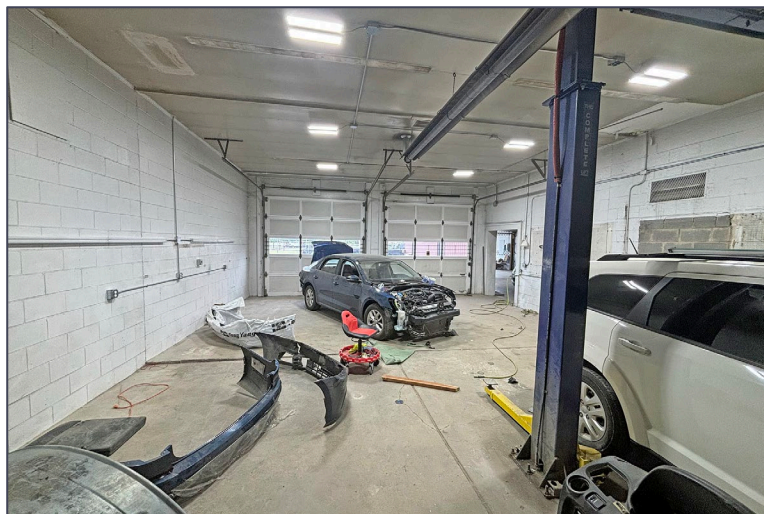
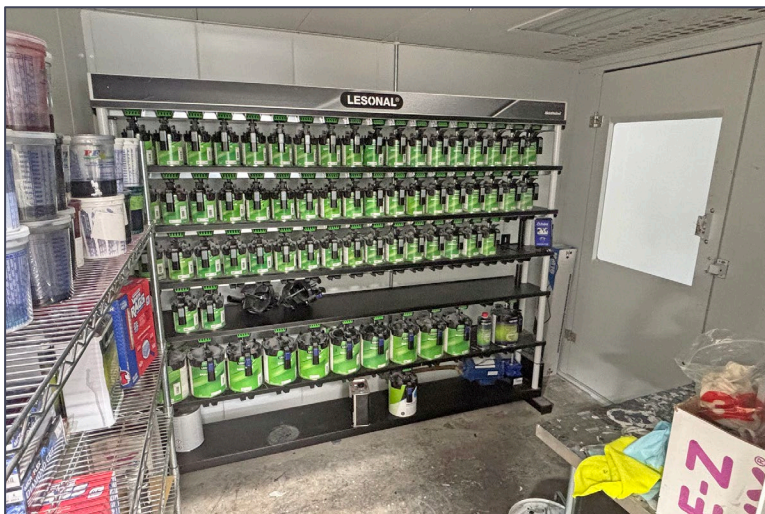
CHRIS MONSOUR
(248) 948 0107
cmonsour@signatureassociates.com

SIGNATURE ASSOCIATES
One Towne Square, Suite 1200
Southfield, MI 48076
www.signatureassociates.com

2014 Richfield Road – Flint, Michigan

Retail For Sale or Lease

4,159
Square Feet
AVAILABLE



For more information, please contact:

JOE STACK
(248) 359 0615
jstack@signatureassociates.com

CHRIS MONSOUR
(248) 948 0107
cmonsour@signatureassociates.com

SIGNATURE ASSOCIATES
One Towne Square, Suite 1200
Southfield, MI 48076
www.signatureassociates.com

2014 Richfield Road – Flint, Michigan

Retail For Sale or Lease

4,159
Square Feet
AVAILABLE

Site Plan



For more information, please contact:

JOE STACK
(248) 359 0615
jstack@signatureassociates.com

CHRIS MONSOUR
(248) 948 0107
cmonsour@signatureassociates.com

SIGNATURE ASSOCIATES
One Towne Square, Suite 1200
Southfield, MI 48076
www.signatureassociates.com

2014 Richfield Road – Flint, Michigan

Retail For Sale or Lease

4,159
Square Feet
AVAILABLE

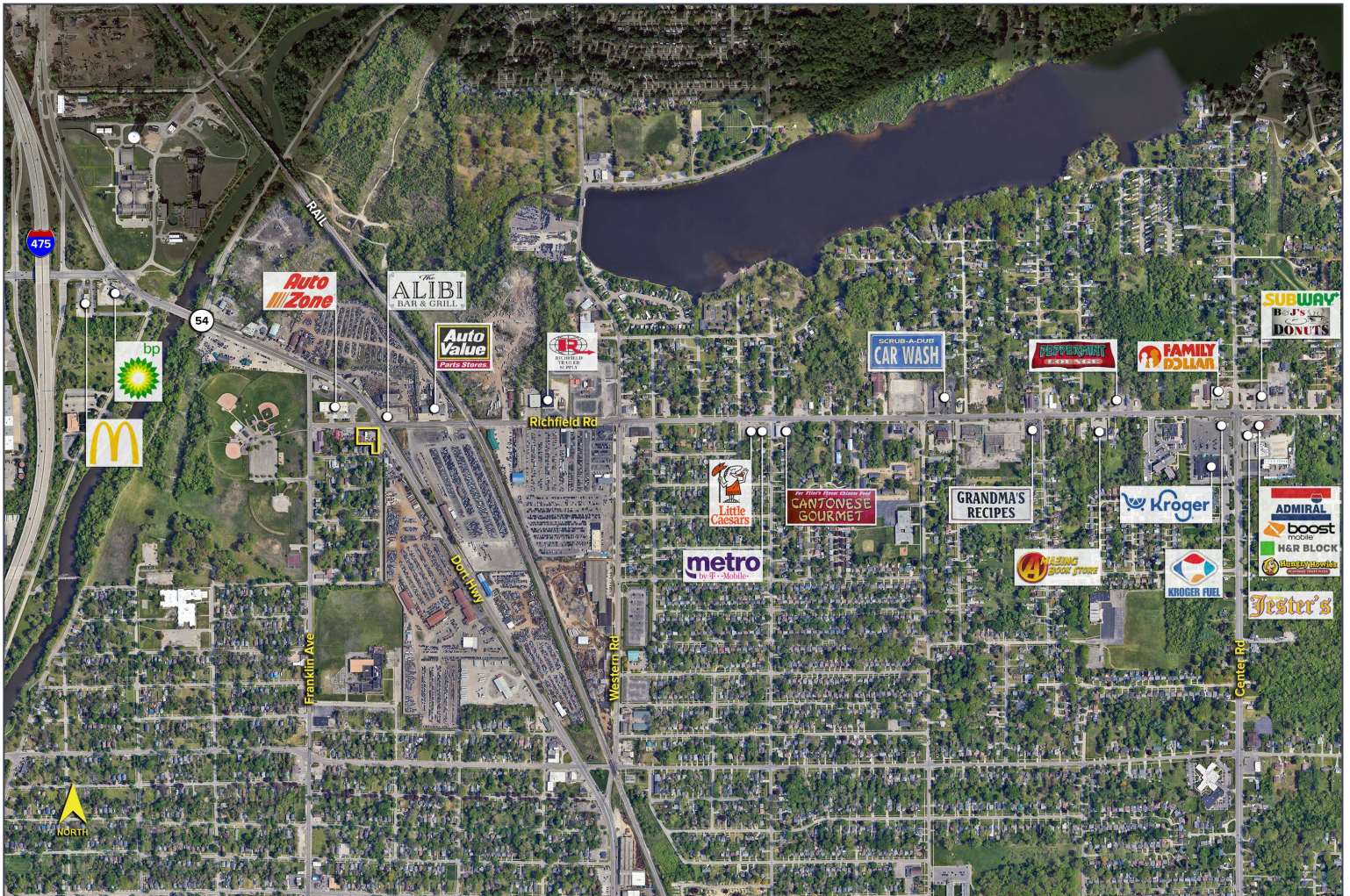


DEMOGRAPHICS

	POPULATION	MED. HH INCOME
1 MILE	5,623	\$30,826
3 MILE	49,875	\$36,477
5 MILE	133,272	\$40,624

TRAFFIC COUNTS (TWO-WAY)

11,014	Richfield Rd. E of Dort Hwy.
2,389	Richfield Rd. W of Dort Hwy.
24,340	Dort Hwy. N of Richfield Rd.
16,230	Dort Hwy. S of Richfield Rd.



For more information, please contact:

JOE STACK
(248) 359 0615
jstack@signatureassociates.com

CHRIS MONSOUR
(248) 948 0107
cmonsour@signatureassociates.com

SIGNATURE ASSOCIATES
One Towne Square, Suite 1200
Southfield, MI 48076
www.signatureassociates.com