



MARK BOTTLES
REAL ESTATE SERVICES

Eagle Retail Space for Sub Lease 600 S Rivershore Ln, Ste 170

Eagle, Idaho 83616



PROPERTY INFORMATION:

Location: SWC of Eagle Rd and State (Hwy 44)

Available Space: ± 2,768 SF

Zoning: City of Eagle C-1

Lease Rate: \$15.42/SF NNN

COMMENTS:

- High Traffic area with good access
- Quaint patio/courtyard area adjacent to space
- All tables, booths, passline, heat lamps, fryers, and freezer included if needed for new user
- Lease rate annual increases of 2.5% (May)
- Use of beautiful outside patio tables and chairs

RON BRODIEN

Cell: (208) 800-9252
Office: (208) 947-1084
rbrodien@markbottles.com

839 S. Bridgeway Place
Eagle, Idaho
P(208) 377-5700 F(208) 377-0035
www.markbottles.com

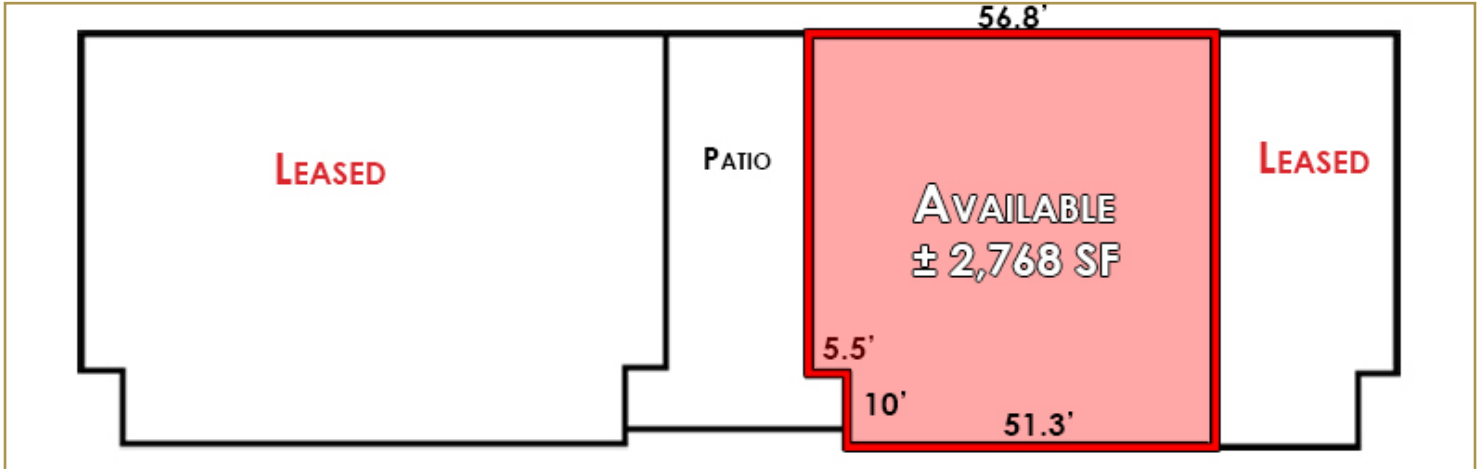


MARK BOTTLES
REAL ESTATE SERVICES

Eagle Retail Space for Sub Lease 600 S Rivershore Ln, Ste 170

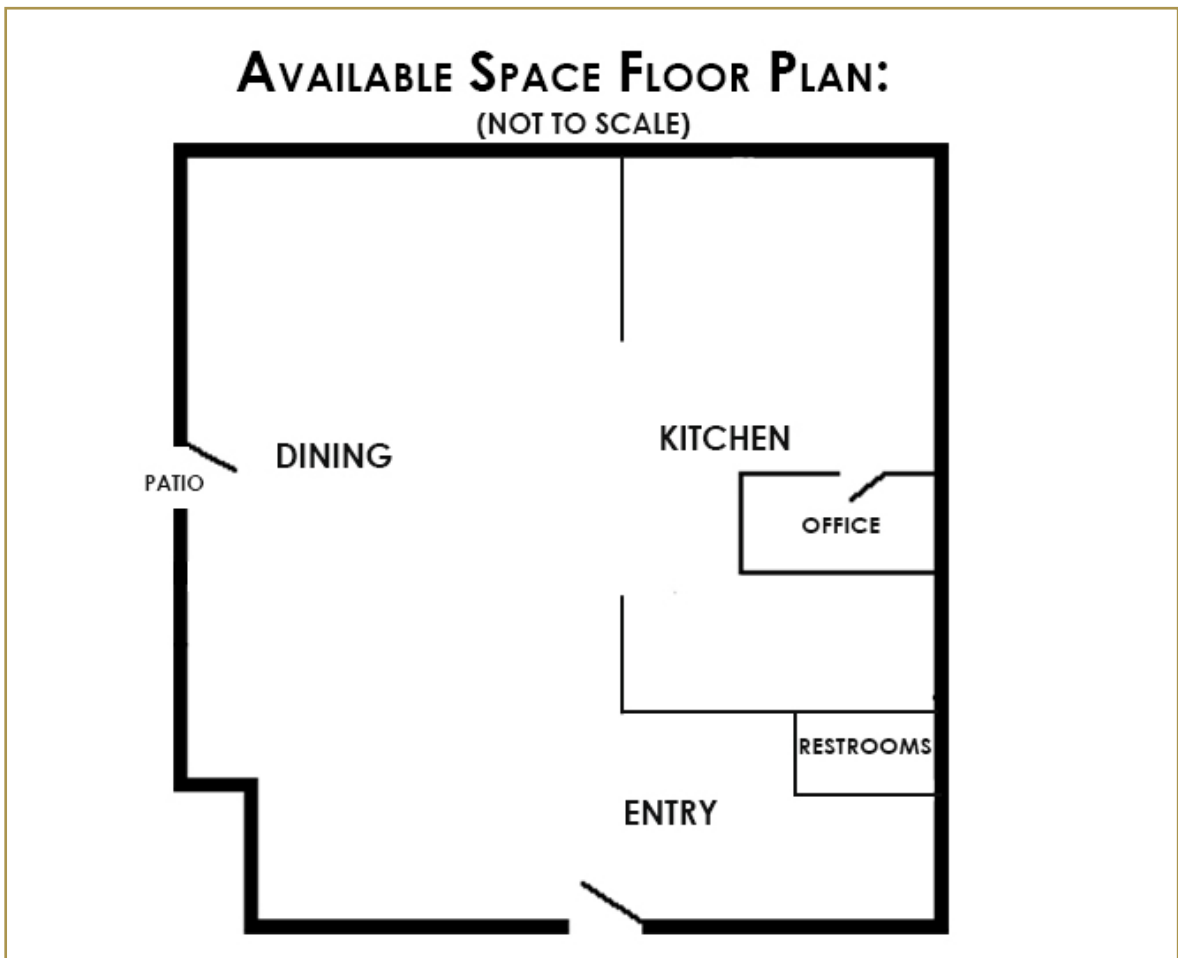
Eagle, Idaho 83616

Floor Plan:



AVAILABLE SPACE FLOOR PLAN:

(NOT TO SCALE)



RON BRODIEN

Cell: (208) 800-9252
Office: (208) 947-1084
rbrodien@markbottles.com

839 S. Bridgeway Place
Eagle, Idaho
P(208) 377-5700 F(208) 377-0035
www.markbottles.com

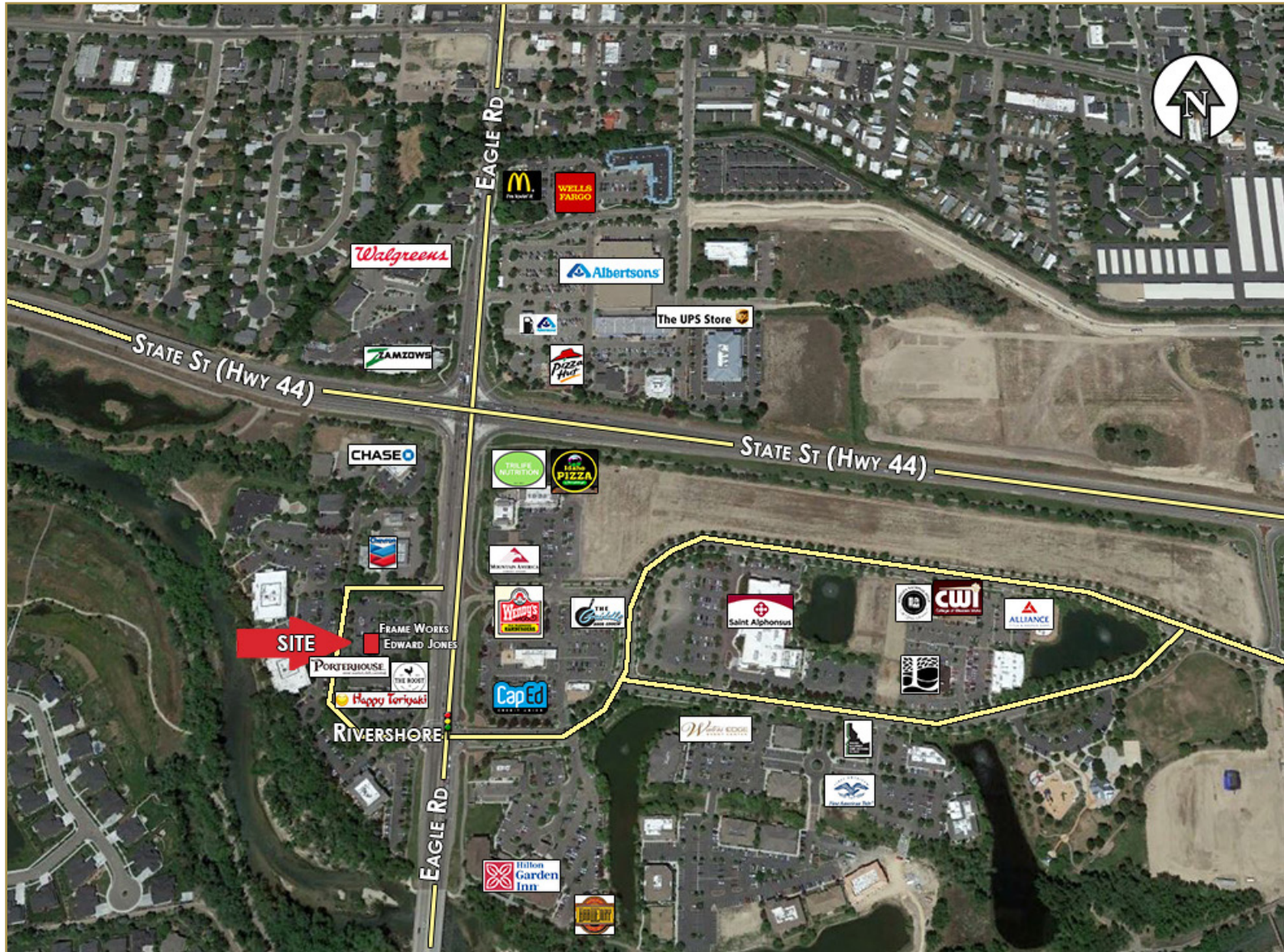


MARK BOTTLES
REAL ESTATE SERVICES

Eagle Retail Space for Sub Lease 600 S Rivershore Ln, Ste 170

Eagle, Idaho 83616

Aerial:



RON BRODIEN

Cell: (208) 800-9252

Office: (208) 947-1084

rbrodien@markbottles.com

839 S. Bridgeway Place

Eagle, Idaho

P(208) 377-5700 F(208) 377-0035

www.markbottles.com

This information, while not guaranteed, is from sources we believe to be reliable. This data is subject to price change, corrections, errors, omissions, prior sale, and/or withdrawal.



MARK BOTTLES
REAL ESTATE SERVICES

Eagle Retail Space for Sub Lease 600 S Rivershore Ln, Ste 170

Eagle, Idaho 83616

Photos:



RON BRODIEN

Cell: (208) 800-9252
Office: (208) 947-1084
rbrodien@markbottles.com

839 S. Bridgeway Place
Eagle, Idaho
P(208) 377-5700 F(208) 377-0035
www.markbottles.com

This information, while not guaranteed, is from sources we believe to be reliable. This data is subject to price change, corrections, errors, omissions, prior sale, and/or withdrawal.