

No 3
Robert
St.

WC2

Where Mayfair style
meets Covent Garden.



Overview

Dating from 1768–1774 and designed by the architect Robert Adam, 3 Robert Street is a stunning example of a refurbished period property for today's discerning occupiers.

With the design details of those expected in a prime Mayfair building, it offers 9,911 sq ft of truly exceptional space in a Covent Garden location.

1. Ground floor reception
2. 1st floor office
3. 1st floor ceiling detail
4. Exterior entrance lantern





2



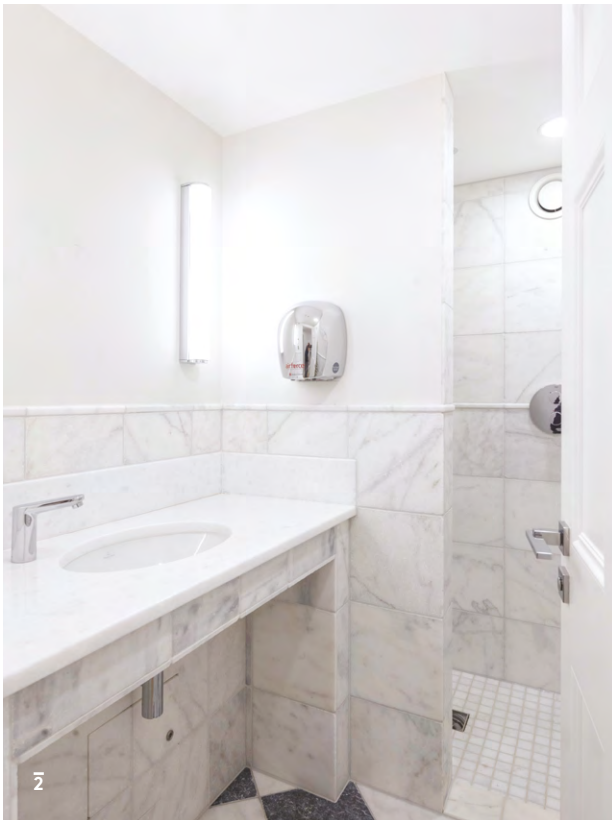
3



4



1



2



3

Specification

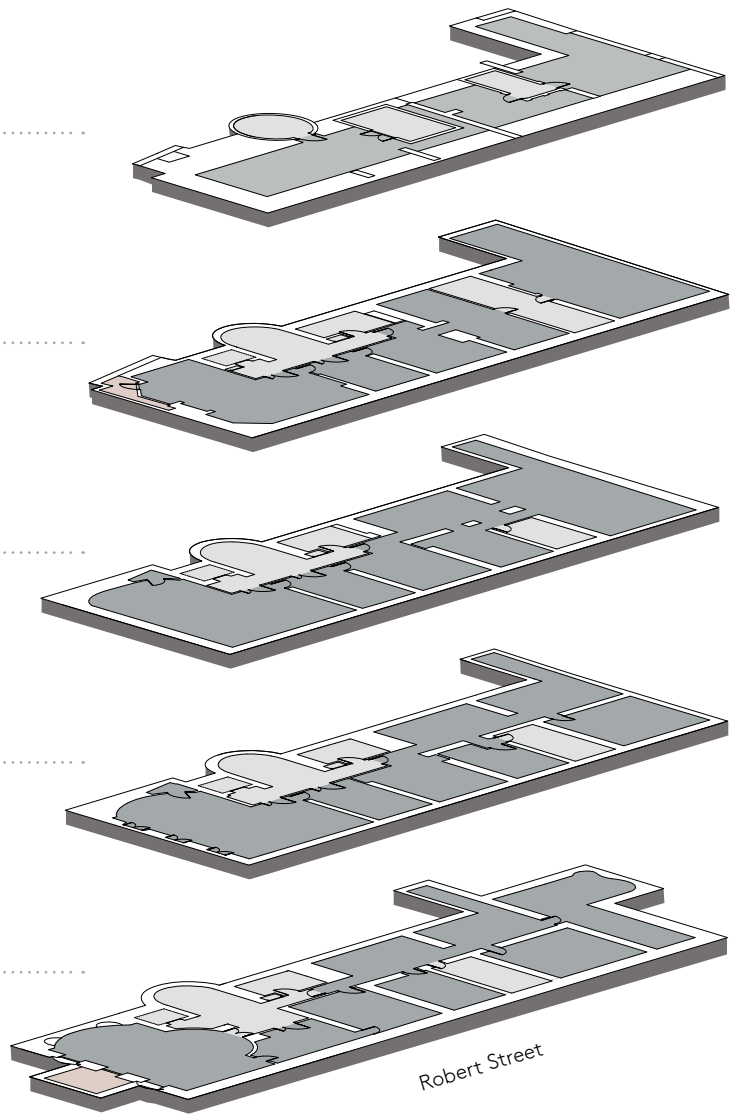
- Newly refurbished and restored.
 - Roof terraces with views over the River Thames.
 - New VRF air conditioning.
 - New DALI controllable LED lighting.
 - Passenger lift.
 - New oak wood flooring with fully cabled floor boxes.
 - Tea point / breakout areas on each floor.
 - Excellent floor to ceiling height.
 - Period features.
 - Commissionaire.
 - Comms rack on each floor.
 - Fibre optic connectivity.
 - Showers.
-



1. 1st floor office
2. Shower room
3. Restored staircase
4. Client entertaining facilities – roof level
5. Roof terrace

Accommodation Schedule

Floor	Sq Ft	Sq M
Roof Terraces	-	-
4th	2,224	207
3rd	2,563	238
2nd	2,365	220
1st	2,759	256
Total	9,911	921



For indicative purposes only. Not to scale.

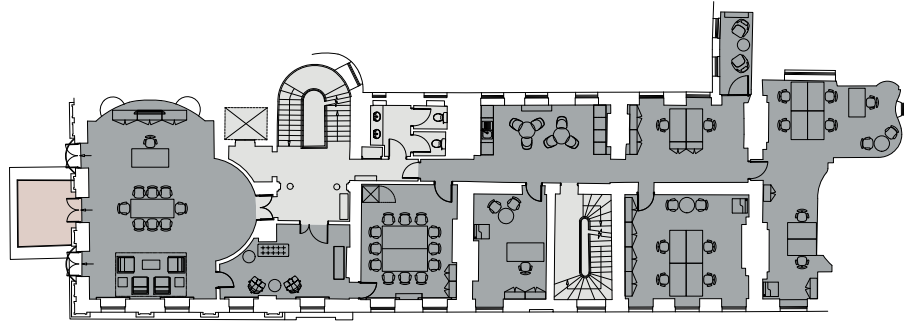
Space Plans

1st Floor Indicative Fit-out

2,759 sq ft / 256 sq m

Open plan desks	13
1 person office	1
Chairman office	1
12 person meeting room	1
Phone booth	1
Waiting area	1
Tea point / breakout area	1

Total occupancy **15**



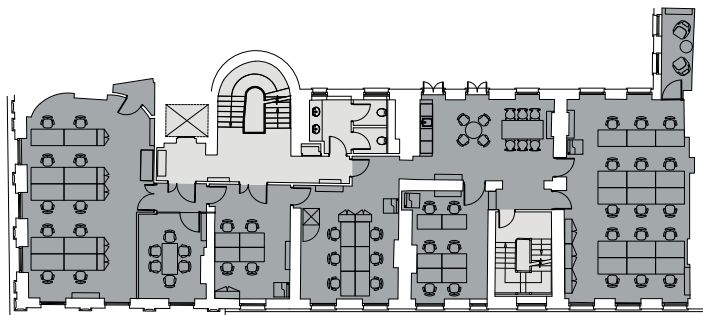
Robert Street

3rd Floor Indicative Fit-out

2,563 sq ft / 238 sq m

Open plan desks	41
6 person meeting room	1
Phone booth	1
Tea point / breakout area	1

Total occupancy **41**



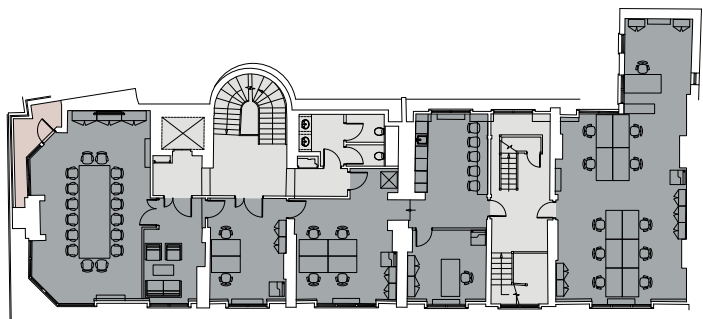
Robert Street

4th Floor Indicative Fit-out

2,224 sq ft / 207 sq m

Open plan desks	17
1 person office	1
16 person meeting room	1
Tea point / breakout area	1

Total occupancy **18**



Robert Street

■ Lettable space ■ Terrace ■ Core







1. 3rd floor office
2. Fireplace detail
3. 4th floor view
4. View to 1st floor terrace



Location

Perfectly situated between the River Thames and Covent Garden, 3 Robert Street offers access to some of London's most renowned restaurants, bars and cafés, whether it be informal or high-end.

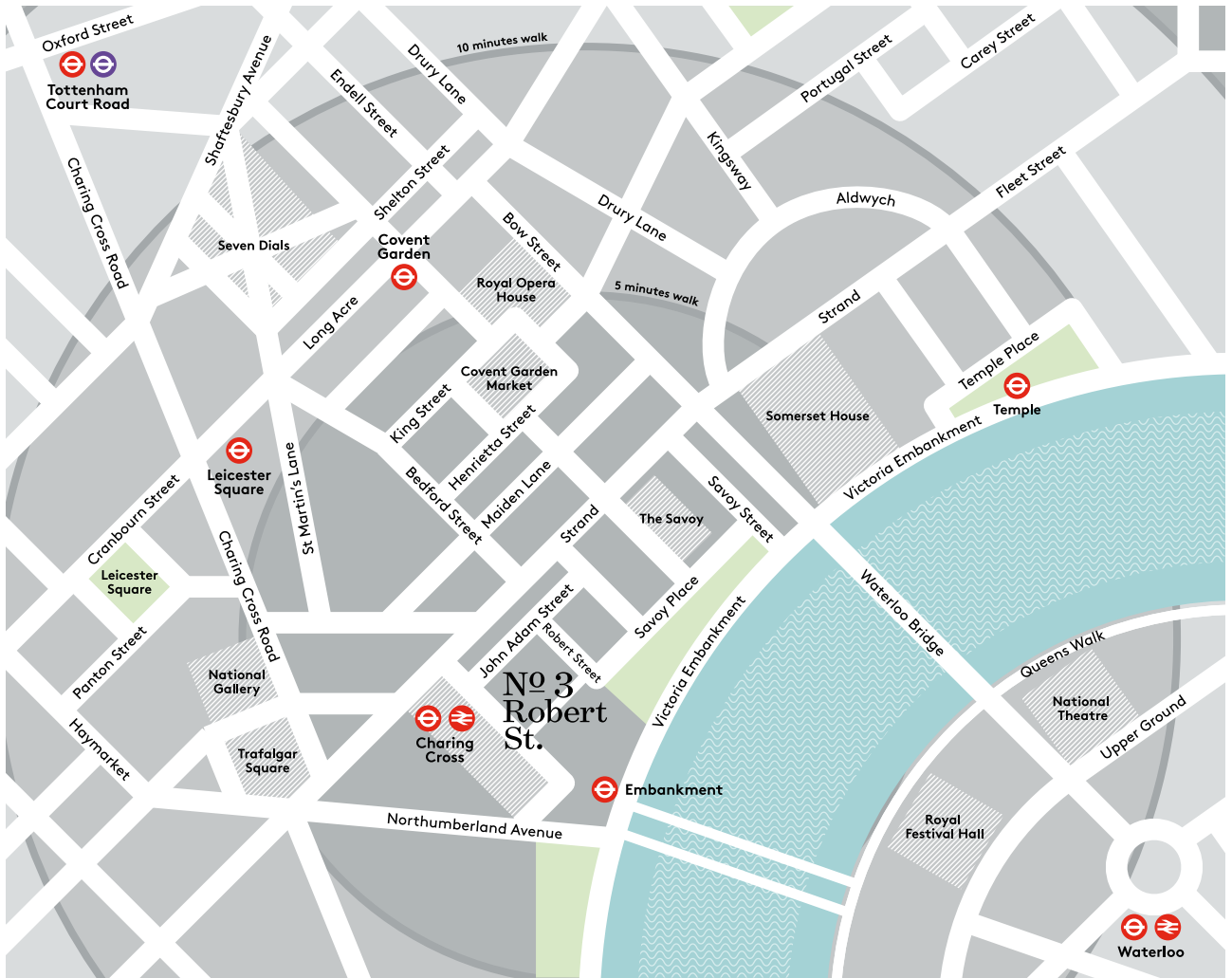
The building is ideally situated for connections across London and beyond with Charing Cross station just two minutes away.



Connectivity



Walk times taken from the building entrance. Source: TfL.



Local Amenities

Food & Drink

- Aubaine
- Balthazar
- Milk Train
- Café Murano
- Flat Iron
- Franco Manca
- Rules
- Mr Fogg's Tavern
- Oystermen
- Smith & Wollensky
- Sticks 'n' Sushi
- The Ivy
- Gordon's Wine Bar
- The Delaunay

Retail

- Agnes B
- Arket
- Barbour
- Burberry
- Cos
- Dyptique
- Joseph Cheaney & Sons
- Lululemon
- Mulberry

Hotels

- The Savoy
- One Aldwych
- ME Hotel

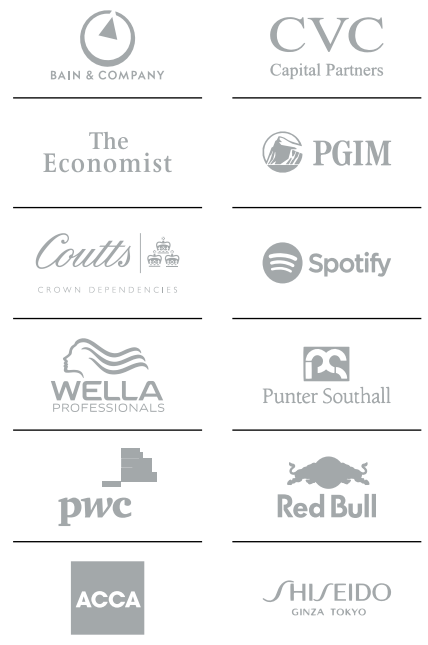
Gyms & Wellness

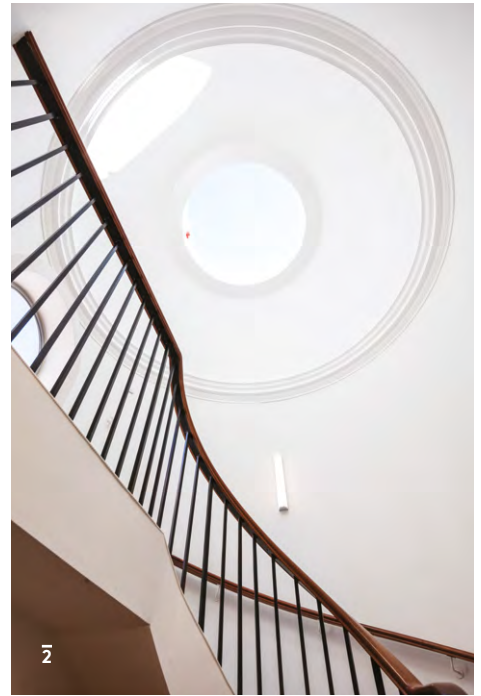
- Gymbox
- Virgin Active
- Triyoga
- Sweat It
- Fitness First

Culture

- English National Opera
- National Theatre
- Royal Festival Hall
- Royal Opera House

Local Occupiers





1. Staircase to roof terrace
2. Internal staircase detail
3. Roof terrace & views across River Thames



Further Information



Rhys Evans

D +44 (0)20 7025 1393

M +44 (0)7788 724 400

E revans@monmouthdean.com

James Hendry

D +44 (0)20 7025 1395

M +44 (0)7896 957959

E jhendry@monmouthdean.com

Rebecca Saxon

D +44 020 7025 1397

M +44 (0)7899 677 034

E rsaxon@monmouthdean.com

Misrepresentations Act 1967

Whilst all the information in this brochure is believed to be correct, neither the agent nor the client guarantee its accuracy nor is it intended to form any part of any contract. All areas quoted are approximate. November 2018.

Designed & Produced by Cre8te
020 3468 5760 – cre8te.london

