



CORPORATE REALTY

201 St. Charles Ave., Suite 4411, New Orleans, LA 70170
504.581.5005 | corp-realty.com

NEW CONSTRUCTION | FOR LEASE

Retail End Cap with Drive-Thru

3112 Veterans Memorial Drive

ABBEVILLE, LA 70510

William Sadler

wsadler@corp-realty.com
504.581.5005

Richard Weber

rweber@corp-realty.com
504.581.5005



NEW CONSTRUCTION WITH NATIONAL CO-TENANT

3112 Veterans Memorial Drive, Abbeville, LA 70510

PROPERTY DESCRIPTION

Join T-Mobile in this new two-tenant retail building currently under construction. The available 1,864 rsf space features a drive-thru window. The center, which will be delivered by the 2nd Quarter of 2022, has 27 parking spaces.

This property is located on Veterans Memorial Drive, a robust retail corridor between downtown Abbeville and the Abbeville Chris Crusta Memorial Airport. It is across from Walmart Supercenter and other established tenants in surrounding retail centers, such as Hibbitt Sports, Anytime Fitness, Dollar Tree, Cato, Shoe Dept, and Chili's.

PROPERTY DESCRIPTION

SIZE: 1,864 rsf
RENTAL RATE: Contact Agent



CORPORATE REALTY

William Sadler
 wsadler@corp-realty.com
 504.581.5005

Richard Weber
 rweber@corp-realty.com
 504.581.5005



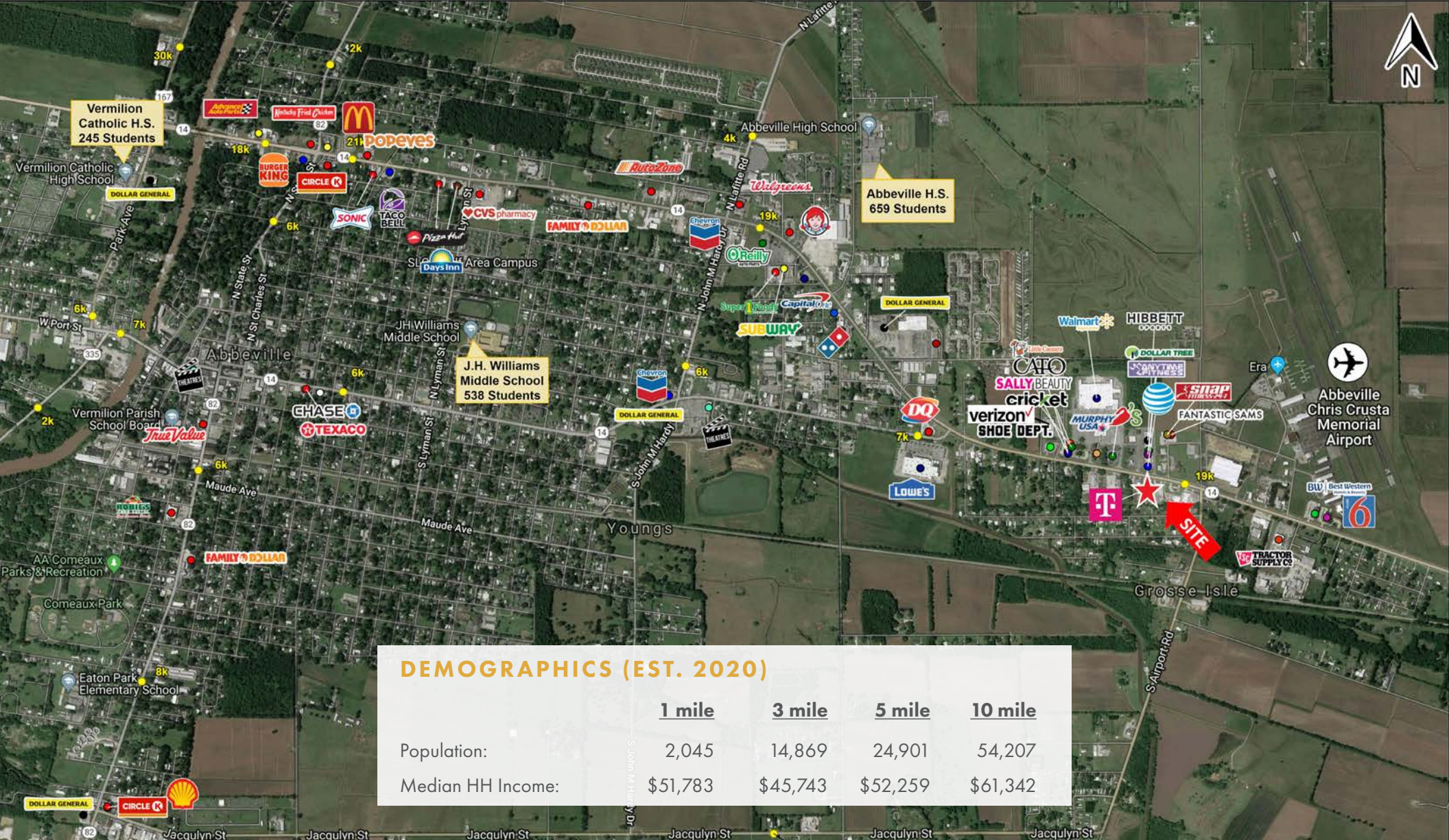
3112 VETERANS MEMORIAL DRIVE



CORPORATE REALTY

William Sadler
wsadler@corp-realty.com
504.581.5005

Richard Weber
rweber@corp-realty.com
504.581.5005



3112 VETERANS MEMORIAL DRIVE

NEW CONSTRUCTION | FOR LEASE

Retail End Cap with Drive-Thru

3112 Veterans Memorial Drive, Abbeville, LA 70510



William Sadler
wsadler@corp-realty.com
504.581.5005



Richard Weber
rweber@corp-realty.com
504.581.5005



CORPORATE REALTY

201 St. Charles Ave., Suite 4411, New Orleans, LA 70170
504.581.5005 | corp-realty.com

The information contained herein has been obtained from sources that we deem reliable. No representation or warranty is made as to the accuracy thereof, and it is submitted subject to errors, omissions, change of price, or other conditions, or withdrawal without notice. Licensed in Louisiana, 5/2021