

Medical Office For Sublease



Offices at Hampton Village 11512 Lake Mead Ave. #605-606, Jacksonville, FL 32256

- Space Available: +/- 2,500 SF
- Lease Rate: \$19.50/SF modified gross (plus electric and janitorial)
- Floorplan includes 9+ offices, 2 restrooms, break area and large reception area.
- Sublease expires February 28, 2018.
- Parking will support medical use.
- Built in 2006—Poured concrete walls.
- Zoning: PUD - Professional or Medical
- Centrally located with easy access to 9A and JT Butler Blvd
- Convenient to restaurants and shopping at St. Johns Town Center, Southside, Baymeadows and Hodges residential communities and the Beaches.

For additional
information contact:

Katie Kirchner
katiek@strategicsites.com

Or

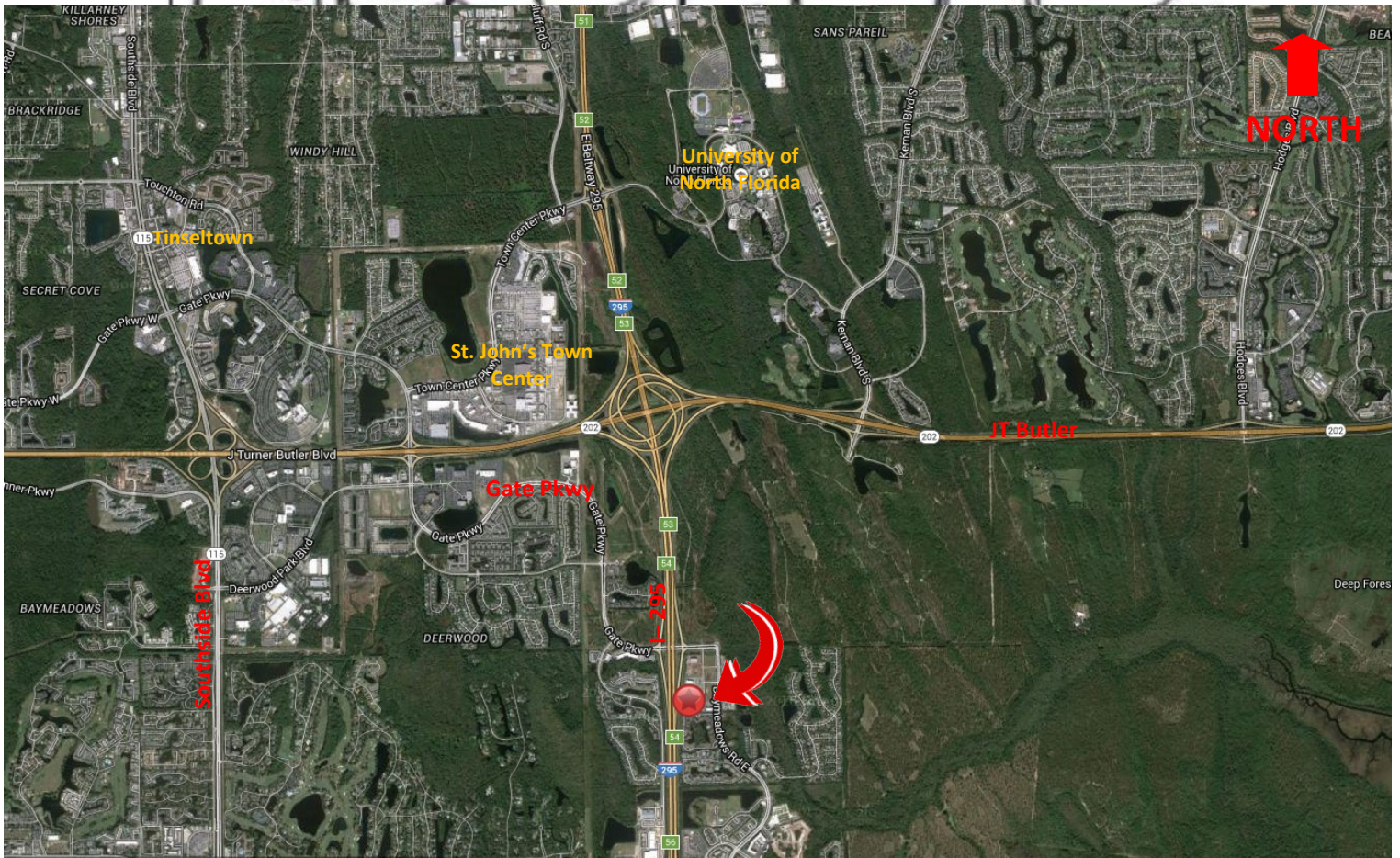
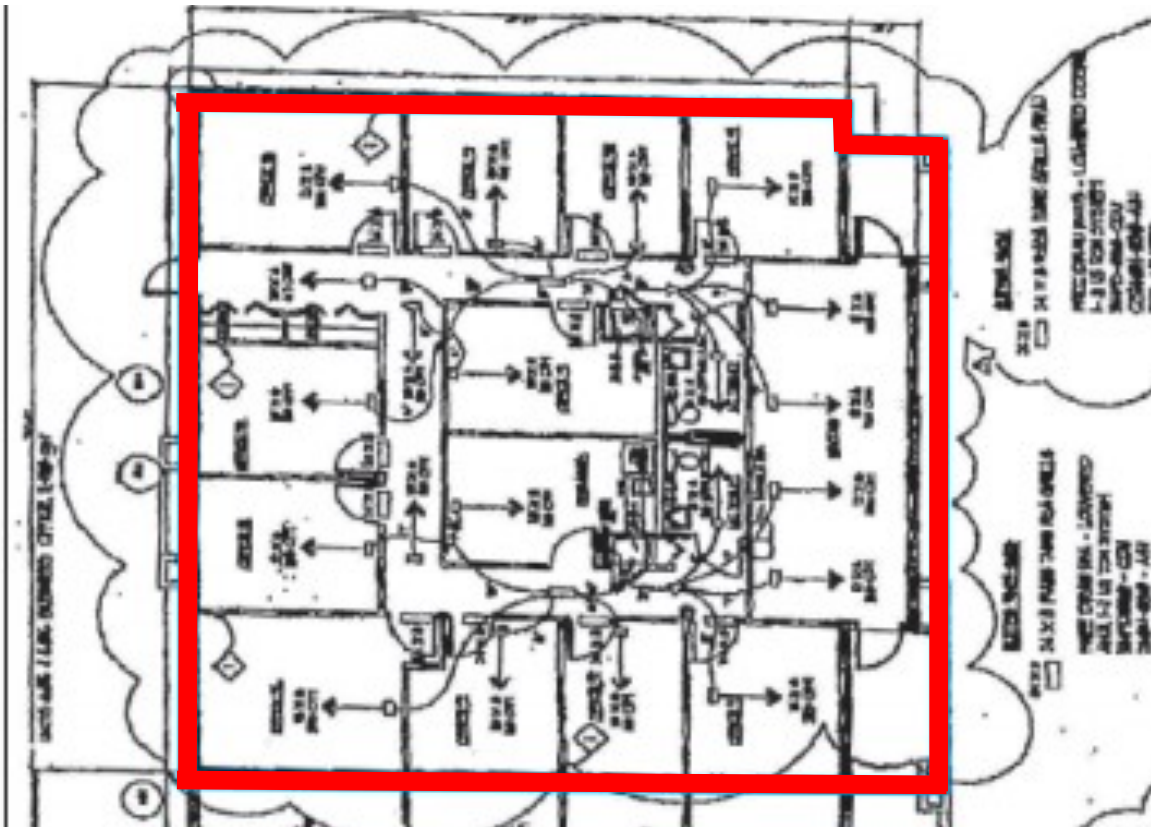
Kate Clifford
kate@strategicsites.com

422 Jacksonville Drive, Jacksonville Beach, FL ~ 904-242-2828 ~ www.strategicsites.com

Client First through Service, Knowledge and Integrity

Notice of Disclaimer: Details contained herein are believed to be correct: the information is subject to errors, omissions, price changes, or withdrawal without notice.

Floor Plan & Location Map



422 Jacksonville Drive, Jacksonville Beach, FL ~ 904-242-2828 ~ www.strategicsites.com

Client First through Service, Knowledge and Integrity

Notice of Disclaimer: Details contained herein are believed to be correct: the information is subject to errors, omissions, price changes, or withdrawal without notice.