

# FOR LEASE

221 MAIN ST N  
STILLWATER, MN 55082

**3000-6650 SF**  
**Premier Office Space**



**Jon Whitcomb** Broker / Owner

1950 Northwestern Ave N #101  
Stillwater, MN 55082

Cell 651.351.5130  
Office 651.351.5005

Email Jon@MetroEastCRE.com  
Web [www.MetroEastCRE.com](http://www.MetroEastCRE.com)



# FOR LEASE: Premier Office Space

221 Main St N | Stillwater, MN 55082



## Property Information

Building Size:	24,837 SF
Space:	6650
Status:	90 Days Notice
Rental Rate:	\$20 NNN
CAM:	\$5.15
2026 Tax:	\$4.82

Exceptional riverview office space that has not been available for nearly 20 years. High quality professional office finishes including kitchenette many private offices and conference space. Likely the best riverview office space in the City. Private outdoor deck with seating to enjoy the St Croix River and all it has to offer. Convenient to local restaurants and shopping in Historic Downtown Stillwater.



COMMERCIAL REAL ESTATE SERVICES

**Jon Whitcomb** Broker / Owner

1950 Northwestern Ave N #101  
Stillwater, MN 55082

Cell 651.351.5130  
Office 651.351.5005

Email [Jon@MetroEastCRE.com](mailto:Jon@MetroEastCRE.com)  
Web [www.MetroEastCRE.com](http://www.MetroEastCRE.com)

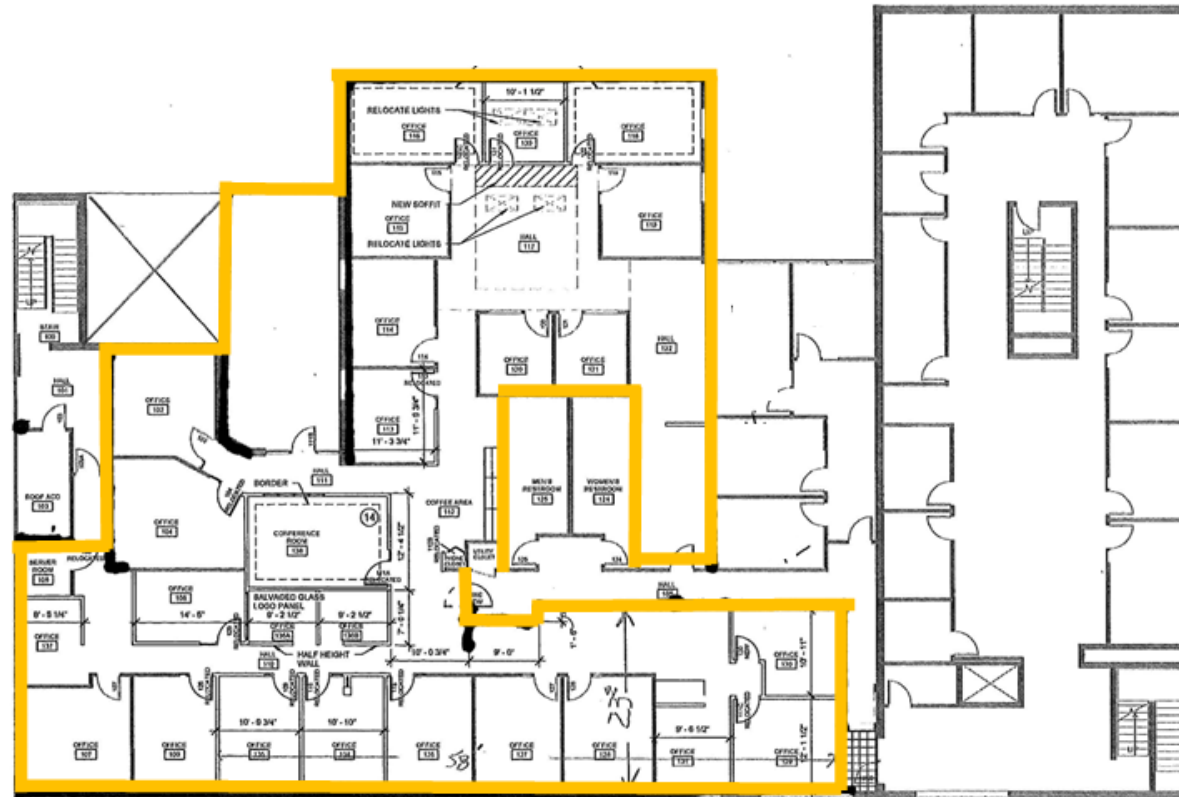
The information contained herein has been provided by the property owner or obtained from sources deemed reliable. Although the information is believed to be accurate, it is not guaranteed. The property is subject to price change, prior sale or lease and withdrawal from the market, without notice. Buyer is responsible to conduct its own due diligence, as this offering contains no representations or warranties.

# FOR LEASE: Premier Office Space

221 Main St N | Stillwater, MN 55082

Suite #221

3000-6650 SF



COMMERCIAL REAL ESTATE SERVICES

**Jon Whitcomb** Broker / Owner

1950 Northwestern Ave N #101  
Stillwater, MN 55082

Cell 651.351.5130  
Office 651.351.5005

Email [Jon@MetroEastCRE.com](mailto:Jon@MetroEastCRE.com)  
Web [www.MetroEastCRE.com](http://www.MetroEastCRE.com)

The information contained herein has been provided by the property owner or obtained from sources deemed reliable. Although the information is believed to be accurate, it is not guaranteed. The property is subject to price change, prior sale or lease and withdrawal from the market, without notice. Buyer is responsible to conduct its own due diligence, as this offering contains no representations or warranties.

# FOR LEASE: Premier Office Space

221 Main St N | Stillwater, MN 55082



COMMERCIAL REAL ESTATE SERVICES

**Jon Whitcomb** Broker / Owner

1950 Northwestern Ave N #101  
Stillwater, MN 55082

Cell 651.351.5130  
Office 651.351.5005

Email [Jon@MetroEastCRE.com](mailto:Jon@MetroEastCRE.com)  
Web [www.MetroEastCRE.com](http://www.MetroEastCRE.com)

The information contained herein has been provided by the property owner or obtained from sources deemed reliable. Although the information is believed to be accurate, it is not guaranteed. The property is subject to price change, prior sale or lease and withdrawal from the market, without notice. Buyer is responsible to conduct its own due diligence, as this offering contains no representations or warranties.

# FOR LEASE: Premier Office Space

221 Main St N | Stillwater, MN 55082



COMMERCIAL REAL ESTATE SERVICES

**Jon Whitcomb** Broker / Owner

1950 Northwestern Ave N #101  
Stillwater, MN 55082

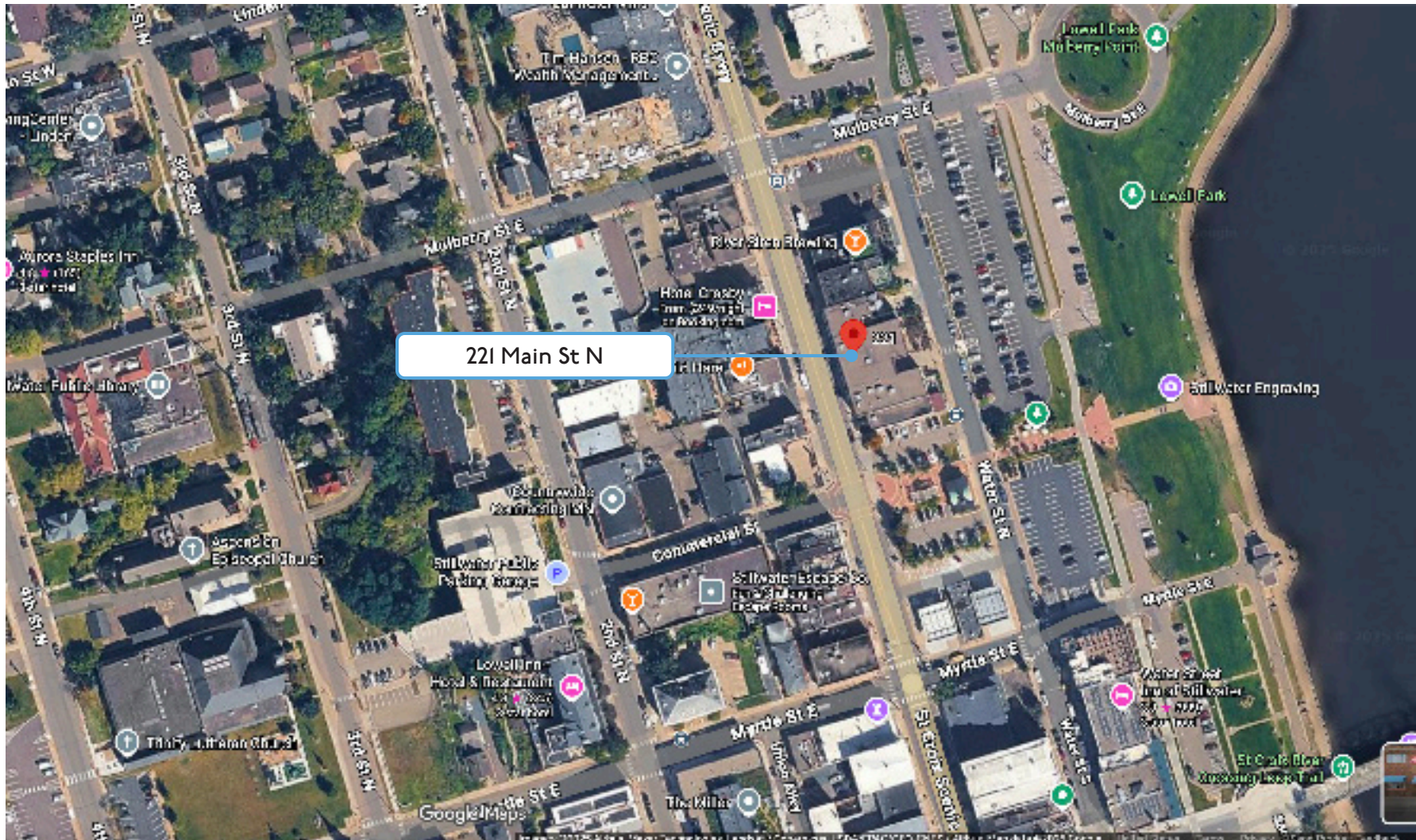
Cell 651.351.5130  
Office 651.351.5005

Email [Jon@MetroEastCRE.com](mailto:Jon@MetroEastCRE.com)  
Web [www.MetroEastCRE.com](http://www.MetroEastCRE.com)

The information contained herein has been provided by the property owner or obtained from sources deemed reliable. Although the information is believed to be accurate, it is not guaranteed. The property is subject to price change, prior sale or lease and withdrawal from the market, without notice. Buyer is responsible to conduct its own due diligence, as this offering contains no representations or warranties.

# FOR LEASE: Premier Office Space

221 Main St N | Stillwater, MN 55082



COMMERCIAL REAL ESTATE SERVICES

**Jon Whitcomb** Broker / Owner

1950 Northwestern Ave N #101  
Stillwater, MN 55082

Cell 651.351.5130  
Office 651.351.5005

Email [Jon@MetroEastCRE.com](mailto:Jon@MetroEastCRE.com)  
Web [www.MetroEastCRE.com](http://www.MetroEastCRE.com)

The information contained herein has been provided by the property owner or obtained from sources deemed reliable. Although the information is believed to be accurate, it is not guaranteed. The property is subject to price change, prior sale or lease and withdrawal from the market, without notice. Buyer is responsible to conduct its own due diligence, as this offering contains no representations or warranties.