

# L3helix

Edmund Street, Liverpool

**STYLISH NEW  
OFFICES TO LET**



home



description



accommodation



gallery



location



amenities



contact



## TRADITIONAL AND MODERN

Helix is a 4 storey period office building, designed and built with an Art Deco influence. It has an extensive frontage to Old Hall Street, the impressive principal entrance faces Edmund Street.

Incorporated into the external facade is a sculpture by George Herbert Tyson Smith.

Born in Liverpool he was one of the regions best known architectural sculptors of the time. He attended Liverpool College of Art and was trained in drawing by the renowned artist, Augustus John.

Helix is currently has undergone a major remodelling with a scheme / brand that enhances it's stylish period qualities whilst incorporating contemporary visual and architectural twists. Upgraded technology and energy efficient credentials, mean that it will compete with all that new buildings have to offer.

The reception and common areas are spacious and well illuminated, with comfortable waiting zones and a welcoming ambiance.

Accommodation ranges from entire floors to small office suites.

There are a number of 'added value' facilities within the building including:

- Kitchen / break out areas
- Meeting rooms with WiFi
- Additional meeting spaces
- Roof top garden
- Cycle storage
- Showers

All designed to fulfil the expectations of todays office occupiers.



home



description



accommodation



gallery



location



amenities



contact



## ACCOMMODATION

Floors	Sq ft	Sq m
Ground A	LET	
Ground B	1,374	127.6
First A	LET	
First B	2,551	236.9
Second A	3,315	307.9
Second B	LET	-
Third	LET	-
<b>Total</b>	<b>11,130</b>	<b>1033.9</b>



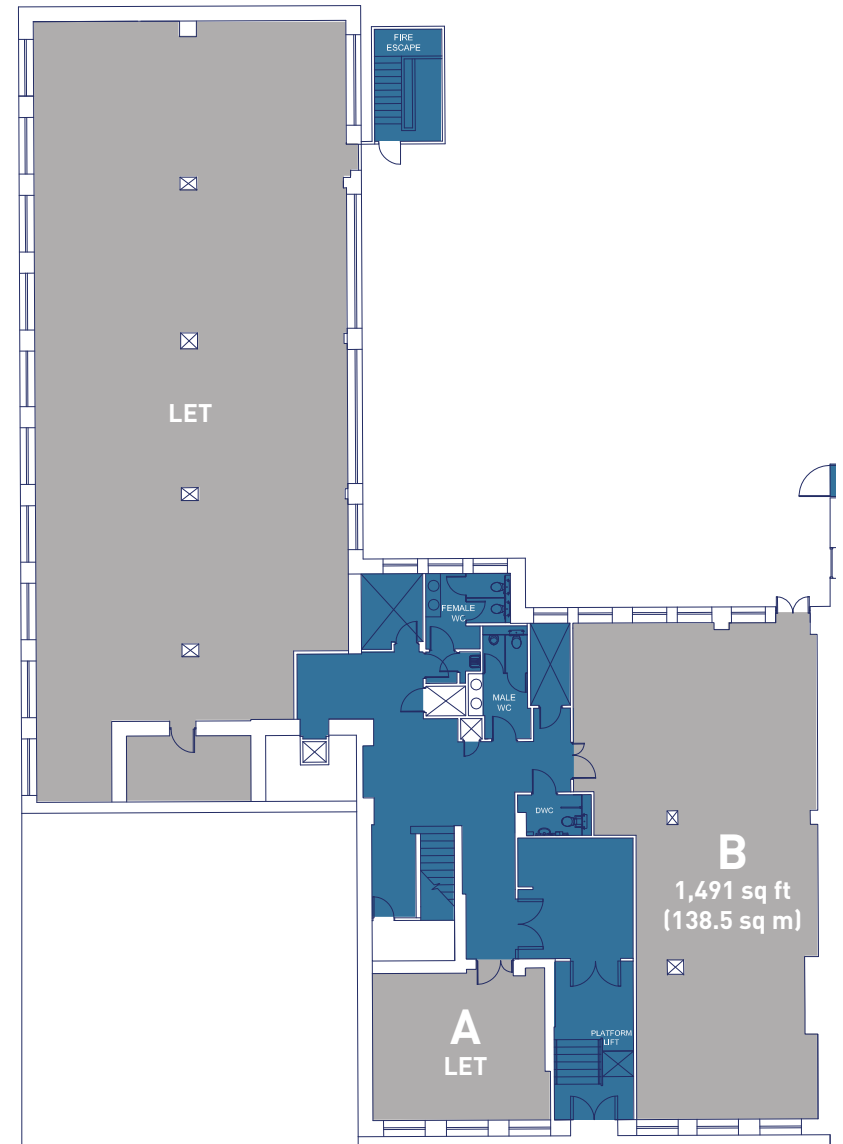
[GROUND FLOOR →](#)

[Go to FIRST FLOOR →](#)

[Go to SECOND FLOOR →](#)

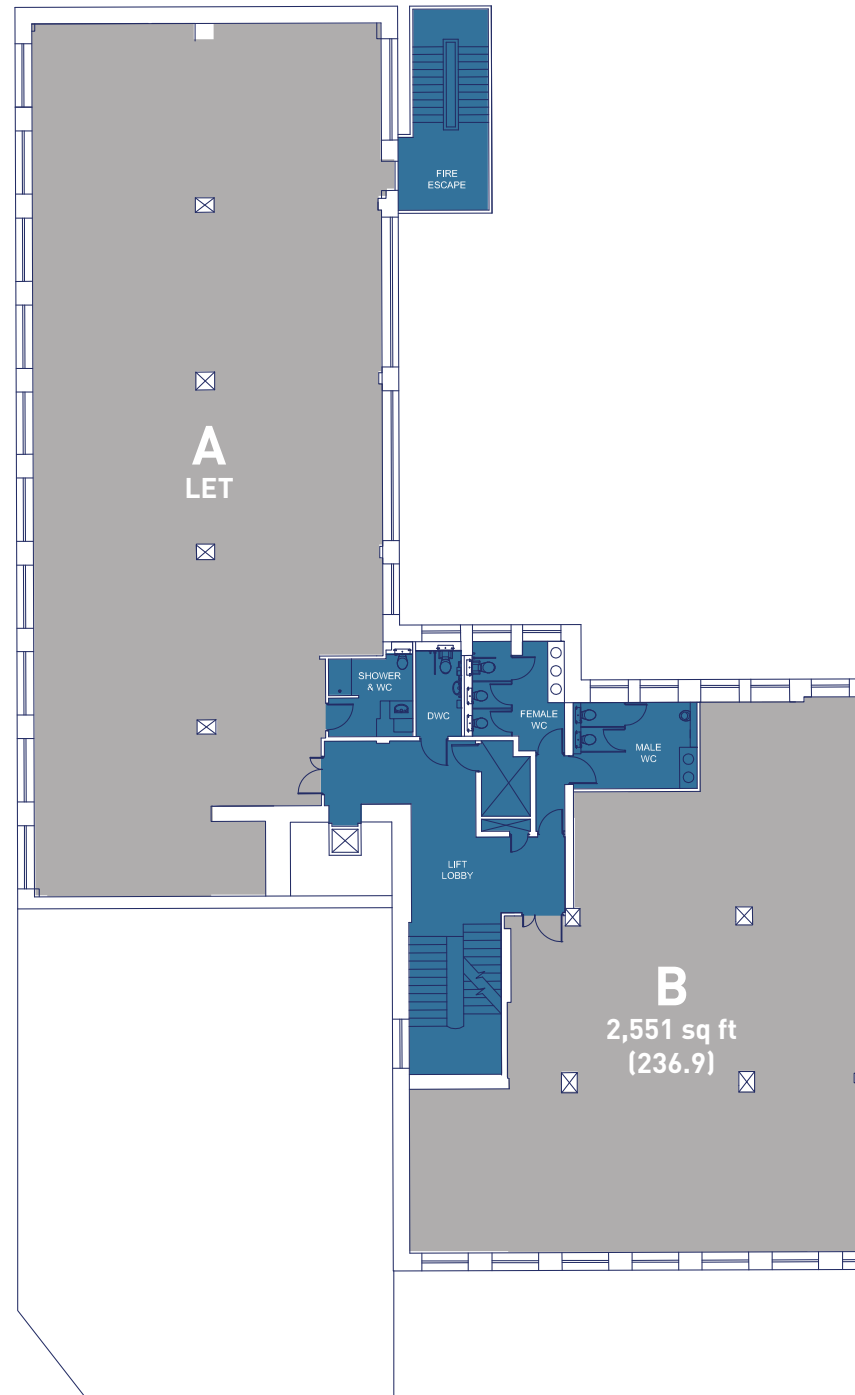
[Go to THIRD FLOOR →](#)

## GROUND FLOOR PLAN



## FIRST FLOOR PLAN

Floors	Sq ft	Sq m
First A	LET	
First B	2,551	236.9

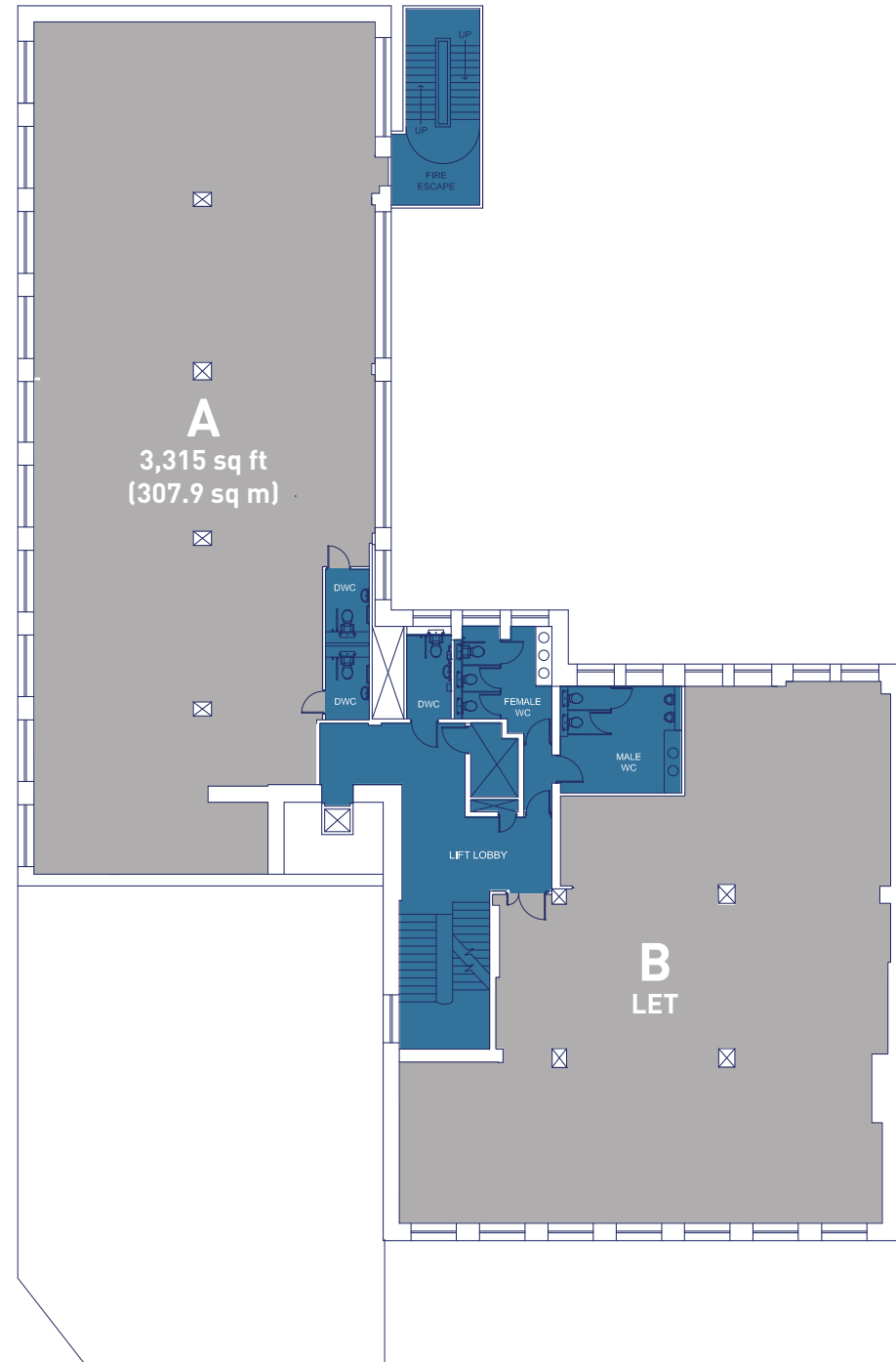


[click to return to Ground Floor](#)



## SECOND FLOOR PLAN

Floors	Sq ft	Sq m
Second A	3,315	307.9
Second B	LET	-

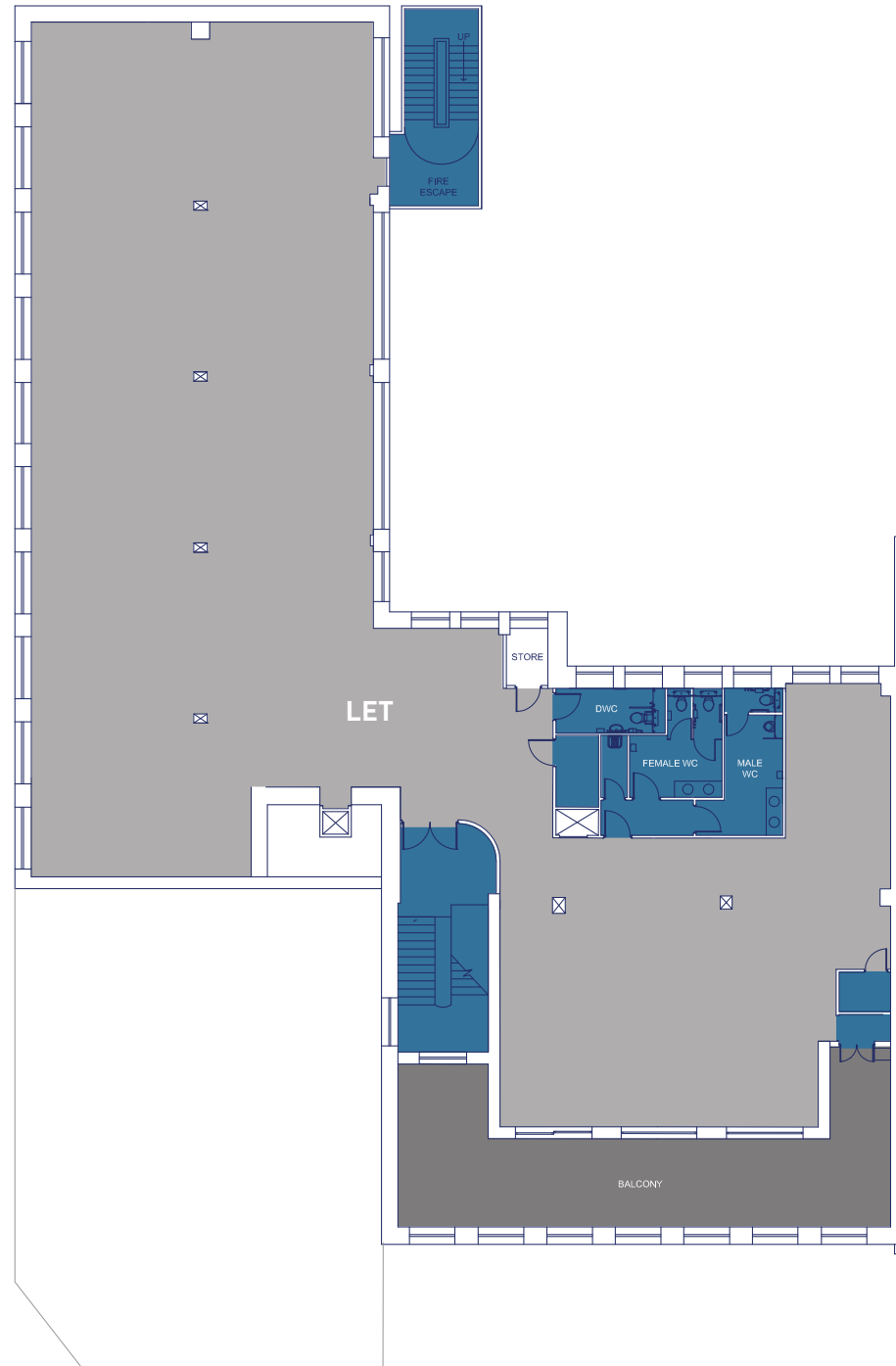


[click to return to Ground Floor](#)



## THIRD FLOOR PLAN

Floors	Sq ft	Sq m
Third	LET	-



[click to return to Ground Floor](#)



home



description



accommodation



gallery



location



amenities



contact























# L3helix

The Aloft  
Liverpool  
Hotel

Met  
Quarter

Piccolino

Olive  
Bar &  
Restaurant  
Viva  
Brazil

San  
Carlo

Bacaro

Restaurant  
Bar & Grill

Liverpool  
ONE

MEET  
Steak House

30  
James  
Street  
Hotel

Hilton Hotel  
Albert Dock



click for  
a map of  
the city

RIVER MERSEY

Radisson  
Blu Hotel

Panoramic  
34  
Restaurant

Hotel  
Indigo

Fazenda  
Rodizio  
Bar & Grill  
Malmaison

Town  
Hall

Hard  
Days  
Night

Thistle  
Atlantic  
Hotel

Crowne  
Plaza

Pret A  
Manger

Matou  
Pan Asian  
Restaurant



home



description



accommodation



gallery



location



amenities



contact





## EXCELLENT ACCESS

Helix is centrally located in the City's business hub, close to the main inner ring road and Tithebarn Street which offers excellent road access to the M62, M58, and the national motorway network. The Kingsway and Queensway Mersey Tunnel entrances are both within a few minutes drive.

Merseytravel operates extensive regular bus services from Liverpool ONE bus station to all parts of the Merseyside region.

Moorfields station is about 300 meters away and provides regular commuter services on the Mersey Rail network to the surrounding districts and the Wirral, as well as connections to Lime Street mainline station.

Liverpool John Lennon Airport is 20 minutes to the South of the City and Manchester Airport is a further 25 minutes drive.

Mersey Ferries operate a regular passenger service across the Mersey. P&O and Stenna operate daily sailings to the Isle of Man, Belfast and Dublin.



[click to return to aerial](#)





## OUT AND ABOUT

Helix sits conveniently in the heart of both the established and new business districts.

The immediate area has an extensive and diverse mix of bars, cafes and restaurants. Quality hotels open spaces and the world famous Liverpool Waterfront are within a few minutes walk.

High profile designer brands can be found in Liverpool ONE, the Met Quarter, Cavern Walks and the traditional retail areas of Lord Street and Church Street which are in close proximity.



home



description



accommodation



gallery



location

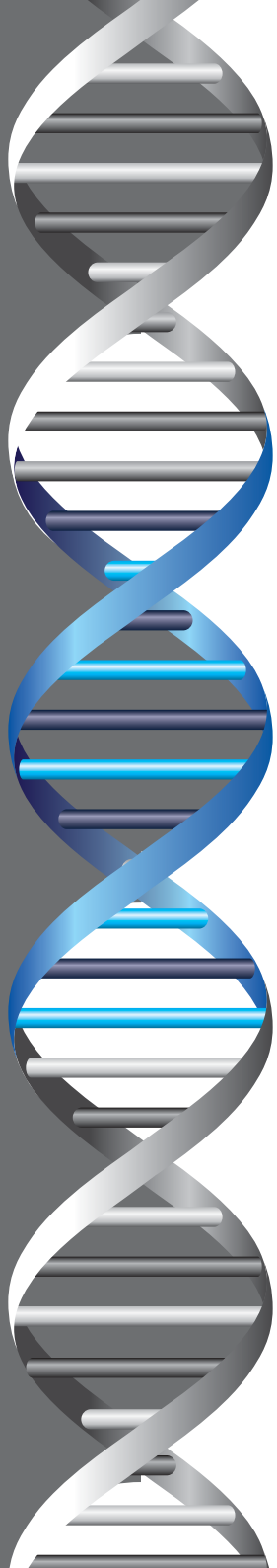


amenities



contact





# L3helix

Edmund Street, Liverpool

## MISREPRESENTATION ACT

Hitchcock Wright & Partners and CBRE for themselves and the vendors or lessors of this property whose agents they are give notice that (1) The particulars do not constitute any part of an offer or contract, (2) All statements contained in these particulars as to this property are made without responsibility on the parts of Hitchcock Wright & Partners, CBRE or vendors or lessors, (3) All descriptions, dimensions and other particulars are given in good faith and are believed to be correct, but any intending purchaser or tenant should not rely on them as statements or representations of fact and must satisfy themselves by way of investigation or otherwise as to the correctness of each of them, (4) No person in the employment of Hitchcock Wright & Partners or CBRE has any authority to make or give any representation or warranty whatsoever in relation to this property, (5) Unless otherwise stated prices and rents are quoted exclusive of VAT. May 2016. Design: Alphabet Design 0151 707 1199 [www.alphabet-design.co.uk](http://www.alphabet-design.co.uk)



[Andrew.Byrne@cbre.com](mailto:Andrew.Byrne@cbre.com)



[brian.ricketts@hwapd.co.uk](mailto:brian.ricketts@hwapd.co.uk)  
[www.hitchcockwright.co.uk](http://www.hitchcockwright.co.uk)



home



description



accommodation



gallery



location



amenities



contact