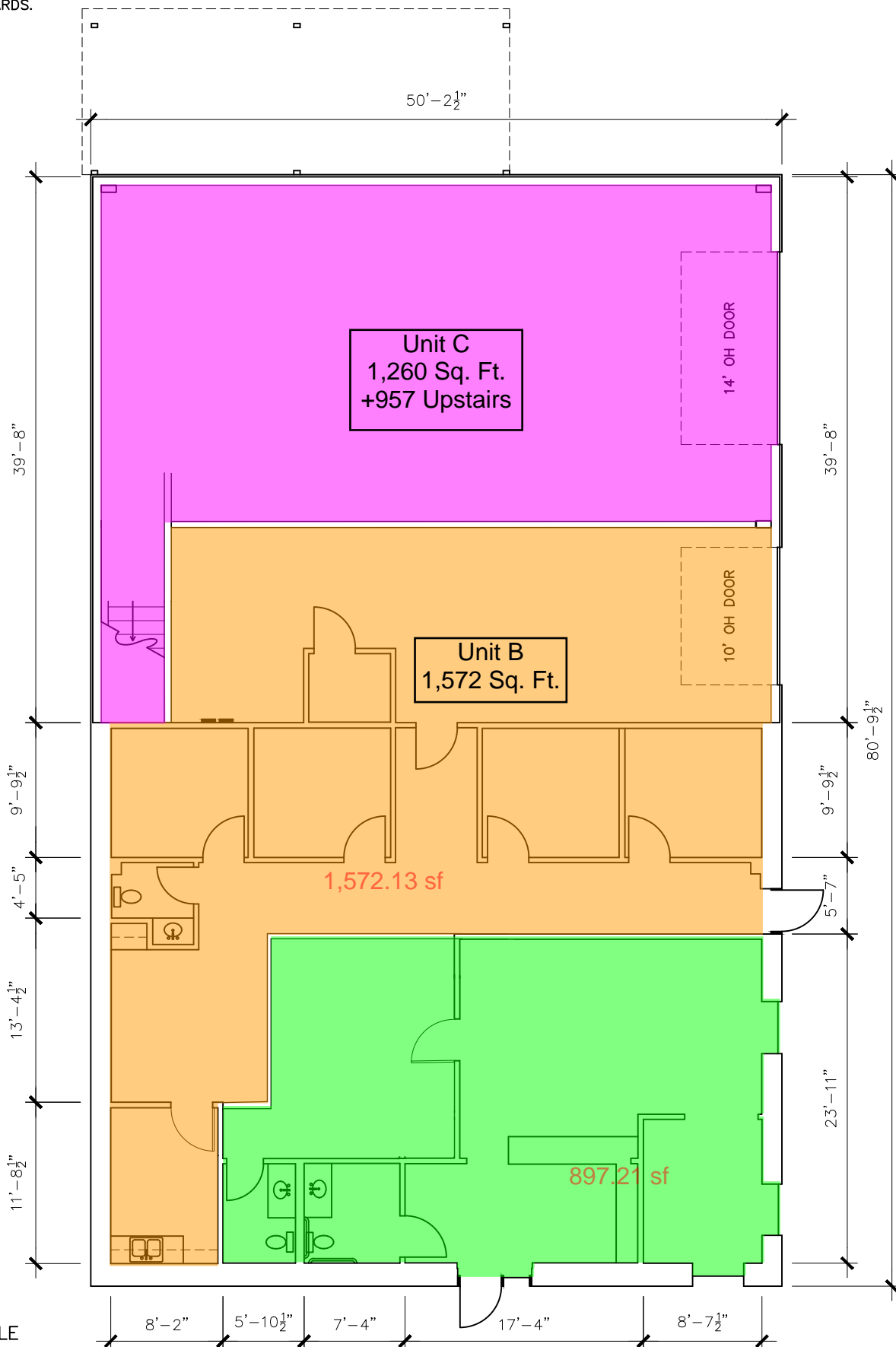


DIMENSIONS ARE TO SHOW ROOM SIZES.  
SQUARE FOOTAGE CALCULATIONS ARE DONE  
TO BOMA STANDARDS.



NOT TO SCALE

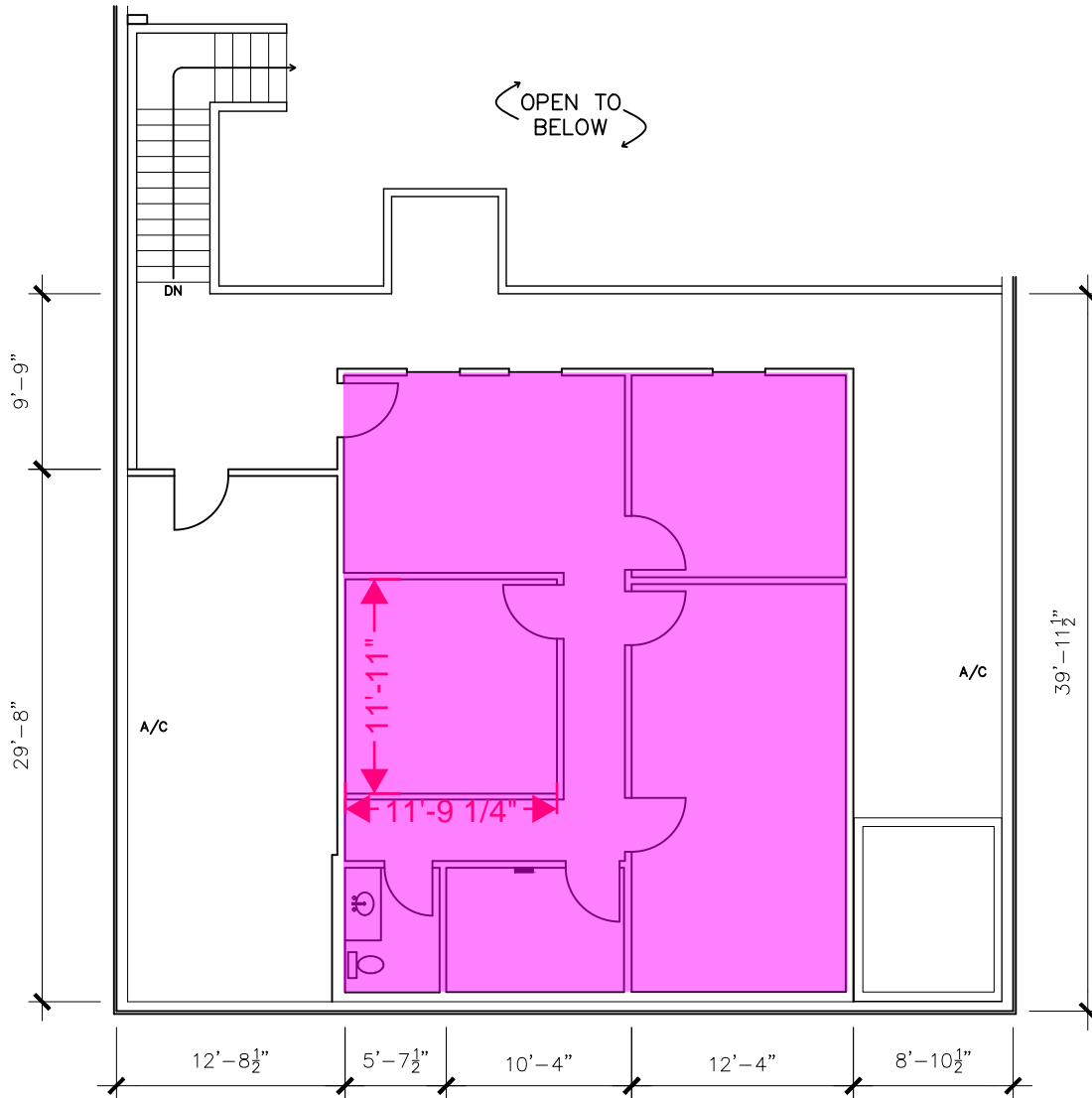
Drawing for:  
CHJ Commercial, LLC  
14309 FM 1826  
Austin, TX 78737

FIRST FLOOR  
641 COMMERCIAL DRIVE  
AUSTIN, TEXAS  
RENTABLE AREA: 6,130 S.F.

THE MEASUREMENTS, FLOOR PLANS, AND  
CALCULATIONS ARE ACCURATE USING  
BOMA MEASUREMENT STANDARDS FOR  
INDUSTRIAL BUILDINGS.  
ANSI/BOMA 265.2 - 2019  
Project No.: 220103.01  
Date: September 9, 2020  
©2020

**+ DIMENSIONS +**  
FLOOR PLANS  
Austin, Texas  
dimensionsfloorplans.com  
Phone: (512)342-0114

DIMENSIONS ARE TO SHOW ROOM SIZES.  
SQUARE FOOTAGE CALCULATIONS ARE DONE  
TO BOMA STANDARDS.



NOT TO SCALE

Drawing for:  
 CHJ Commercial, LLC  
 14309 FM 1826  
 Austin, TX 78737

SECOND FLOOR  
 641 COMMERCIAL DRIVE  
 AUSTIN, TEXAS  
 RENTABLE AREA: 6,130 S.F.

THE MEASUREMENTS, FLOOR PLANS, AND  
 CALCULATIONS ARE ACCURATE USING  
 BOMA MEASUREMENT STANDARDS FOR  
 INDUSTRIAL BUILDINGS.  
 ANSI/BOMA 265.2 - 2019  
 Project No.: 220103.01  
 Date: September 9, 2020  
 ©2020

**† DIMENSIONS †**  
 FLOOR PLANS  
 Austin, Texas  
 dimensionsfloorplans.com  
 Phone: (512)342-0114