

72 WEST 106TH STREET

GROUND FLOOR RETAIL SPACE FOR LEASE



As exclusive leasing agents we are pleased to present the following:

SPECS

SPACE Ground Floor – Approx. 600 RSF
 Mezzanine – Approx. 400 RSF

RENTAL Upon request

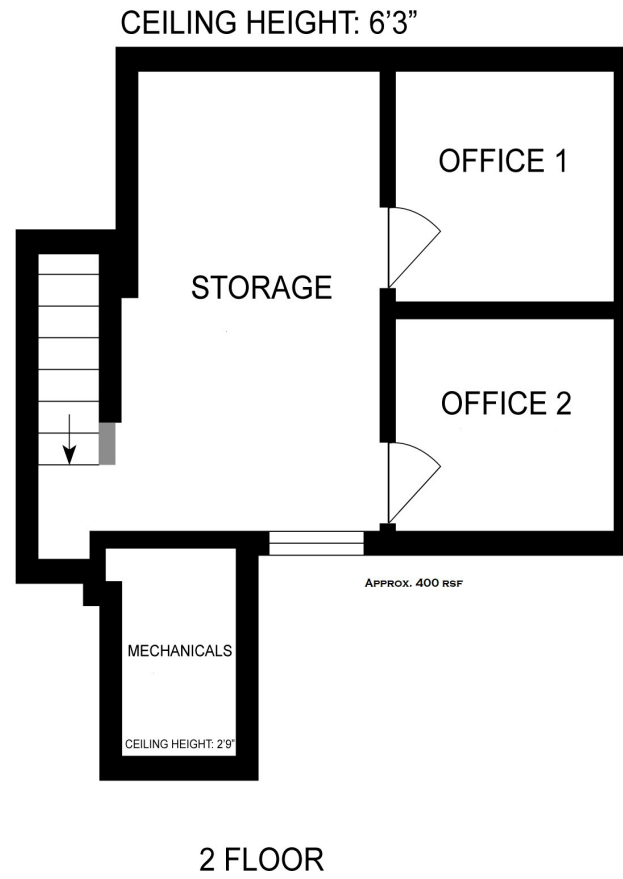
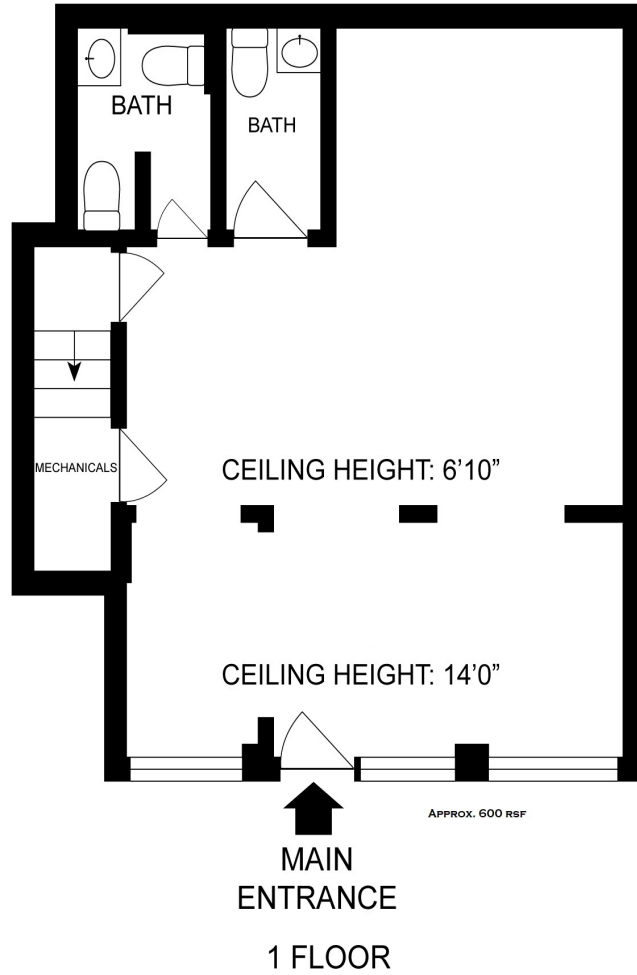
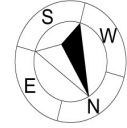
POSSESSION Immediate

FEATURES

- Suitable for Retail and Professional Office use
- Ground floor plus mezzanine with two private offices
- Located along the highly trafficked 106th Street commercial corridor
- Neighbors include: Chirping Chicken, Mighty Catch, Crepes on Columbus, SheShe Pizzeria, Osteria 106, Booker T. Washington Middle School, and more
- Steps from Central Park, 110th and 103rd Street B and C subway lines



FLOOR PLAN



ALL MEASUREMENTS ARE APPROXIMATE

72 WEST 106TH STREET



SCHEDULE AN APPOINTMENT TO VIEW TODAY!

WILLIAM ETHERIDGE

Licensed Real Estate Salesperson

O: 212 776 4362

wetheridge@elliman.com

 **Douglas Elliman**
Commercial