

For Sale

Historic Nicholson Farm House

14,000 SF



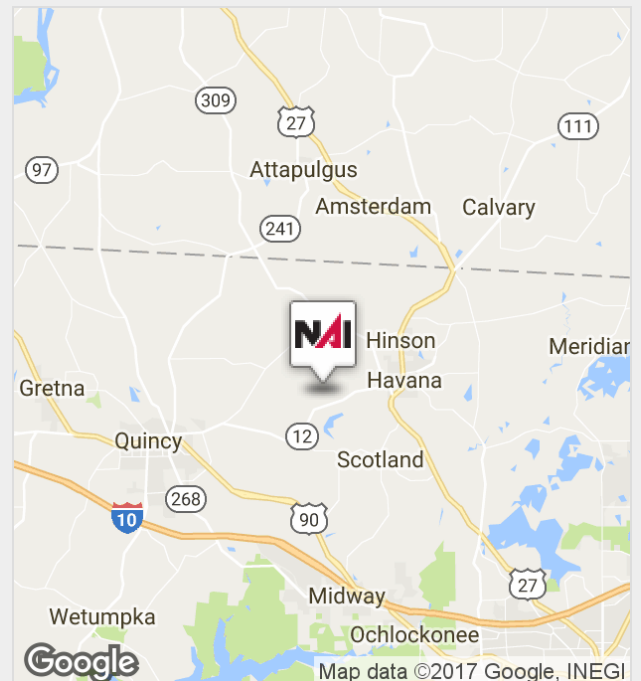
200 Coca Cola Ave.

200 Coca Cola Ave., Havana, Florida 32333

Property Features

- Over 14,000 SF of heated space and over 21,000 SF under roof in 8 buildings
- Over 47 acres with about 34 acres zoned commercial (the rest have rural residential zoning)
- Grounds are landscaped and include a spring, ravine, hiking trails, a 4-acre dog park, and a pond.
- Buildings included in the sale: Nicholson House, Shady Rest, Salem House, Patrick's Store, Littman House, Smokehouse, Esther's Beauty Salon, & Caretaker's Cottage

Sale Price: \$995,000



For more information:

Jim Taube, CCIM

C: 850 545 5649 • jtaube@talcor.com

NO WARRANTY OR REPRESENTATION, EXPRESS OR IMPLIED, IS MADE AS TO THE ACCURACY OF THE INFORMATION CONTAINED HEREIN, AND THE SAME IS SUBMITTED SUBJECT TO ERRORS, OMISSIONS, CHANGE OF PRICE, RENTAL OR OTHER CONDITIONS, PRIOR SALE, LEASE OR FINANCING, OR WITHDRAWAL WITHOUT NOTICE, AND OF ANY SPECIAL LISTING CONDITIONS IMPOSED BY OUR PRINCIPALS NO WARRANTIES OR REPRESENTATIONS ARE MADE AS TO THE CONDITION OF THE PROPERTY OR ANY HAZARDS CONTAINED THEREIN ARE ANY TO BE IMPLIED.

NAI TALCOR
1018 Thomasville Road, Suite 200A ,
Tallahassee, FL 32303
850 224 2300
naitalcor.com

For Sale

Historic Nicholson Farm House



Property Summary

Sale Price: \$995,000

Lot Size: 47.0 Acres

Building Size: 14,000 SF

Property Overview

White Dog Plantation, formally Nicholson Farmhouse Restaurant, is a village of historical buildings including the c.1828 Nicholson farmhouse, which is on the National Historic Register, as well as several historic buildings. Behind the village is a gorgeous ravine with a large spring, huge trees, and a nature trail open to the guests of White Dog Plantation. White Dog offers seven unique boutique guest rooms as well as Shady Rest, a 3,300 square foot meeting and event center.

The bulk of the property is zoned commercial (about 34 acres), which means the property has many potential uses other than just a retreat, for example, restaurant complex, retail stores, rehabilitation center.

Location Overview

Just 16 miles from I-10 and Tallahassee, 3 miles from the quaint town of Havana, and 7 miles from the historic town of Quincy

For Sale

Historic Nicholson Farm House



Nicholson House Front



Sea Oats Room in Nicholson House



Patrick's Store Bedroom



Patrick's Store



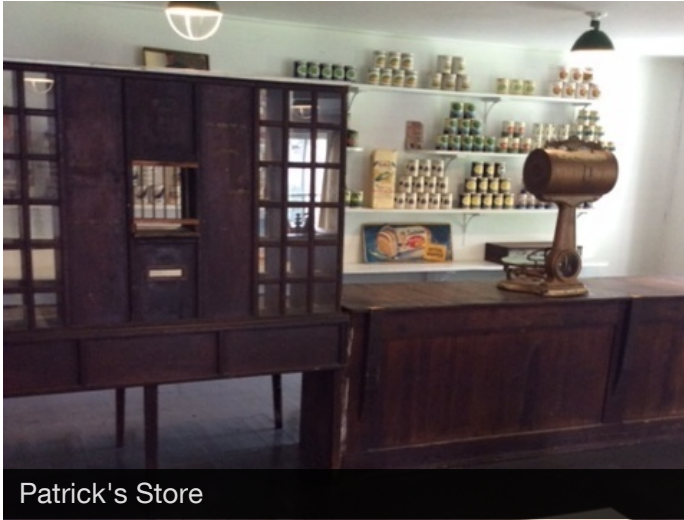
Salem House



Patrick's Store Exterior

For Sale

Historic Nicholson Farm House



Patrick's Store



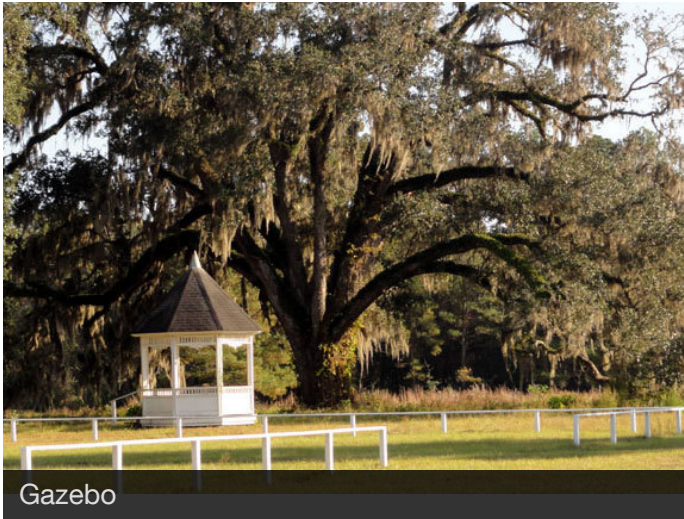
Patrick's Store Interior



Spanish Moss Room One



Pond



Gazebo



Smokehouse

For Sale

Historic Nicholson Farm House

