

FOR SALE

6,673 SF

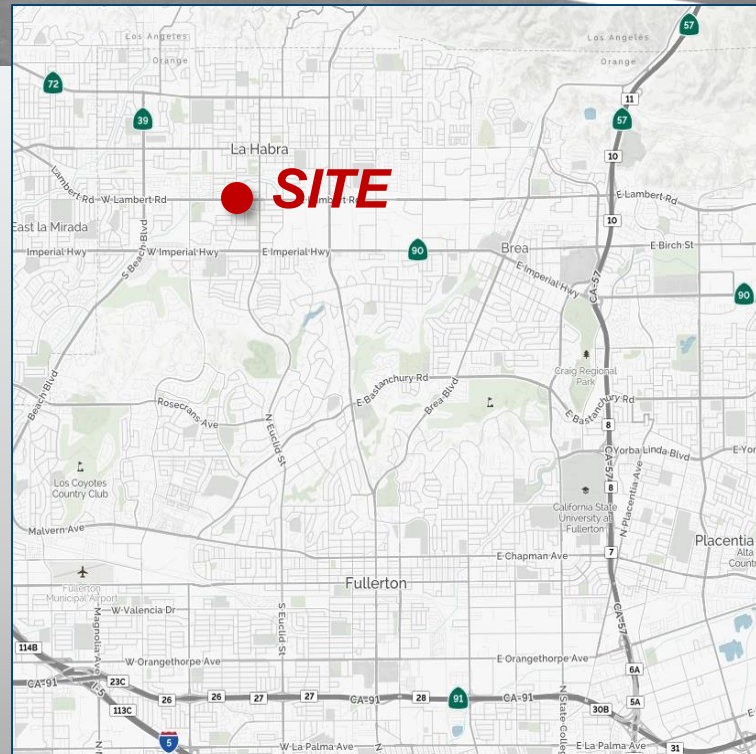
FREESTANDING INDUSTRIAL BUILDING



601 W. LAMBERT ROAD
LA HABRA, CA 90631

Property Features

- 6,673 SF Free Standing Industrial Building
- Approx. 2,000 SF of Office Space
- 18' Minimum Clear Height
- Concrete/Fenced Yard
- Four (12'X12') Ground Level Roll Up Doors
- Major Street Frontage
- Fee Simple Parcel- No Association Fees
- 2.5:1000 Parking Ratio
- Corner Location
- Divisible Building (Multiple Entrances/Meters)
- Zoned M-1 (verify)
- Convenient Access to the 57 Freeway



DENNIS HOLT
(714) 423-0169

Dennis.Holt@daumcommercial.com
CA License #01948978

PAUL GINGRICH
(714) 941-5333

Paul.Gingrich@daumcommercial.com
CA License #01129558

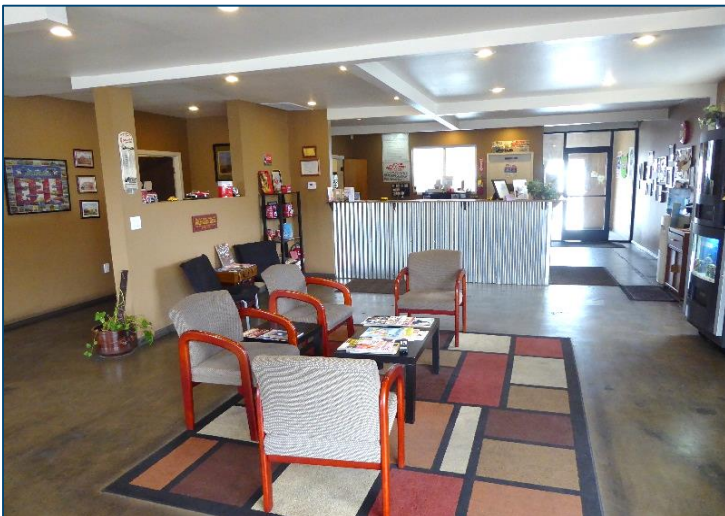
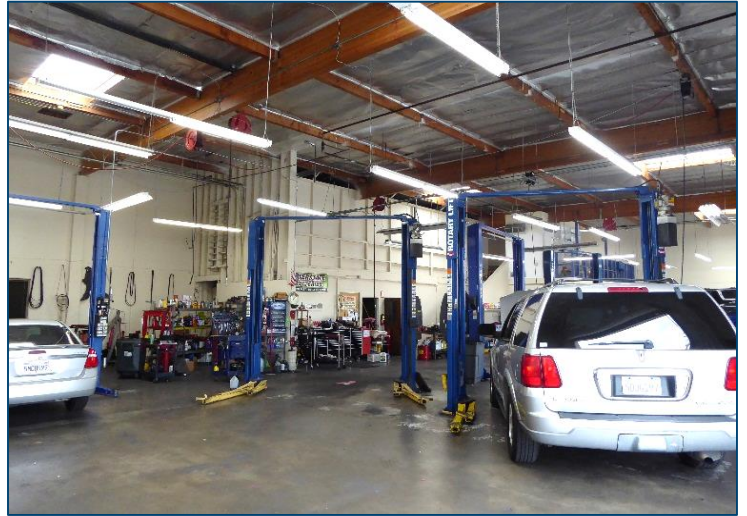
DAUM
COMMERCIAL REAL ESTATE SERVICES

4400 MacArthur Blvd., Ste. 950 | Newport Beach, CA 92660 • (714) 385-1801 PH | (714) 941-5343 FAX • www.DaumCommercial.com | D/Aq Corp. Lic. 01129558

The information contained herein has been obtained from sources we deem reliable. While we have no reason to doubt its accuracy, we do not guarantee it.

FOR SALE

6,673 SF FREE STANDING INDUSTRIAL BUILDING



DENNIS HOLT
(714) 423-0169

Dennis.Holt@daumcommercial.com
CA License #01948978

PAUL GINGRICH
(714) 941-5333

Paul.Gingrich@daumcommercial.com
CA License #01129558

DAUM
COMMERCIAL REAL ESTATE SERVICES

4400 MacArthur Blvd., Ste. 950 | Newport Beach, CA 92660 • (714) 385-1801 PH | (714) 941-5343 FAX • www.DaumCommercial.com | D/Aq Corp. Lic. 01129558

The information contained herein has been obtained from sources we deem reliable. While we have no reason to doubt its accuracy, we do not guarantee it.