



515

South Flower Street

Downtown Los Angeles

Trophy Sublease Opportunity

For Further Information, Contact:

Clay Hammerstein

Vice Chairman

Clay.Hammerstein@cbre.com

213.613.3055

Lic. 00980828

Sarah Phillips

Vice President

Sarah.Phillips@cbre.com

213.613.3664

Lic. 02248393

CBRE



Space Highlights

Premises: Floors 22, 25-26 & Partial 23rd

Availability: Immediate

Total Size: Floor 26: 25,531 RSF
Floors 25: 25,531 RSF
Partial 23rd Floor: 13,236 RSF
Floor 22: 25,531 RSF

Asking Rate: Negotiable

Available Size: 13,236 - 89,829 RSF

Furniture: Negotiable

Parking: 1/1,000

Sublease Term: Through August 31, 2032

Space Features:

- Fully built-out, move-in ready space
- Dedicated client-facing floor (25th) featuring client lounge, board room, multiple conference rooms, executive zoom room, and catering pantry
- Perimeter private offices throughout
- Robust conferencing infrastructure across all floors including training/presentation room
- Collaboration rooms on multiple floors
- Dedicated back-of-house floor (22nd) with server room, IT shipping, NOC storage, records room, reprographics service center
- 3 reception areas
- Upper block (Floors 25 & 26) connected via internal staircase



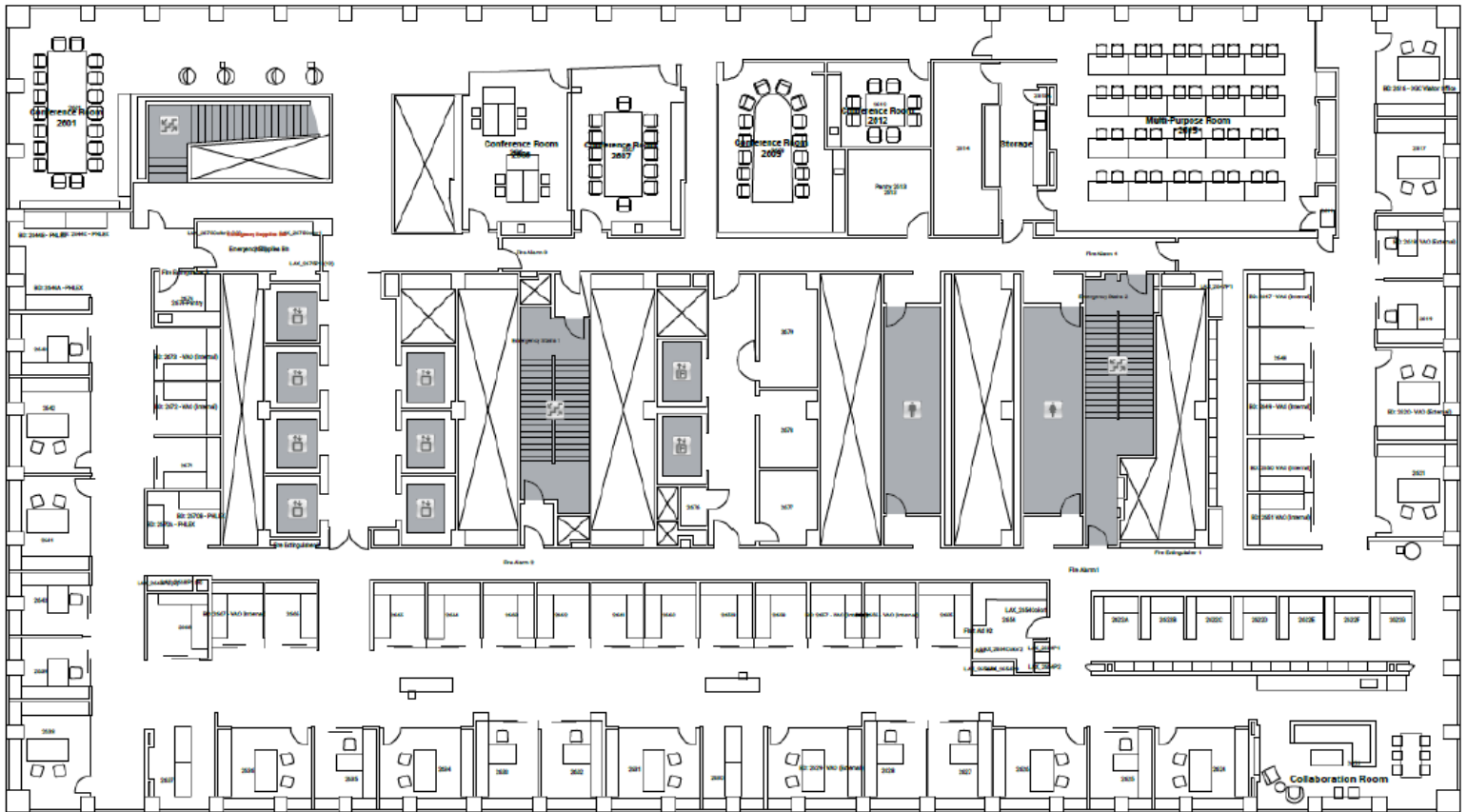
Building Highlights

- On-site conferencing facility
- Drago restaurant on-site
- Outdoor Tenant Plaza featuring Nice Coffee Bar
- 505 Flower retail plaza (subterranean; 15 eateries and service providers)
- Efficient floor plate

Floor Plan

26th Floor – 25,531 RSF

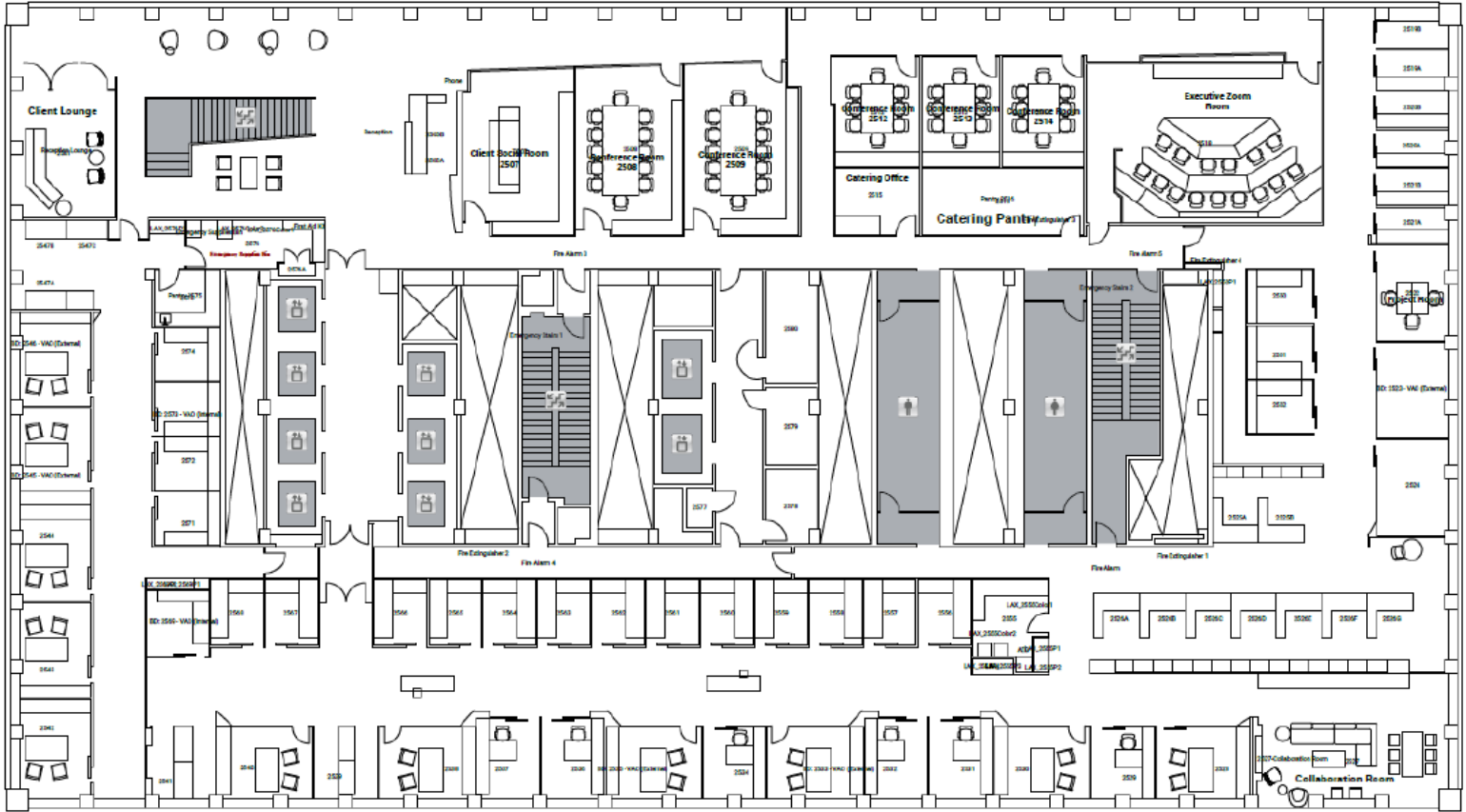
- Multiple conference rooms
- Large training/presentation room
- Collaboration room
- Perimeter private offices



Floor Plan

25th Floor – 25,531 RSF

- Client lounge & board room
- Multiple conference rooms & executive zoom room
- Catering office & pantry
- Collaboration room
- Perimeter private offices



Floor Plan

22nd Floor – 25,531 RSF

- 3 reception areas
- Conference room & meeting room
- Server room, IT shipping & NOC storage
- Records room & reprographics service center









515 South Flower Street

For Further Information, Contact:

Clay Hammerstein

Vice Chairman

Clay.Hammerstein@cbre.com

213.613.3055

Lic. 00980828

Sarah Phillips

Vice President

Sarah.Phillips@cbre.com

213.613.3664

Lic. 02248393

© 2026 CBRE, Inc. All rights reserved. This information has been obtained from sources believed reliable, but has not been verified for accuracy or completeness. You should conduct a careful, independent investigation of the property and verify all information. Any reliance on this information is solely at your own risk. CBRE and the CBRE logo are service marks of CBRE, Inc. All other marks displayed on this document are the property of their respective owners, and the use of such logos does not imply any affiliation with or endorsement of CBRE. Photos herein are the property of their respective owners. Use of these images without the express written consent of the owner is prohibited.

CBRE

www.cbre.com