

MIDWAY DISTRIBUTION CENTER

MINNEAPOLIS
ST. PAUL

2085 Ellis Ave
St. Paul, MNe



FOR LEASE

100,177 SF



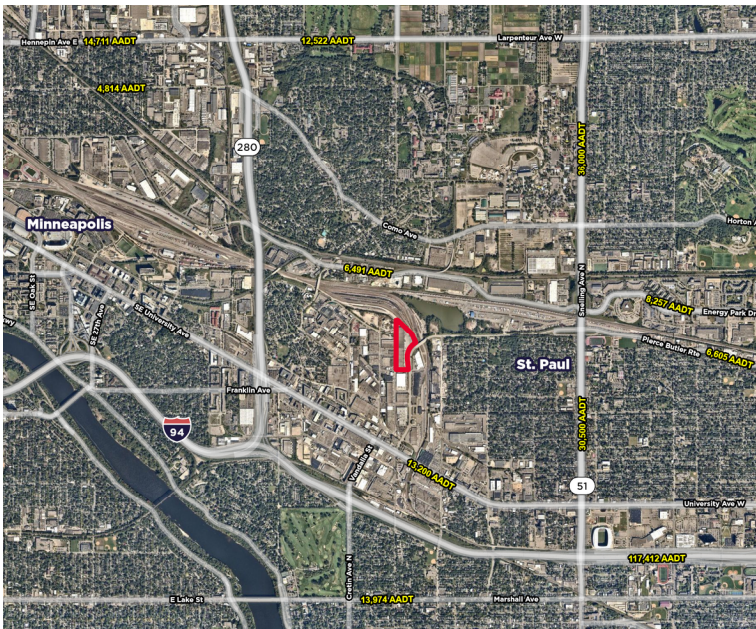
LEASED BY





PROPERTY HIGHLIGHTS

Location	2085 Ellis Ave, St. Paul, MN
Building Size	260,170 SF
Year Built	1976
Available SF	2,117 SF Office (est) 98,060 SF Warehouse (est) 100,177 SF Total
Clear Height	28'



Loading	9 Dock Doors 1 Drive-In
Parking	Ample
Lease Rate	Negotiable
2026 Est. CAM + Tax	\$4.16 PSF Total

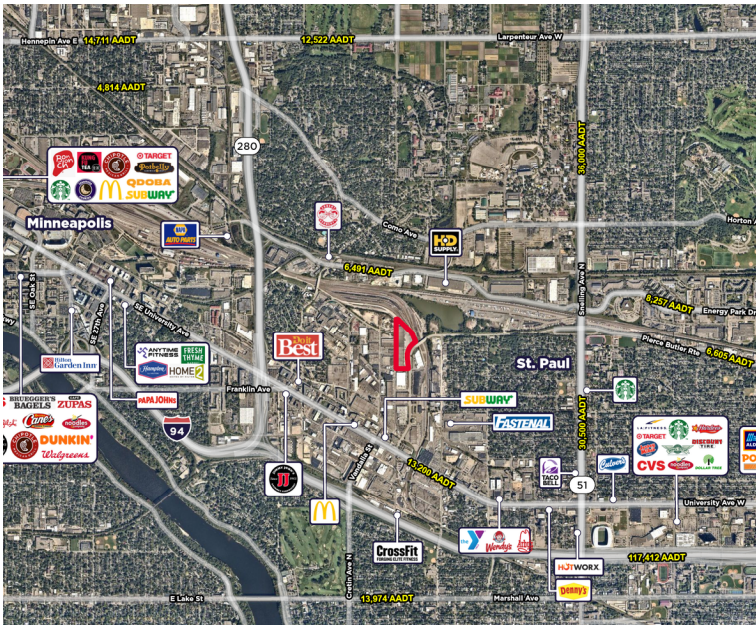
Most central warehouse location in the Twin Cities

Trailer Parking

Racking available for sale

Great access to I-94 & Hwy 28

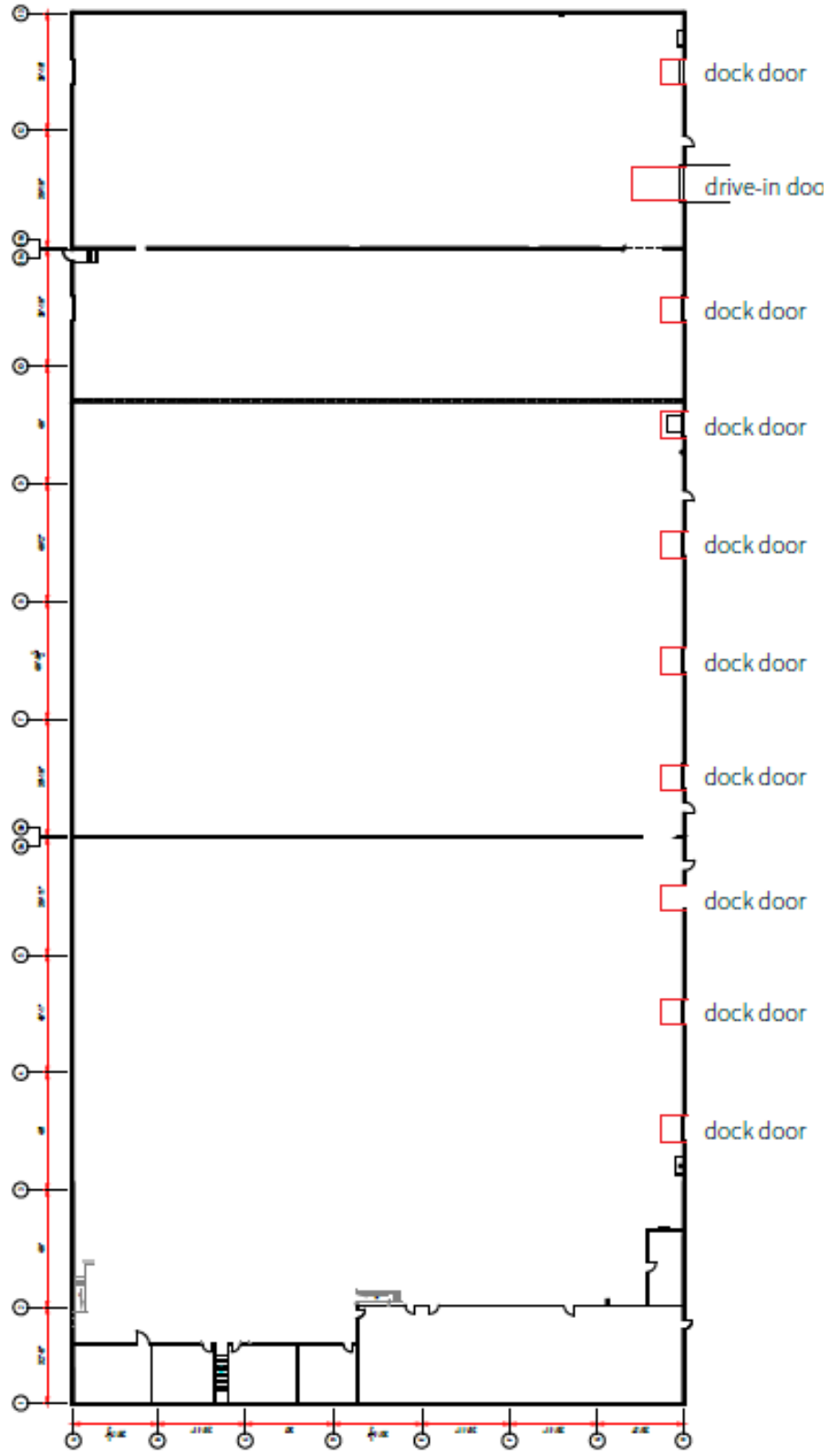
High bay efficient warehouse



FOR LEASE

±100,177 SF

Suite 2085
2,117 SF office (est.)
98,060 SF warehouse (est.)
100,177 SF total
(9) dock doors
(1) drive-in door



CONTACT INFORMATION

2085 Ellis Ave
St. Paul, MN

Todd Hanson

todd.hanson@cushwake.com
952 820 8737

Jason Sell

jason.sell@cushwake.com
952 837 8515

Jordan Dick

jordan.dick@cushwake.com
952 204 7631

Stella Dolan

stella.dolan@cushwake.com
952 893 8823

This document is for informational purposes only and does not constitute an offer or acceptance of a lease. Any lease agreement must be in writing and signed by the landlord. No representations or warranties are made except as expressly stated in a signed lease. Information is provided "as is" and may be subject to errors or change without notice.



LEASED BY

