

25 Soho Square

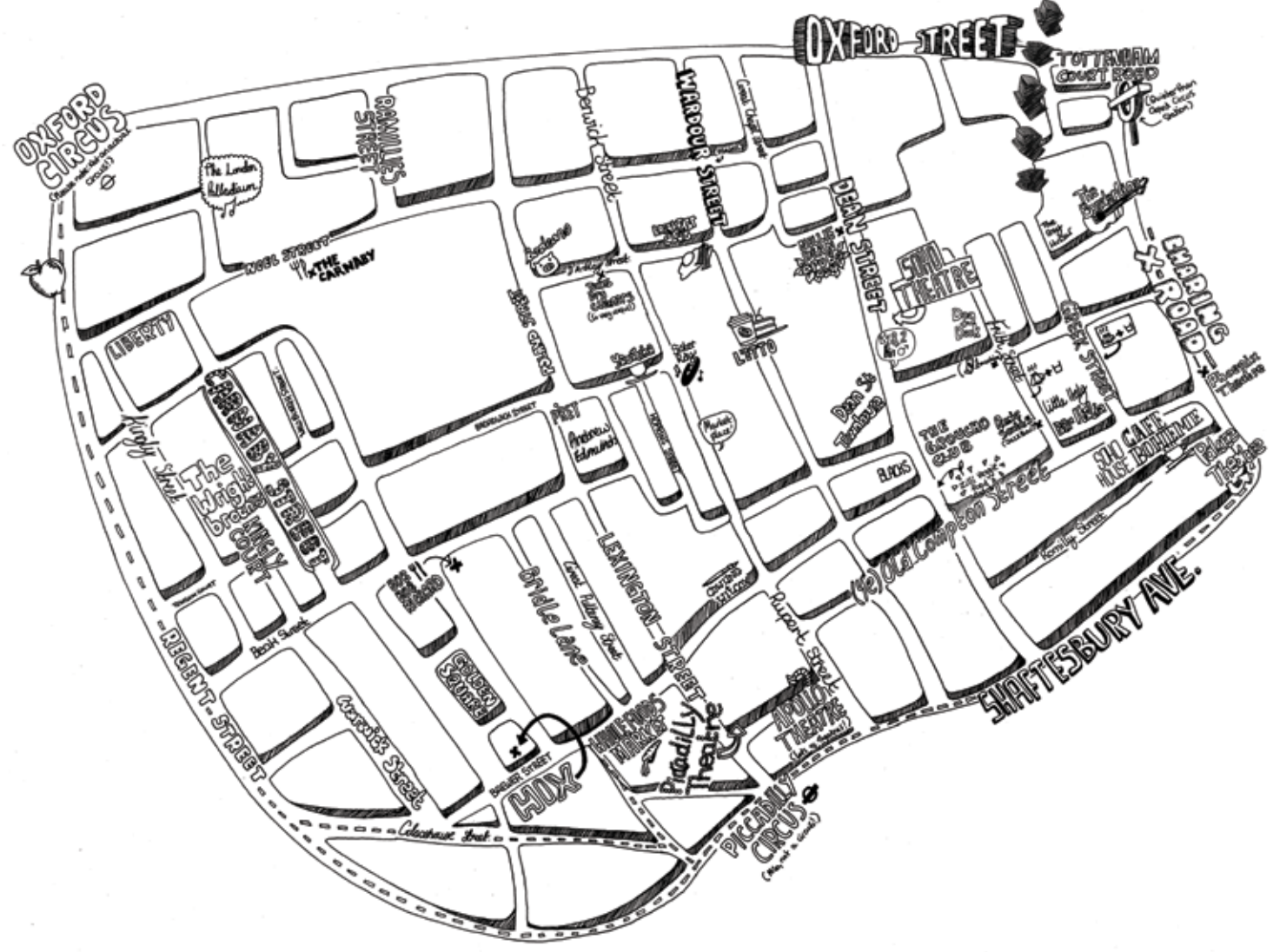
Third floor 489.5 sq m / 5,269 sq ft

*Designed by award winning architects  
Buckley Grey Yeoman.*





# 25 Soho Square



SOHO. SOHO. SOHO.  
 Pause. Take a look around. You will experience  
 one square mile of unadulterated pleasure.





*...sublime shopping, beautiful old buildings, interesting alleyways and great places to eat...*



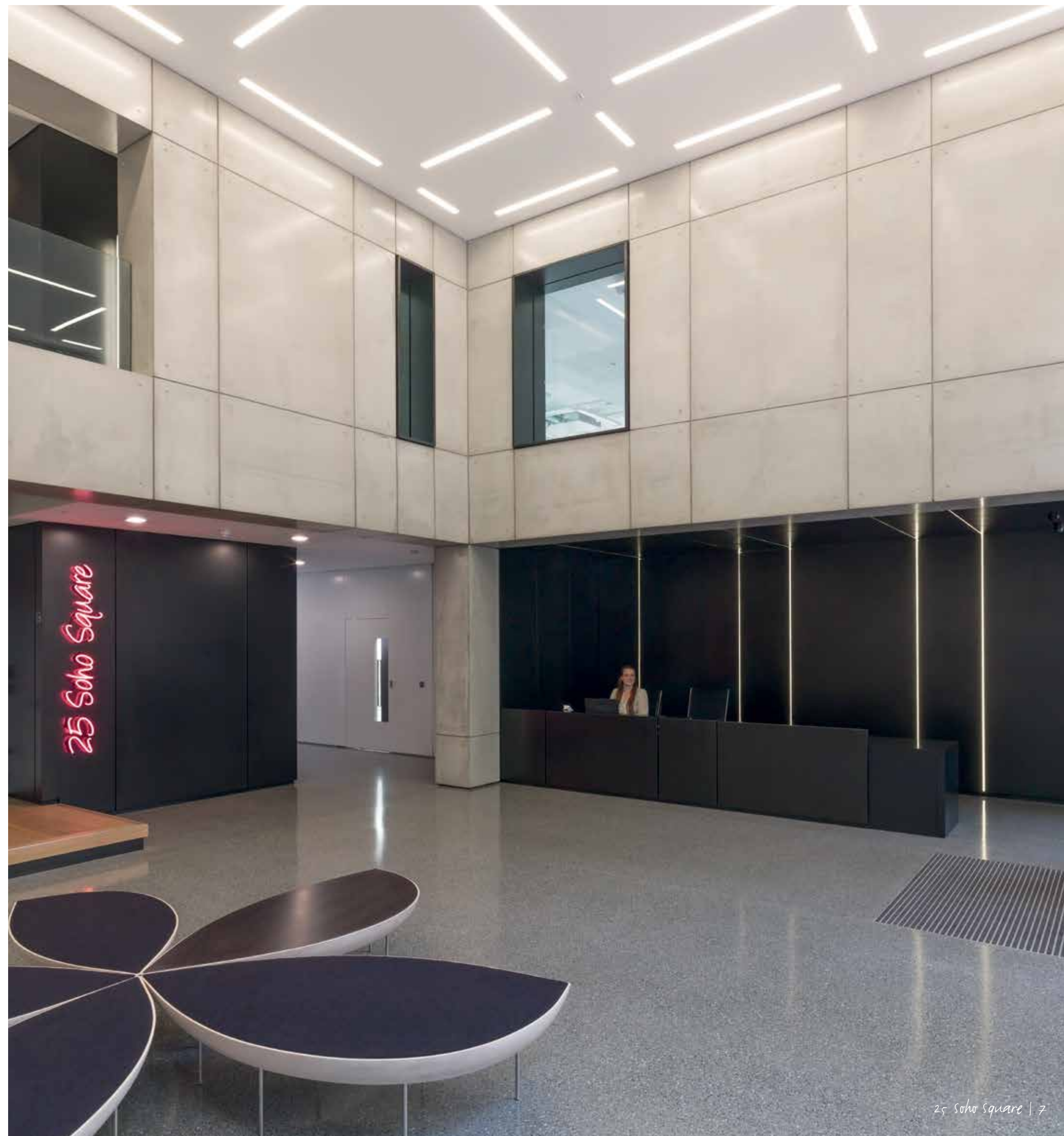
*...with creativity at its heart.*



The double height reception area sets the tone for this landmark in soho square. A carefully selected palette of materials reflects the simplicity of the architecture within. Occupiers in the building include; 21st Century Fox, Leisure Pass, Bow & Arrow and Palantir.

**Availability**

Floor	sq m	sq ft
Third floor	489.5	5,269





*Wrought iron, concrete and exposed air-conditioning make a statement. Cool, calm and collected against the energy outside.*



Indicative photograph

25 Soho Square | 13



Indicative photograph

25 Soho Square | 15





Indicative photograph



Indicative photograph

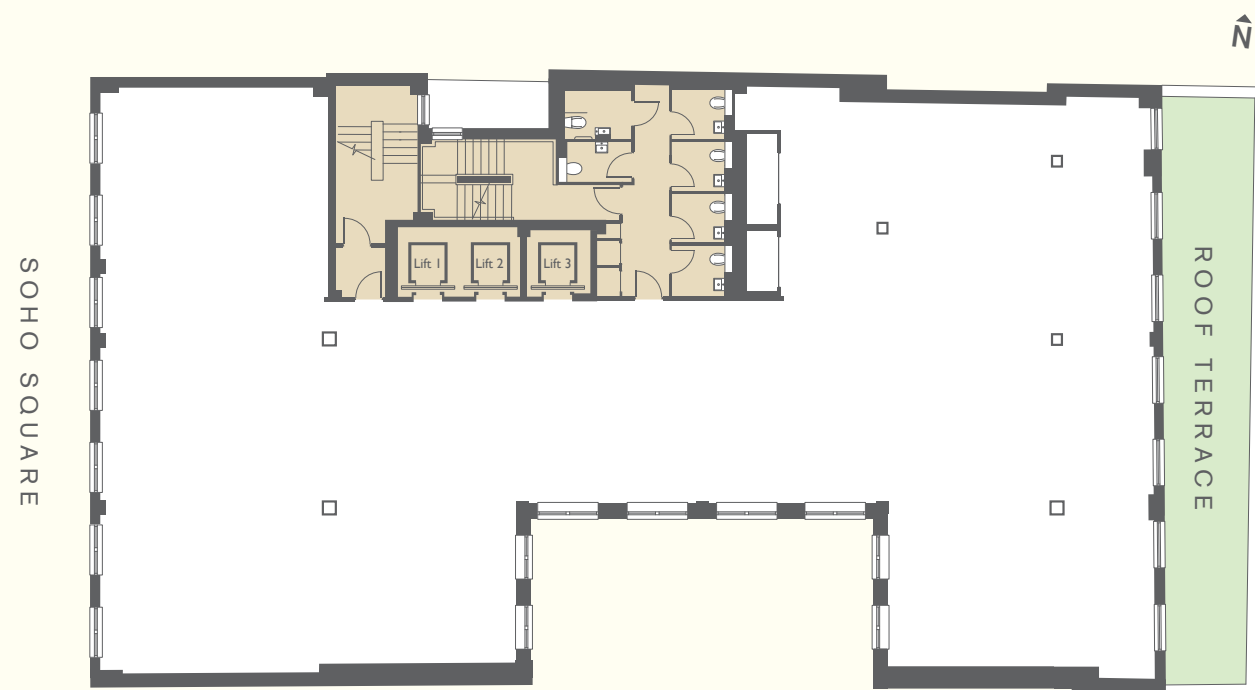




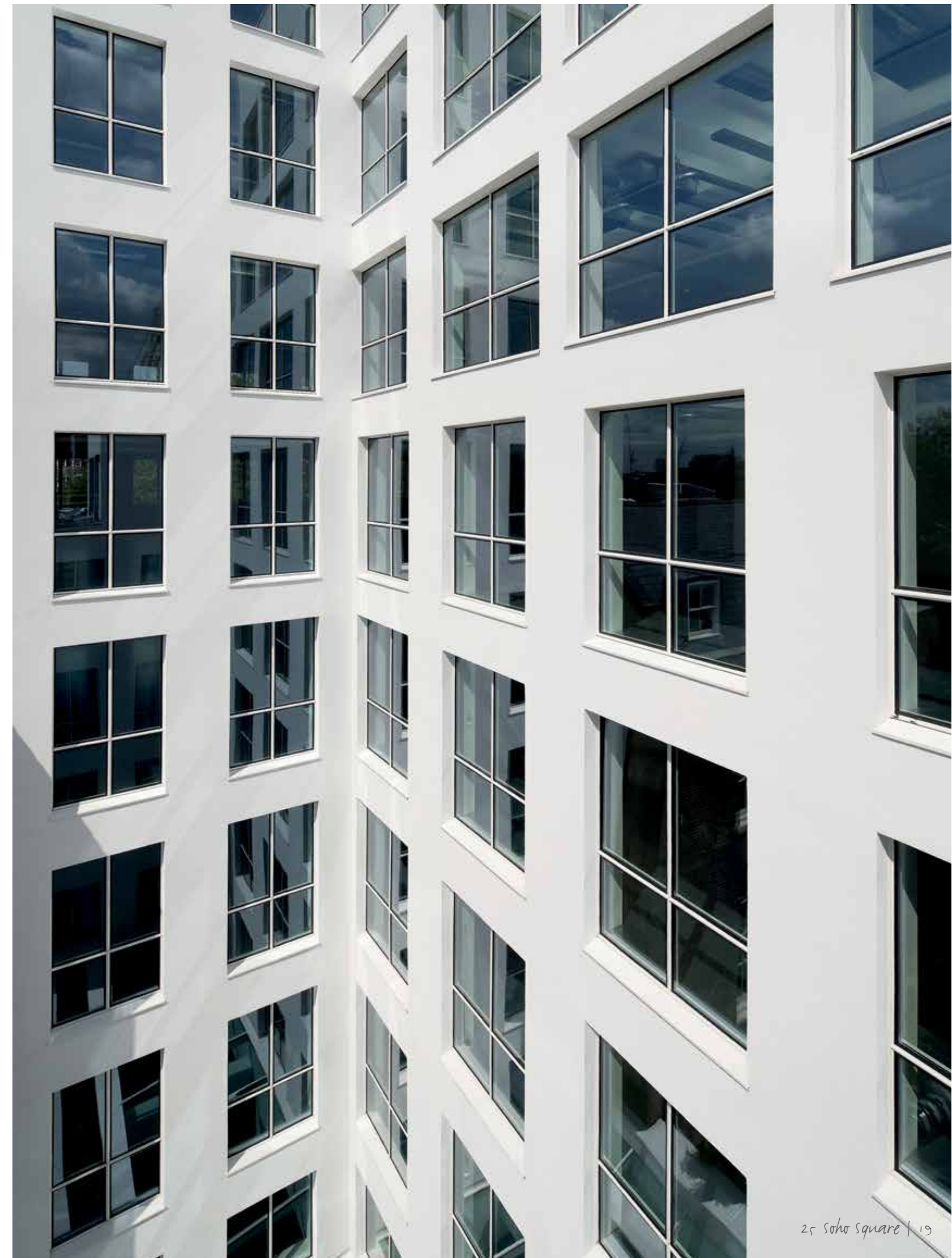
## Specification

- Metal raised floors
- Galvanised exposed metal services
- Fan coil VRF air conditioning
- Roof terrace
- BREEAM 'excellent' rating
- 3 x eight person passenger lifts
- Demised WCs
- 40 bike spaces
- Showers in basement

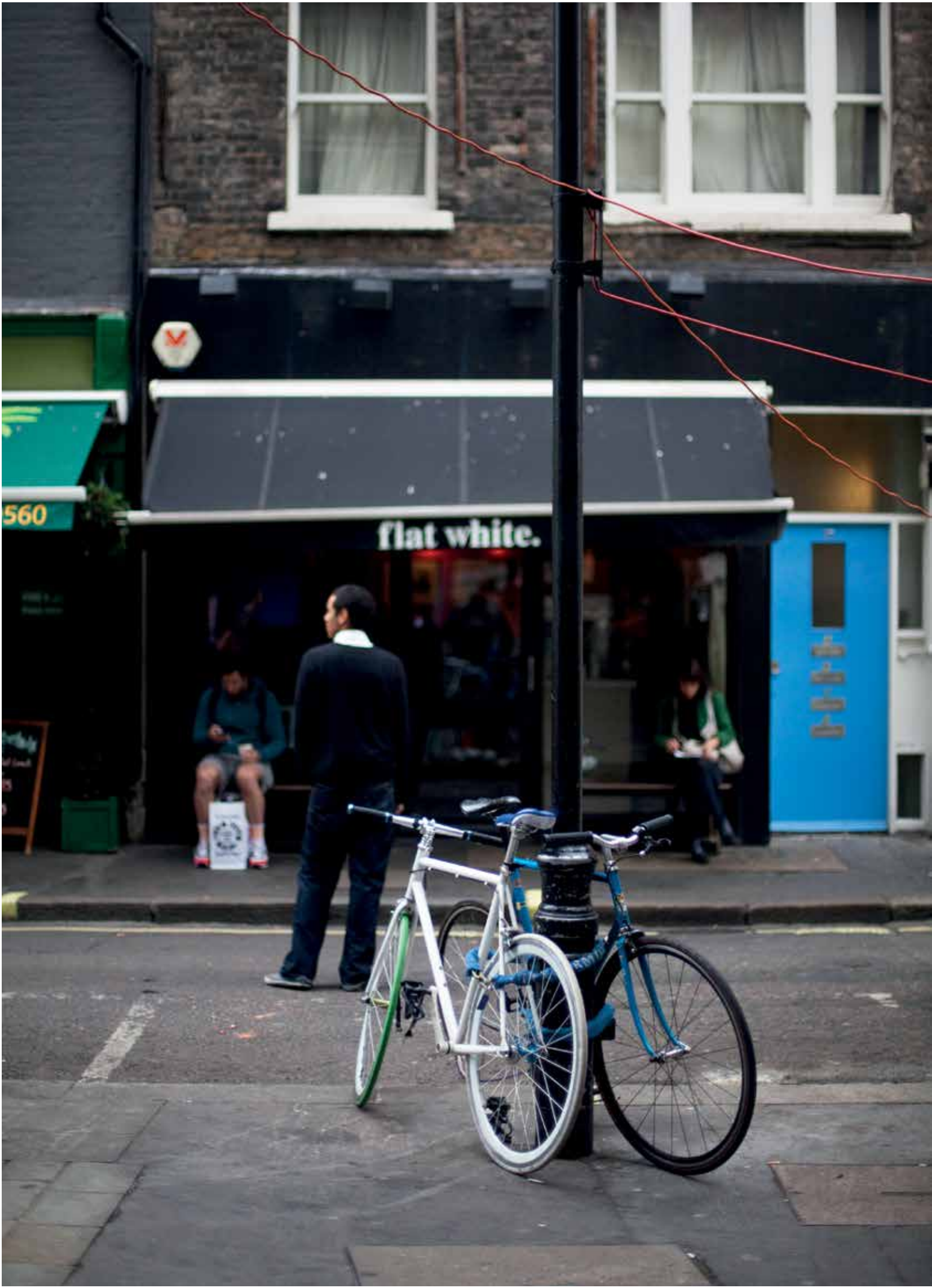
Third floor  
489.5 sq m  
5,269 sq ft



Plans not to scale. For indicative purposes only.







Contact

BLUEBOOK

Joe Fuller  
joe@bluebooklondon.co.uk  
020 7167 6401  
  
Isobel Ewart  
isobel@bluebooklondon.co.uk  
020 7167 6403

CBRE

Matt Chicken  
matt.chicken@cbre.com  
020 7182 2023  
  
Rosie Oulton  
rosie.oulton@cbre.com  
020 7182 2799

[www.25sohosquare.com](http://www.25sohosquare.com)



CBRE for themselves and for the vendors or lessors of this property whose agents they are give notice that: (1) the particulars are set out as a general outline only for the guidance of intending purchasers or lessees, and do not constitute part of, an offer or contract; (2) all descriptions, dimensions, references to condition and necessary permissions for use and occupation, and other details are given in good faith and are believed to be correct, but any intending purchasers or tenants should not rely on them as statements or representations of fact but satisfy themselves by inspection or otherwise as to the correctness of each of them; (3) no person in the employment of CBRE Limited has any authority to make or give representation or warranty whatever in relation to this property, October 2018.

Produced by Bandstand 2018 BS3583



[www.25sohosquare.com](http://www.25sohosquare.com)