

Moor House, 120 London Wall

London EC2

savills

20,261 sq ft (1,882.3 sq m)

savills.co.uk

Location

Moor House occupies a prime island site on the north side of London Wall at its junction with Moorgate.

The building is well served by mainline rail and underground services at Moorgate, Liverpool Street and Bank stations.

Description

Moor House is one of the most prominent and high profile landmark buildings in the City of London. Designed by the internationally renowned Foster & Partners, the building was completed in 2005 and comprises approximately 327,400 sq ft (30,413 sq m) of Grade A accommodation arranged over basement, lower ground, ground and 16 upper floors.

Specification

- 4 pipe fan coil air conditioning
- 5 x 21 person passenger lifts serve the lower floors
- 1 x 2,000 kg goods lift and 2 fireman's lifts
- 150 mm raised floor
- Floor to ceiling height of 2.775m
- 2 x 2 MVA (HV) generators and 1 x 1.5 MVA (LV) generator powered by green energy

Accommodation

Floor	Area (sq. ft)	Area (sq.m)
5 th	20,261	1,882.3
Total	20,261	1,882.3

These areas are approximate and are subject to on site measurement.

Viewing – strictly by appointment through

Stuart Lawson
Savills
020 7409 8920
slawson@savills.com

Josh Lamb
Savills
020 7409 8891
jlamb@savills.com

Or our joint agents, CBRE



Lease

New lease direct from the Landlord for a term by arrangement.

Quoting rent

On application

VAT

The property is **NOT** elected for VAT

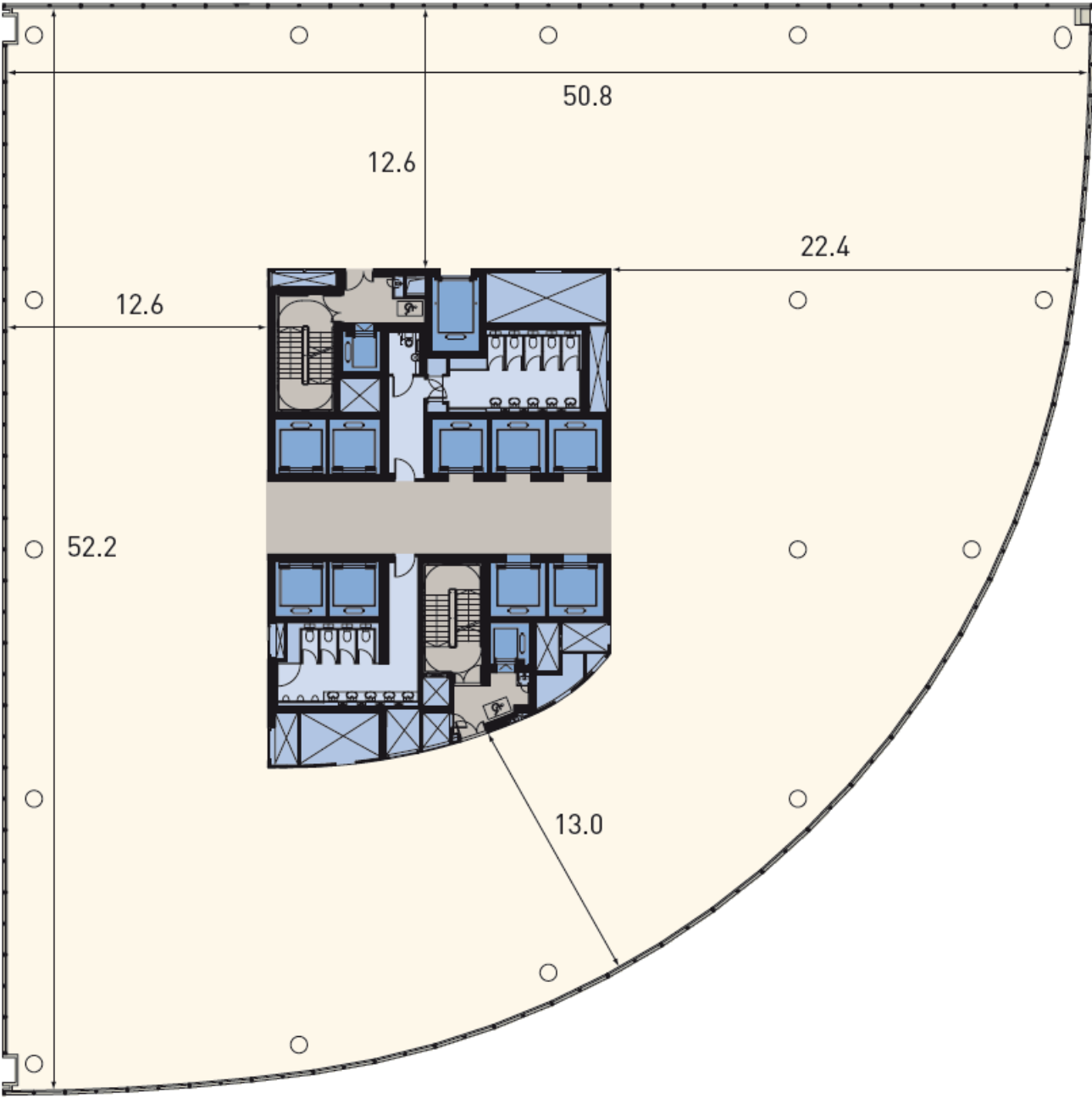
Rates

TBC

Service Charge

TBC

Typical lower floor



Important Notice: Savills, their clients and any joint agents give notice that:
1. They are not authorised to make or give any representations or warranties in relation to the property either here or elsewhere, either on their own behalf or on behalf of their client or otherwise. They assume no responsibility for any statement that may be made in these particulars. These particulars do not form part of any offer or contract and must not be relied upon as statements or representations of fact.
2. Any areas, measurements or distances are approximate. The text, photographs and plans are for guidance only and are not necessarily comprehensive. It should not be assumed that the property has all necessary planning, building regulation or other consents and Savills have not tested any services, equipment or facilities. Purchasers must satisfy themselves by inspection or otherwise.