

COMPASS COMMERCIAL

FOR LEASE



18504 Bothell Way NE, Bothell, WA 98011





## Key Details

Status: AVAILABLE FOR LEASE

MLS Type: Commercial

Rate: \$32 - \$35/psf + NNN

Year Built: 1954

Building Size: 6,713 SF

Parcels: 0726059180, 0626059031,

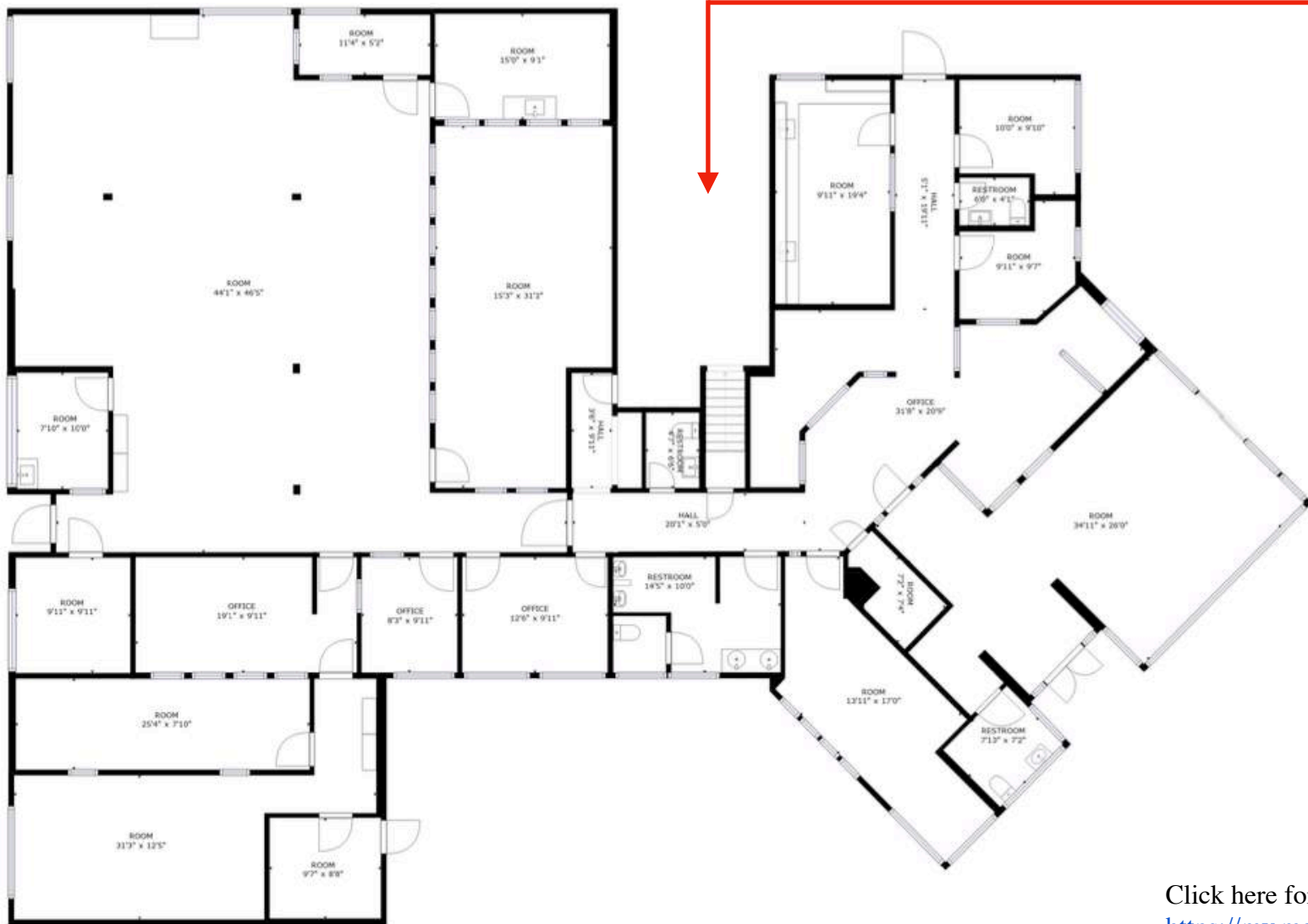
0970000055, 0970000010

Lot Size: 0.505 Acres / 21,997 SF

County: King County







Click here for a 3D Tour:  
<https://my.matterport.com/show/?m=GH7DjiKRH3y&mls=1>

# Freestanding Office/Medical

Freestanding Office/Medical building in the heart of Downtown Bothell available for lease. This spectacular corner lot building has excellent visibility and proximity in Downtown Bothell. Perfect for day care, dental, medical, office, church. Currently used for pediatric therapy and hand therapy. Current improvements include beautiful lobby, reception area, 15 private office/therapy/exam/rooms, open indoor play area, large conference/open office area, large second floor kitchen/breakroom. Approximately 7000 SF building with plenty of parking. Minutes to UW Bothell, Bothell High School, Hwy 522, and 405, surrounded by restaurants, shopping, parks and more.



**Christina Chong**

Managing Broker

M: 206.551.5909

[christina.chong@compass.com](mailto:christina.chong@compass.com)



Compass is a licensed real estate broker. All material is intended for informational purposes only and is compiled from sources deemed reliable but is subject to errors, omissions, changes in price, condition, sale, or withdrawal without notice. No statement is made as to the accuracy of any description or measurements (including square footage). This is not intended to solicit property already listed. No financial or legal advice provided. Equal Housing Opportunity. Photos may be virtually staged or digitally enhanced and may not reflect actual property conditions.