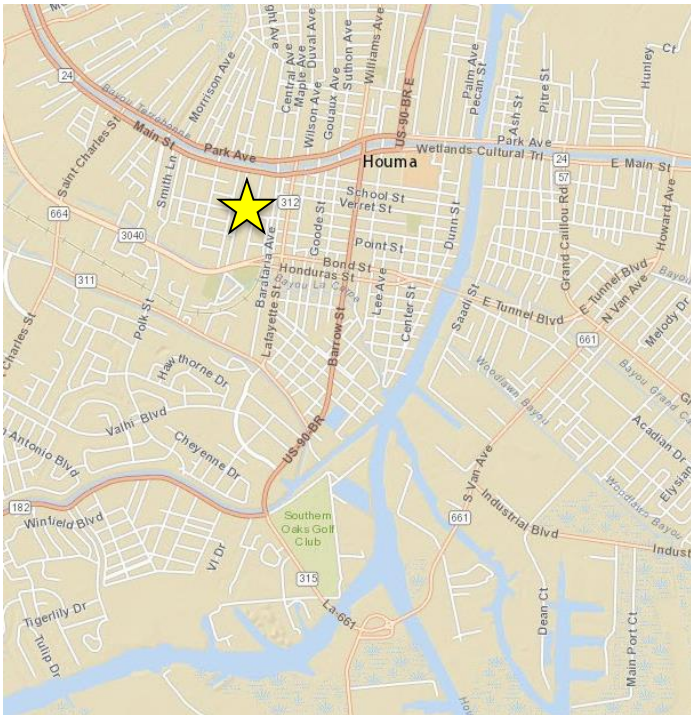


For Sale  
Approx. 42,000 SF Lot Available  
for Commercial / Residential Use



## Lot 1, Block 1, Menville Sub. Houma, LA 70360

- Residential lot parcel available for sale in Houma-Located in Menville Subdivision, off of Main St.
- Lot is perpendicular with Bayou Terrebonne
- Lot is located in close relation to main traffic corridors, Highways 3040 and 24
- Within a 5 minute drive to US Post Office, schools, commercial shopping centers and restaurants

For more information, contact

**Betty Sun**  
504.569.9482  
betty@latterblum.com

**Eli Gunesebakan**  
504.569.9486  
elig@latterblum.com

**NAI**Latter & Blum

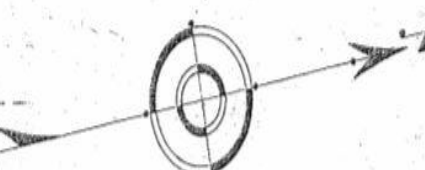
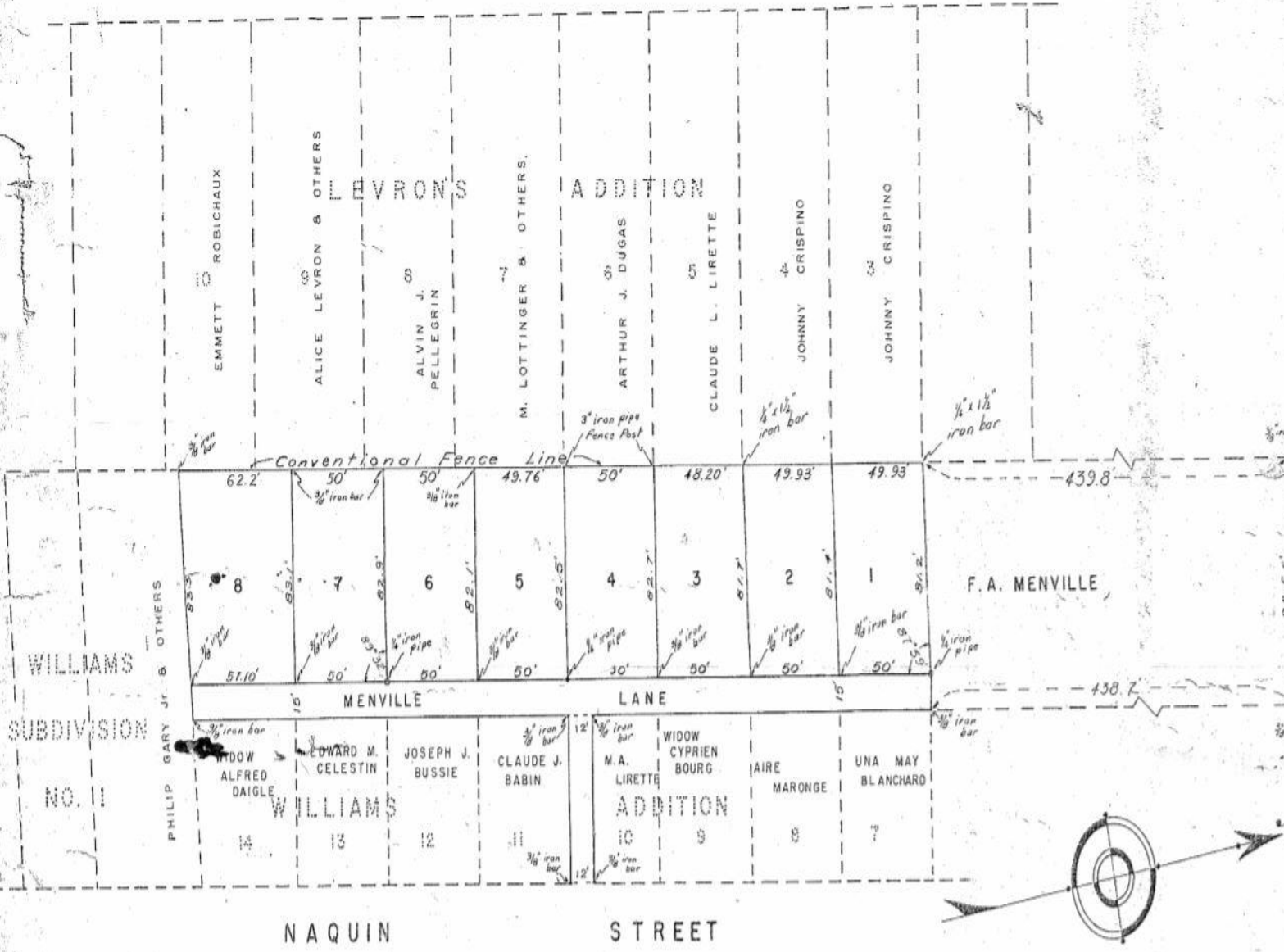
430 Notre Dame Street  
New Orleans, LA 70130 USA  
504.569.9300  
[www.latterblum.com](http://www.latterblum.com)

For Sale  
Lot 1, Block 1, Menville Sub.  
Houma, LA 70360



For Sale  
 Lot 1, Block 1, Menville Sub.  
 Houma, LA 70360

LEVRON STREET



DESCRIPTION OF PROPERTY SUBDIVIDED  
 certain tract of land situated in the  
 Parish of Terrebonne, Louisiana on  
 the descending bank of Bayou Terrebonne,  
 on the East by Williams Addition, on the  
 West by Lot 1, Block A of Williams Subdivision No. 1,  
 on the South by Levron's Addition and on the North  
 by F. A. Menville

I hereby certify that this plat is  
 in accordance with the provisions of Act No. 51  
 of the 1930 session of the Legislature of  
 Louisiana and I hereby approve the same.

*Bernard B. Davis*  
 Civil Engineer

MENVILLE SUBDIVISION

BEING A SUBDIVISION OF PROPERTY  
 BELONGING TO F. A. MENVILLE.

LOCATED IN SECTION 6, T17S, R17E

SCALE - 1" = 40'