

115 Seventh Avenue

@ 17th Street, NYC



OPPORTUNITY

Available Q1 2010

Ground: **±3,926 SF**

±2,835 SF Basement

TOTAL FRONTAGE

±53' of frontage along 7th Avenue

TRANSPORTATION:

1 | 1 block | 18th Street

INFORMATION

- Directly adjacent to Barneys New York's Chelsea Flagship Store
- Join SOSA, an innovator's community established for the startup ecosystem, on floors 2-7
- Central to Manhattan's most exclusive residential buildings and retail stores
- An opportunity for your flagship store to shine in the heart of Chelsea, New York City's fastest growing neighborhood.
- Surrounded by world-class furniture and clothing stores, people from around the World will make this their destination for luxury shopping.
- An elegant, brand new exterior facade will show off your brand like never before.

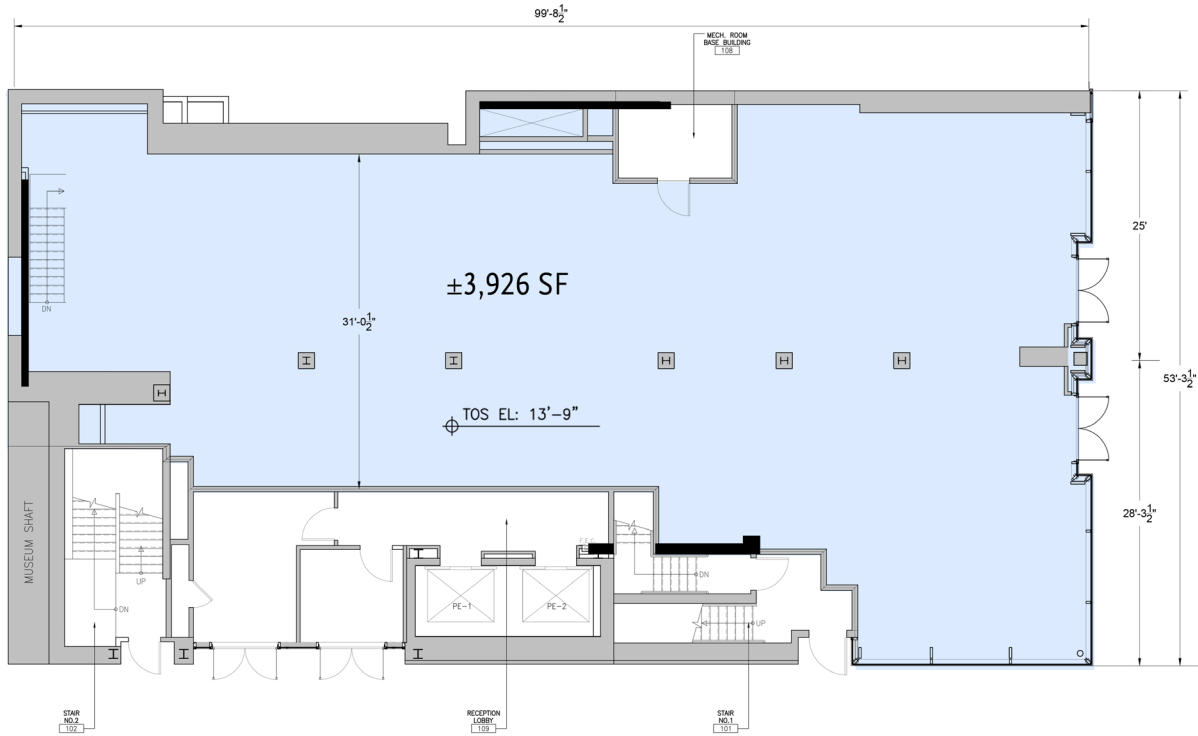
115 Seventh Avenue

@ 17th Street, NYC



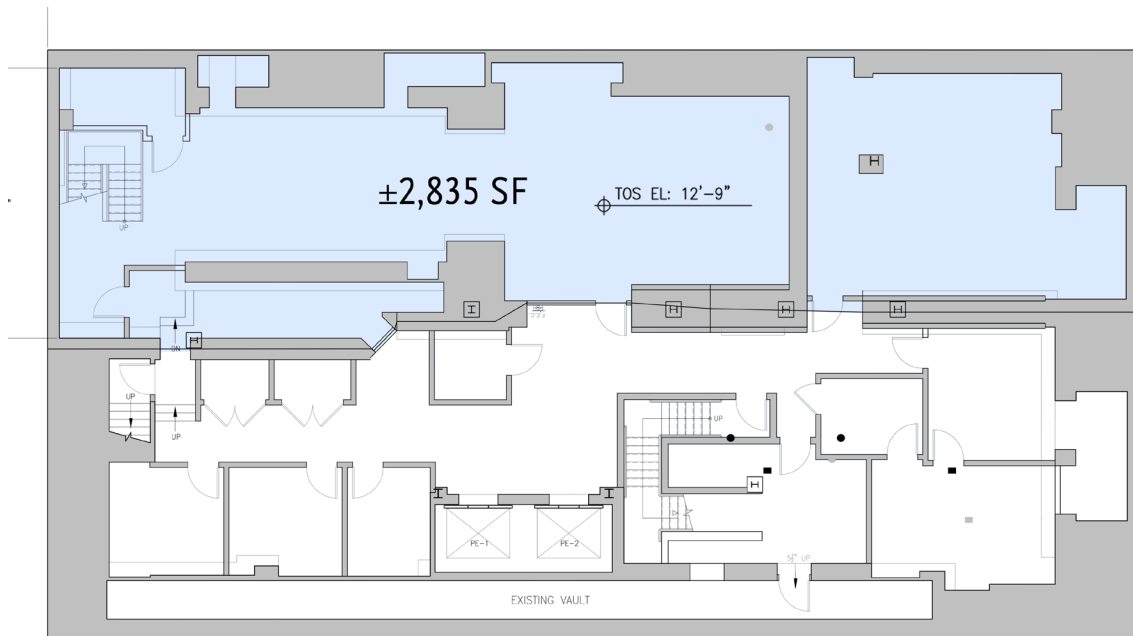
115 Seventh Avenue

@ 17th Street, NYC



SEVENTH AVENUE

GROUND FLOOR WEST 17TH STREET



LOWER LEVEL

115 Seventh Avenue

@ 17th Street, NYC

FOR MORE INFORMATION PLEASE CONTACT:

Byron Appel

bappel@aacrealty.com

• 646-214-0254

Daniel Iwanicki

diwanicki@aacrealty.com

• 646-214-0251

Gabby Semet

gsemet@aacrealty.com

• 917-831-3192