

For Lease

5950 Key Ct, Loomis, CA 95650



PROPERTY HIGHLIGHTS

- ±6,200 RSF Total Footprint
- ±1,200 RSF office space
- Sprinklered
- Concrete tilt-up construction
- 4 12' x 14' grade level doors
- 18' clear height
- 200 amps / 110/208v 3 phase power
- Built in 2005
- Zoned IL- Light Industrial- Town of Loomis
- Rental Rate: \$1.10 NNN

Sean Merold, SIOR
Managing Director
RE License # 01803204
T +1 916 491 4313
sean.merold@jll.com

Mike Zimmerman, SIOR
Managing Director
RE License # 01514055
T +1 916 491 4312
mike.zimmerman@jll.com

Mike Metzger
Executive Vice President
RE License # 01902110
T +1 916 440 1830
mike.metzger@jll.com

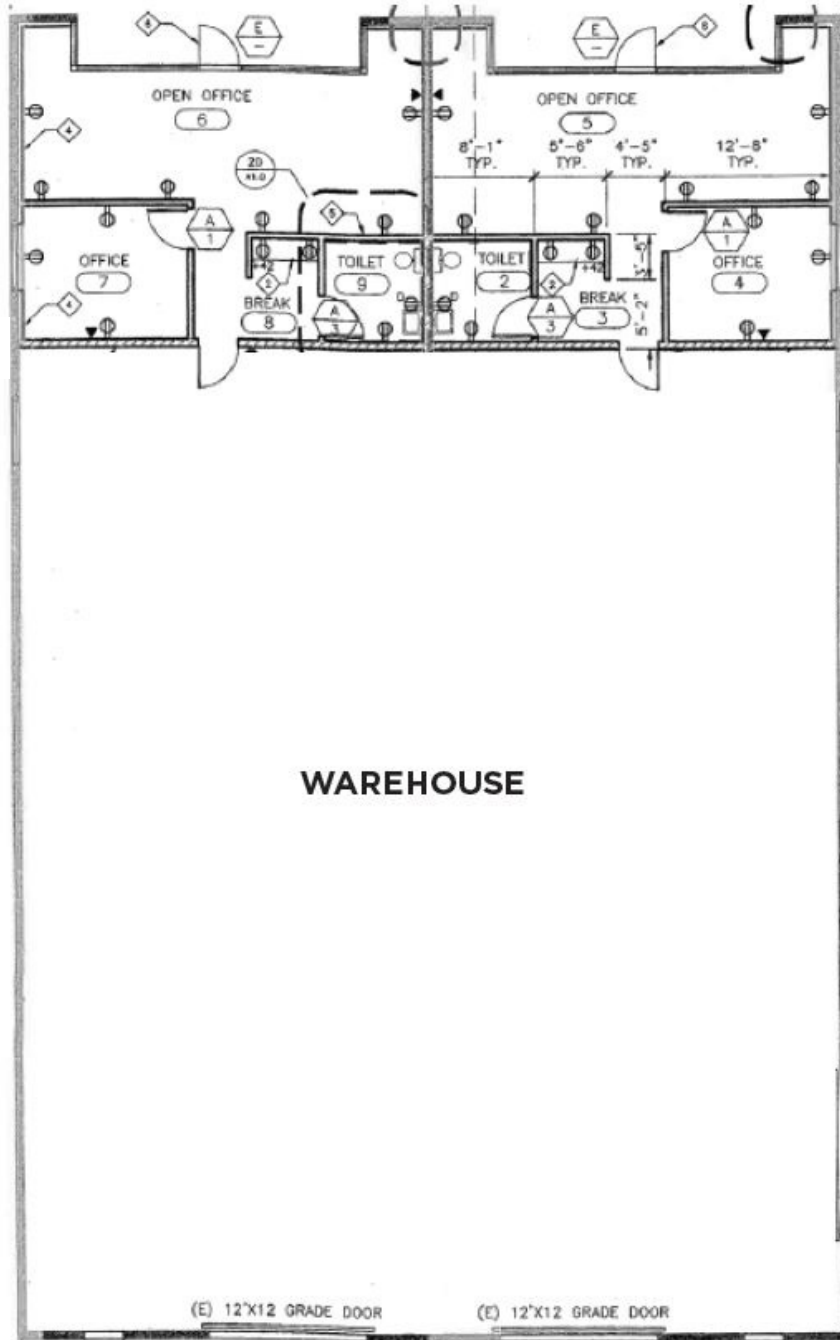


©2023, Jones Lang LaSalle IP, Inc. All rights reserved. Jones Lang LaSalle Brokerage, Inc. Real Estate License #01856260

For Lease

5950 Key Ct, Loomis, CA 95650

SITE PLAN



Sean Merold, SIOR
Managing Director
RE License # 01803204
T +1 916 491 4313
sean.merold@jll.com

Mike Zimmerman, SIOR
Managing Director
RE License # 01514055
T +1 916 491 4312
mike.zimmerman@jll.com

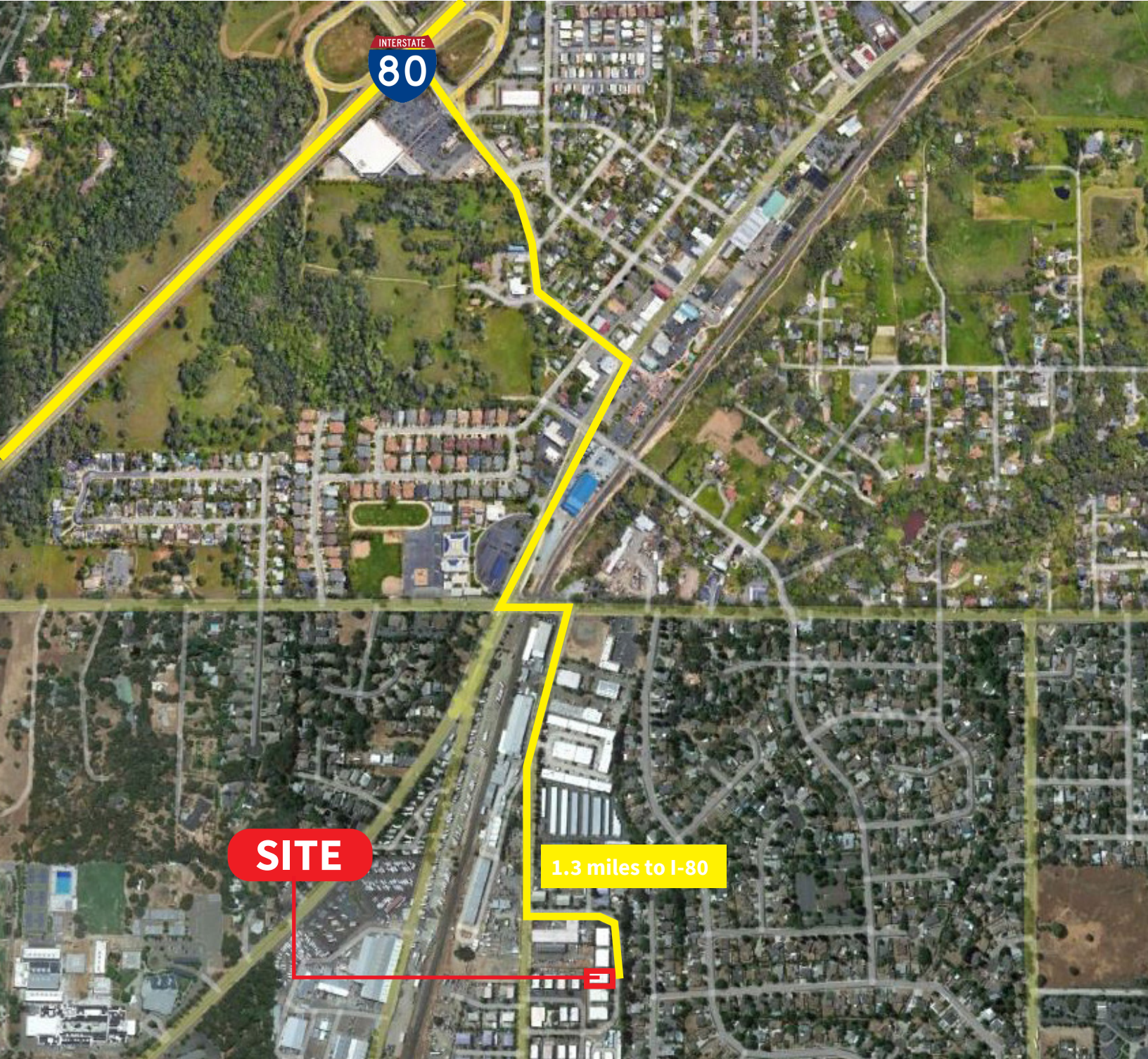
Mike Metzger
Executive Vice President
RE License # 01902110
T +1 916 440 1830
mike.metzger@jll.com



©2023. Jones Lang LaSalle IP, Inc. All rights reserved. Jones Lang LaSalle Brokerage, Inc. Real Estate License #01856260

For Lease

5950 Key Ct, Loomis, CA 95650



Sean Merold, SIOR
Managing Director
RE License # 01803204
T +1 916 491 4313
sean.merold@jll.com

Mike Zimmerman, SIOR
Managing Director
RE License # 01514055
T +1 916 491 4312
mike.zimmerman@jll.com

Mike Metzger
Executive Vice President
RE License # 01902110
T +1 916 440 1830
mike.metzger@jll.com



©2023. Jones Lang LaSalle IP, Inc. All rights reserved. Jones
Lang LaSalle Brokerage, Inc. Real Estate License #01856260