



# ±10,340 SF FLEX BUILDING LESS THAN 500 FT FROM WOODRUFF RD



LEE & ASSOCIATES  
GREENVILLE/SPARTANBURG

**Randall Bentley, SIOR, CCIM**  
President/Managing Principal  
864.444.2842  
rbentley@lee-associates.com

**Micah Williams**  
Senior Associate  
864.477.0455  
mwilliams@lee-associates.com


**864.704.1040**  
LeeUpstate.com


**Lease Rate:**  
**Call For Pricing**

- Signage on Woodruff Rd included in lease (±34,300 AADT)
- ±8,340 SF Showroom/Office
- ±2,000 SF Warehouse

 **DOCK DOORS**  
2 (TWO)

 **HVAC**  
SHOWROOM 100%  
CONDITIONED

 **LOCATION**  
RIGHT OFF WOODRUFF ROAD, LESS THAN 500 FEET

 **I-85 & I-385**  
I-85 ±1.5 MILES  
I-385 ±1 MILE

# PROPERTY OVERVIEW & PHOTOS

PROPERTY NAME	10 Hendrix Drive
TYPE	Flex
TOTAL AVAILABLE SF	±10,340 SF
TOTAL BUILDING SF	±10,340 SF
TAX MAP #	0547030104205
COUNTY	Greenville
CITY LIMITS	No
ZONING	S-1
YEAR BUILT	1989
CONSTRUCTION TYPE	Metal
WAREHOUSE SF	±2,000 SF
SHOWROOM	±8,250 SF
CEILING HEIGHT	14'
DOCK DOORS	Two (2)
POWER	Two (2) 120-240v electrical panels



# LOCATION OVERVIEW



- 1 Quik Trip
- 2 Whataburger
- 3 7 Brew Coffee
- 4 Wal-Mart Supercenter
- 5 Shoppes at Woodruff
- 6 Zaxby's
- 7 Prisma Health
- 8 7-Eleven
- 9 Discount Tire

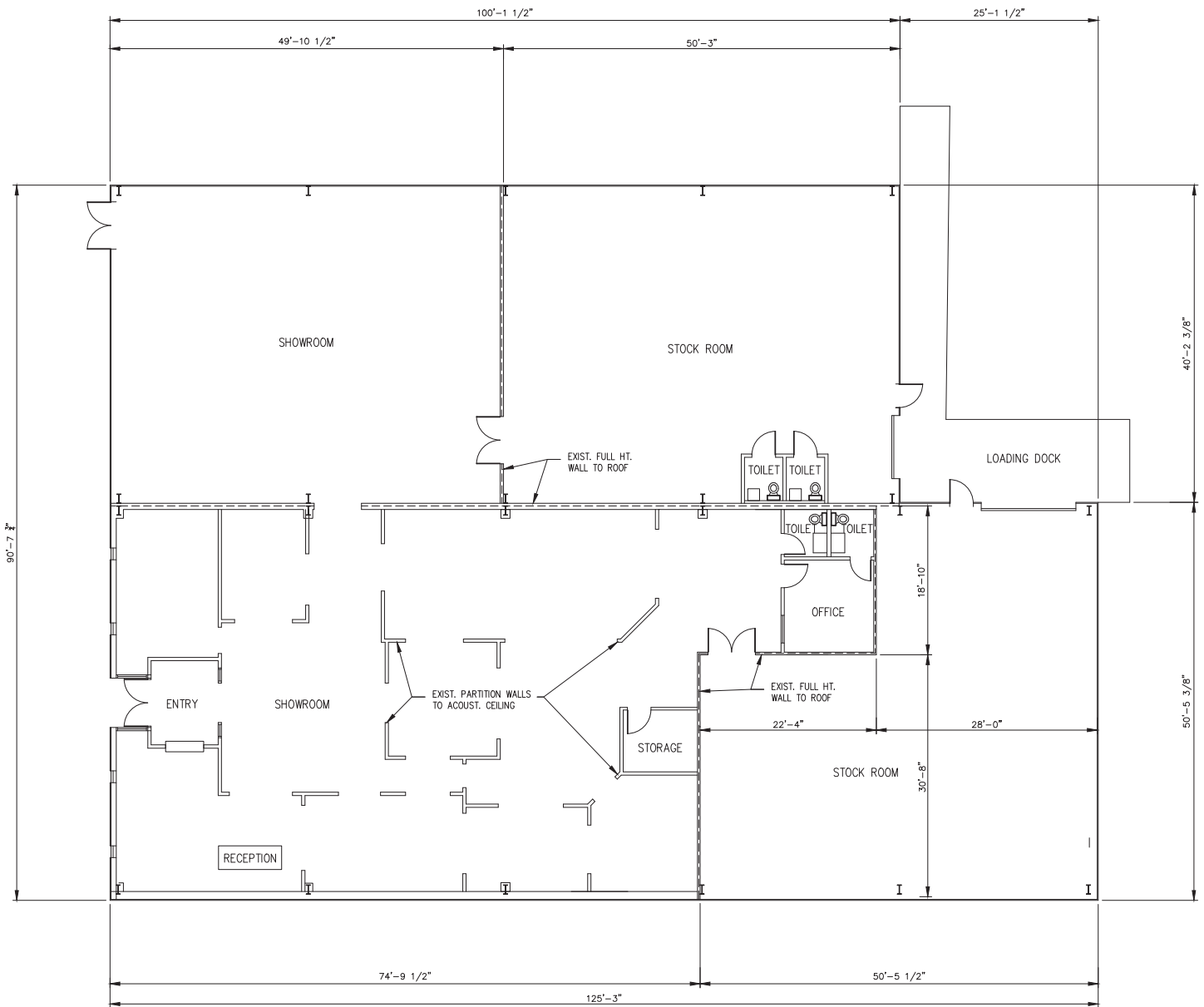
# PHOTOS



201 W. McBee Ave, Suite 400, Greenville, SC 29601  
320 E. Main Street, Suite 430, Spartanburg, SC 29302  
[LeeUpstate.com](http://LeeUpstate.com) | 864.704.1040



# FLOOR PLAN



TOTAL AREA - 10,340 SF

FLOOR PLAN

1/8" = 1'-0"





# LEARN MORE GIVE US A CALL



LEE & ASSOCIATES  
GREENVILLE/SPARTANBURG

**864.704.1040**  
**LeeUpstate.com**

**GREENVILLE OFFICE**  
201 W. McBee Ave, Suite 400  
Greenville, SC 29601

**SPARTANBURG OFFICE**  
320 E. Main Street, Suite 430  
Spartanburg, SC 29302

All information furnished regarding the properties and information in this packet is from sources deemed reliable, but no warranty or representation is made to the accuracy thereof and same is submitted to errors, omissions, change of price, rental or other conditions prior to sale, lease or financing or withdrawal without notice. No liability of any kind is to be imposed on the broker herein.



**Randall Bentley, SIOR, CCIM**  
President/ Managing Principal  
864.444.2842  
rbentley@lee-associates.com



**Micah Williams**  
Senior Associate  
864.477.0455  
mwilliams@lee-associates.com