

INDU STRY

RETAIL

Ground Floor	± 1,110 RSF
Mezzanine	± 465 RSF
TOTAL	± 1,575 RSF

5627 N FIGUEROA HIGHLAND PARK

FOR LEASE

INDUSTRYPARTNERS.COM

310 395 5151

CA BRE No. 01900833

ARAM POGOSIAN

ap@industrypartners.com

CA BRE No. 01816276

MAGUIRE PARSONS

mp@industrypartners.com

CA BRE No. 02047123

DAVID SCHNEIDER

schneider@analog-la.com

DRE No. 01981458

AVAILABLE SF

Ground Floor	± 1,110 RSF
Mezzanine	± 465 RSF
TOTAL	± 1,575 RSF

RATE

Upon Request

OCCUPANCY

December 15, 2019

TERM

5-10 Years

PARKING

1 space per tenant
 City parking directly
 behind building
 Street parking

Prime retail space on Figueroa in Highland Park

FEATURES

Built-out retail in between neighbors Highland Park Bowl and Civil Coffee, in the epicenter of the Figueroa retail corridor

Move-in ready with distributed HVAC, finished floors, and a built-out mezzanine perfect for office or storage uses

Architectural character with exposed brick facade and large windows.

Two blocks from Metro's Gold Line Highland Park Station

10 Minute Drive to Downtown LA, Pasadena, and Eagle Rock



No warranty or representation is made to the accuracy of the foregoing information. Terms of sale or lease are subject to change or withdrawal without notice.

©2019 INDUSTRY PARTNERS, INC.

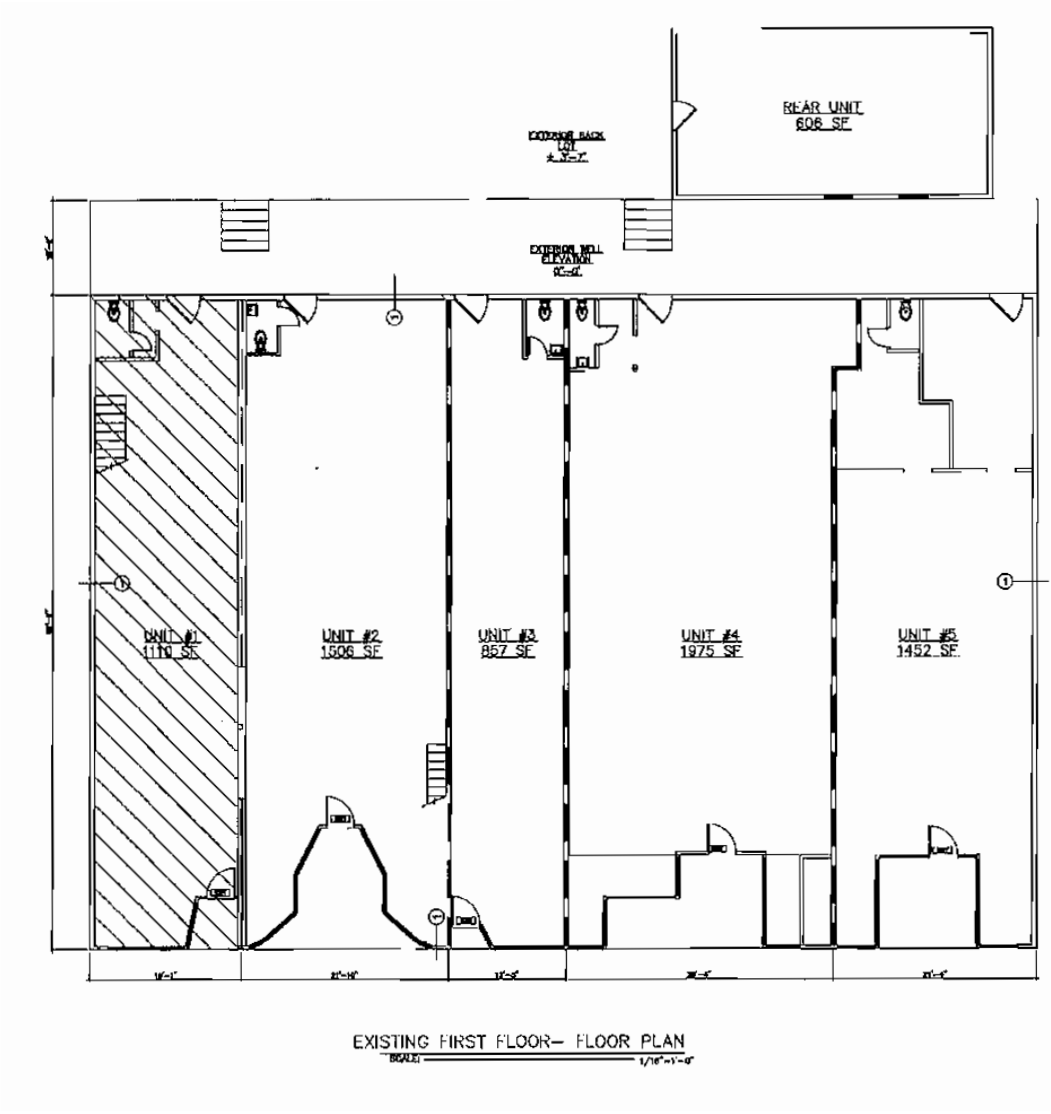
FOR LEASE

RETAIL

5627 N FIGUEROA ST HIGHLAND PARK CA 90042

FLOOR PLAN

GROUND FLOOR	
Ground Floor	± 1,110 RSF
Mezzanine	± 465 RSF
TOTAL	± 1,575 RSF



NOT TO SCALE.
Floor plan for information purposes only.
Layout and furnishings may vary

FOR LEASE

RETAIL

5627 N FIGUEROA ST HIGHLAND PARK CA 90042

INTERIOR PHOTOS



About the neighborhood

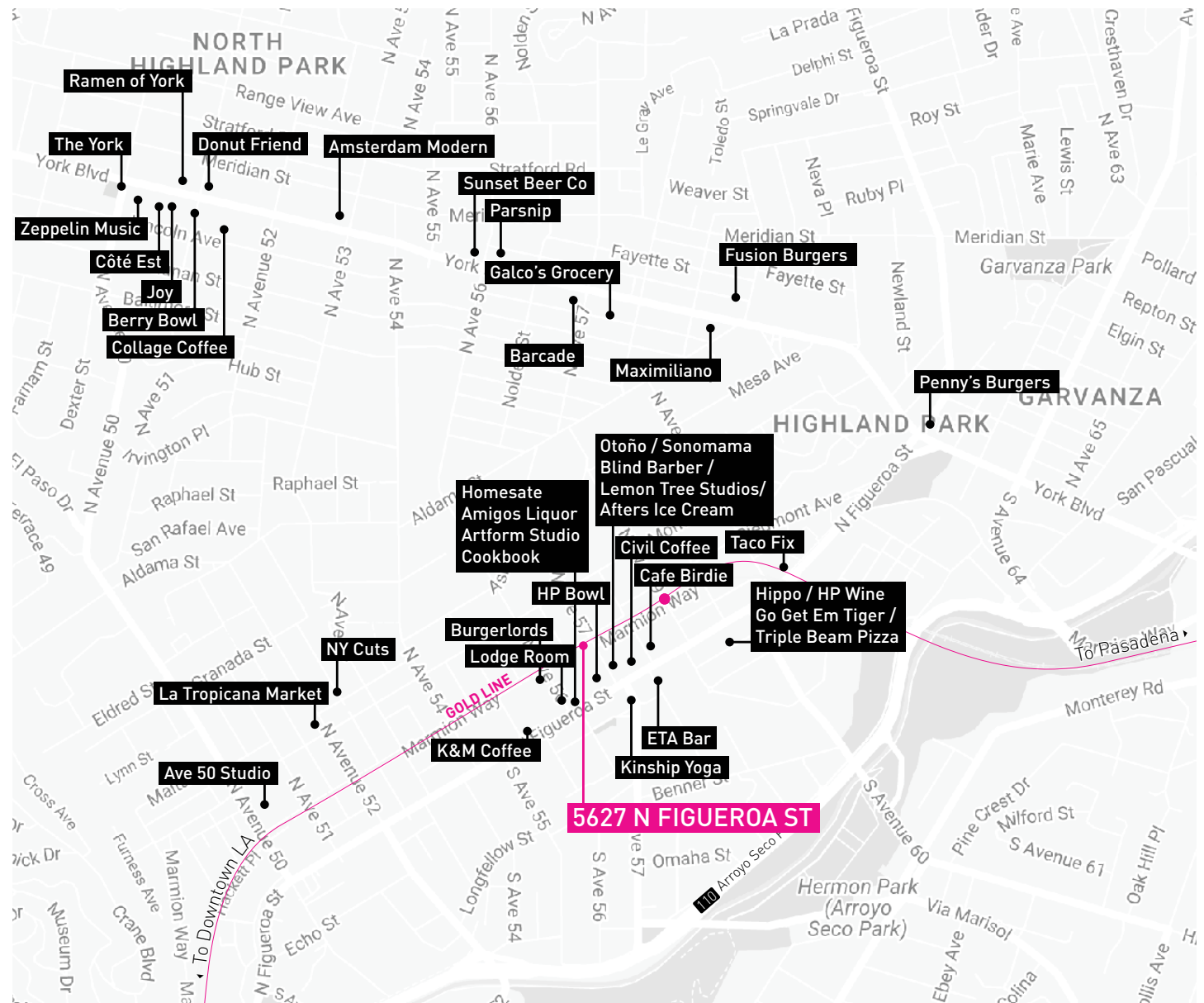
Highland Park has undergone a considerable transformation into a hot-spot in LA's creative enclaves that include Silver Lake and Echo Park.

Highland Park features new coffee concepts like Civil Coffee and K&M Coffee; bars and lounges like Gold Line and Good Housekeeping; restaurants like Homestate, Rosty, and Hippo; and destinations like Highland Park Bowl and Highland Park Brewery.

4-MIN WALK TO GOLD LINE STATION
90/100 WALKSCORE

No warranty or representation is made to the accuracy of the foregoing information. Terms of sale or lease are subject to change or withdrawal without notice.

©2019 INDUSTRY PARTNERS, INC.





Civil Coffee. Bright, airy cafe offering craft coffee, espresso & pastries, plus light breakfast & lunch fare. [Neighboring tenant in the building]



Highland Park bowl. Hip, antique-filled spot for bowling, live music, craft cocktails, pizzas, salads & seasonal fare. [Neighboring tenant in the building]



Otoño. A menu featuring elevated Spanish cuisine in a rustic space with dim lighting & a lively bar.



Blind Barber. Hidden behind a barber shop, this lounge offers craft cocktails & modern pub bites in a hip setting.



Triple Beam Pizza. Nancy Silverton & Matt Molina's Roman pizzeria serves rectangular pieces of pie, plus beer & wine.



Hippo. Contemporary American & Italian fare from an open kitchen with wine & cocktails in artful environs.