

MANANA 35

10800

N. Stemmons Fwy
Dallas, TX 75220



27,515 SF AVAILABLE

2,314 SF OFFICE

DETAILS

27,515 SF

2,314 SF Office

22' Clear Height

3 Dock High Doors

1 Ramp

Easy Access to Major Thoroughfares

Security Lighting

Ample Parking

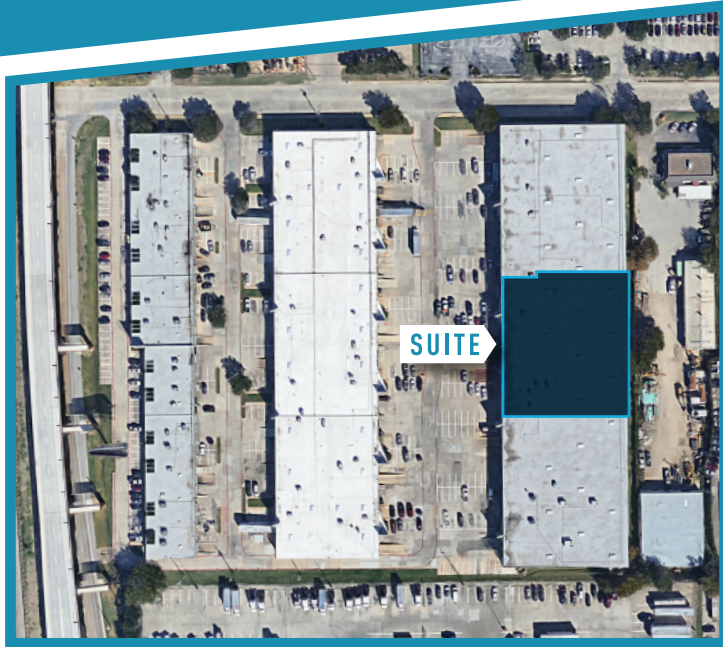


DREW FEAGIN | 214.560.5162 | drew.feagin@streamrealty.com

TODD POTICNY | 214.560.5116 | todd.poticny@streamrealty.com

STREAM

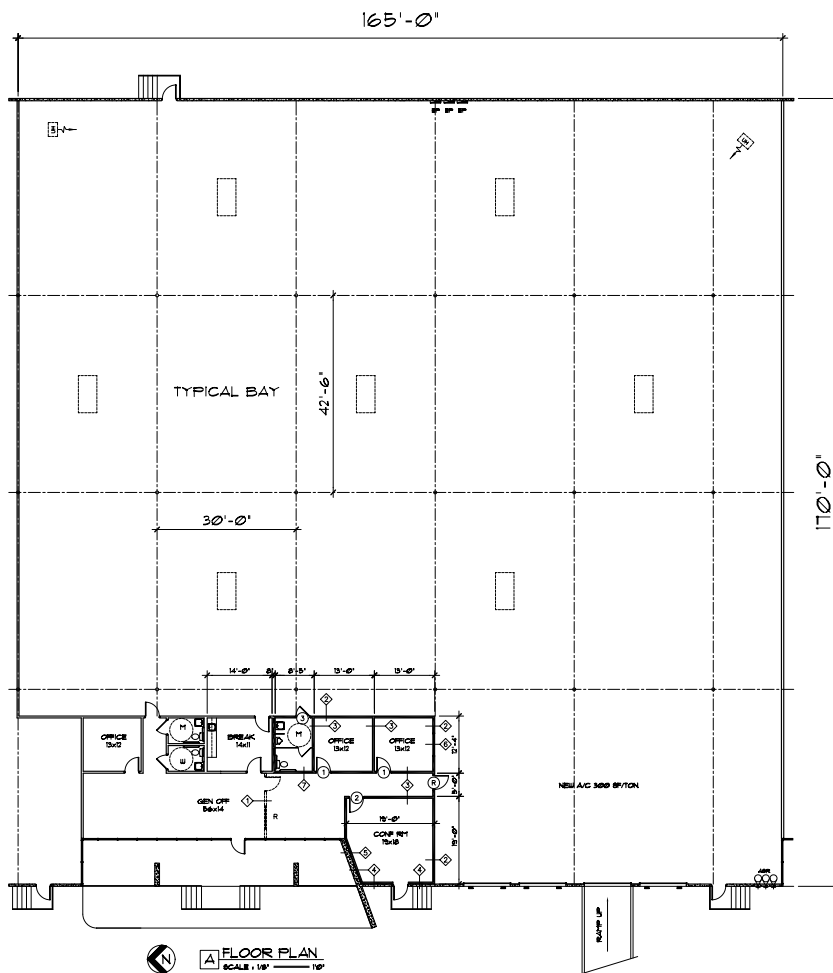
MANANA 35



10800

N. Stemmons Fwy
Dallas, TX 75220

27,515 SF AVAILABLE



DREW FEAGIN | 214.560.5162 | drew.feagin@streamrealty.com
TODD POTICNY | 214.560.5116 | todd.poticny@streamrealty.com

