



5360 N EAGLE ROAD FOR LEASE

SF AVAILABLE: 2,500 +/- SF
BUILDING SIZE: 8,507 SF

PROPERTY HIGHLIGHTS

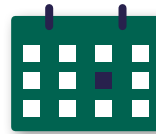
- Award winning 2nd Generation Dental Office
- Water Feature
- Ample Parking
- Easy access and great visibility from Eagle Road
- Beautiful Lobby and Reception Area with Gas Fireplace
- One Private Office has a Private Restroom
- Staff Breakroom with Refrigerator
- 51,136 vehicles per day on Eagle Road



AVAILABLE SPACE
SUITE 101 | 2,500 +/-



BUILDING SIZE
8,507 SF



LEASE TYPE
NNN



ASKING RATE
Contact Agents



INTERMOUNTAIN
COMMERCIAL REAL ESTATE

DARIN BURRELL
darin@icrellc.com
(208) 286-2260 office
(208) 860-0332 cell

SETH MCCORMACK
seth@icrellc.com
(208) 286-2272 office
(208) 918-1030 cell

www.icreboise.com | 380 E. Parkcenter Boulevard Suite 290, Boise, ID 83706 | (208) 429-8603 office | (208) 429-8604 fax

The information has been obtained from sources believed reliable and, while we do not doubt its reliability, ICRE has not verified it and makes no guarantees, warranties or representations, expressed or implied, as to its accuracy. All interested parties should conduct their own independent investigation and rely on those results.



INTERMOUNTAIN
COMMERCIAL REAL ESTATE

DARIN BURRELL
darin@icrellc.com
(208) 286-2260 office
(208) 860-0332 cell

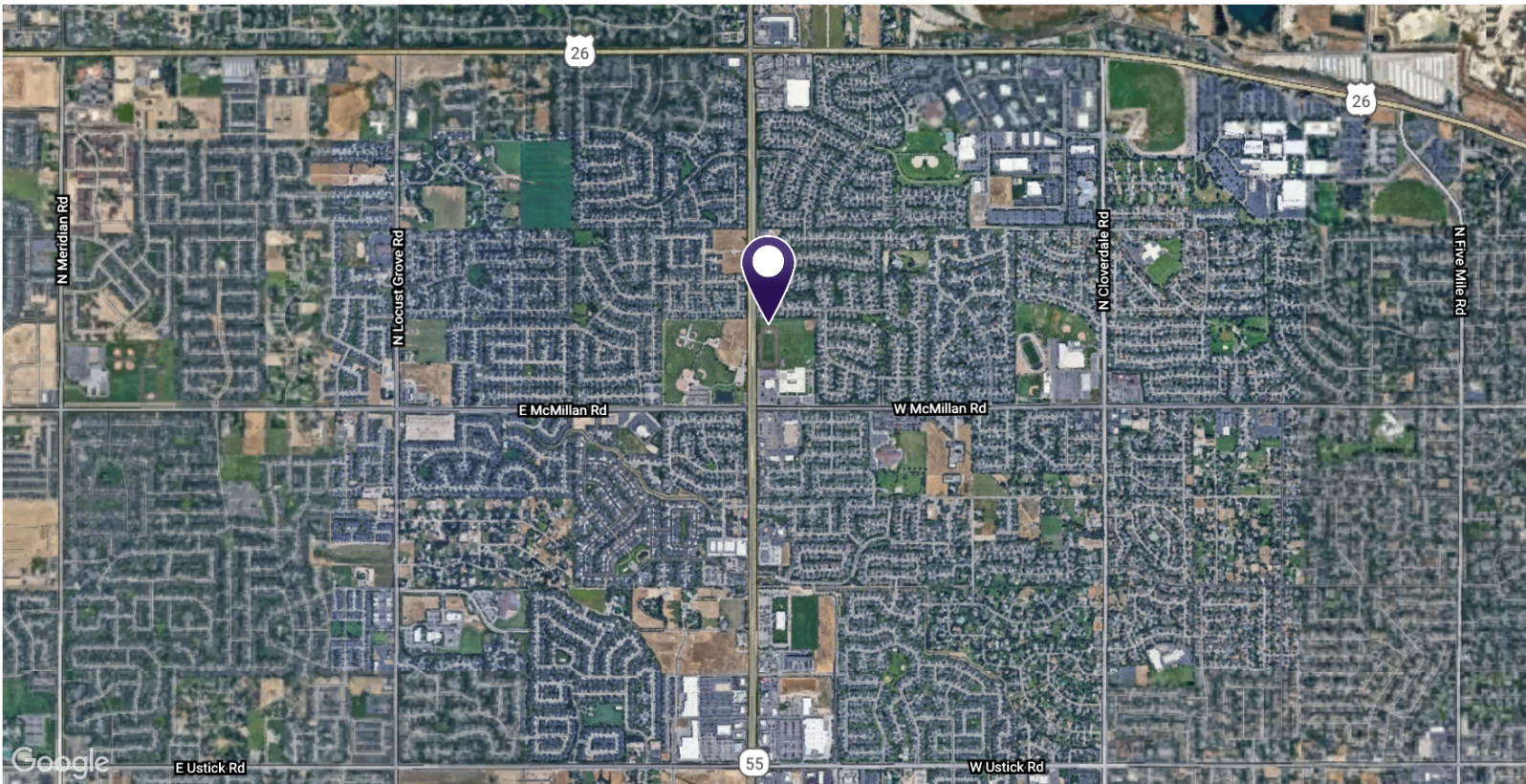
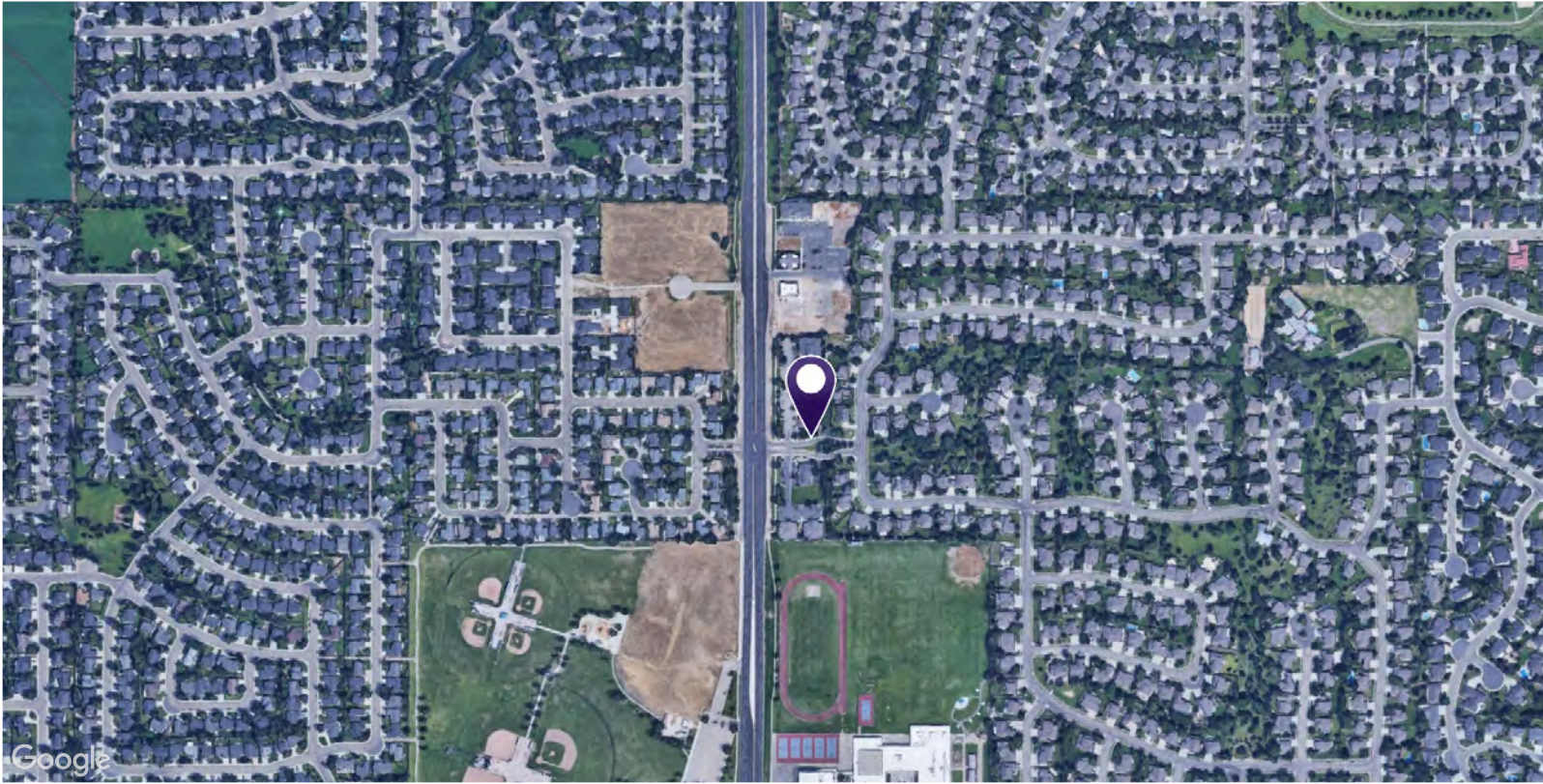
SETH MCCORMACK
seth@icrellc.com
(208) 286-2272 office
(208) 918-1030 cell



INTERMOUNTAIN
COMMERCIAL REAL ESTATE

DARIN BURRELL
darin@icrellc.com
(208) 286-2260 office
(208) 860-0332 cell

SETH MCCORMACK
seth@icrellc.com
(208) 286-2272 office
(208) 918-1030 cell



INTERMOUNTAIN
COMMERCIAL REAL ESTATE

DARIN BURRELL
darin@icrellc.com
(208) 286-2260 office
(208) 860-0332 cell

SETH MCCORMACK
seth@icrellc.com
(208) 286-2272 office
(208) 918-1030 cell