

RETAIL SPACE FOR LEASE

# MERCY HEIGHTS

301

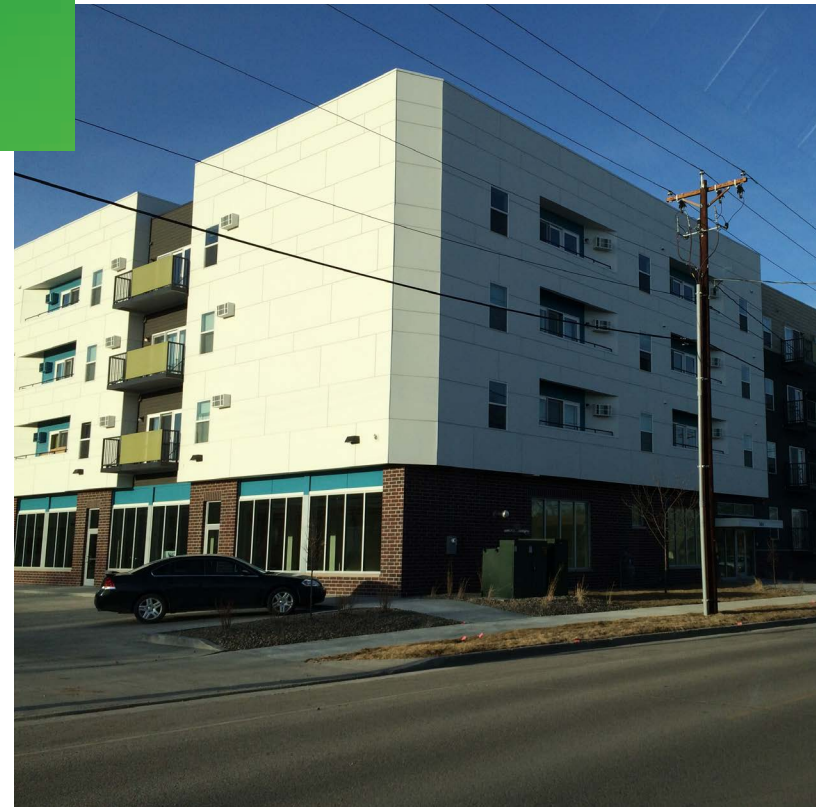
2ND STREET EAST

Williston, ND 58801



## PROPERTY FEATURES

- + Located at the base of Mercy Heights Apartments, a 68-unit apartment complex adjacent to Mercy Hospital
- + Ample parking available
- + High visibility on 2nd St. East and 3rd Ave. East
- + Well located near residential, medical and energy company populations
- + Ideally suited for restaurants, convenience store, hair and nail salons, and other uses
- + 68 residential units on site nearly all leased
- + Over 450 medical facility employees and 500 patients and visitors daily at adjacent Mercy Hospital



## CONTACT US

### MIKE GALT

Broker Associate, RE/MAX Bakken Realty  
1411 W Dakota Pkwy., Suite 3A  
Williston, ND 58801  
+1 701 580 8116  
mike@bakkenrealty.com

### MICHAEL GOLD

Senior Associate, CBRE  
311 S. Wacker Drive, Suite 400  
Chicago, IL  
+1 312 935 1921  
michael.gold@cbre.com

[www.cbre.com/mercyheights](http://www.cbre.com/mercyheights)

**CBRE**

# RETAIL SPACE FOR LEASE MERCY HEIGHTS

301  
2ND STREET EAST  
Williston, ND 58801



## PROPERTY HIGHLIGHTS

- + 4,316 SF available
- + \$16.00 - \$18.00 PSF
- + Can be divided into three storefronts



## 2013 DEMOGRAPHICS

	1 mile	3 miles	5 miles
Avg. Household Income:	\$76,599	\$72,430	\$72,492



[www.cbre.com/mercyheights](http://www.cbre.com/mercyheights)

**CBRE**

# RETAIL SPACE FOR LEASE MERCY HEIGHTS

301  
2ND STREET EAST  
Williston, ND 58801



## WHY WILLISTON, ND?

- + Williston leads North Dakota in Sales Tax for 12th Consecutive Quarter
- + \$77,000 Median Household Income and projected to continue to rise
- + Population estimates show Williston and the surrounding trade area will expand to over 50,000 residents within the next four years
- + Williston has led the state in housing permit valuations for the last 2 years. Thousands of apartments and hundreds of homes are under construction and/or completed
- + Ranked Fastest Growing Micropolitan Area in the US for 3rd consecutive year
- + Mercy Hospital, in Williston, is arguably the fastest expanding medical facility in the nation with over 450 employees and an average of about 500 patients/visitors per weekday and 100 per day on weekends
- + Home to the largest oil formation in the Bakken Shale Region and over 400 Oilfield Businesses
- + This year, Williston will begin a multi phase (\$30 million) revitalization plan
- + The Sloulin Field Airport is currently working on relocation efforts that will double the size of its current facility
- + Williston State College is expanding at a rapid pace with millions in campus expansion and renovations



## HOME TO OTHER RETAILERS INCLUDING:



© 2016 CBRE, Inc. This information has been obtained from sources believed reliable. We have not verified it and make no guarantee, warranty or representation about it. Any projections, opinions, assumptions or estimates used are for example only and do not represent the current or future performance of the property. You and your advisors should conduct a careful, independent investigation of the property to determine to your satisfaction the suitability of the property for your needs. All marks displayed on this document are the property of their respective owners. Photos herein are the property of their respective owners and use of these images without the express written content of the owner is prohibited. REVISED: 02/18/16

[www.cbre.com/mercyheights](http://www.cbre.com/mercyheights)

**CBRE**

# RETAIL SPACE FOR LEASE MERCY HEIGHTS

301  
2ND STREET EAST  
Williston, ND 58801

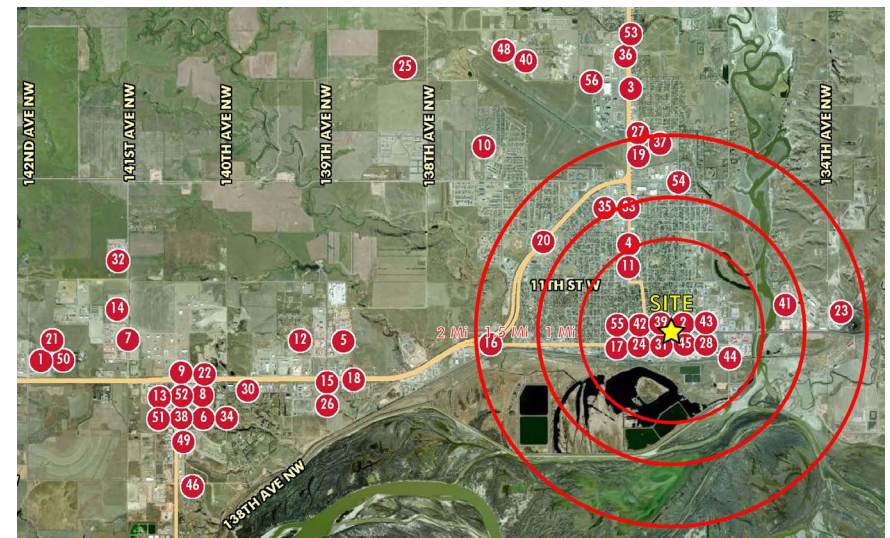


## WILLISTON ENERGY COMPANY

#	Company	Address
2	Armada Pressure Control	299 E Broadway
3	Astro-Chem Lab	4102 2nd Ave W
4	Athens/Alpha Gas Corp.	1623 2nd Ave W
5	Baker Hughes	5050 139th Ave NW
10	Can Rig	128 24th Ave W
11	Coyote Enterprises Inc.	1319 2nd Ave W
12	Cudd Energy Services	13902 Sunset Blvd
15	Express Energy Services	5023 139th Ave
16	Exterran	4396 Highway 85
17	Frontier Energy Group, LLC	322 Main St
18	Frontier Slickline & Frontier Hot Oil	13877 Hwy 2-W
19	GE Oil & Gas Pressure Control	3020 First Ave W
20	Geosource, Inc.	1407 West Dakota Pkwy
23	Halliburton	420 Halliburton Dr
24	Hess Corporation	113 E 4th St
25	Hunting	5023 138 Ave NW
27	Key Energy Services	115 34th St W
28	KLJ	820 E Broadway
31	Maverick Logistics, Inc.	5805 Sherman Ln
33	National Oilwell Varco	2203 2nd Ave W
35	NOV	2203 2nd Ave W
36	Power Fuels	4607 2nd Ave W
37	Prairie Petro Chem	3119 1st Ave W
39	Rockwater Energy Solutions	113 4th E
40	S K & S Oilfield Service Inc	4513 16th Ave W
41	Sanjel (USA) Inc.	511 22nd Ave NE
42	Select Energy Services, LLC	417 1st Ave
43	Silverado Oil Field Service, Inc.	702 4th St E

#	Company	Address
44	Slumberger	12 E Dakota Pkwy
45	SM Energy Company	501 E Broadway
48	Strad Energy Services	4506 B 18th Ave W
53	Tervita	4904 2nd Ave W
54	Weatherford	2619 University Ave
55	Whiting	322 Main St
56	Zavanna, LLC	840 42nd St W

## OIL & ENERGY COMPANY MAP

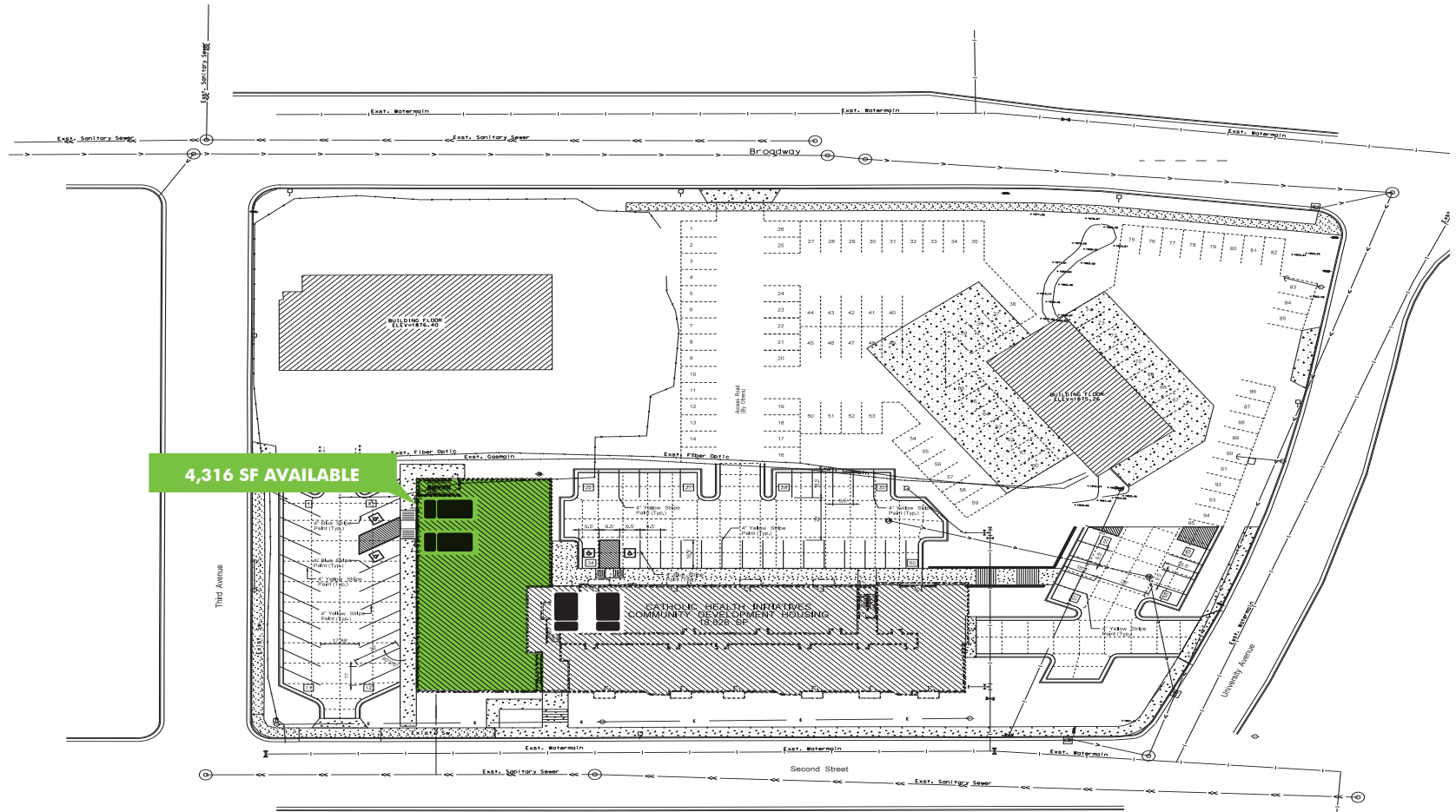


# RETAIL SPACE FOR LEASE MERCY HEIGHTS

301  
2ND STREET EAST  
Williston, ND 58801



## SITE PLAN



[www.cbre.com/mercyheights](http://www.cbre.com/mercyheights)

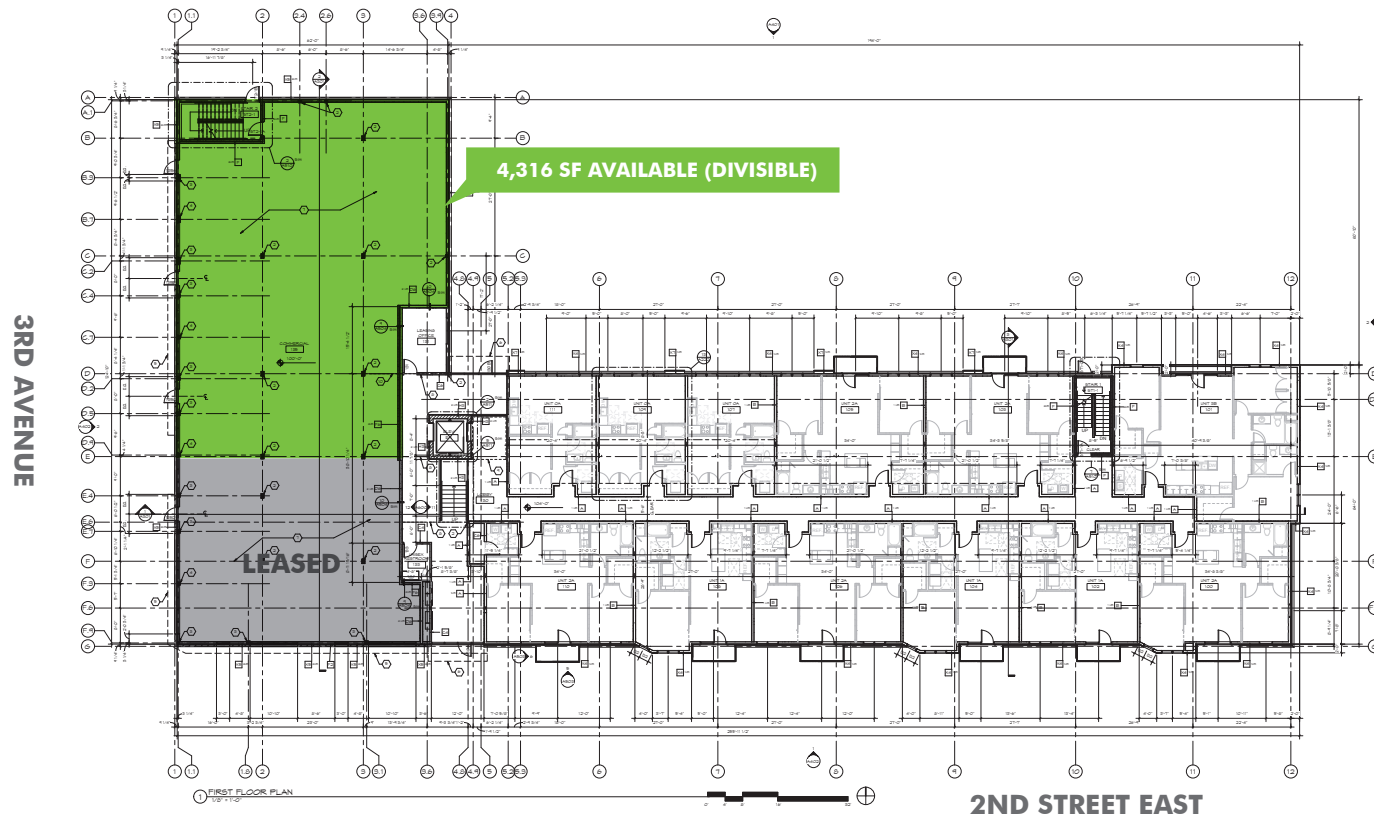
**CBRE**

# RETAIL SPACE FOR LEASE MERCY HEIGHTS

301  
2ND STREET EAST  
Williston, ND 58801



## FLOOR PLAN



© 2016 CBRE, Inc. This information has been obtained from sources believed reliable. We have not verified it and make no guarantee, warranty or representation about it. Any projections, opinions, assumptions or estimates used are for example only and do not represent the current or future performance of the property. You and your advisors should conduct a careful, independent investigation of the property to determine to your satisfaction the suitability of the property for your needs

CBRE and the CBRE logo are service marks of CBRE, Inc. and/or its affiliated or related companies in the United States and other countries. All other marks displayed on this document are the property of their respective owners. Photos herein are the property of their respective owners and use of these images without the express written consent of the owner is prohibited.

[www.cbre.com/mercyheights](http://www.cbre.com/mercyheights)

**CBRE**