



Keegan & Coppin
COMPANY, INC.

FOR LEASE

884 BODEGA AVENUE
PETALUMA, CA

Creative Space With Roll-up Door



Go beyond broker.

REPRESENTED BY:

SUMMER JAGER, AGENT
LIC # 02222063 (707) 664-1400, EXT 313
SJAGER@KEEGANCOPPIN.COM

SARA WANN, PARTNER
LIC # 01437146 (707) 664-1400, EXT 308
SWANN@KEEGANCOPPIN.COM



PROPERTY DETAILS



884 BODEGA AVENUE
PETALUMA, CA

**CREATIVE SPACE
WITH ROLL-UP DOOR**

PROPERTY INFORMATION

HIGHLIGHTS

- Strong Identity Building
- On-Site Parking
- Roll-up Door

AVAILABILITY

Unit 7: 3,000+/- SF

DESCRIPTION

Unique two-story open space unit with a roll-up door, best suited for storage or other creative uses.

884 Bodega Ave. presents an exceptional chance to utilize a truly creative space, perfectly suited for a wide variety of uses. Ideally located just a mile from Petaluma's vibrant downtown.

LEASE TERMS

RATE

Unit 7: \$0.50 PSF

TERMS

Gross Lease

No CAM's

PARKING

1 On-Site

ZONING

C1 - Commercial 1

Keegan & Coppin Co., Inc.
1201 N McDowell Boulevard
Petaluma, CA 94954
www.keegancoppin.com
(707) 664-1400

The above information, while not guaranteed, has been secured from sources we believe to be reliable. Submitted subject to error, change or withdrawal. An interested party should verify the status of the property and the information herein.

REPRESENTED BY:

SUMMER JAGER, AGENT
LIC # 02222063 (707) 664-1400, EXT 313
SJAGER@KEEGANCOPPIN.COM

SARA WANN, PARTNER
LIC # 01437146 (707) 664-1400, EXT 308
SWANN@KEEGANCOPPIN.COM

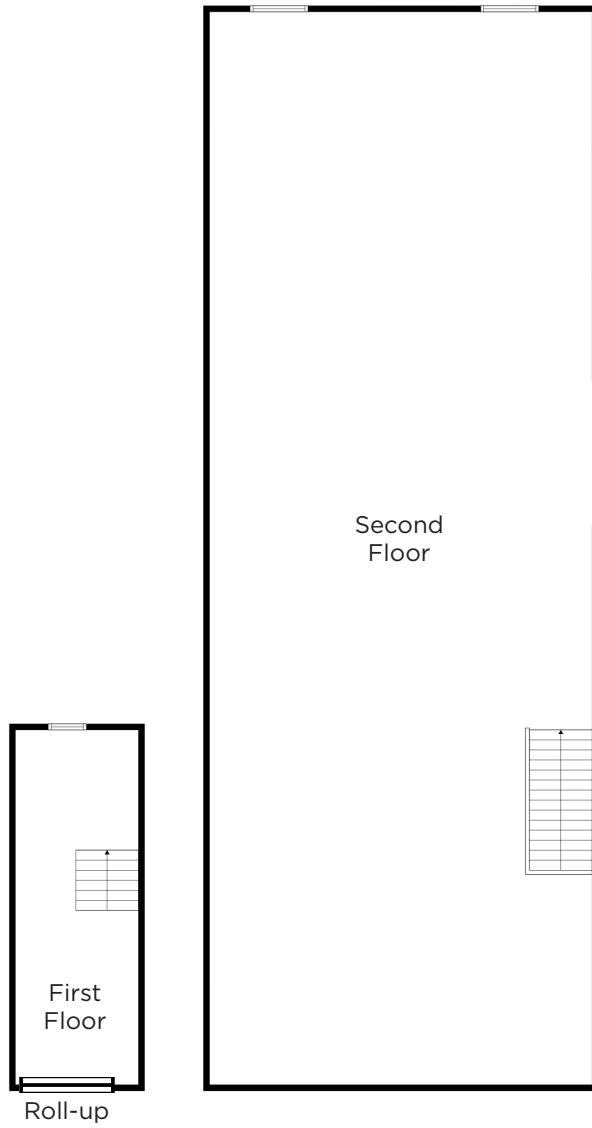


FLOOR PLAN - UNIT 7



884 BODEGA AVENUE
PETALUMA, CA

CREATIVE SPACE
WITH ROLL-UP DOOR



PRESENTED BY:

SUMMER JAGER, AGENT
LIC # 02222063 (707) 664-1400, EXT 313
SJAGER@KEEGANCOPPIN.COM

SARA WANN, PARTNER
LIC # 01437146 (707) 664-1400, EXT 308
SWANN@KEEGANCOPPIN.COM

The above information, while not guaranteed, has been secured from sources we believe to be reliable. Submitted subject to error, change or withdrawal. An interested party should verify the status of the property and the information herein.



PHOTOS - UNIT 7



884 BODEGA AVENUE
PETALUMA, CA

CREATIVE SPACE
WITH ROLL-UP DOOR



PRESENTED BY:

SUMMER JAGER, AGENT
LIC # 02222063 (707) 664-1400, EXT 313
SJAGER@KEEGANCOPPIN.COM

SARA WANN, PARTNER
LIC # 01437146 (707) 664-1400, EXT 308
SWANN@KEEGANCOPPIN.COM

The above information, while not guaranteed, has been secured from sources we believe to be reliable. Submitted subject to error, change or withdrawal. An interested party should verify the status of the property and the information herein.

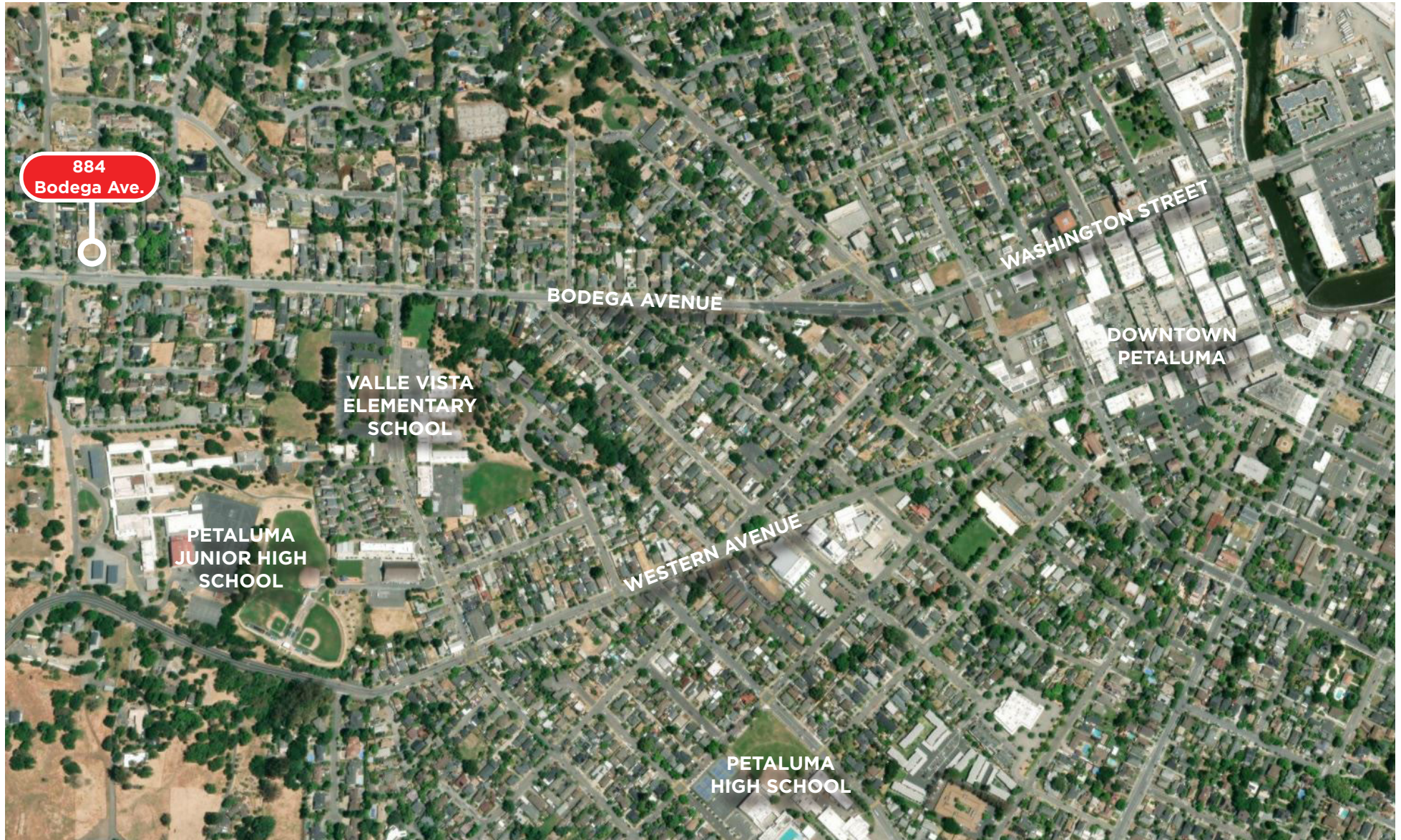


AERIAL IMAGE



884 BODEGA AVENUE
PETALUMA, CA

CREATIVE SPACE
WITH ROLL-UP DOOR



PRESENTED BY:

SUMMER JAGER, AGENT
LIC # 02222063 (707) 664-1400, EXT 313
SJAGER@KEEGANCOPPIN.COM

SARA WANN, PARTNER
LIC # 01437146 (707) 664-1400, EXT 308
SWANN@KEEGANCOPPIN.COM

The above information, while not guaranteed, has been secured from sources we believe to be reliable. Submitted subject to error, change or withdrawal. An interested party should verify the status of the property and the information herein.