

155,000 SF - 624,672 SF  
SPACE FOR LEASE  
ACTIVE UNION PACIFIC- DUAL RAIL



GLOBAL II

PROVISO DR

AVAILABLE

MANNHEIM RD

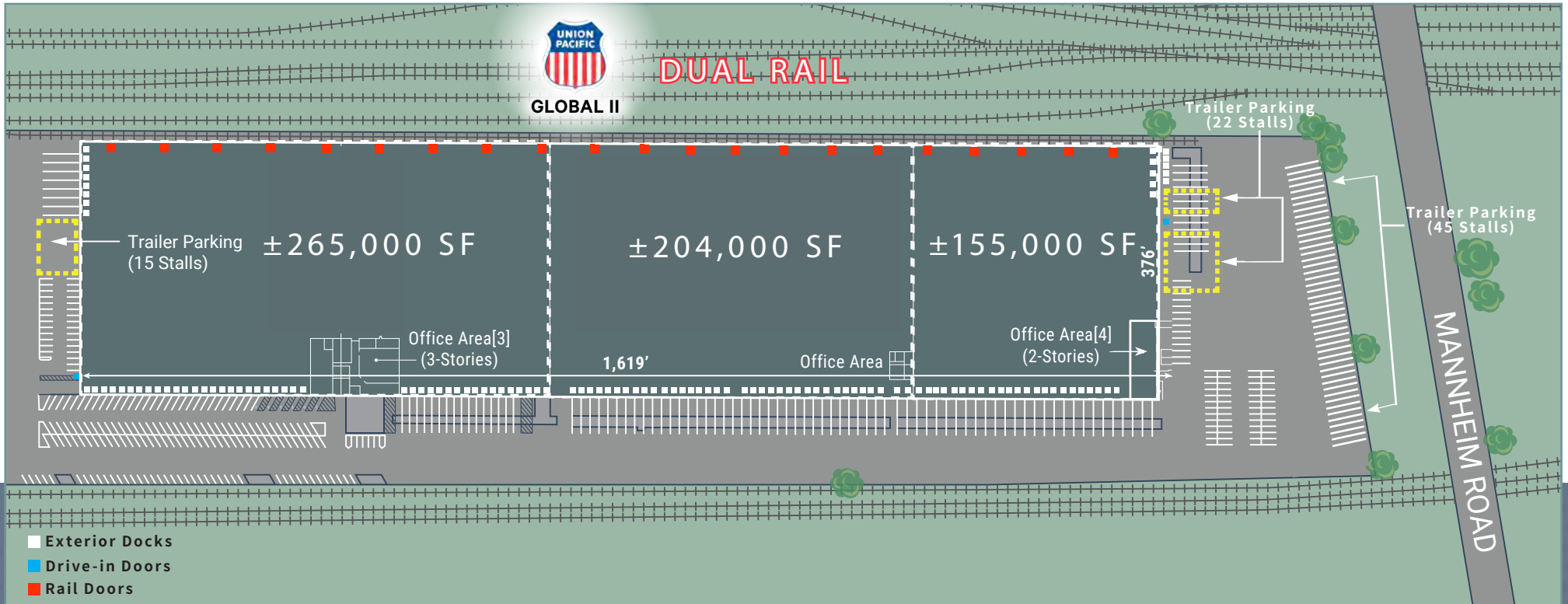


4700-4800 PROVISO DR  
MELROSE PARK, IL 60163

CBRE Hines

MELROSE PARK  
DISTRIBUTION CENTER

# FLOOR PLAN



Building Size  
**624,672 SF**

Available Size  
**155,000 - 624,672 SF**

Office Size  
**10,223 SF (1ST FL)**  
**5,633 SF (2ND FL)**

Drive-in Door  
**2**

Exterior Docks  
**86**

Active Rail Doors (Union Pacific)  
**21**

Box Car Loading Positions  
**42**

Ceiling Height  
**32'-35'**

Property Tax Incentive  
**CLASS 6B ELIGIBLE**

Sprinkler System  
**ESFR**

Trailer Parking  
**82 Stalls**

Employee Parking  
**191**

Column Spacing  
**54' X 44.5'**

Land  
**20.38 ACRES**

Year Built  
**1985**

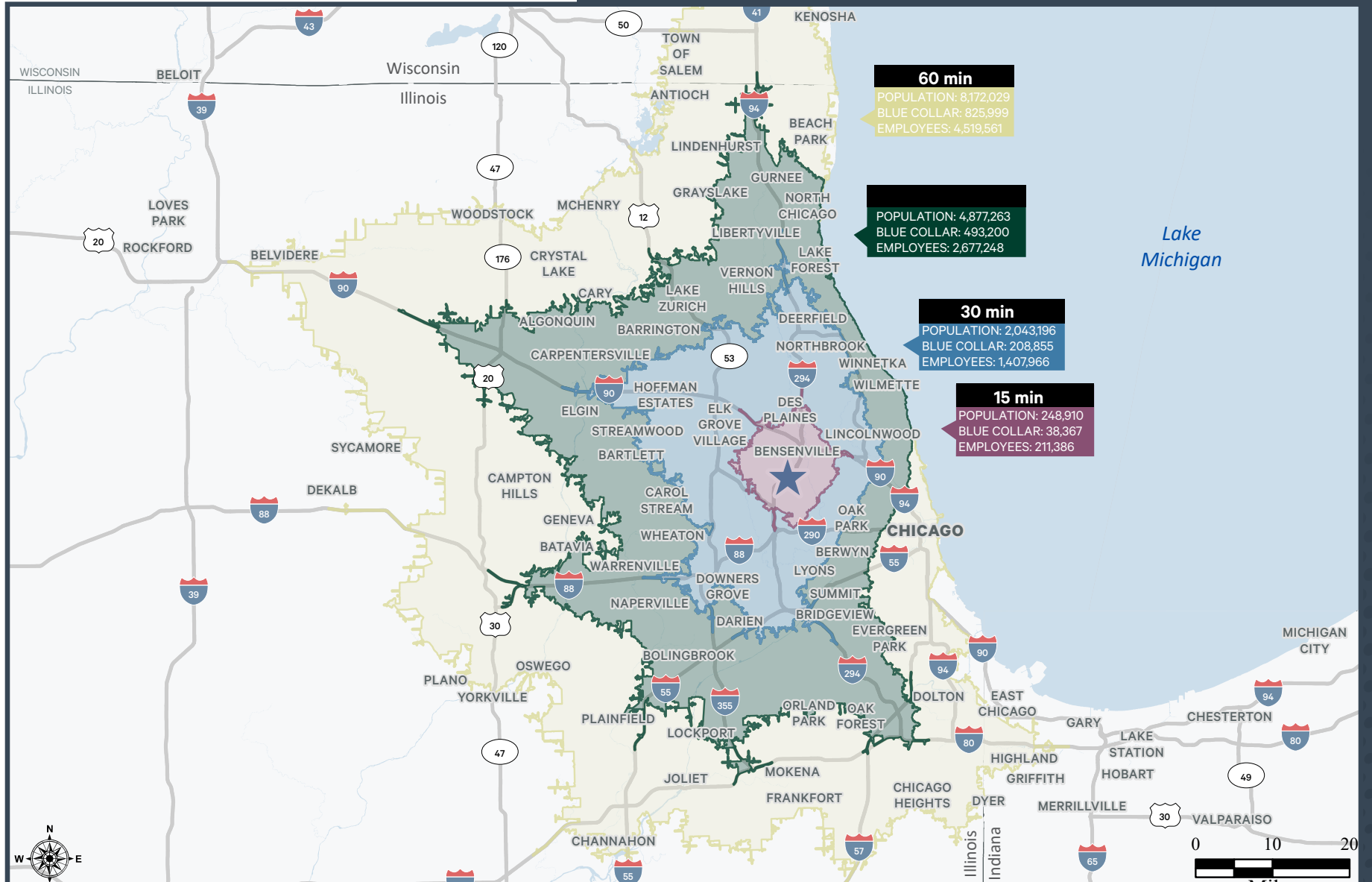
Lighting  
**LED**

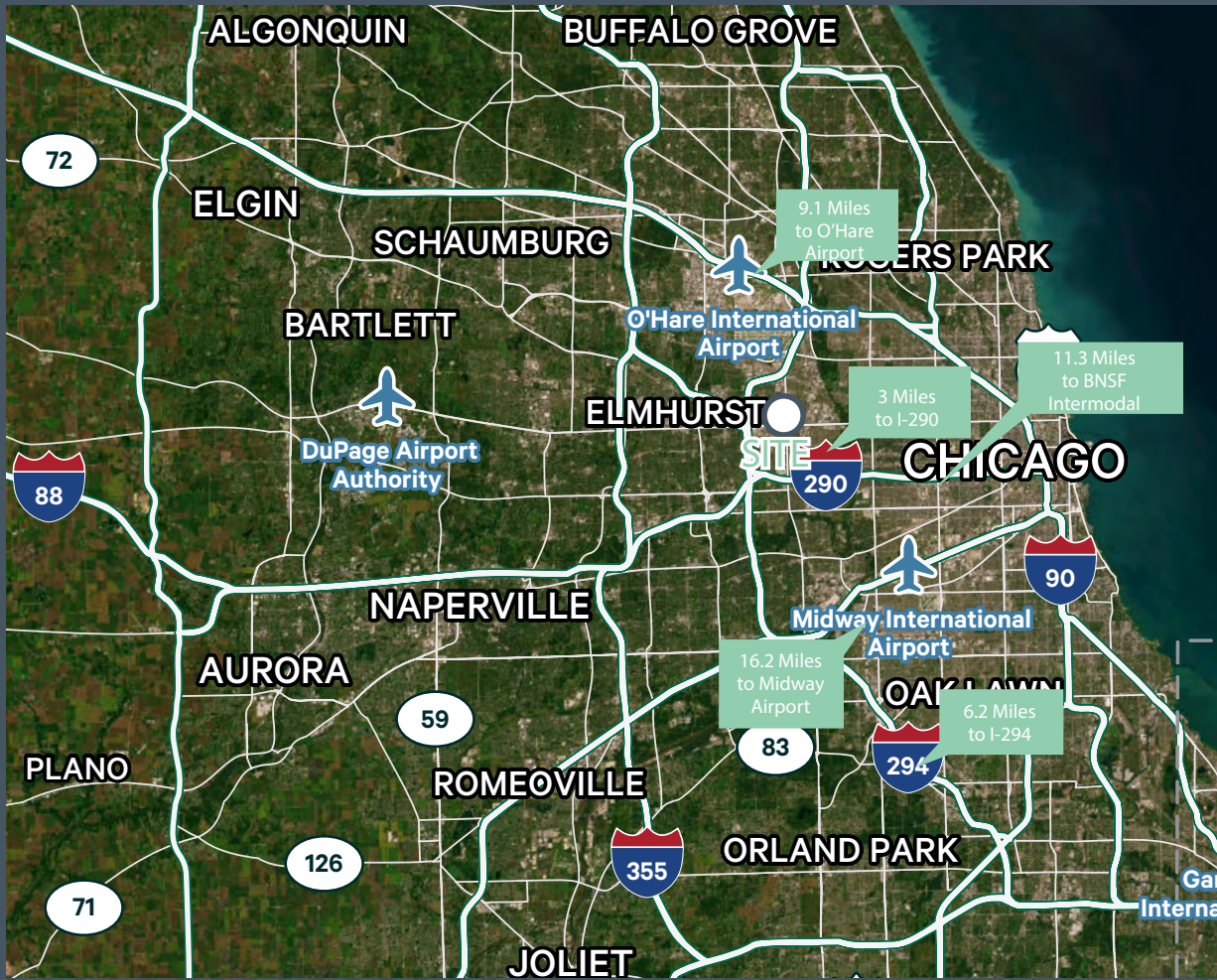
Power  
**5600 AMPS**  
**270/480 VOLTS**

# ACCESS MAP



# DRIVE TIME MAP





4700-4800 PROVISO DR  
MELROSE PARK, IL 60163

# MELROSE PARK DISTRIBUTION CENTER

155,000 SF - 624,672 SF  
SPACE FOR LEASE

**JASON LEV**  
Executive Vice President  
+1 847 706 4044  
jason.lev@cbre.com

**JIMMY KOWALCZYK**  
First Vice President  
+1 630 368 5548  
jimmy.kowalczyk@cbre.com

Hines **CBRE**

© 2026 CBRE, Inc. All rights reserved. This information has been obtained from sources believed reliable but has not been verified for accuracy or completeness. CBRE, Inc. makes no guarantee, representation or warranty and accepts no responsibility or liability as to the accuracy, completeness, or reliability of the information contained herein. You should conduct a careful, independent investigation of the property and verify all information. Any reliance on this information is solely at your own risk. CBRE and the CBRE logo are service marks of CBRE, Inc. All other marks displayed on this document are the property of their respective owners, and the use of such marks does not imply any affiliation with or endorsement of CBRE. Photos herein are the property of their respective owners. Use of these images without the express written consent of the owner is prohibited.