

# 208 Monterey

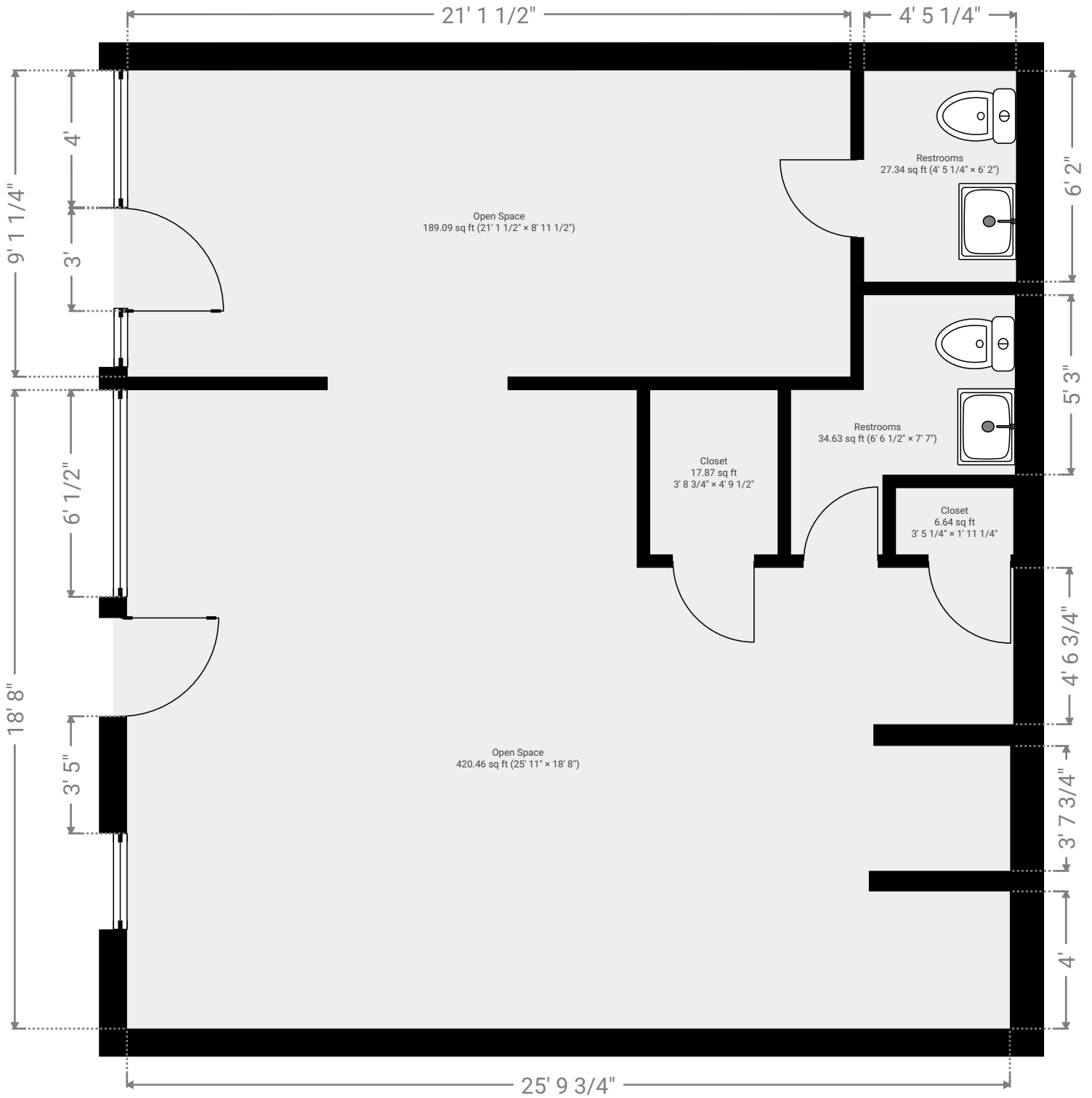


208 Monterey Ave, 95010 Capitola, CA, USA  
TOTAL AREA: 816.24 sq ft • LIVING AREA: 816.24 sq ft • FLOORS: 1 • ROOMS: 6

SUBMITTED BY Daniel Fries  
daniel@friesproperties.com

## ▼ Ground Floor

TOTAL AREA: 816.24 sq ft • LIVING AREA: 816.24 sq ft • ROOMS: 6



THIS FLOOR PLAN IS PROVIDED WITHOUT WARRANTY OF ANY KIND. SENSOPIA DISCLAIMS ANY WARRANTY INCLUDING, WITHOUT LIMITATION, SATISFACTORY QUALITY OR ACCURACY OF DIMENSIONS.

