

Stadium Crossing Plaza II

1400 E. 69th Street, Sioux Falls, SD 57108

PROPERTY HIGHLIGHTS

- New construction in growing southern Sioux Falls
- Estimated delivery Q1 2024
- Suite 1404: 1,710 sq. ft. - drive-thru end cap
- Suite 1408: 1,010 sq. ft.
- Suite 1412: 1,880 sq. ft.
- Suite 1416: 1,010 sq. ft.
- Suite 1420: 1,704 sq. ft. - end cap

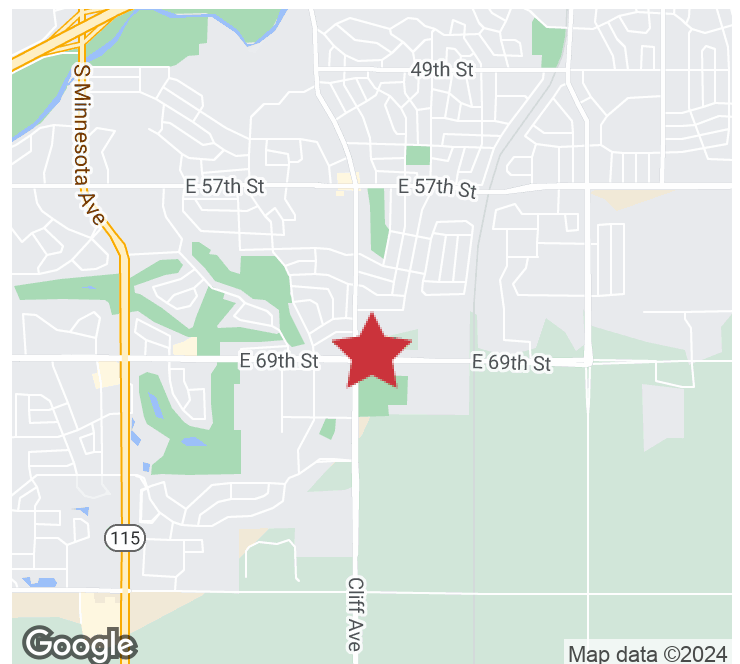
LOCATION DESCRIPTION

Located at the northeast intersection of 69th Street and Cliff Avenue and adjacent to Plaza I.

Area neighbors include Starbucks, Cookie Co., Year Round Brown, Gloss Nail Spa, B&G Milkyway, Casey's, Levo Federal Credit Union, University of Sioux Falls Sports Complex, Roundhouse Brew Pub, Circle K

Directly south of Stadium Commons multi-family units - 258 total units to be completed in Summer 2023

Lease Rate	\$21.00 - 22.00/SF
Estimated NNN Expenses	\$6.00/SF
TI Allowance	\$25.00/SF



GREGG BROWN, MBA, SIOR
Chief Operating Officer, SVP
gbrown@naisiouxfalls.com
605.906.0394



MARCUS MAHLEN, CCIM, SIOR
Chief Business Development Officer, SVP
mmahlen@naisiouxfalls.com
605.228.9744

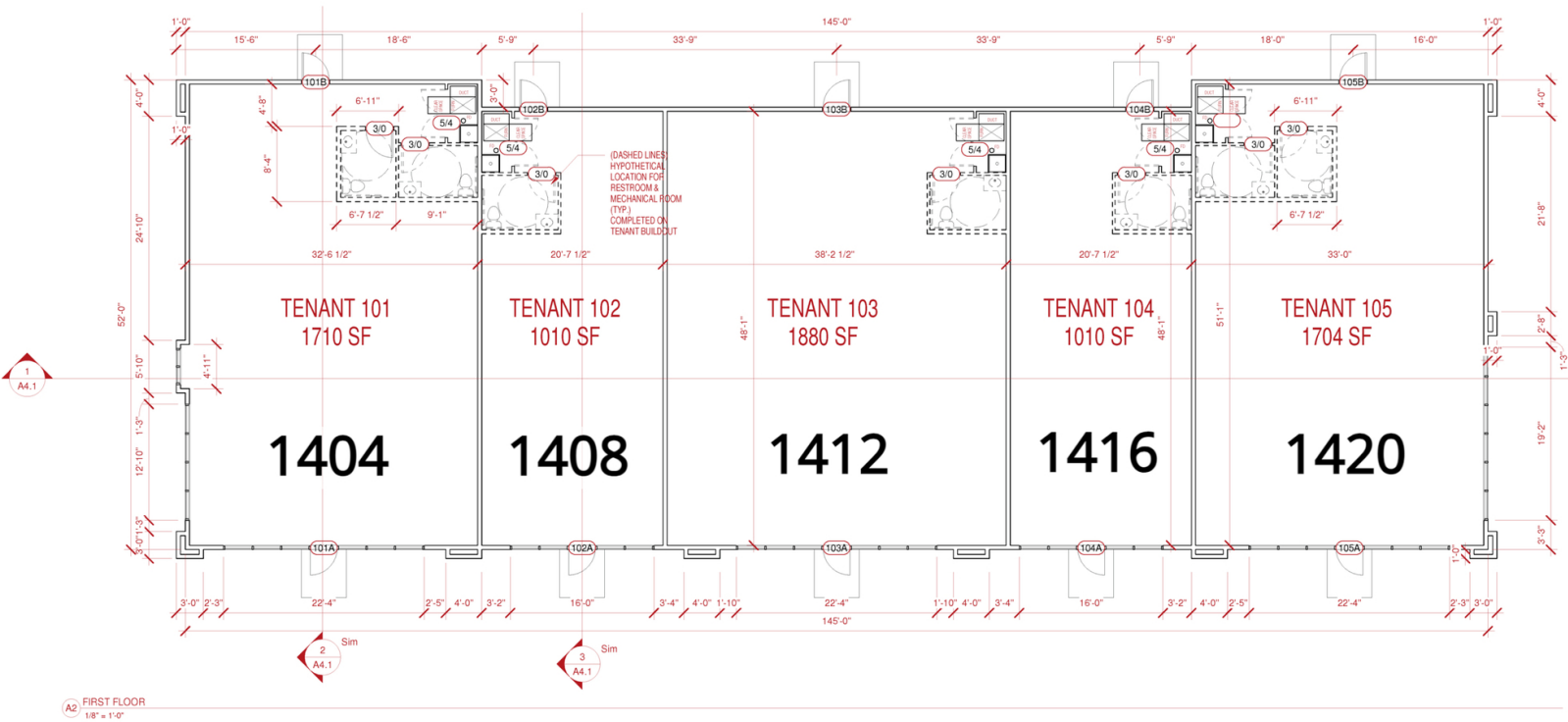
2500 W. 49th St. Suite 100
Sioux Falls, SD 57105
605.357.7100
naisiouxfalls.com

FLOOR PLAN

STADIUM CROSSING PLAZA II
1400 E. 69th Street, Sioux Falls, SD 57108

FOR LEASE

Retail Suites



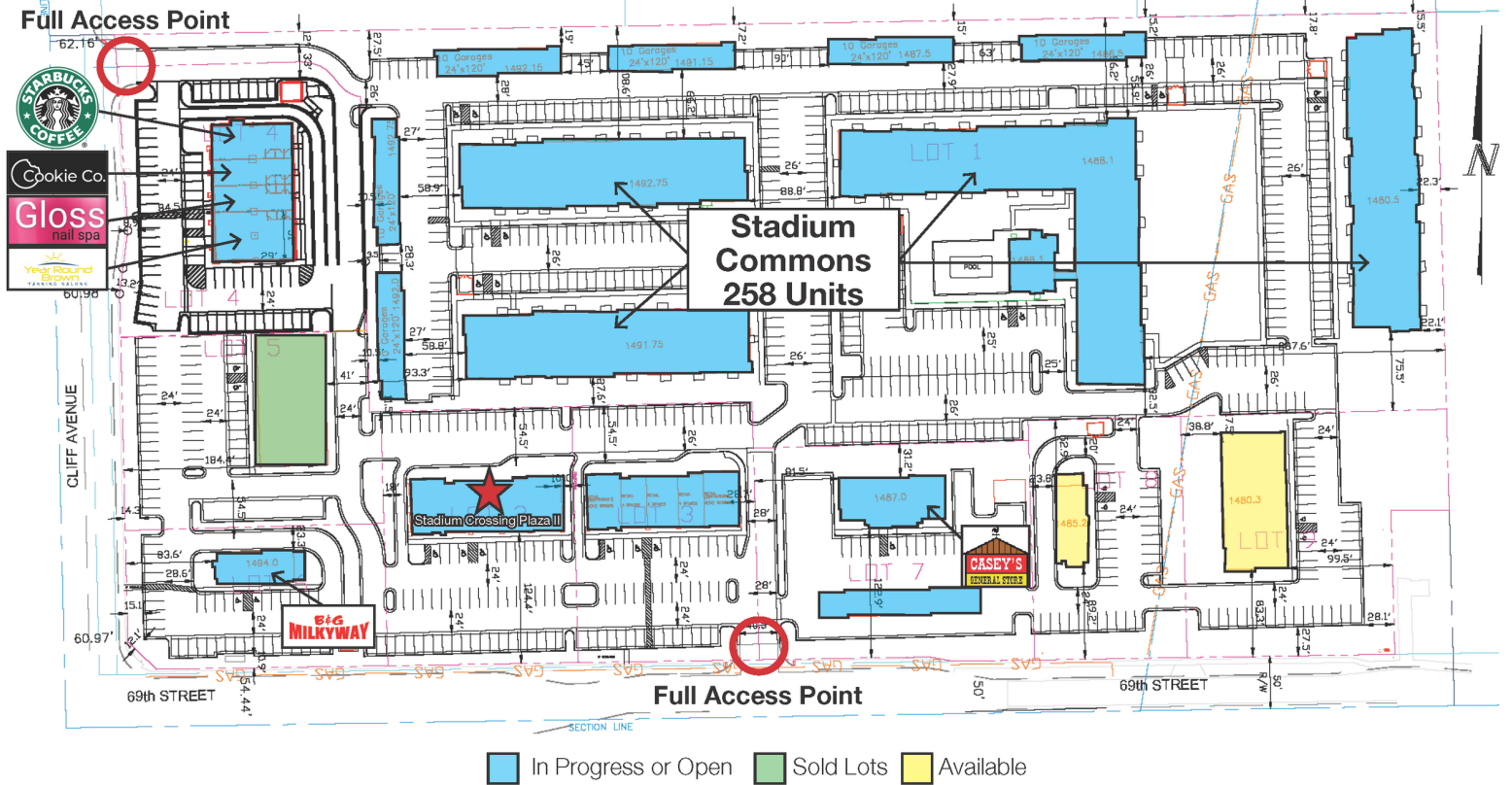
SITE PLAN

STADIUM CROSSING PLAZA II

1400 E. 69th Street, Sioux Falls, SD 57108

FOR LEASE

Retail Suites

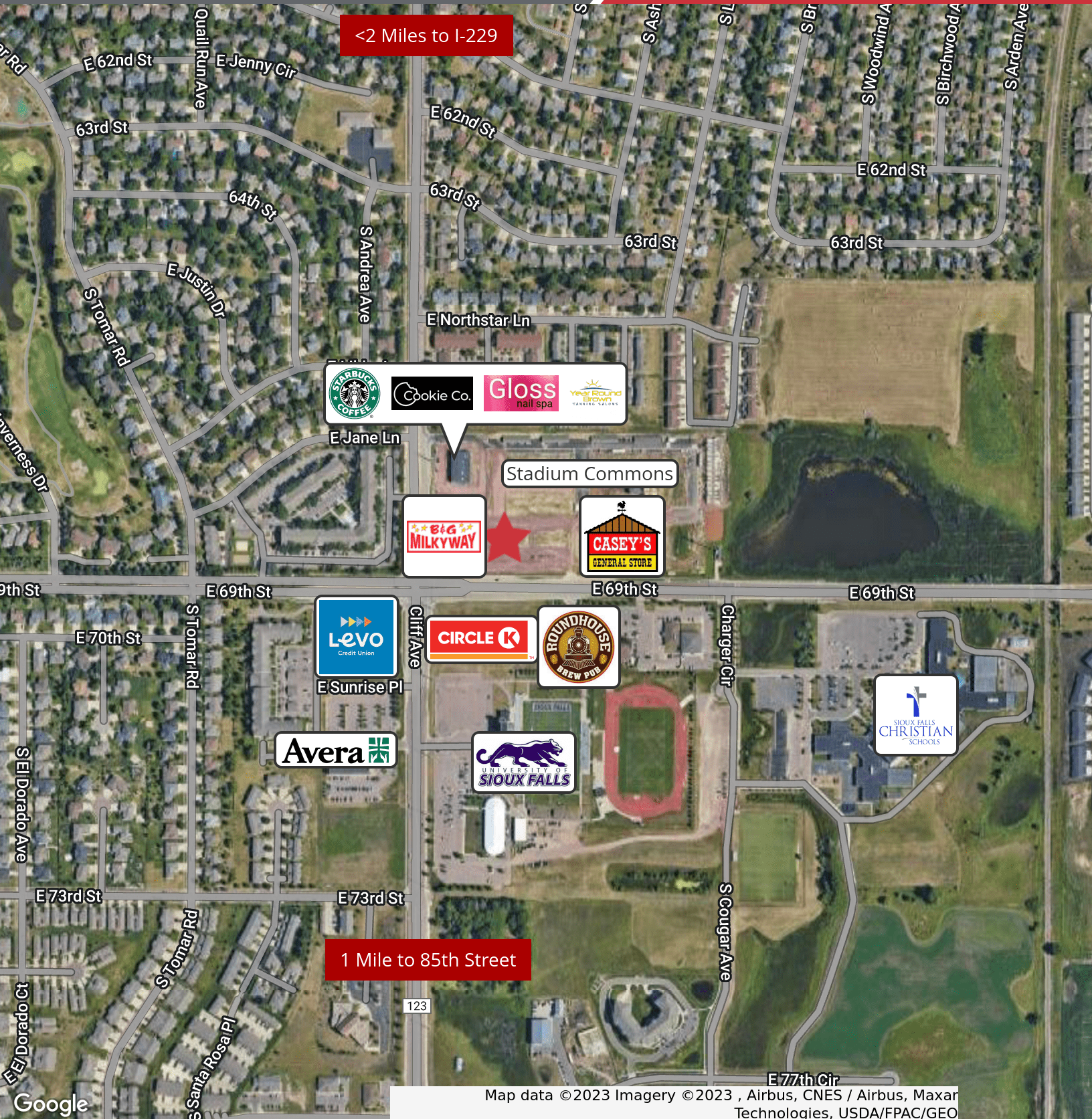


AERIAL

STADIUM CROSSING PLAZA II
1400 E. 69th Street, Sioux Falls, SD 57108

FOR LEASE

Retail Suites



<2 Miles to I-229

1 Mile to 85th Street

Map data ©2023 Imagery ©2023 , Airbus, CNES / Airbus, Maxar Technologies, USDA/FPAC/GEO