

36150 & 36250 DEQUINDRE RD.
STERLING HEIGHTS, MICHIGAN



**SIGNATURE
ASSOCIATES**
KNOW SIGNATURE | KNOW RESULTS

OFFICE FOR LEASE
1,190 - 4,941 Square Feet Available

LAUREL VALLEY OFFICE CENTER



PROPERTY FEATURES

- 36150 Dequindre Road
 - Suite 540: 1,200 sq. ft. available
 - Suite 610: 1,426 sq. ft. available
- 36250 Dequindre Road
 - Suite 100: 3,326 sq. ft. available
 - Suite 130: 1,615 sq. ft. available
 - Suite 330: 1,190 sq. ft. available
- Zoned OS-1
- 8' ceiling height
- A must see plug and play opportunity
- Fully furnished, high-end corporate space
- Ample parking
- Move-in ready
- Professional space and building
- Lease Rate: \$15.55/sq. ft. G+E+J



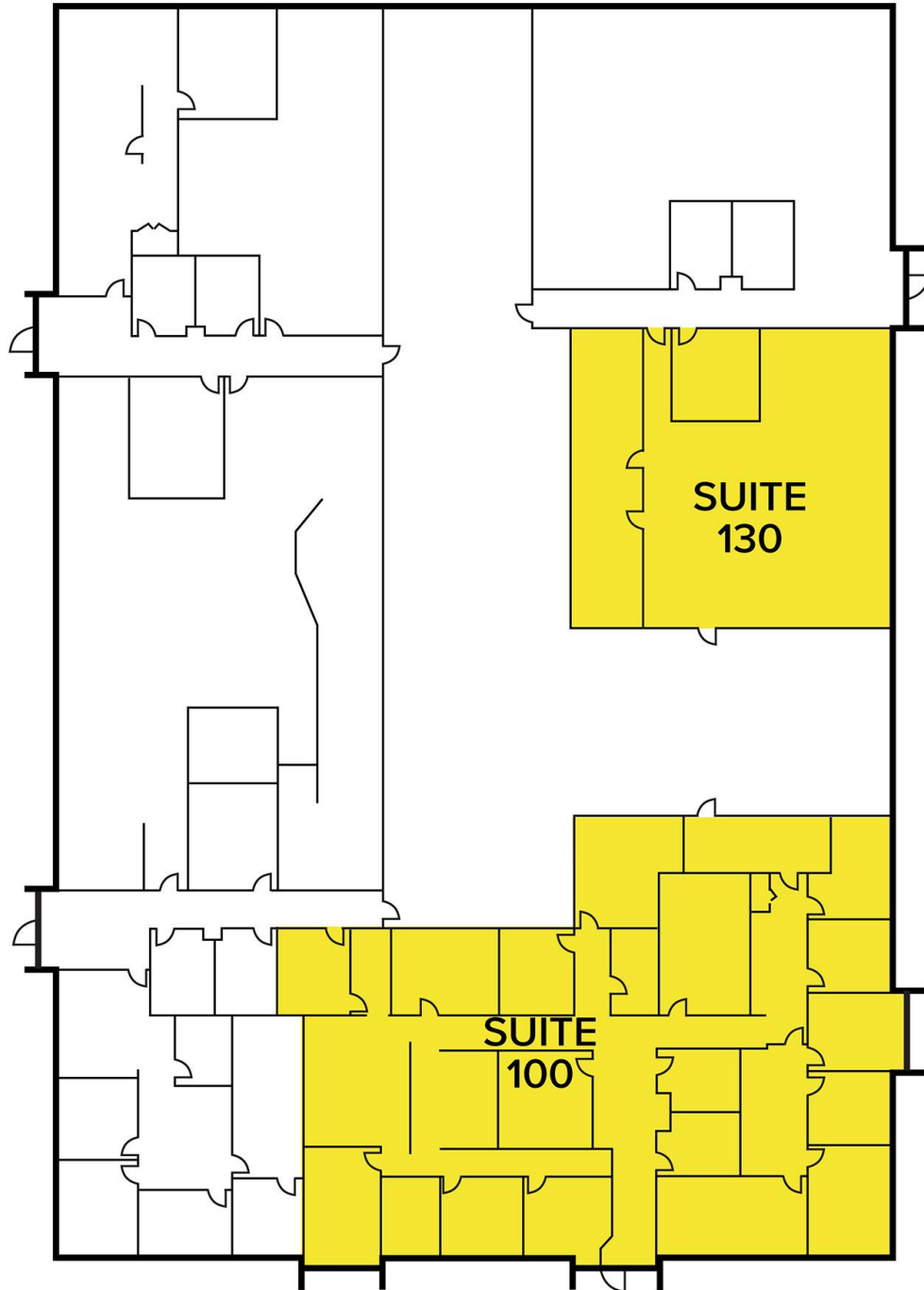
For more information, please contact:

JEFFREY TREPECK
(248) 359 0626
jtrepeck@signatureassociates.com

JIM MONTGOMERY
(248) 359 0614
jmontgomery@signatureassociates.com

SIGNATURE ASSOCIATES
One Towne Square, Suite 1200
Southfield, MI 48076
www.signatureassociates.com

Floor Plan – Suite 100 & 130



For more information, please contact:

JEFFREY TREPECK
(248) 359 0626
jtrepeck@signatureassociates.com

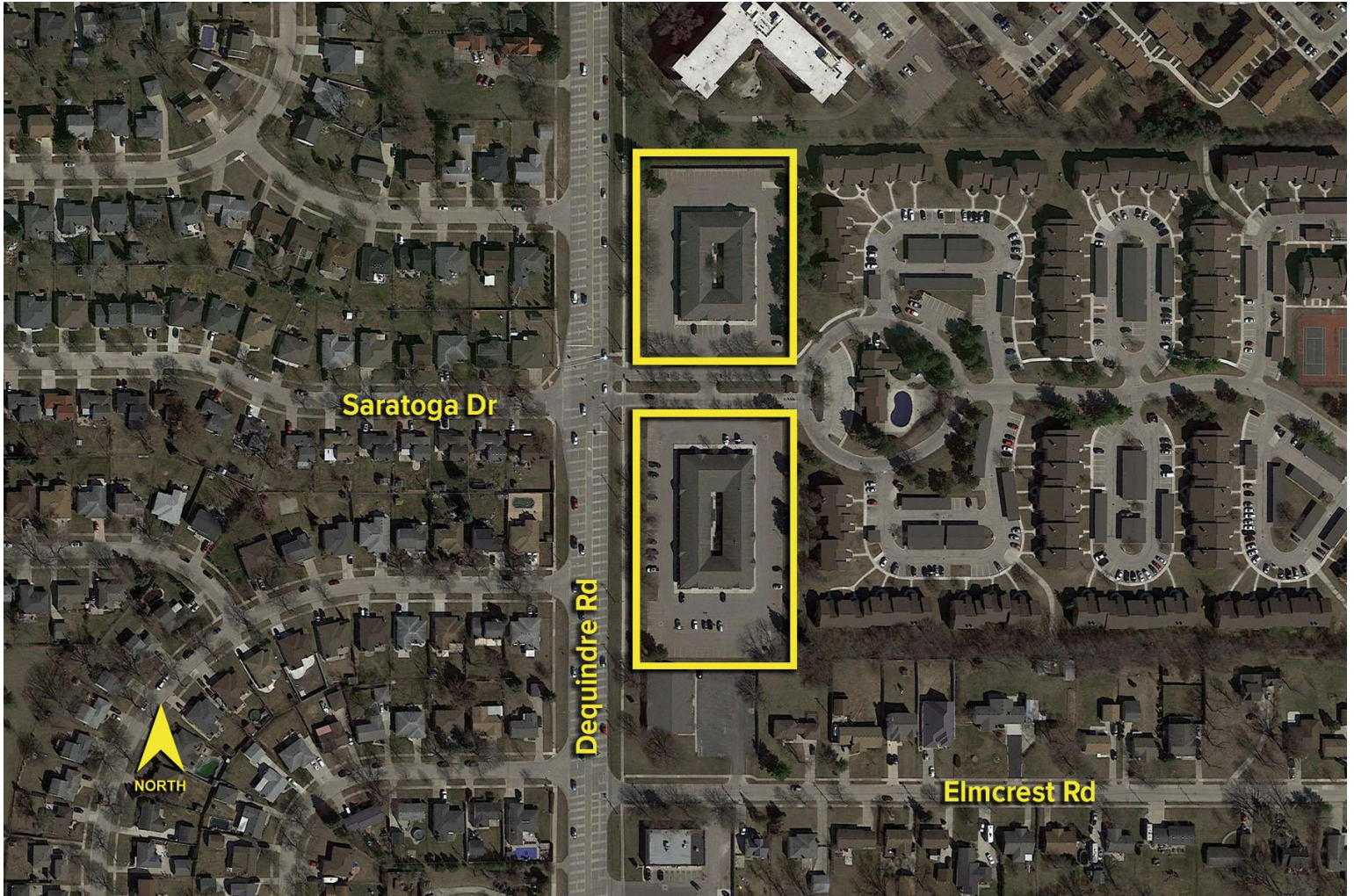
JIM MONTGOMERY
(248) 359 0614
jmontgomery@signatureassociates.com

SIGNATURE ASSOCIATES
One Towne Square, Suite 1200
Southfield, MI 48076
www.signatureassociates.com

36150-36250 Dequindre Rd. – Sterling Heights, MI
Office For Lease

1,190 - 4,941
Square Feet
AVAILABLE

Aerial



For more information, please contact:

JEFFREY TREPECK
(248) 359 0626
jtrepeck@signatureassociates.com

JIM MONTGOMERY
(248) 359 0614
jmontgomery@signatureassociates.com

SIGNATURE ASSOCIATES
One Towne Square, Suite 1200
Southfield, MI 48076
www.signatureassociates.com