



20/2-14 Station Place Werribee VIC

Ideally positioned within walking distance to Werribee Train Station and the vibrant Watton Street precinct, this first-floor office presents an excellent opportunity to secure a well-located commercial space within a quality complex.

Currently configured with a welcoming foyer/reception area and multiple offices, the flexible floorplan of over 200m² can easily be reconfigured to suit a variety of business needs. Complete with kitchenette facilities and air conditioning, the property is ready for immediate occupation.

Fresh paint and new floors, don't miss the opportunity to establish your business in this highly sought-after and convenient location.

Price : CONTACT AGENT
Building Size : 200 sqm
View : <https://www.ypa.com.au/8638592>

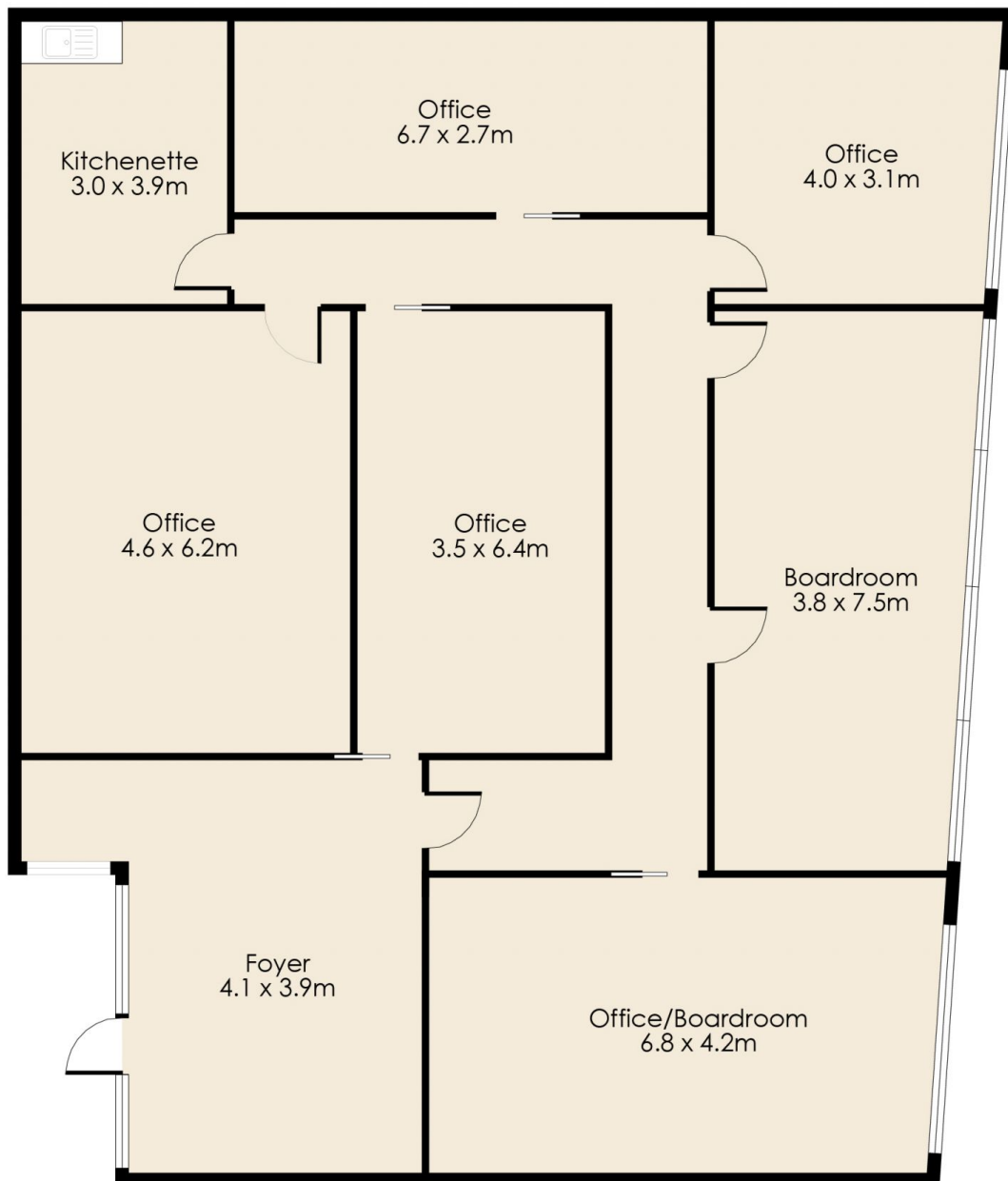


James Antonio
0401 889 248



Amy McMaster
0424 272 619

20/2-14 Station Place, WERRIBEE



Whilst every attempt has been made to ensure the accuracy of the floor plan contained here, measurements of doors, windows, rooms and any other item are approximate and no responsibility is taken for any error, omission, or misstatement. This plan is for illustrative purposes only and should be used as such by any prospective purchaser. The services, systems and appliances shown have not been tested and no guarantee as to their operability or efficiency can be given.