



**121 E UNION ST**  
PASADENA, CA 91103

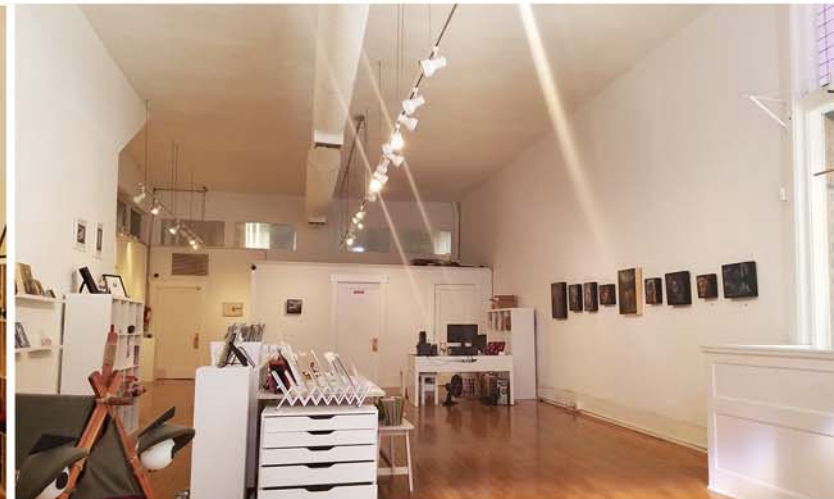
**SIZE:**  
**1,750 SQFT**

**PROPERTY HIGHLIGHTS**

- Corner retail space with showroom windows. Located on the corner of Union St & Arroyo Pkwy.
- Currently occupied by a fine arts gallery. Great open plan with private office & storage room.
- Decorated with track light fixtures, hardwood floors, high ceilings and transom windows.
- Walking distance from 100+ options for upscale dining and shopping in Old Pasadena
- Easy access to 210/134 freeways. Steps away from Metro Goldline - Memorial Park Station

**PRICE:**  
**\$3.50 / FT NNN**

**AVAILABLE:**  
**OCT. 1ST**



**Hoss MacVaugh**

**Office:** 626.583.8400 • **Cell:** 626.255.2308 • **Email:** [hoss@macvaugh.com](mailto:hoss@macvaugh.com)

MacVaugh & Co. • 300 S. Raymond Avenue • Suite 14 • Pasadena, CA 91105 • [www.macvaugh.com](http://www.macvaugh.com)

The information contained herein has been obtained from sources deemed to be reliable. While we have no reason to doubt its accuracy, we do not guarantee to and assume no liability for any inaccuracies and/or omissions. This is not an offering. Terms and conditions are subject to change. BRE License #00971669