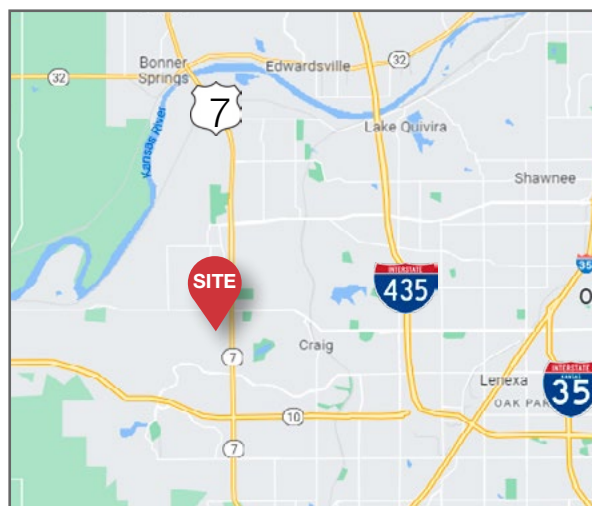




23712-23716 W. 83rd Terrace
Shawnee, Kansas

Property Features

- **Unit 23712:** ± 1,875 SF
- Drive-in loading (12' x 12')
- Excellent access to K-7 Highway
- Visibility from 83rd Street



For more information:

Logan Rose
+1 913 890 2013
lrose@nai-heartland.com

NO WARRANTY OR REPRESENTATION, EXPRESS OR IMPLIED, IS MADE AS TO THE ACCURACY OF THE INFORMATION CONTAINED HEREIN, AND THE SAME IS SUBMITTED SUBJECT TO ERRORS, OMISSIONS, CHANGE OF PRICE, RENTAL OR OTHER CONDITIONS, PRIOR SALE, LEASE OR FINANCING, OR WITHDRAWAL WITHOUT NOTICE, AND OF ANY SPECIAL LISTING CONDITIONS IMPOSED BY OUR PRINCIPALS NO WARRANTIES OR REPRESENTATIONS ARE MADE AS TO THE CONDITION OF THE PROPERTY OR ANY HAZARDS CONTAINED THEREIN ARE ANY TO BE IMPLIED.

4400 College Boulevard Suite 170
Overland Park, Kansas 66211
+1 913 362 1000
nai-heartland.com

For Lease

Office/Warehouse Space



For more information:

Logan Rose

+1 913 890 2013

lrose@nai-heartland.com

4400 College Boulevard Suite 170

Overland Park, Kansas 66211

+1 913 362 1000

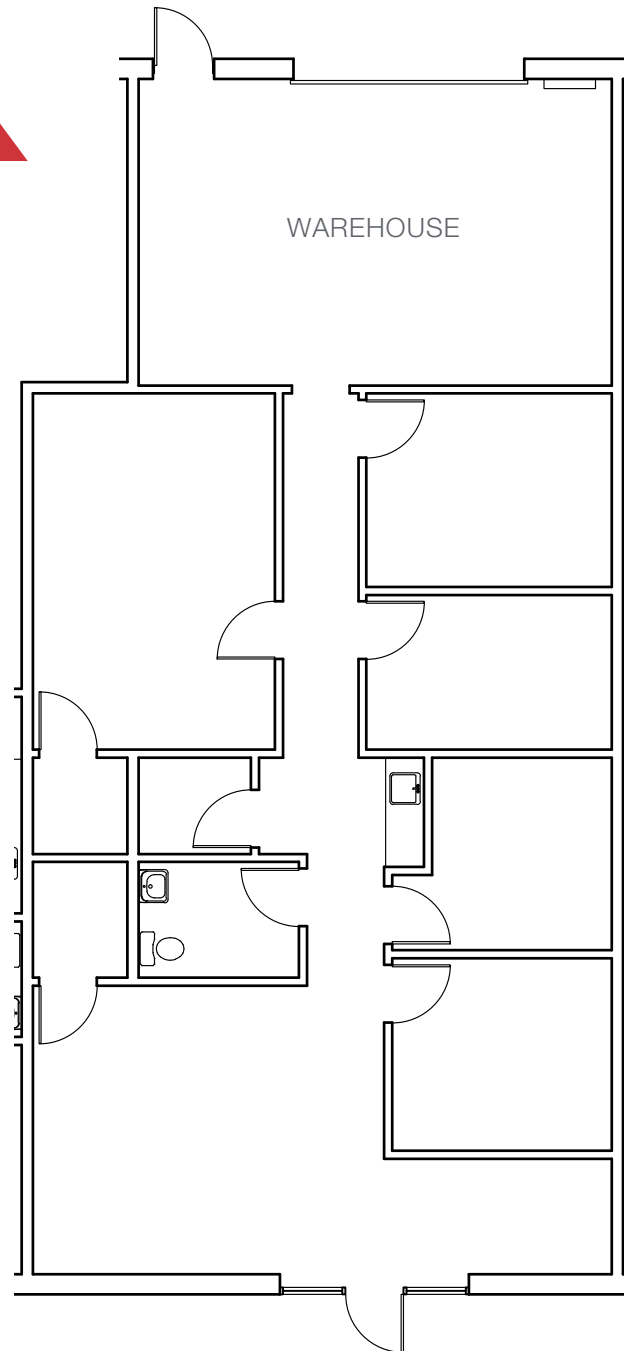
nai-heartland.com

For Lease

Office/Warehouse Space

Unit 23712: ± 1,875 SF

- Owner willing to remove office space to increase warehouse area.
- \$1,953.12 gross per month plus CAM



For more information:

Logan Rose
+1 913 890 2013
lrose@nai-heartland.com

NAIHeartland

4400 College Boulevard Suite 170
Overland Park, Kansas 66211
+1 913 362 1000
nai-heartland.com