



640 East Diamond Avenue Gaithersburg, MD

FOR SALE OR LEASE

Availability

Suite F
6,885 SF, Office

Features

- Zoned: CBD
- Free Parking
- On-Site Ride-On Bus Stop
- I-270 - 1.8 MI
- ICC - 2.5 MI
- MD 355 - 1 MI
- Olde Towne Gaithersburg - 0.5 MI

Aerial Map



Inquire with the Director of Economic Development, Tom Lonergan - (ttonergan@gaithersburgmd.gov) regarding newly created incentive programs for buildings Located in the City of Gaithersburg

For More Information

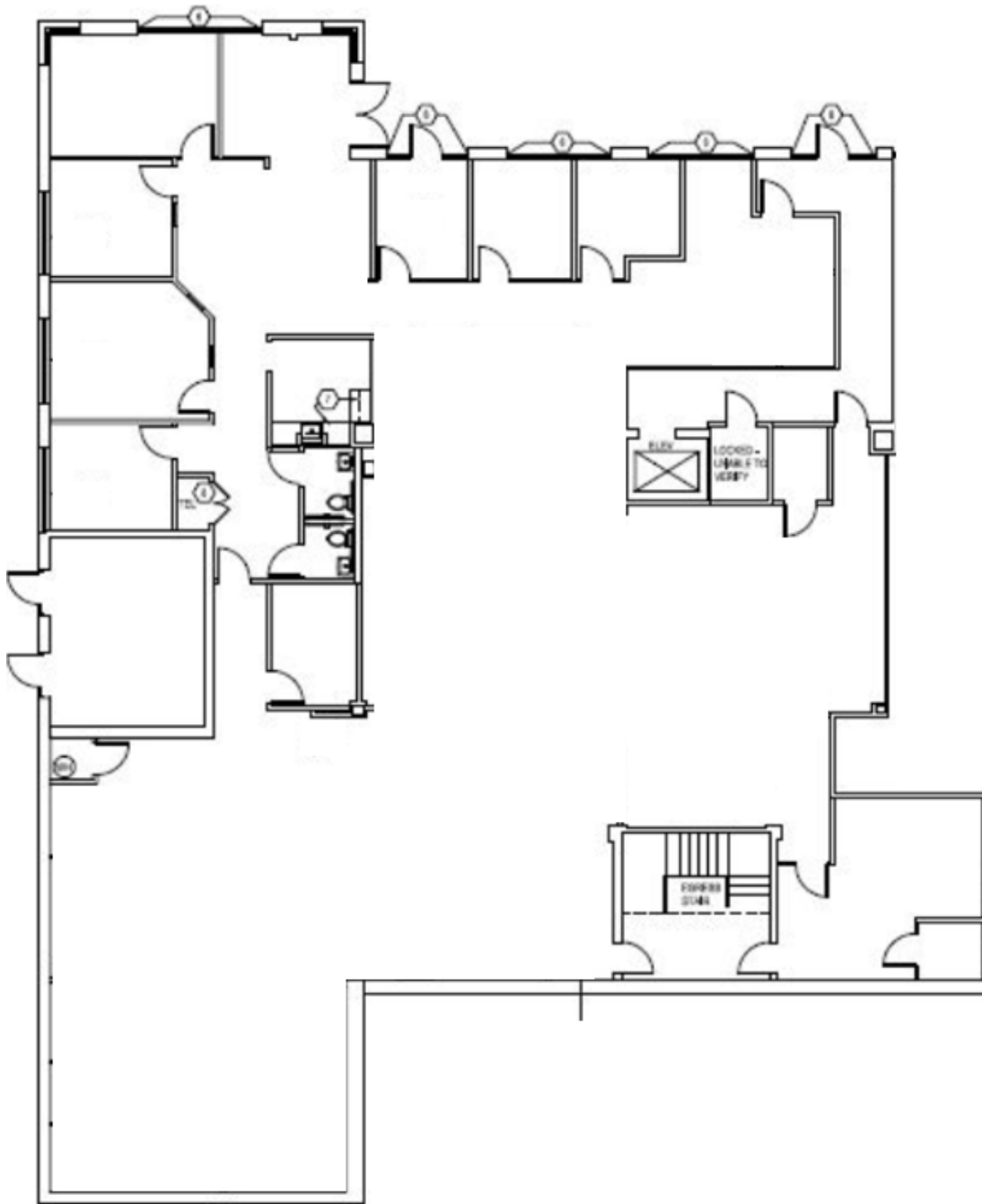
Kenneth E. Fellows
301.222.0210
kfellows@edgecre.com

Robert E. Pugh
301.222.0211
rpugh@edgecre.com

2273 Research Blvd | Suite 150
Rockville, Maryland 20850
301.222.0200



Suite F 6,885 SF (First Floor)



For More Information

Kenneth E. Fellows
301.222.0210
kfellows@edgecre.com

Robert E. Pugh
301.222.0211
rpugh@edgecre.com

2273 Research Blvd | Suite 150
Rockville, Maryland 20850
301.222.0200

