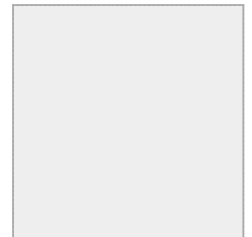
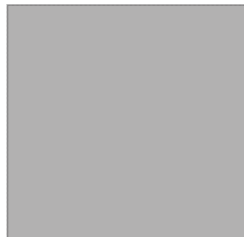
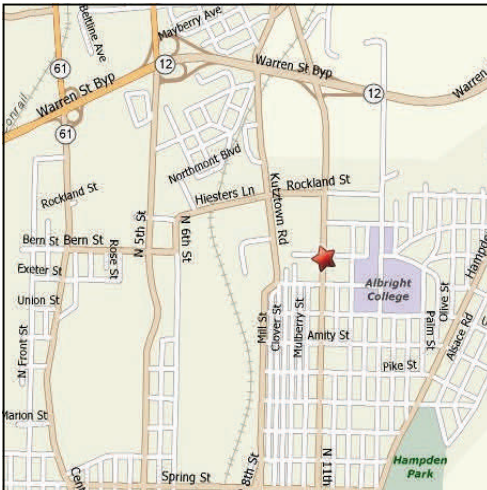


# Richmond Corporate Center 1800 N. 12th Street, Building # 1 Reading, PA



## Lease Available

- 3,800 +/- SF office
- Building located on shared 5.3 acre lot
- Located at 12th & Bern Streets in Northeast Reading
- Brick construction
- Offices in very good condition
- Short distance to Albright College campus
- 18,287 population within one mile of site
- Ample off-street parking
- Other tenants include:
  - St. Joseph Medical Center
  - TransAmerican Office Furn.
  - Stichler Products
  - Lehigh Medical



**NEARBY ALBRIGHT COLLEGE HAS AN ENROLLMENT OF 1,650 STUDENTS PLUS 103 FULL TIME FACULTY MEMBERS. 18, 250 + POPULATION WITHIN ONE MILE OF PROPERTY.**

**NAI** Keystone Commercial  
& Industrial, LLC

Commercial Real Estate Services, Worldwide.

The information contained herein has been given to us by the owner of the property or other sources we deem reliable, we have no reason to doubt its accuracy, but we do not guarantee it. All information should be verified prior to purchase or lease.

### Contact information

John Buccinno

NAI Keystone Commercial & Industrial, LLC

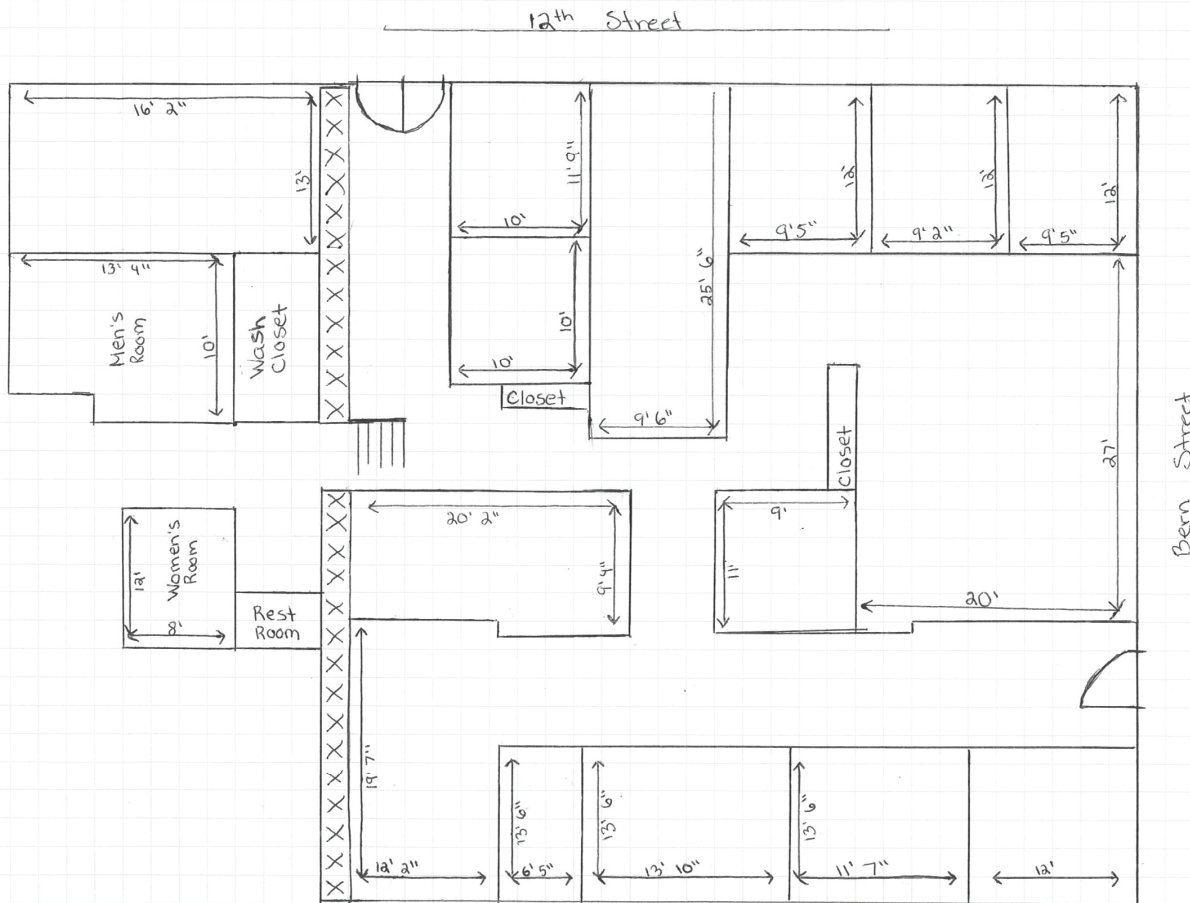
direct 610 370-8508

office 610 779 1400

Email [jbuccinno@naikeystone.com](mailto:jbuccinno@naikeystone.com)

# Richmond Corporate Center 1800 N. 12th Street, Building # 1 Reading, PA

# Floor Plan



Landlord onsite. All CAM and Taxes included in Rent



Commercial Real Estate Services, Worldwide.

The information contained herein has been given to us by the owner of the property or other sources we deem reliable, we have no reason to doubt its accuracy, but we do not guarantee it. All information should be verified prior to purchase or lease.

### Contact information

John Buccinno

NAI Keystone Commercial & Industrial, LLC

direct 610 370-8508

Office 610 779-1400

Email [jbuccinno@naikeystone.com](mailto:jbuccinno@naikeystone.com)

[www.naikeystone.com](http://www.naikeystone.com)